

KPSEA 2024 KEY AREAS

INTEGRATED SCIENCE

{200 INTEGRATED SCIENCE PREDICTION QUESTIONS}

{COMMONLY KPSEA TESTED QUESTIONS}

*A Series of KPSEA 2024 Prediction Questions
Prepared by a Pannel of Top KNEC Examiners HQ
Nairobi*

**All KPSEA 2024 Candidates are advised to take the
questions Serious!**

Confidential!!!

For Marking Schemes

Contact 0724333200/0795491185/0768321553

Or Order online at

www.kenyaeducators.co.ke

KENYA EDUCATORS CONSULTANCY

A. SCIENCE & TECHNOLOGY

1. The part of the human body that provides support to the body and helps the body to remain upright is the:-

- A. Limb bone
- B. Rib cage
- C. skull
- D. Backbone

2. Terry saw an animal with the following characteristics:

- A. *It is a vertebrate*
- B. *It has moist skin*
- C. *It lays unfertilised eggs*
- D. *It lives partly in water and partly on land.*

The above animal is likely to be:-

- A. shark
- B. chameleon
- C. whale
- D. frog

3. Which one is an egg laying mammal?

- A. Ostrich
- B. Whale
- C. Bat
- D. Spiny Ant Eater

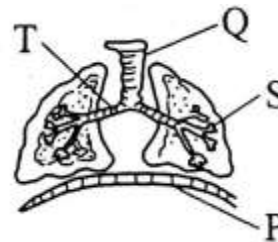
4. The tube that connects the mouth to the anus is known as:

- A. Alimentary canal
- B. Trachea
- C. Gullet
- D. Small intestine

5. The following are water-borne diseases except:-

- A. Malaria
- B. Cholera
- C. Bilharzia
- D. Typhoid

Use the diagram below to answer questions 11 - 13.



11. Which part helps in the exchange of gases?

- A. P
- B. S
- C. T
- D. R

12. The C-shaped rings found in the part marked Q are called:-

- A. Ridges
- B. Villi
- C. Cartilages
- D. Trachea

13. During breathing in, the part marked P moves:-

- A. downwards
- B. sideways
- C. remains the same
- D. downward

14. Which one is not a sign of tuberculosis

- A. Pain in the chest
- B. Dry coughs
- C. Loss of weight
- D. Swollen stomach

15. Which digital part of the computer is shown below?



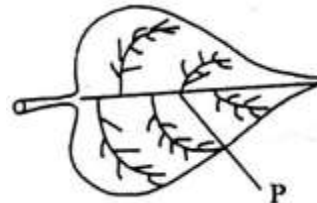
- A. C.P.U
 - B. Monitor
 - C. Keyboard
 - D. Mouse
16. Which waste does not rot?
- A. chicken droppings
 - B. dry leaves
 - C. kitchen wastes
 - D. broken pots
17. Malaria is caused by:-
- A. mosquitoes
 - B. parasites
 - C. lice
 - D. bedbugs
18. Which tooth is drawn below?



- A. Molar
 - B. Incisor
 - C. Canine
 - D. Premolar
19. A snake moves by:-
- A. gliding
 - B. slithering
 - C. crawling
 - D. swimming
20. Which pair consists of warm-blooded animals?
- A. Hen and rat
 - B. Fish and frog
 - C. Cow and chamelion
 - D. Eagle and tilapia

21. Grade six learners grouped different plants depending on their common characteristics. This grouping is known as:-

- A. category
 - B. classification
 - C. identification
 - D. studying
22. Which one of the following non-green plants is used in bakery?
- A. Yeast
 - B. Mould
 - C. Mushroom
 - D. Puff ball
23. Which one of the following is NOT a vertebrate?
- A. Insect
 - B. Fish
 - C. Birds
 - D. Reptiles
24. Which one is also called voluntary muscle?
- A. Triceps
 - B. Biseps
 - C. Cardiac
 - D. Skeleton muscles
25. The part of the leaf marked **P** is known as:-



- A. vein
- B. leaf stalk
- C. lamina
- D. midrib

B. AGRINUTRITION

21. A child who has knocking knees or bow-legged is likely to suffer from:-
A. kwashiorkor
B. Anaemia
C. Rickets
D. Marasmus
22. A person between 13 and 19 years is
A. a young man.
B. an underage.
C. a small lady.
D. an adolescent.
23. Which of the following communicabl diseases affects dirty hair?
A. Ringworms
B. Measles
C. Malaria
D. Chicken pox.
24. Which one of the following is NOT a quality of a good playing item?
A. Easily available
B. Durable
C. Expensive
D. Safe
25. Which one of the following is NOT a surface found in our homes?
A. Glass
B. Cemented
C. Wooden
D. Iron
26. Which one of the following is NOT in the pre-teen stage?
A. Lucy 11 years
B. Lilian - 12 years
C. Lawrence - 9 years
D. Lenox 19 years
27. Which type of shoes is recommended for learners from Monday to Friday in school?
A. Canvas shoes
B. Gumboots
C. Rubber shoes.
D. Leather shoes
28. Which of the following is a deterrent of wild animals against farming activities?
A. Scarecrow.
B. Chicken.
C. Mongoose.
D. Bananas.
29. Which one is not a preventive measure against Corona-Virus Disease?
A. wearing face mask
B. use of sanitizers
C. social distance
D. sitting close to friends.
30. Which of the following lists consists of accessories only?
A. Lipstick, eye pencil, deodorants.
B. Deodorants, creams, nailpolish.
C. Perfumes, headgears, lotion.
D. Scarves, necklaces, wristbands.
31. Which wild animal mostly destroys fresh maize in the farm?
A. Monkeys
B. Moles
C. Mongoose
D. Squirrels
32. Which activity will increase soil erosion
A. Animals
B. Planting trees
C. Running water
D. Many stones
33. Which one is a use of water in the farm?

- A. washing body after work.
B. mixing chemicals.
C. making fountains.
D. skiing
34. The following are vegetable crops except?
A. Barley
B. Tomatoes
C. Onions
D. Spinach
35. A farmer removed excess branches from his fruit trees. This practice is known as:-
A. Thinning
B. Weeding
C. Pruning
D. Gapping
36. Which of the following shows a pair of tiny seeded crops?
A. Sugarcane and banana.
B. Onions and tomatoes.
C. Pumpkin and cucumber.
D. Sunflower and carrots.
37. Which one is a way of conserving water in the soil?
A. weeding
B. pruning
C. mulching
D. raising the nursery be
38. Which one is NOT a climbing plant?
A. Goose berry
B. Kiwi plant
C. Passion fruit
D. Water melon
39. All the following are ways of controlling soil erosion. Which one is not?
A. Using drip irrigation.
B. Mulching.
C. Planting cover crops
D. Building gabions.
40. Identify the animal drawn below.
A. Goat.
B. Dog
C. Sheep.
D. Bull.
39. Below are steps in the scissor technique in high jump. Arrange them in the correct order:
i. Approach
ii. The flight
iii. The take off
iv. Landing
A. (ii), (i), (iii), (iv)
B. (i), (iii), (ii), (iv)
C. (iv), (iii), (i), (ii)
D. (iii), (ii), (iv), (i)
41. How many players are there in a team of Kabaddi game?
A. Eleven
B. Nine
C. Seven
D. Five
42. Awinja and Kerubo likes playing the game of skipping a rope everyday. They are preventing:-
A. Obesity
B. Corona Virus Disease
C. Kwashiorkor
D. Malaria
43. Which term is not used in the game of rounders?
A. Fielding
B. Catching

- C. Throwing
D. Take off board
44. Which of the following can be used to improvise a relay baton?
A. Broken glasses.
B. Maize stalks.
C. Old clothes.
D. Thread.
45. Partner work can be applied in
A. swimming.
B. football.
C. athletics.
D. ropework.
46. Which one is not a sign and symptom of strain?
A. Pain
B. Swelling
C. Muscles cramping
D. Bruises
47. The following items are found in the First-Aid-Kit box. Which one is NOT?
A. Pressure pad
B. Sterile gauze
C. Iodine
D. Razor blade
48. What does letter C stand for in ABC in First Aid?
A. Common
B. Circulation
C. Circulatory
D. Correction
49. The state of the body having enough water is known as:-
A. Watery
B. Clean
C. Dehydration
D. Hydration
50. The state of the body having enough water is known as:-

- A. Watery
B. Clean
C. Dehydration
D. Hydration

E. SCIENCE & TECHNOLOGY

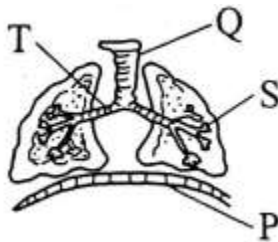
51. The part of the human body that provides support to the body and helps the body to remain upright is the:-
A. Limb bone
B. Rib cage
C. skull
D. Backbone
52. Terry saw an animal with the following characteristics:
A. *It is a vertebrate*
B. *It has moist skin*
C. *It lays unfertilised eggs*
D. *It lives partly in water and partly on land.*
The above animal is likely to be:-
A. shark
B. chameleon
C. whale
D. frog
53. Which one is an egg laying mammal?
A. Ostrich
B. Whale
C. Bat
D. Spiny Ant Eater
54. The tube that connects the mouth to the anus is known as:
A. Alimentary canal
B. Trachea

- C. Gullet
- D. Small intestine

55. The following are water-borne diseases except:-

- A. Malaria
- B. Cholera
- C. Bilharzia
- D. Typhoid

Use the diagram below to answer questions 56 - 57.



56. Which part helps in the exchange of gases?
- A. P
 - B. S
 - C. T
 - D. R
57. The C-shaped rings found in the part marked Q are called:-
- A. Ridges
 - B. Villi
 - C. Cartilages
 - D. Trachea
58. During breathing in, the part marked P moves:-
- A. downwards
 - B. sideways
 - C. remains the same
 - D. downward
59. Which one is not a sign of tuberculosis
- A. Pain in the chest

- B. Dry coughs
- C. Loss of weight
- D. Swollen stomach

60. Which digital part of the computer is shown below?

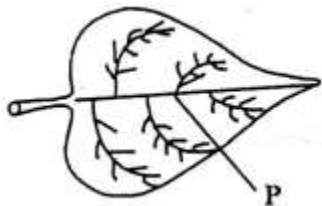


- A. C.P.U
 - B. Monitor
 - C. Keyboard
 - D. Mouse
61. Which waste does not rot?
- A. chicken droppings
 - B. dry leaves
 - C. kitchen wastes
 - D. broken pots
62. Malaria is caused by:-
- A. mosquitoes
 - B. parasites
 - C. lice
 - D. bedbugs
63. Which tooth is drawn below?



- A. Molar
 - B. Incisor
 - C. Canine
 - D. Premolar
64. A snake moves by:-
- A. gliding
 - B. slithering
 - C. crawling
 - D. swimming
65. Which pair consists of warm-blooded animals?
- A. Hen and rat

- B. Fish and frog
C. Cow and chamelion
D. Eagle and tilapia
66. Grade six learners grouped different plants depending on their common characteristics. This grouping is known as:-
A. category
B. classification
C. identification
D. studying
67. Which one of the following non-green plants is used in bakery?
A. Yeast
B. Mould
C. Mushroom
D. Puff ball
68. Which one of the following is NOT a vertebrate?
A. Insect
B. Fish
C. Birds
D. Reptiles
69. Which one is also called voluntary muscle?
A. Triceps
B. Biseps
C. Cardiac
D. Skeleton muscles
70. The part of the leaf marked **P** is known as:-



- A. vein
B. leaf stalk
C. lamina
D. midrib
- F.**
AGRINUTRITION
71. A child who has knocking knees or bow-legged is likely to suffer from:-
A. kwashiorkor
B. Anaemia
C. Rickets
D. Marasmus
72. A person between 13 and 19 years is
A. a young man.
B. an underage.
C. a small lady.
D. an adolescent.
73. Which of the following communicabl diseases affects dirty hair?
A. Ringworms
B. Measles
C. Malaria
D. Chicken pox.
74. Which one of the following is NOT a quality of a good playing item?
A. Easily available
B. Durable
C. Expensive
D. Safe
75. Which one of the following is NOT a surface found in our homes?
A. Glass
B. Cemented
C. Wooden
D. Iron
76. Which one of the following is NOT in the pre-teen stage?
A. Lucy 11 years
B. Lilian - 12 years
C. Lawrence - 9 years
D. Lenox 19 years

77. Which type of shoes is recommended for learners from Monday to Friday in school?
- A. Canvas shoes
 - B. Gumboots
 - C. Rubber shoes.
 - D. Leather shoes
78. Which of the following is a deterrent of wild animals against farming activities?
- A. Scarecrow.
 - B. Chicken.
 - C. Mongoose.
 - D. Bananas.
79. Which one is not a preventive measure against Corona-Virus Disease?
- A. wearing face mask
 - B. use of sanitizers
 - C. social distance
 - D. sitting close to friends.
80. Which of the following lists consists of accessories only?
- A. Lipstick, eye pencil, deodorants.
 - B. Deodorants, creams, nailpolish.
 - C. Perfumes, headgears, lotion.
 - D. Scarves, necklaces, wristbands.
81. Which wild animal mostly destroys fresh maize in the farm?
- A. Monkeys
 - B. Moles
 - C. Mongoose
 - D. Squirrels
82. Which activity will increase soil erosion
- A. Animals
 - B. Planting trees
 - C. Running water
 - D. Many stones
83. Which one is a use of water in the farm?
- A. washing body after work.
 - B. mixing chemicals.
 - C. making fountains.
 - D. skiing
84. The following are vegetable crops except?
- A. Barley
 - B. Tomatoes
 - C. Onions
 - D. Spinach
85. A farmer removed excess branches from his fruit trees. This practice is known as:-
- A. Thinning
 - B. Weeding
 - C. Prunning
 - D. Gapping
86. Which of the following shows a pair of tiny seeded crops?
- A. Sugarcane and banana.
 - B. Onions and tomatoes.
 - C. Pumpkin and cucumber.
 - D. Sunflower and carrots.
87. Which one is a way of conserving water in the soil?
- A. weeding
 - B. prunning
 - C. mulching
 - D. raising the nursery be
88. Which one is NOT a climbing plant?
- A. Goose berry
 - B. Kiwi plant
 - C. Passion fruit
 - D. Water melon
89. All the following are ways of controlling soil erosion. Which one is not?
- A. Using drip irrigation.

- B. Mulching.
C. Planting cover crops
D. Building gabions.
90. Identify the animal drawn below.
A. Goat.
B. Dog
C. Sheep.
D. Bull.
91. Below are steps in the scissor technique in high jump. Arrange them in the correct order:
i. Approach
ii. The flight
iii. The take off
iv. Landing
A. (ii), (i), (iii), (iv)
B. (i), (iii), (ii), (iv)
C. (iv), (iii), (i), (ii)
D. (iii), (ii), (iv), (i)
92. How many players are there in a team of Kabaddi game?
A. Eleven
B. Nine
C. Seven
D. Five
93. Awinja and Kerubo likes playing the game of skipping a rope everyday. They are preventing:-
A. Obesity
B. Corona Virus Disease
C. Kwashiorkor
D. Malaria
94. Which term is not used in the game of rounders?
A. Fielding
B. Catching
C. Throwing
D. Take off board
95. Which of the following can be used to improvise a relay baton?
A. Broken glasses.
B. Maize stalks.
C. Old clothes.
D. Thread.
96. Partner work can be applied in
A. swimming.
B. football.
C. athletics.
D. ropework.
97. Which one is not a sign and symptom of strain?
A. Pain
B. Swelling
C. Muscles cramping
D. Bruises
98. The following items are found in the First-Aid-Kit box. Which one is NOT?
A. Pressure pad
B. Sterile gauze
C. Iodine
D. Razor blade
99. What does letter C stand for in ABC in First Aid?
A. Common
B. Circulation
C. Circulatory
D. Correction
100. The state of the body having enough water is known as:-
A. Watery
B. Clean
C. Dehydration
D. Hydration

I. SCIENCE
AND TECHNOLOGY.

101. Which of the following parts of a computer is correctly matched with its function?

- A. Monitor-processing data.
- B. Keyboard-producing hard copies.
- C. Screen-typing.
- D. Mouse - selecting parts of text.

102. In which of the following levers is the load between the effort and the fulcrum?

- A. Claw hammer
- B. Lid opener
- C. Pliers
- D. Wheelbarrow

103. One day, a typist was typing an e-mail on a computer. On which part of the computer was his work processed?

- A. CPU
- B. VDU
- C. Printer
- D. Keyboard

104. All the following are not internal parasites except a

- A. flea
- B. tapeworm
- C. louse
- D. jigger

105. The following are signs and symptoms of water borne diseases.

- i. Blood in the stool and urine.
- ii. Slight diarrhoea and vomiting.

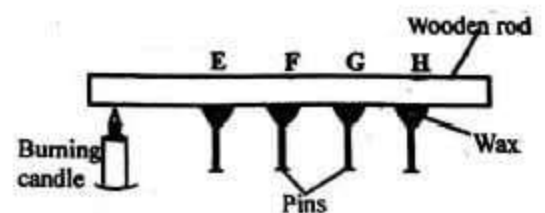
- iii. Loss of appetite.
 - iv. Itching of the bowel.
 - v. Aches in muscles and joints.
- Which pair shows signs and symptoms of bilharzia?

- A. ii, iii
- B. ii, v
- C. iii, v
- D. i, iv

106. All the following materials decompose easily except

- A. a sisal rope.
- B. a metallic tin.
- C. maize stalks.
- D. avocado leaves.

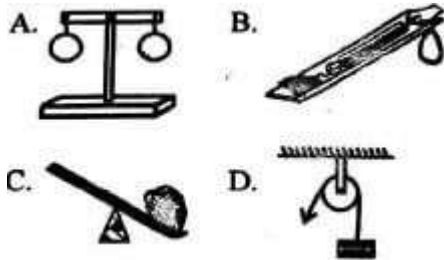
107. Grade 4 pupils of Imarika primary school set up an experiment like the one shown below.



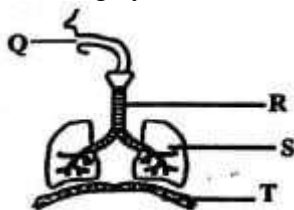
Which of the following statements is true about the set up?

- A. The learners concluded that solids conduct heat.
- B. Pin E was the first to drop.
- C. The learners did not reach the right conclusion.
- D. Pin H was the last to fall.

108. Which of the following shows a crowbar?



109. The diagram below shows the breathing system.



Which of the following statements is correct?

- A. The part labelled S warms the air breathed in.
- B. Part Q moistens the air inhaled.
- C. Gaseous exchange takes place in part T.
- D. Part R does not have mucus.

110. Which of the following is an example of useful fungi?

- A. Toadstool
- B. Athlete's foot
- C. Puffball
- D. Penicillium

111. Which of the following is a characteristic of cumulus clouds? They

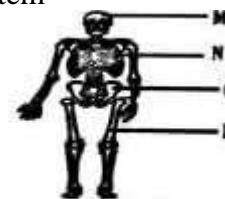
- A. indicate fine weather.
- B. keep changing their shape.

- C. are rain laden clouds.
- D. appear low in the sky.

112. All the following are examples of solids except?

- A. Chalk dust
- B. Glue
- C. Charcoal powder
- D. Sand

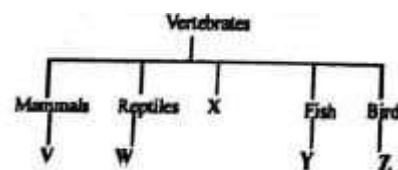
113. Below is a human skeletal system



Which of the labelled parts shows the skull?

- A. P
- B. N
- C. M
- D. O

The chart below shows a part of the classification of animals.



114. Which of the following can be used to represent X?

- A. Frog
- B. Amphibians
- C. Invertebrates
- D. Insects

115. Which one of the following is not a characteristic of group W?

They

- A. have dry scales.
- B. lay fertilized eggs.
- C. breathe by lungs.
- D. have mammary glands

the best for construction respectively?

- A. Sandy and clay.
- B. Loam and sandy.
- C. Clay and loam.
- D. Clay and sandy.

120. From which of the following domestic animals do we get the least food products?

- A. Chicken
- B. Pig
- C. Goat
- D. Camel

121. Tiny seeded crops can be directly sown in the ground by

- A. thinning or weeding.
- B. broadcasting or sowing in rows.
- C. gapping or watering.
- D. irrigation or weeding.

122. Changes in adolescence that can be seen are called:-

- A. emotional changes
- B. physical changes
- C. social changes
- D. mental changes

123. Which letter represents maize stalks?

- A. U
- B. S
- C. T
- D. R

124. Fruit trees in a nursery bed can be cared for by

- A. thinning.
- B. transplanting.
- C. pruning.
- D. uprooting.

J. **AGRICULTURE & NUTRITION.**

116. Innovative gardening can be placed in all these areas **except-**

- A. Pavements
- B. Walls
- C. Trees
- D. Tables

117. All the following are not vegetables except

- A. oats.
- B. wheat.
- C. carrots.
- D. sorghum.

118. We scare animals from the farm using:-

- A. traps
- B. noise
- C. fire
- D. guns

119. Which of the following types of soil makes the longest ribbons and

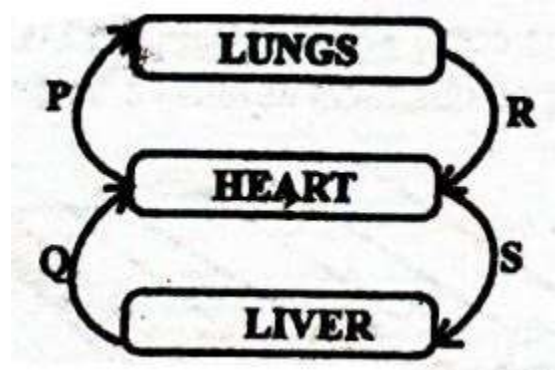
125. The best way of putting plant remains into use is by
A. burning them.
B. recycling them.
C. using them to make compost manure.
D. feeding them to livestock.
126. We get pork from a domestic animal called:-
A. fish
B. pig
C. camel
D. goat
127. All the following are signs and symptoms associated with marasmus. Which one is not
A. Wrinkled face
B. Often cries
C. Pot belly
D. Sharp appetite
128. When ripe, the colour of passion fruits is:-
A. green
B. purple
C. orange
D. red
129. Some Grade 5 learners were told to list some examples of legumes:
Singh: Greengrams
Yohana: Beans
Yusra: Barley
- Khadija: Groundnuts
Who among them was not correct
A. Singh
B. Yohana
C. Yusra
D. Khadija
130. Which of the following gardening practices conserves soil moisture?
A. Weeding
B. Pruning
C. Digging
D. Mulching
131. A teacher came to class with a cooking stick and asked her learners what the cooking equipment was made of. What was the correct answer?
A. Plastic
B. Clay
C. Wood
D. Metal
132. Which of the following foods is correctly matched with the nutrients it produces?
A. Carrots carbohydrates
B. Maize proteins
C. Pineapples iron
D. Spinach vitamins
133. All the following foods cannot be cooked using dry fat method except
A. bacon
B. mandazi
C. yams
D. eggs
134. Which of the following pairs of foods is ideal for a patient suffering from kwashiorkor?
A. Fruits and vegetables.

- B. Fish and eggs.
C. Carrots and yams.
D. Meat and ugali.
135. Which of the following changes takes place in both pre-adolescent boys and girls?
A. Increase in body size.
B. Broadening of hips.
C. Onset of wet dreams.
D. Menstruation.
136. Regular exercises can help us prevent
A. headache.
B. stomachache.
C. fitness.
D. obesity.
137. All the following are components of health related fitness. Which one is not?
A. Muscular strength.
B. Cardiorespiratory endurance.
C. Mental preparation.
D. Flexibility.
138. Each team in a volleyball match has players.
A. twelve
B. eleven
C. seven
D. six
139. The jump rope technique that involves jumping from side to side is called
A. heel taps.
B. skier.
C. wounded duck.
D. straddle cross.
140. The method that players plan and use to achieve a particular goal are called
A. technical approaches.
B. ways forward.
C. tactical approaches.
D. strategical plans.
141. The approximate weight of an improvised disc for discus should be between _____ and _____
A. ½ kg and 1kg
B. 2½ kg and 3kg
C. four kg
D. five kg
142. Which one of the following may not be a possible reason for nose bleeding?
A. A hard blow to the nose.
B. Nose picking.
C. Being rained on.
D. Blowing the nose hard.
143. In ABC for first aid, B stands for
A. bathing.
B. breathing.
C. basking.
D. bleeding.
144. All the following are leisure activities except
A. hunting.
B. dancing.
C. learning.
D. fishing.
145. Which one is **not** a pass used in soccer?
A. outside of the foot
B. push pass
C. wall pass
D. under arm pass
146. Some Grade 6 boys were seen practising pivoting in their school field. Which sports activity were they preparing for?

- A. Swimming.
B. Kabaddi.
C. Softball.
D. Frisbee.
147. Wall pass and punting have one factor in common in that they are both
- A. gymnastic activities
B. applied in soccer.
C. practised in a swimming pool.
D. practised by boys and men only.
148. Which of the following cannot be used to improvise a ball for volleyball?
- A. Strings.
B. Papers.
C. Wires.
D. Clothes.
149. All the following activities are practised in frisbee except
- A. shoulder roll.
B. one handed rim catch.
C. fore hand throw.
D. back hand throw
150. A kabaddi player who enters the opponents' court in order to tag the opposing player is called a
- A. defender.
B. bowler.
C. batter.
D. raider.

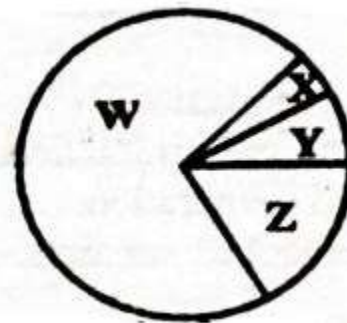
K. Science and Technology

151. Below is a simplified diagram of the circulatory system.



Which pair of blood vessels carry blood with carbondioxide?

- A. P, Q
B. P, S
C. R, S
D. P,R
152. The pie chart below shows the composition of gases that make up air.

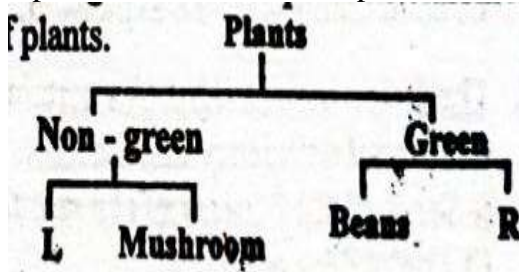


Which of the following statements is true about the composition of air represented above?

- A. The gas marked W is used during germination.
B. Gas X can be used to put out fire.
C. The gas labelled Y is used to preserve soft drinks.
D. Gas Z is used by legumes to make proteins.
153. Which of the following parts of a computer displays the document being typed?

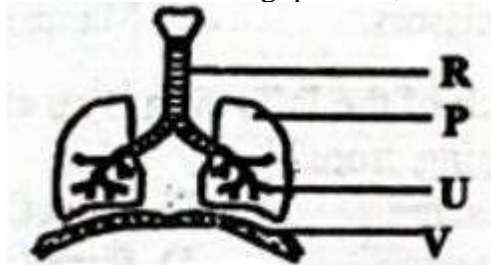
- A. Keyboard.
- B. Monitor.
- C. Printer.
- D. Mouse.

154. The diagram below represents classification of plants.



Which of the following plants can be used to represent L and R respectively?

- A. Mucor, bracket tree.
 - B. Moss, grass.
 - C. Cabbage, toadstool.
 - D. Moulds, sugarcane.
155. Which of the following statements is true?
- A. A VDU is used to process data.
 - B. A mouse has a space bar.
 - C. A cursor shows the end of text being worked on.
 - D. The monitor is used to produce hard copies.
156. Use the diagram below to answer the following question,



Which statement does not match with the parts represented by letters in the diagram above?

- A. P- its volume decreases during exhalation.
- B. U - cleans and warms the air.
- C. R - helps the trachea to stay open.
- D. V - flattens during inhalation.

157. Which of the following small animals are all invertebrates?

- A. Newt, cockroach, spider.
- B. Snail, spider, mite.
- C. Slug, crab, frog.
- D. Centipede, snake, scorpion.

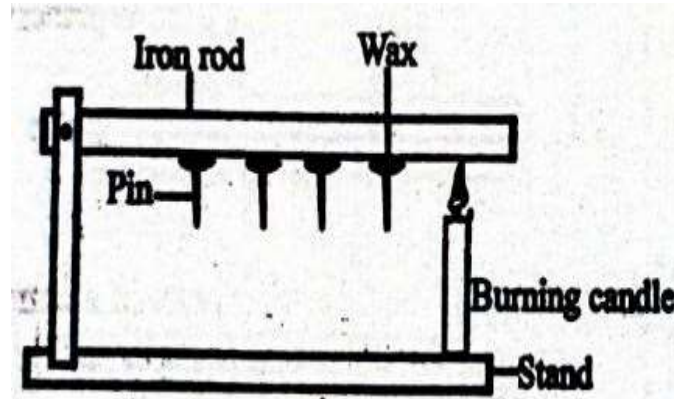
158. Which of the following effects of heat on matter are as a result of increase in temperature?

- A. Melting and expansion.
- B. Condensation and contraction.
- C. Freezing and evaporation.
- D. Evaporation and contraction.

159. Which of the following is not a function of leaves?

- A. Photosynthesis.
- B. Breathing.
- C. Transpiration.
- D. Absorption.

160. The diagram below shows transfer of heat on matter.



The type of heat transfer demonstrated above is called

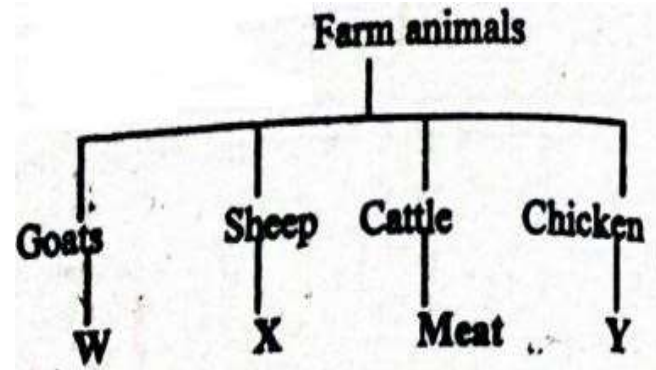
- A. convection.

- B. radiation
C. conduction.
D. expansion
161. The following are signs of a certain nutritional deficiency disease:

- v. Sores at the corners of the mouth.
vi. Protruding stomach
vii. Swollen body parts.
viii. Brown hair.

Which of the following foods can be recommended for a person suffering from the disease?

- A. Beans, tomatoes, cabbages.
B. Rice, ugali, liver.
C. Meat, fish, groundnuts.
D. Chips, sugarcane, bananas.
162. Candle wax is able to float on water because of its
- A. weight.
B. material.
C. size.
D. shape.
163. Crops such as peas, greengrams and are called
- A. cereals.
B. legumes.
C. tubers.
D. vegetables.
164. Below is a chart showing farm animals and their uses:



Which products are represented by W, X and Y respectively?

- E. Milk, mutton, eggs. :
F. Wool, mutton, eggs.
G. Mutton, meat, mohair.
H. Hide, eggs, meat.
- L. Agriculture & Nutrition**
165. Exposed plant roots on a bare flat ground is an indication of
- A. Splash erosion.
B. sheet erosion.
C. gully erosion.
D. rill erosion.
166. All the following are ways of controlling soil erosion. Which one is not?
- A. Using drip irrigation.
B. Mulching.
C. Planting cover crops
D. Building gabions.
167. Below is a small domestic animal reared in Kenya. Which of the following are the products from the animal above?
- A. Meat and milk.
B. Manure and meat.
C. Milk and skin.
D. Wool and manure.

168. Identify the animal drawn below.
- A. Goat.
 - B. Dog
 - C. Sheep.
 - D. Bull.
169. Which of the following shows a pair of tiny seeded crops?
- A. Sugarcane and banana.
 - B. Onions and tomatoes.
 - C. Pumpkin and cucumber.
 - D. Sunflower and carrots.
170. Which of the following is not a planting material for creeping crops?
- A. Seeds.
 - B. Hoes.
 - C. Scissors.
 - D. Manure. Burning candle
171. Which of the following is an example of creeping crops?
- A. Cactus.
 - B. Carrot.
 - C. Passion.
 - D. Pumpkin.
172. Which of the following is a deterrent of wild animals against farming activities?
- A. Scarecrow.
 - B. Chicken.
 - C. Mongoose.
 - D. Bananas.
173. All the following are ways of conserving water in the farm except
- A. mulching.
 - B. shading.
 - C. thinning.
 - D. cover cropping.
174. Kwame came across a bare land with deep U-shaped channels as shown below.

Which type of soil erosion was this likely to be?

- A. Splash erosion.
- B. Rill erosion.
- C. Sheet erosion.
- D. Gully erosion.

M. AgriNutrition

175. Which of the following lists consists of accessories only?
- A. Lipstick, eye pencil, deodorants.
 - B. Deodorants, creams, nailpolish.
 - C. Perfumes, headgears, lotion.
 - D. Scarves, necklaces, wristbands.
176. A person between 13 and 19 years is
- A. a young man.
 - B. an underage.
 - C. a small lady.
 - D. an adolescent.
177. Which of the following diseases is non- communicable?
- A. Tuberculosis.
 - B. Malaria.
 - C. Epilepsy.
 - D. Covid-19.
178. Which of the following is not a factor to consider when making a budget?
- A. Taste and preference.
 - B. Amount of money.
 - C. The type of food.
 - D. The weather of the day.

179. The following are factors to consider when choosing buttons. Which one is not?
A. The person you are buying the buttons for
B. The colour of the garment
C. The size of the button
D. The number of button holes
180. Which or the following lists consists of a balanced diet?
A. Rice, meat, chapati.
B. Fish, orange, carrots.
C. Ugali, eggs, kales.
D. Chips, sausages, chicken.
181. A sufuria is a cooking equipment that is commonly cleaned using
A. Charcoal powder.
B. steelwool.
C. a sand paper.
D. egg shells.
182. The causes of obesity are listed below. Which one is not?
A. Excess intake of fat
B. Lack of regular exercises
C. Maintaining a healthy body weight
D. Eating junk foods
183. Which of the following foods can be stewed?
A. Meat
B. Cassava
C. Yams.
D. Cabbage.
184. Which of the following may be needed for baking?
A. Maize flour.
B. Oven.
C. Onions.
D. Tomatoes.
185. Which of the following is the first phase in high jump?
A. Landing.
B. Take off
C. The run.
D. Flight
186. Below are steps in the scissor technique in high jump. Arrange them in the correct order:
i. Approach
ii. The flight
iii. The take off
iv. Landing
A. (ii), (i), (iii), (iv)
B. (i), (iii), (ii), (iv)
C. (iv), (iii), (i), (ii)
D. (iii), (ii), (iv), (i)
187. Which one of the following is not a fault in a volleyball game?
A. Stepping on or over the line on a serve.
B. Reaching under the net and crossing the line.
C. Hitting the ball twice in a row.
D. Serving the ball over the net
188. A group of learners was seen practising single hand dig pass. Which game were they preparing for?
A. Handball.
B. Volleyball.
C. Football.
D. Basketball.
189. Which one of the following is not a quality of a good leader?
A. Charisma
B. High motivation
C. Good communication

- D. Selfish
190. Which of the following can be used to improvise a relay baton?
A. Broken glasses.
B. Maize stalks.
C. Old clothes.
D. Thread.
191. Smitts are worn to protect our
A. hands
B. eyes
C. knees.
D. elbows.
192. Which of the following is not a pool activity?
A. Crouch surface dive.
B. Backstroke
C. Standing surface dive.
D. Punting.
193. When practising tapping in soccer, we can use our
A. heads.
B. hands.
C. elbows .
D. highs.
194. How many players make up one kabaddi team?
A. 7
B. 11
C. 12
D. 6
195. Which one of the following is not a track event?
A. Back stroke.
B. Bunch start.
C. Shoulder shrug
D. Drop finish.
196. Partner work can be applied in
A. swimming.
B. football.
C. athletics.
D. ropework.
197. Which of the following is not a rope work technique?
A. Wounded duck.
B. Pivoting.
C. Skier.
D. Heel taps.
198. Which equipment below is correctly matched with the event where they are used?
A. Baton - Javelin
B. Shot - Non-visual baton exchange
C. Javelin - Shot put
D. Cross bar - High jump
199. Scissor technique can be applied in
A. high jump.
B. soccer.
C. kabaddi.
D. softball.
200. Which of the following is not a function of leaves?
A. Photosynthesis.
B. Breathing.
C. Transpiration.
D. Absorption.