



**PRE-TECHNICAL**

1. Grade 7 teacher invited a resource person to teach the learners about personal safety. The learners were asked to mention some hazards to personal safety. Give five examples of hazards they were likely to mention **(5mks)**
  - a) \_\_\_\_\_
  - b) \_\_\_\_\_
  - c) \_\_\_\_\_
  - d) \_\_\_\_\_
  - e) \_\_\_\_\_
  
2. Mr. Makamu invited a veterinary doctor to treat his cows. Name two protective gear the veterinary doctor would wear for his safety. **(2mks)**
  - a) \_\_\_\_\_
  - b) \_\_\_\_\_
  
3. State three examples of careers that are related to safety at workplace **(3mks)**
  - a) \_\_\_\_\_
  - b) \_\_\_\_\_
  - c) \_\_\_\_\_
  
4. Prisca, a grade 7 learner, was asked to list examples of injuries that are likely to occur in the locality. Give **four** examples she was likely to list **(4mks)**
  - a) \_\_\_\_\_
  - b) \_\_\_\_\_
  - c) \_\_\_\_\_
  - d) \_\_\_\_\_
  
5. Grade 7 teacher listed the items below that are found in a First Aid kit. She asked the learners to state their uses. Give the answers they were likely to state. **(6mks)**
  - a) Gloves \_\_\_\_\_
  - b) Scissors \_\_\_\_\_
  - c) Thermometer \_\_\_\_\_
  - d) Tweezers \_\_\_\_\_

- e) Antiseptic solution \_\_\_\_\_
- f) Eyewash \_\_\_\_\_

6. Explain the procedure you would follow to provide First Aid to someone who has had burn. **(5mks)**
  - a) \_\_\_\_\_
  - b) \_\_\_\_\_
  - c) \_\_\_\_\_
  - d) \_\_\_\_\_
  - e) \_\_\_\_\_
  
7. Give **five** reasons why we need to observe safety in our day-to-day activities. **(5mks)**
  - a) \_\_\_\_\_
  - b) \_\_\_\_\_
  - c) \_\_\_\_\_
  - d) \_\_\_\_\_
  - e) \_\_\_\_\_
  
8. Grade 7 learners were discussing differences between metallic and non-metallic materials. Write the answers they discussed by filling in the table below. **(8mks)**

Metallic materials	Non-metallic materials
a) _____	_____
b) _____	_____
c) _____	_____
d) _____	_____

9. Name the materials used to make the items below **(5mks)**
  - a) \_\_\_\_\_
  - b) \_\_\_\_\_



\_\_\_\_\_



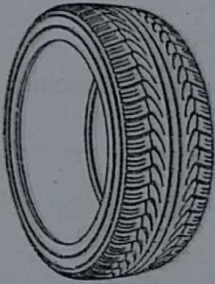
c)



d)



e)



10. Grade seven learners visited a Juakali workshop where metals are used to make different items. Identify 5 types of metals they were likely to observe

(5mks)

- a) \_\_\_\_\_
- b) \_\_\_\_\_
- c) \_\_\_\_\_
- d) \_\_\_\_\_
- e) \_\_\_\_\_

11. Explain two physical properties of ferrous metals

(2mks)

- a) \_\_\_\_\_
- b) \_\_\_\_\_

## LIFE SKILLS

1. Define what is self awareness

(2mks)

\_\_\_\_\_

\_\_\_\_\_

2. List down five contemporary challenges in our society today. (5mks)

- a) \_\_\_\_\_
- b) \_\_\_\_\_
- c) \_\_\_\_\_
- d) \_\_\_\_\_
- e) \_\_\_\_\_

3. What is self-esteem? (1mk)

\_\_\_\_\_

\_\_\_\_\_

4. State five factors that influence self esteem (5mks)

- a) \_\_\_\_\_
- b) \_\_\_\_\_
- c) \_\_\_\_\_
- d) \_\_\_\_\_
- e) \_\_\_\_\_

5. Write three characteristics of a person with low self esteem (3mks)

- a) \_\_\_\_\_
- b) \_\_\_\_\_
- c) \_\_\_\_\_

6. How can a grade 7 student enhance self esteem? (4mks)

- a) \_\_\_\_\_
- b) \_\_\_\_\_
- c) \_\_\_\_\_
- d) \_\_\_\_\_

7. What are emotions? (2mks)

\_\_\_\_\_  
\_\_\_\_\_

8. List down five different emotions expressed by human beings (5mks)

- a) \_\_\_\_\_
- b) \_\_\_\_\_
- c) \_\_\_\_\_
- d) \_\_\_\_\_
- e) \_\_\_\_\_

9. Write down three ways of managing emotions (3mks)

- a) \_\_\_\_\_
- b) \_\_\_\_\_
- c) \_\_\_\_\_

10. Define what is stress (2mks)

\_\_\_\_\_  
\_\_\_\_\_

11. What are the characteristics of a person having stress? (4mks)

- a) \_\_\_\_\_
- b) \_\_\_\_\_
- c) \_\_\_\_\_
- d) \_\_\_\_\_

12. Write down five common sources of stress (5mks)

- a) \_\_\_\_\_
- b) \_\_\_\_\_
- c) \_\_\_\_\_
- d) \_\_\_\_\_
- e) \_\_\_\_\_

13. Define what is a community (2mks)

\_\_\_\_\_  
\_\_\_\_\_

14. Grade 7 learners wanted to carry out a community service learning project. State five steps they would follow. (5mks)

- a) \_\_\_\_\_
- b) \_\_\_\_\_
- c) \_\_\_\_\_
- d) \_\_\_\_\_
- e) \_\_\_\_\_

15. Write down two places where people can offer community service (2mks)

- a) \_\_\_\_\_
- b) \_\_\_\_\_