

# KCSE PREMOCKS

## ALL SUBJECTS SET 2

Dear Candidates, Attempt these Joint Mocks!

For Marking Schemes Call 0705525657

NAME..... ADM.NO .....

### MATHEMATICS PAPER 1

1. Without using a calculator, evaluate.

(3mrks)

$$\frac{-8+(-5) \times (-8)-(-6)}{-3+(-8) \div 2 \times 4}$$

2. Evaluate without using a calculator

(2mrks)

$$\frac{\left(2\frac{3}{7} - 1\frac{5}{6}\right) \div \frac{5}{6}}{\frac{2}{3} \text{ of } 2\frac{1}{4} - 1\frac{1}{7}}$$

3. In fourteen years time, a mother will be twice as old as her son. Four years ago, the sum of their ages was 30 years. Find how old the mother was, when the son was born.

(4 mks)

4. A Kenya bank buys and sells foreign currencies as shown below

	Buying	Selling
	(In Kenyan shillings)	(In Kenyan shillings)
1 Hong Kong dollar	9.74	9.77
1 South African rand	12.03	12.11

A tourist arrived in Kenya with 105000 Hong Kong dollars and changed the whole amount to Kenyan shillings. While in Kenya, she spent Kshs. 403,897 and changed the balance to South Africa rand before leaving for South Africa. Calculate the amount, in South African rand that she received. (3 mrks)

5. a) Using a ruler and a pair of compasses only, construct a quadrilateral PQRS in which  $PQ = 5\text{cm}$ ,  $PS = 3\text{cm}$ ,  $QR = 4\text{cm}$ ,  $\angle PQR = 135^\circ$  and  $\angle SPQ$  is a right angle.  
(2mrks)

b) The quadrilateral PQRS represents a plot of land drawn to a scale of 1:4000. Determine the actual length of RS in meters.  
(2mrks)

6. The ratio of goats to cows in a farm is 2:5 while the ratio of sheep to cows is 3:4. If there are 15 sheep, how many animals are there in farm farm.

(2mrks)

7. Mr. Maina who deals in electronics sells a radio to a customer at Ksh. 1440 after giving a discount of 10% but find that he makes a 20% profit. Find the profit Mr. Maina would make if he does not give a

discount.

(3mrks)

8. use the reciprocal and square table to evaluate to four significant figure, the expression.(3mrks)

$$\frac{1}{0.03654} - 4.151^2$$

9. Simplify the following expression completely.

(3mrks)

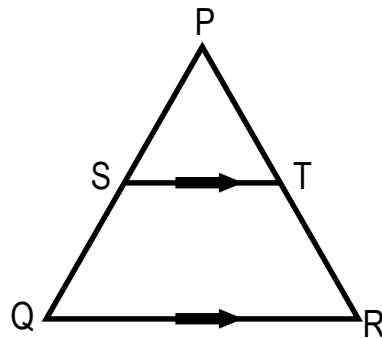
$$\frac{12a^2 - 3b^2}{2a^2 - ab - b^2}$$

**FOR MARKING SCHEMES CALL/TEXT/WHATSAPP**

**0705525657/0770195807**

10. Given that  $\sin (x + 60)^\circ = \cos (2x)^\circ$ , find  $\tan (x + 60)^\circ$ .  
(3mrks)

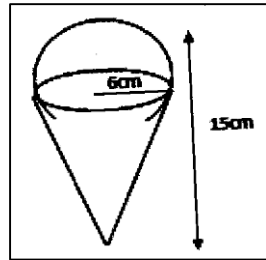
11. The figure below shows triangle PQR in which  $PR = 12$  cm, T is a point on PR such that  $TR = 4$ cm. line ST is Parallel to QR



If the area of triangle PQR is  $336 \text{ cm}^2$ , find the area of the quadrilateral QRTS. (3mrks)

12. A square brass plate is 2 mm thick and has a mass of 1.05 kg. The density of the brass is  $8.4 \text{ g/cm}^3$ . Calculate the length of the plate in centimeters  
(3 mks)

13. The diagram below represent a solid made up of a hemisphere mounted on a cone. The common radius is 6 cm and the height of the solid is 15cm.



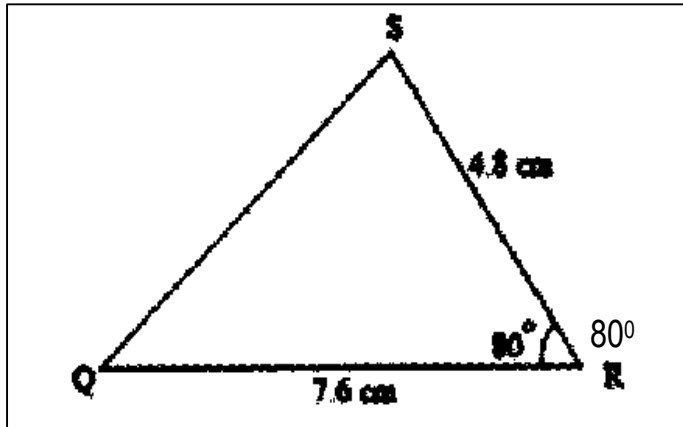
Calculate the external surface of the solid  
(Mrks)

(4)

14. Solve the simultaneous inequalities given below and list all the integral values of x  
(3mks)

$$\frac{3-x}{2} \geq \frac{x+1}{3} \geq \frac{2x+1}{-3}$$

15. A construction company employs technicians and artisans. On a certain 3 technicians and 2 artisans were hired and paid a total of Ksh9000.  
On another day the firm hired 4 technicians and one artisan and paid a total of Ksh 9500.  
Calculate the cost of hiring two technicians and 5 artisans in a day



16. The figure below is not drawn to scale.

Find correct to 1 decimal place;

(a) Length PQ.

(2 mark).

(b) Angle ABC  
mark

(2

**SECTION II(50 marks)**

CHOOSE ANY FIVE QUESTIONS IN THIS SECTION

17. Two lines  $L_1: 2y - 3x - 6 = 0$  and  $L_2: 3y+x-20 = 0$  intersect at point A.

(a) Find the coordinates of A.

(3 Mrks)

**FOR MARKING SCHEMES CALL/TEXT/WHATSAPP**

**0705525657/0770195807**

- (b) A third line  $L_3$  is perpendicular to  $L_2$  at point A. Find the equation of  $L_3$  in the form  $y = mx + c$ , where  $m$  and  $c$  are constants.  
(3 mark)

- (c) Another  $L_4$  is parallel to  $L_1$  and passes through  $(-1, 3)$ . Find the  $x$  and  $y$  intercepts of  $L_4$ .  
(4 mark)

18. Town B is 180km on a bearing  $050^\circ$  from town A. Another town C is on a bearing of  $110^\circ$  from town A and on a bearing of  $150^\circ$  from town B. A fourth town D is 240 km on a bearing of  $320^\circ$  from A. Using scale drawing, such that 1cm rep 30km,

- (a) Show the relative position of the towns (4 mks)
- (b) Using the diagram, find
- (i) Distance AC (2 mrks)
- (ii) Distance CD (2 mrks)
- (iii) Compass bearing of C from D (2 mrks)

19. The table shows the marks obtained by 40 candidates in an examination

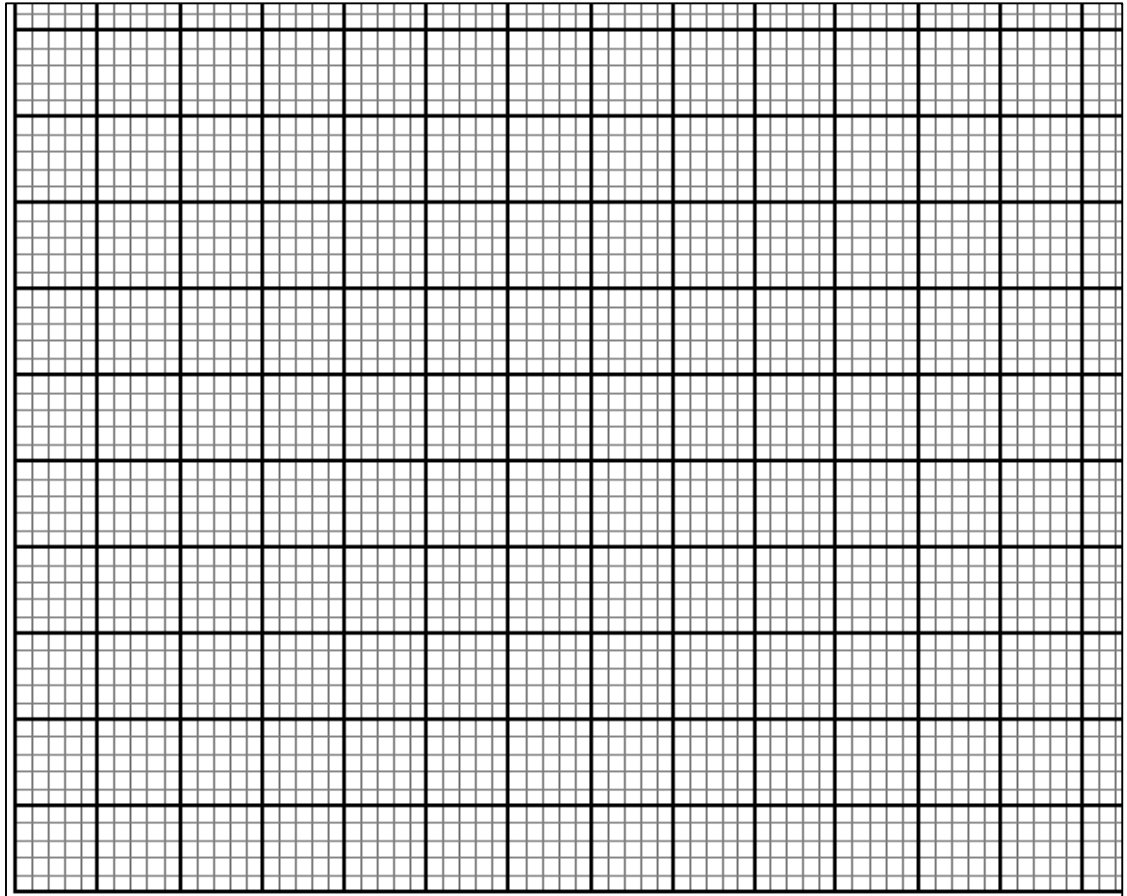
Frequency					

a) Find the value of X (1mk)

b) Calculate the mean mark (2mrks)

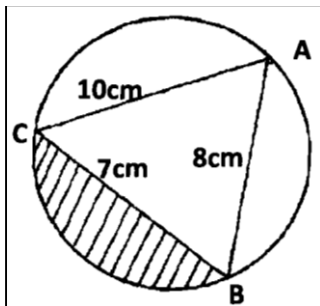
c) On the grid provided below draw a histogram to represent the data (4mrks)





d) drawing a straight line on the graph above determine the median mark (3mrks)

20. The figure below shows a triangle **ABC** inscribed in a circle. **AC** = 10cm, **BC** = 7cm and **AB** = 10cm.

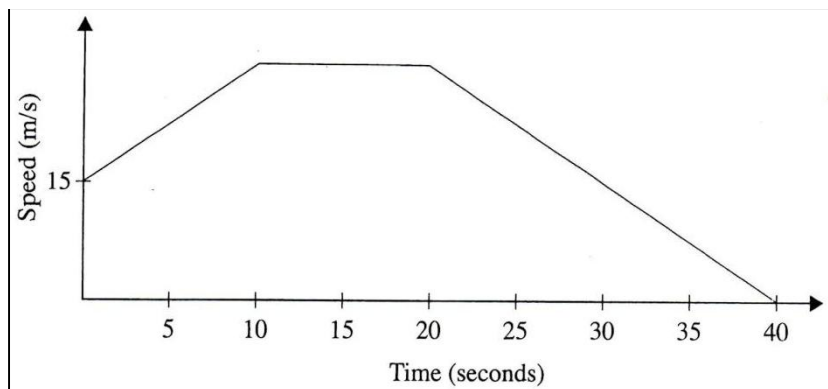


(a) Find the size of angle **BAC**. (3 Mks)

(b) Find the radius of the circle. (2 Mks)

(c) Hence calculate the area of the shaded region. (5 Mks)

21. The figure below represents a speed time graph for a cheetah which covered 825m in 40 seconds.



(a) State the speed of the cheetah when recording of its motion started (1 mk)

(b) Calculate the maximum speed attained by the cheetah (3mks)

(c) Calculate the acceleration of the cheetah in:  
(i) The first 10 seconds (2mks)

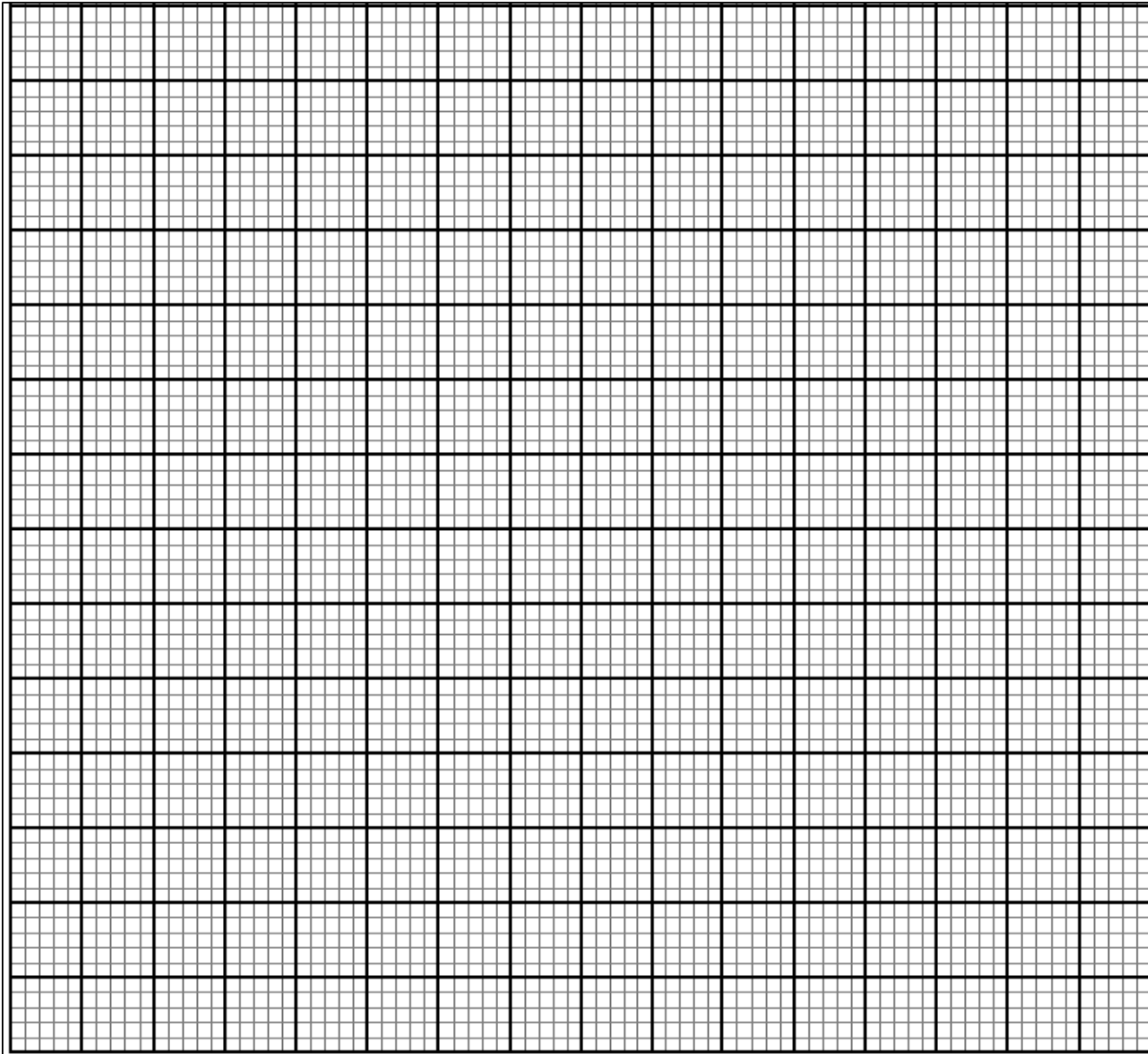
(ii) The last 20 seconds  
(1mk)

(d) Calculate the average speed of the cheetah in first 20 seconds  
(3mks)

22. Given the quadratic function  $y=3x^2 + 4x - 1$

a) Complete the table below for values of x ranging -  $4 \leq x \leq 3$ . (2mks)


b) Using the grid provided draw the graph of  $y = 3x^2 + 4x - 2$  for  $-4 \leq x \leq 3$  (3mks)



c) Using the graph, find the solution to the equations.

i)  $3x^2+4x-2=0$

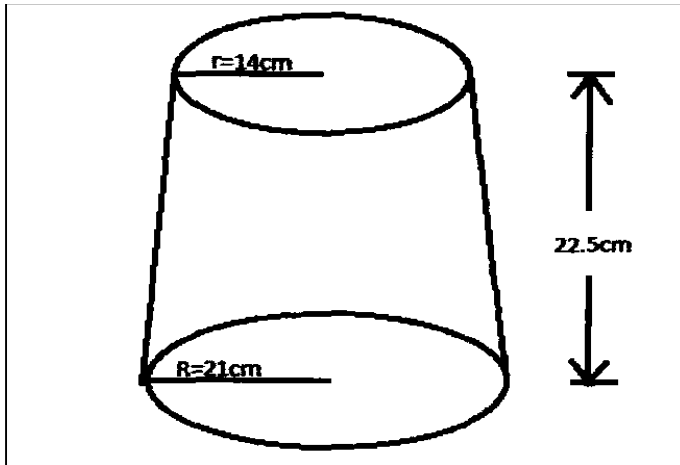
(2mks)

ii)  $3x^2+7x+2=0$

(3mks)

23. The diagram represents a solid frustum with base radius 21cm and top radius 14cm. The frustum is 22.5cm high and is made of a metal whose density is 3 g/cm<sup>3</sup>.

(Take  $\pi = \frac{22}{7}$ )



a) Calculate

- (i) The volume of the metal in the frustum.

(5 marks)

- (ii) The mass of the frustum in kg.

(2 marks)

- b) The frustum is melted down and recast into a solid cube. In the process 20% of the metal is lost. Calculate to 2 decimal places the length of each side of the cube.

(3 marks)

24. A saleswoman is paid a commission of 2% on goods sold worth over Ksh 100,000. She is also paid a monthly salary of Ksh 12,000. In a certain month, she sold 360 handbags at Ksh 500 each.

a) Calculate the saleswoman's earnings that month.

(3 mks)

b) The following month, the saleswoman's monthly salary was increased by 10%. Her total earnings that month were Ksh 17,600.

Calculate:

i) The total amount of money received from the sales of handbags that month.

(5 mks)

ii) The number of handbags sold that month.

(2

Mks)

# KCSE PREMOCK SET 2

**MATHEMATICS**

**PAPER 2**

**TIME: 2½ HRS.**

**SECTION**

1. Use logarithms to evaluate.

$$\frac{4.497 \times \sqrt{0.3673}}{1 - \cos 81.53^\circ}$$

3mks

2. The sum of the fifth and sixth term of an AP is 30. If the third term is 5. Find the first term.

3mks

3. Make K the subject of the formula and simplify.

3mks

$$t = \frac{2y + 1}{\sqrt{2ky + k}}$$

4. Solve for x

$$2 - (\log \log X)^2 = 3 \log \log X - \log \log X^2 = 3 \log \log X$$

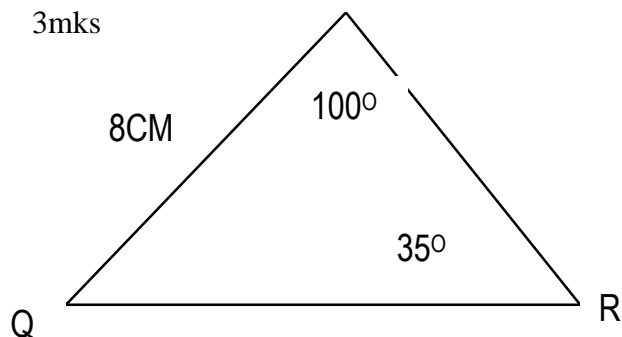
3mks

**FOR MARKING SCHEMES CALL/TEXT/WHATSAPP**

**0705525657/0770195807**

5. The sides of a triangle were measured and recorded as 4cm, 6.2cm and 9.50cm. Calculate the percentage error in its perimeter correct to 2 decimal places.  
3mks

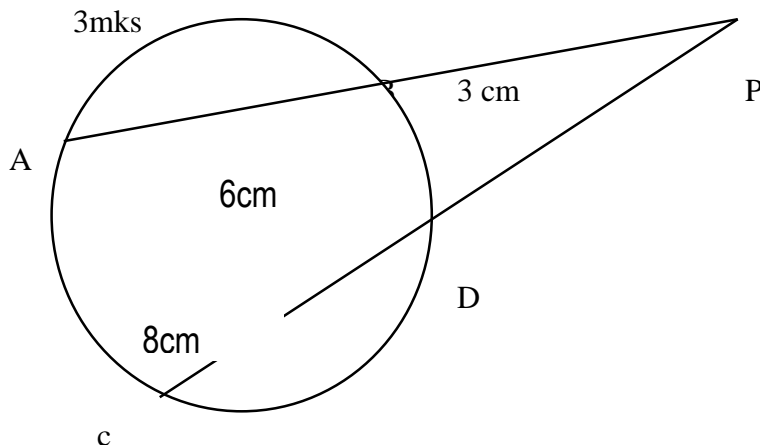
6. The figure below shows a triangle PQR in which PQ=8cm and angle QPR=100° and angle PQR=35°. Calculate to 2 decimal places the length of QR and hence the area of triangle PQR to 2 decimal places.  
3mks



7. (a) Expand  $(1-2x)^6$  up to term in  $x^3$ .  
2mks

- (b) Use the expansion above to evaluate  $(1.02)^6$  correct to 4 decimal places. 2mks

8. Find the length of DP in the figure.  
3mks





9. Given the matrix  $\begin{pmatrix} 5 & -x & 2 & 3x & 4 \end{pmatrix}$  has no inverse, find the value of x.

2mks

10. Without using a calculator solve  $\frac{\sqrt{252} + \sqrt{72}}{\sqrt{32} + \sqrt{28}}$  leaving your answer in the form  $a\sqrt{b+c}$  where a,b and c are integers.

4mks

11. Find the radius as the center of a circle whose equation is

$$3x^2 + 3y^2 + 18y - 12x - 9 = 0$$

3mks

12. A new laptop depreciates at 8% per annum in the first year and 12% per year in the second year. If its value at the end of the second year was sh.121,440, calculate its original value.

3mks

13. Given that C varies partly as A and partly as the square of A and that C=20 when A=2 and C=21 when A=3, determine the value of C when A=4.

3mks

14. The size of an interior angle of a regular polygon is  $6\frac{1}{2}$  times that of its exterior angle determine the number of sides of the polygon. (3 mks)

15. Given that the ration  $x:y=2:3$  find the ratio  $(5x-2y):(x+y)$ .

3mks

16. Kiprono buys tea costing sh 112 per kilogram and sh.132 per kilogram and mixes them, then sells the mixture at sh.150 per kilogram .If he is making a profit of 25% in each kilogram of the mixture ,determine the ratio in which he mixes the tea. 4mks

**SECTION II(ANSWER ONLY FIVE QUESTIONS)**

17. Mrs.Langat ,primary school head teacher earns a basic salary of sh.38,300 house allowance of sh.12,000 and radical ,allowance of sh.3,600 every month. She claims a family relief of sh.1172 and insurance relief of 10% of the premium paid. Using tax rates table below.

<b>Taxable income £(p.a)</b>	<b>Tax (ksh /£)</b>
1-8800	2
8801-16800	3
16801-24800	5
24801-36800	7
36801-48800	9
Over 48800	10

a. Calculate Mrs.Langats annual taxable income in Kenya pound per annum.

2mks

b. Tax due evenly month from Mrs.Langat.

4mks

c. If the following deductions are made every month from her salary,  
w.c p.s 2 % of basic salary  
life insurance premium of sh.4600  
sacco van repayment of sh.14,200  
Calculate

i. the total deductions.  
2mks

ii. Her net pay for very month.  
2mk

iii.

18. A bag contains 5 red balls, 3 blue balls and 4 yellow balls. Two balls are drawn at random one after the other without replacement.

a. Draw a tree diagram to illustrate his pickings.  
2mks

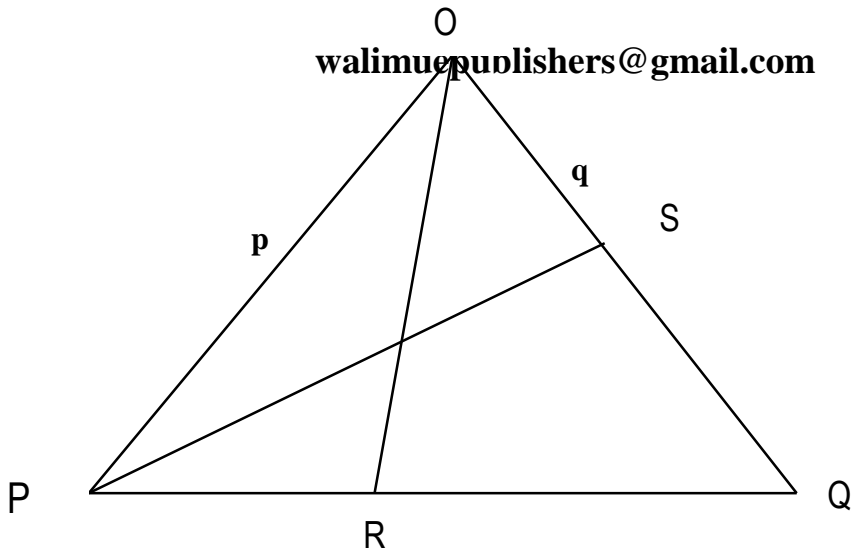
b. Calculate the probability that

i. Both balls picked were red.  
2mks

ii. Both balls picked were of the same colour.  
3mks

iii. There was no red ball from the two balls picked.  
3mks

19. In the triangle given below  $\vec{OP} = \mathbf{p}$  and  $\vec{OQ} = \mathbf{q}$ . R is a point on  $\vec{PQ}$  such that  $PR:RQ = 1 : 3$  and that  $5OS = 2OQ$ . PS and OR intersect at T.



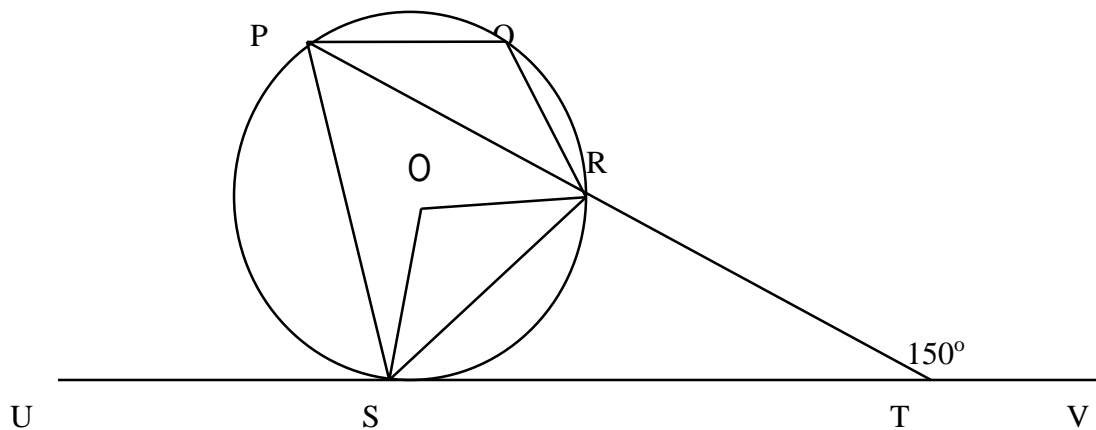
a. Express in terms of  $\mathbf{p}$  and  $\mathbf{q}$ .

(e)  $OS \rightarrow$   
1mk

(f)  $PQ \rightarrow$   
1mk

b. Given that  $\mathbf{OT} = h \mathbf{OR}$  and  $\mathbf{PT} = k \mathbf{PS}$ , determine the values of  $h$  and  $k$ .  
6mks

20. In the figure below, P, Q, R and S are points on the circle centre O. PRT and USTV are straight lines. Line UV is a tangent to the circle at S.  $\angle RST = 50^\circ$  and  $\angle RTV = 150^\circ$ .



a. Calculate the size of

i.  $\angle ORS$  2mks\

**FOR MARKING SCHEMES CALL/TEXT/WHATSAPP**

**0705525657/0770195807**

ii.  $\angle USP$  1mk

iii.  $\angle PQR$  2mks

b. Given that  $RT=7\text{cm}$  and  $ST=9\text{cm}$ , calculate to 3 significant figures

i. Length of the line PR 2mks

ii. The radius of the circle. 3mks

21. The product of the first three terms of geometric progression is 64. If the first term is  $a$  and the common ratio is  $r$ ;

25. Express  $r$  in terms of  $a$   
3mks

26. Given that the sum of the three terms is 14

i. Find the values of  $a$  and  $r$ , hence write down two possible sequences each upto 4<sup>th</sup> term.  
5mks

ii. Find the sum of the first 5 terms of each sequences.  
2mks

22. A water vendor has a tank of capacity 18,900 litres. The tank is being filled with water from two pipes A and B which are closed immediately when the tank is full. Water flows at the rate  $150,000\text{cm}^3/\text{minute}$  through pipe B.

- a. If the tank is empty, and the two pipes are opened at the same time, calculate the time it takes to fill the tank.

5mks

- b. On a certain day the vendor opened the two pipes A and B to fill the empty tank. After 25 minutes he opened the outlet tap to supply water to his customer at average rate of 20 litres per minute. Calculate the time it took to fill the tank on that day.

5mks

23. Three variables  $p$ ,  $q$  and  $r$  are such that  $p$  varies directly as  $q$  and inversely as the square of  $r$ .

- (a) When  $p=9$ ,  $q=12$  and  $r=2$ .  
Find  $p$  when  $q=15$  and  $r=5$

(4mks)

- (b) Express  $q$  in terms of  $p$  and  $r$ .

(1mks)

- (c) If  $p$  is increased by 10% and  $r$  is decreased by 10%, find;  
(i) A simplified expression for the change in  $q$  in terms of  $p$  and  $r$

(3mks)

- (ii) The percentage change in  $q$ .  
(2mks)

24. The table below shows some values of the curve  $y = 2\cos x$  and  $y = 3 \sin x$ .

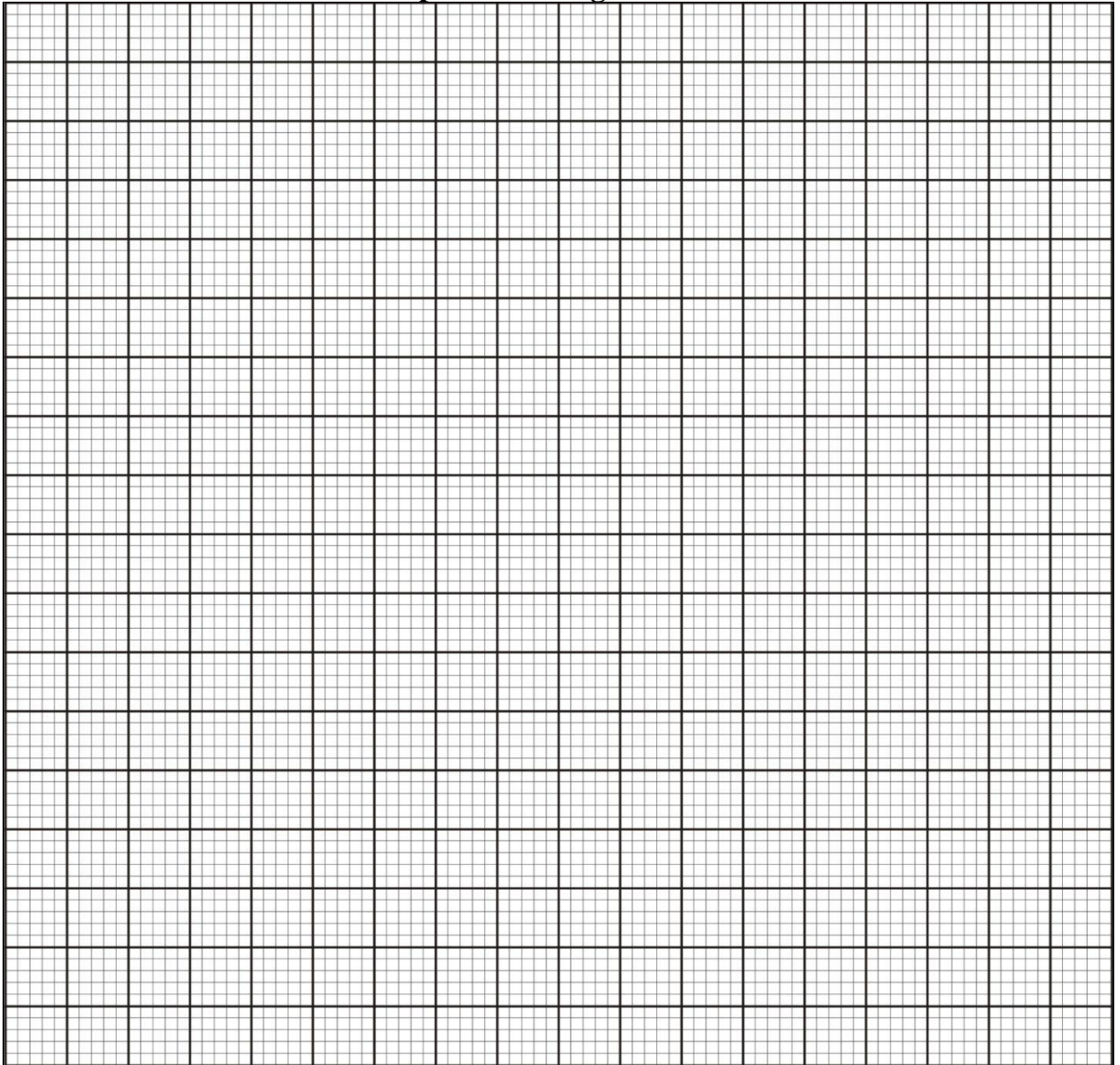
(iii) Complete the table for values  $y = 2\cos x$  and  $y = 3 \sin x$ , correct to 1 decimal places.

3mks

$x$	$0$	$30^\circ$	$60^\circ$	$90^\circ$	$120^\circ$	$150^\circ$	$180^\circ$	$210^\circ$	$240^\circ$	$270^\circ$	$300^\circ$	$330^\circ$	$360^\circ$
$y = 2\cos x$	2		1	0			-1.7	-1.7	-1		1	1.7	2
$y = 3\sin x$	0	1.5		3	2.6				-2.6			-1.5	0

On the grid provided draw the graphs of  $y = 2 \cos x$  and  $y = 3 \sin x$  for  $0^\circ \leq x \leq 360^\circ$  on the same axis.

5mks



a. Use the graph to find the values of  $x$  when  $2\cos x - 3\sin x = 0$ .  
2mks

b. Use the graph to find the values of  $y$  when  $2\cos x = 3\sin x$ .  
1mk



# KCSE PREMOCK SET 2

## ENGLISH

### PAPER 1

#### (FUNCTIONAL SKILLS)

a) You are the manager of Quick Safaris Transport Company. Of late you have realized that the workers, mainly drivers and conductors have lost discipline, and this has made the company incur a lot of losses.

(g) Write an internal memo to them, warning them of dire consequences if they do not change their behaviour and attitude.

Some of the areas you wish to address are:

1. Punctuality
2. Foul language
3. Lack of courtesy
4. Police bribery
5. Any other relevant area from your observation

(13 marks)

.....  
.....  
(a) Design a Card inviting the workers to a motivational talk with an aim of changing their behaviour and attitude.

marks)

(7

.....  
.....  
**d. CLOZE TEST (10MKS)**

**Fill in the blank space in the passage with the most appropriate word**

The issue of birth certificates as a (1)\_\_\_\_\_ for registration of candidates has ignited a lot of concern for parents with students sitting for this year's examinations. Whereas we are concerned about the issue of foreigners in this country. This directive has (2)\_\_\_\_\_ many parents and students alike unprepared. (3) \_\_\_\_\_ instance, most students sitting in this year's K.C.S.E were born in the late 90s and if they happen not to have even birth certificates, which is (4)\_\_\_\_\_ likely, it also means that they don't have even their birth notification cards. (5)\_\_\_\_\_ birth certificates under these circumstances, and within the given time frame, is (6)\_\_\_\_\_. The authorities

**FOR MARKING SCHEMES CALL/TEXT/WHATSAPP**

**0705525657/0770195807**

(7)\_\_\_\_\_with the issuance of these documents

(8)\_\_\_\_\_

process them urgently. (9)\_\_\_\_\_ is a serious matter. Candidates have been given a very short time to (10) these documents.

**Oral Skills**

**(30marks)**

3.

(iv) **Read the poem below and then answer the questions that follow.**

Her lip suckle the nipples  
Milk bubbles, foams and ripples  
Little hands up in the air  
Catch on the mother's hair  
Sweet sensation rises in pressure  
Tiny legs kick with pleasure  
Sleep comes gently and strong  
Sleep whispers softly and long.

*(EmusaraOssieEnekase)*

iv. Identify any two pairs of rhyming words in the poem.

(1mk)

.....  
.....

v. Identify one major sound pattern in the poem.

(1mk)

vi. Give two examples of the above sound pattern.

(2mks)

.....  
.....

vii. How would you perform the last two lines of the poem?

(3mks)

.....  
.....

(v) In the following word clusters, underline the word pronounced differently.

(5 mks)

27. floor, flower, flour

28. toe, two, tow

29. canal, kernel, colonel

**FOR MARKING SCHEMES CALL/TEXT/WHATSAPP**

**0705525657/0770195807**

30. machine, shilling, chores, chef

(vi) Challenger: Two Europeans peeping through the window.

Response : Mucus

iv. Classify the above genre.  
(1mk)

.....  
v. Identify and illustrate the most outstanding stylistic device used in the above genre. (1mk)

.....  
vi. Give two functions of the above genre.  
(2mks)

.....  
(vii) In the words below, underline the part that should be stressed.  
(4mk)

iv. Suc.cess

v. ad.vice

vi. Chal.lenge

vii. ob.serve

(viii) Give a word with a similar pronunciation  
(4mks)

c. Muscle

d. Worn

e. Come

f. Which

(ix) **The following is a conversation between a father and his daughter. Read through it.**

DAUGHTER: (*Shortly after having arrived home from school*) Good afternoon, Daddy.

FATHER: (*Sitting complacently in the sofa, reading a newspaper. Looking up.....*)

Good afternoon.(*Resumes reading*).

DAUGHTER: (*Holding out her school report form*) Daddy, I'm excited. My classteacher said

I was the best improved. I was...

FATHER: Oh, you were? Me, I used to be number one. I was absolutely unbeatable.

DAUGHTER: Chemistry has been a particular headache(*now looking at the report form which*

*she thought her father would wan see*), but this time...

**FOR MARKING SCHEMES CALL/TEXT/WHATSAPP**

**0705525657/0770195807**

**walimuepublishers@gmail.com**

- FATHER: (*Stretching his arms, looking preoccupied*)  
Chemistry for me was particularly easy.  
I never scored anything less than 90%.
- DAUGHTER: Dad, I was going to tell you that this time...
- FATHER: (*Absent-mindedly*) By the way, where is your mum?
- DAUGHTER: Mum is in the garden picking vegetables. But Dad, you are not listening to my story. I was telling you about Chemistry.
- FATHER: You mean you have a story about Chemistry? Chemistry is not about stories.  
It is a hard science.
- DAUGHTER: It's about my improvement...
- FATHER: (*Laughing*) *Me*, it wasn't a matter of improvement. I was always at the top of the class.
- DAUGHTER: Daddy, I give up. You are not listening.
- FATHER: (*looking surprised*) Listening? I heard you: you were talking about improvement in Chemistry, weren't you?
- DAUGHTER: Anyway, Dad. Thank you for paying attention. Enjoy your newspaper.
- FATHER: Oh, yes I'm reading an interesting story about politics.

Identify six(6) shortcomings in the father's listening skills.

**FOR MARKING SCHEMES CALL/TEXT/WHATSAPP**

**0705525657/0770195807**

# **KCSE PREMOCK SET 2**

## **ENGLISH**

### **PAPER 2**

#### **(Comprehension, Literary Appreciation and Grammar)**

#### **COMPREHENSION**

**Read the following passage and then answer the questions that follow.**

Unscrupulous as he was, Kwame Asante had a qualm as he looked at the woman sitting on the African stool near the bed. He had called her and yet when she came he did not quite know how to begin the conversation.

“Akosua, how would you like fifty pounds to start a small business of your own – selling cloths or perfume and powder?” The woman smiled nervously. Ten years of married life had made her wary of her husband’s fits of generosity.

She was as black as ebony, with the fine features peculiar to the girls of the Akwapim hills; graceful in her brown and red design cloth and the lovely silk head-tie wrapped round her head. Her feet were shod in ‘spitfire’ sandals and on her tiny ears she had the popular golden ear-rings named ‘Abongo’.

The slender woman on the stool was the mother of three children though she still looked a girl. Married under the native customary law, she had served her lord and master with zeal and zest. It is a law which as some other law in the Gold Coast, needs disinfecting for though it aids the man to gain his desire when it is at its fiercest, it in no way safeguards the position of the woman when the man’s passion abates.

“Would you like fifty pounds?” asked Kwame again. “Could make it a hundred. You have been a very good wife to me, Akosua.” Did the truth begin to dawn on the woman’s consciousness? No. She thrust the thought away from her. ‘He could not do it’.

Kwame cleared his throat – after all he might as well get it off his chest: hadn’t she noticed that the whole relationship had become impossible? A cloth woman was all right when one was young and struggling. She could be so useful – a general servant, and yet a wife. Akosua was so gentle, and even quite refined, but a man needs a change. He had just completed his two-storied building and he had been made a committee member of an important club. The other day his academy had conferred on him an associateship and his university had given him a coveted degree. He had at last achieved his ambition and had become an important man in the community. He was thinking seriously of entering the town council.

Fancy being addressed councilor Kwame Asante, O.B.A.... A.S.S. He smiled inanely to himself. Akosua looked at him in wonder.

“Er..... er.... Akosua...., I want to tell you I am going to marry a lady; you will be paid off with a hundred pounds. A.... frock..... lady....um.....er .... of course you can read and write Ga and Twi but my friends will call you an illiterate woman.”

“Did you consult your friends before you married me ten years ago?” The voice was cold and calm, yet the words cut like a whip.

“If you are going to be impertinent, I shall not discuss the matter further.” He got up and walked up and down the room. “How many men in the Gold Coast will pay a woman off with one hundred pounds? You are only entitled to twenty-five pounds and here I am out of

**FOR MARKING SCHEMES CALL/TEXT/WHATSAPP**

**0705525657/0770195807**

kindness offering you a hundred. Show some gratitude, Akosua.” Akosua looked at him. Stark misery was in her eyes.

“I shall send the children to Achimota College.” There was a whining note in his voice. “I am only doing this because of my position in society. You see I may be called to Government House and other important places..... say something Akosua.

“I say you can keep your twenty five pounds, fifty pounds or a hundred pounds. I will have nothing to do with it. I will not be paid off.

“What! What! Come! Come! Don’t do anything rush!”

“If you dare touch me I shall strike your face.”

“Strike your master, your husband! Are you mad?”

“I shall leave this house.”

“If you dare to disgrace me by leaving the house before I am ready for you to go, there will be trouble. I do not intend to put up with a willful woman. What is my sin after all? I only want to become a decent and respectable member of society. If you leave this house without my knowledge and permission, I shall claim every penny I have spent on you since I married and lived with you these ten years; and not only that but I shall claim all the presents I have given to your parents and other relatives. You know our native customary law.”

“Yes, I know your native customary law. It is a grave to bury women alive whilst you men dance to the tom-tom on top of the mound of earth.”

### **Questions**

Why does Akosua smile nervously when Kwame offers her fifty pounds to start a small business of her own?

(2mks)

.....  
.....  
.....  
.....  
.....

Explain the effect of Akosua’s silence on Kwame?

(2mks)

.....  
.....  
.....  
.....

In not more than 60 words, summarize the reasons for Kwame’s intention to marry another wife.

(4mks)

.....  
.....

**FOR MARKING SCHEMES CALL/TEXT/WHATSAPP**

**0705525657/0770195807**

Identify a statement from the passage which proves that Kwame was ashamed of the action he was about to take.

(1mk)

.....

What is Kwame Asante's burning ambition? (1mks)

.....

.....

Rewrite the following sentence in reported speech

*'Did you consult your friends before you married me ten years ago?' Akosua asked Kwame.*

(1 mks)

.....

.....

.....

Give an instance of irony in the passage. (2mks)

.....

.....

.....

*'It is a grave to bury women alive whilst you men dance to the tom-tom on top of the grave.'*

Explain the meaning of this statement. (2 marks)

.....

.....

.....

What is Kwame's attitude towards women? (2mks)

.....

.....

Explain the meaning of the following words and phrases as used in the passage. (3 mks)

Disinfecting

.....

The words cut like a whip

.....

Impertinent

.....

**LITERARY APPRECIATION:**

**BLOSSOMS OF THE SAVANNAH**

**Read the following excerpt and answer the questions that follow.**

Although Resian had a lot to complain and grumble about in life in their new environment, Taiyo found it tolerable. For instance, she gladly discovered that mornings in their new home began with a lively chatter of birds in the trees surrounding their house. That gave the home an atmosphere of tranquility and peace. However, one of the unpleasant aspects that the girls had to live with was the constant violation of their privacy. In Nasila, they soon discovered, the home belonged to all the clan members. It was not an unusual thing to get up in the morning to find the living room full of men and women who came early, not for any tangible business, but simply to share a sumptuous breakfast with their kith and kin. Taiyo and Resian were soon to get used to hearing an urgent knock at the door very early in the morning. On opening, they would invariably be met by a grinning group of men or women who would unashamedly ask them what they were doing in bed that late in the morning. They would proceed to take seats in the living room and order them to serve them breakfast. When they got used to what at first, they considered negative aspects of the Nasila culture, Taiyo and Resian adjusted accordingly and soon they began to live harmoniously with the people. Their father was out of the homestead most of the time working at the shop and organizing other business matters. His absence meant the absence of his irksome and corrosive remarks that always heightened tension in the house. In his absence, the house was a continuous joy with comfort and conveniences, and the girls found it pleasurable to keep it clean and well-arranged.

**Questions**

What happens immediately after this extract? (5 marks)

.....  
.....  
.....

Where had the family been living before and why did they move? (3 marks)

.....  
.....  
.....

Give the character traits of the following: (6marks)

**FOR MARKING SCHEMES CALL/TEXT/WHATSAPP**

**0705525657/0770195807**



Taiyo

The people of Nasila

.....  
.....  
Discuss a theme implied in the extract. (4 marks)

.....  
.....  
Using the rest of the book, cite and explain one cultural aspect that had a life changing effect on the lives of the two girls (4mks)

.....  
.....  
Explain a stylistic device used in the extract. (2mks)

.....  
.....  
Taiyo and Resian adjusted accordingly? Add a question tag. (1mk)

.....

### ORAL LITERATURE

#### The Man, His Son and The Squirrel

There was a certain town whose only occupation was catching squirrels (ground squirrels). There was a man in this town who excelled at catching squirrels. One squirrel was so smart that it eluded everyone in town. It was said that only this man said to his son, "Come, let's go to catch the squirrel." They took an axe; they found the squirrel near its hole. Then the squirrel ran and entered its hole. They searched out all the holes, then they stopped them up. Then the man said to his son, "Don't let the quirrel get out of its hole." He answered, "Okay." But one hole wasn't stopped up, and the squirrel escaped. When it escaped, the father came to his son and said to him, "Why did you let it escape? If I go home now, I will beashmed." He grabbed the axe and struck his son. Then he went on his way and left his son unconscious. Ants began to fill his eyeballs an his ears; vultures were circling above him.

In the afternnon, the headman of a rich caravan arrived at the spot. When he arrived, he setp up camp. Then he got up and went for a stroll and saw the boy. He called his slaves to take him and have him washed and shaved. The boy recovered. The headman had no offspring. When he took the boy, he decided that he would make him his son. He sent a message to the chief of the town, telling him that he had an offspring, that he was happy he had become a complete man, and that he would now receive the gifts due to him.

**FOR MARKING SCHEMES CALL/TEXT/WHATSAPP**

**0705525657/0770195807**

The chief said, "This is a lie. He is not his son. If he is his son, then let him come that I can see." Then the headman arrived in town. The chief gave his sons horses worth ten pounds. He said, "Go and join the son of the headman. Have a race. When you finish give these horses away" (forcing him to do the same). They did it and they returned. the next day, the chief again gave them horses worth ten pounds. They did as the day before. They did it five times. They ran out of horses. Then the chief said, "Indeed, it is his son I have run out of horses. If it weren't his son, he wouldn't agree to let him give his own horses away to match the presents." Then the chief summoned his daughter. The Gralladima brought his to help. The Madaki also gave, and the Makama gave. Altogether, four wives. The chief gave a big house. The headman came and brought twenty concubines and gave to his son. There was continuous feasting.

Then one day the son saw his father, the one who had knocked him down with the axe because of the squirrels. The father came to the house of his son and said, "Throw away your gown and start catching squirrels." The slaves of the headman said, "This is a crazy man, let us all strike him." The boy said to him, "This is my father, the one who sired me." The headman said, "I have already lied to the chief. Let us keep that secret. I will give your father wealth. Let him go home. Should he want to see you, let him come to visit you. If you want to see him, then you can go and visit him." The real father said he did not agree. Then the headman said, "Well then, let us go out in the countryside." They went. The headman unsheathed his sword. He handed it to the son, and said, "Kill one of the two of us." Here ends the story.

**Questions**

(i) Classify the above narrative. (1 mk)

.....  
.....

What is the function of this narrative? (1 mk)

.....  
.....

Identify and illustrate any three features of oral narrative evident in the story. (6 mks)

.....  
.....

Give one economic activity that is undertaken by the community referred to in this narrative.

(2 mks)

.....  
.....

Describe the character of the following:

The young man

(2 mks)

**FOR MARKING SCHEMES CALL/TEXT/WHATSAPP**

**0705525657/0770195807**

.....  
.....

(ii) his father (2 mks)

.....  
.....

(e) Whom do you think would be the most appropriate audience of this story. (2 mks)

.....  
.....  
.....

(f) What is the moral lesson of this narrative? (2 mks)

.....

**GRAMMAR**

**Rewrite the following sentences as instructed.**

(i) (a) The photographs will be taken at the venue of the wedding. The photographs will be taken in a reputable studio. (Combine into one sentence using 'either .....or,,,') (1 mk)

.....

(b) Neither the children nor the peasant ..... allowed to go to the hall yesterday. (Rewrite filling the blank with an appropriate auxiliary verb). (1 mk)

.....

.....

.....

.....

(ii) (a) The principal noticed serious laxity among the students. He warned them against such behaviour. (Combine the sentence using present participle. ) (1 mk)

.....

.....

.....

.....

(b) The farmer's cow gives twenty-five kilos of milk everyday. He feeds and waters it very well. (Combine using the present participle). (1 mk)

.....  
.....  
.....  
.....

(iii) Underline the gerund in the following sentence.

Kibet is studying but swimming is his hobby. (1 mk)

(iv) Replace the underlined word with a phrasal verb.

It is not good to despise other people. (1 mk)

.....  
.....

I am currently living with my brother in Karen. (1 mk)

.....  
.....

The principal was annoyed with the three boys. (1 mk)

.....  
.....

**Rewrite the following sentences correcting the errors.**

(i) There are situations of which you need to act with speed or else the consequences will catch up with you. (1 mk)

.....  
.....  
.....  
.....

(ii) She likes football as it is more superior than hockey. (1 mk)

.....  
.....

**Fill in the blanks with the appropriate prepositions.**

(i) He was charged .....forging property inheritance document. (1 mk)

(ii) Kamau deals .....groceries. (1 mk)

**Give two meanings from the sentence below.**

“Did you see the girls with a telescope?” (1 mk)

.....  
.....  
.....  
.....  
.....  
.....  
.....  
.....

**Use the correct form of the words in the brackets to fill in the blanks.**

(i) The couple has applied for a divorce over .....differences.  
(reconcile).

(1 mk)

(ii) That matter is highly .....(contest) in a court of law. (1 mk)

# **PREMOCK PAPER 3**

**101/3**

## **English Paper**

### **ANSWER THREE QUESTION ONLY**

Your relatives have organized a farewell party for you in preparation for your departure to the USA for further studies. Write the speech that you will deliver on that day.

#### **2) Drama (compulsory) (20 marks)**

The past always catches up with the present, sometimes with some unintended consequences. Using the play, A Doll's House, explain this statement.

#### **3) Optional set texts**

Either (20 marks)

##### **a) The Short Story**

The grass is always greener on the other side of the fence. Using the stories in the anthology, Memories we Lost and other Stories, discuss this adage. (20 marks)

Or

##### **b) Drama**

Using the play, Inheritance, explain the saying: the mouth that eats the seeds asks what it will plant. (20 marks)

Or

##### **c) The Novel**

The sea shapes the destiny of the Kino family. Discuss this statement using the book The Pearl. (20 marks)

# **KCSE PREMOCK SET 2**

**102/1**

**INSHA**

1. Mhariri wa jarida la shule yako ameamua kuchapisha habari kukuhusu. Andika tawasifu juu ya maisha yako tangu utotoni utakayomkabidhi mhariri huyo.
2. Pendekeza njia za kukabiliana na ongezeko la visa vya utovu wa maadili miongoni mwa vijana katika jamii.
3. Andika kisa kinachooana na methali`mchelea mwana kulia hulia mwenyewe`
4. Andika insha itakayokamilika kwa maneno haya. Mshtakiwa alimwangalia hakimu kwa macho ya huruma, kisha akamwangalia mkewe na wanawe akatamani kuwaomba msamaha lakini hukumu ilikuwa imetolewa.

# KCSE PREMOCK SET 2

## KISWAHILI paper 2

1. **J**ibu maswali yote
2. **M**ajibu yote yaandikwe kwenye nafasi zilizoachwa kwenye karatasi ya maswali

Kwa matumizi ya mtahini

Sehemu	Upeo	Alama
ufahamu	15	
Ufupisho	15	
Matumii ya lugha	0	
Isimu jamii	10	
Jumla	80	

### 1.UFAHAMU: (Alama 15)

**Soma kifungu kifuatacho kisha ujibu maswali.**

Gari lake kuukuu lilikuwa linapambana na barabara yenye mashimo yaliyoshiba na kutapika maji ya mvua ambayo sasa ilikuwa inaanza kupusa. Japo daima alipambana na usukani kunako mashimo haya yaliyotosha kuitwa magenge, alishukuru kwa hali hii. Vipi angeweza kulidhibiti gari lake hili kwenye barabara iliyosakafishwa nayo ikahitimu? Magurudumu haya yaliyong'ara kama upara wa shaibu aliyekula chumvi hadi ikamwogopa yangetii uelekezi wake? Mara ngapi gari hili limetaka kumwasi barabarani? Haya yalikuwa baadhi ya maswali yaliyompitikia akilini. Hakujitakilifu kutaka **kuyapa mji** maana mara ile mawazo yake yalitekwa na kubwagwa katika nchi ya mbali – nchi ambayo sasa aliiona kama sinema akilini mwake.

Alipofika nyumbani aliliegsha gari lake na kufululiza ndani. Siku mbili zilikuwa zimepita akiwa pale kazini. Madaktari kama yeye hawakuwa wengi. Alikuwa miongoni mwa madaktari wenye ujuzi katika hospitali hii ya kitaifa. Wenzake wengi walikuwa wamehamia ughaibuni walikokwenda kutafuta maisha. Mshahara wao wa mkia wa

**FOR MARKING SCHEMES CALL/TEXT/WHATSAPP**

**0705525657/0770195807**



**walimuepublishers@gmail.com**

mbuzi uliwasukuma na kuwatema nje ya nchi yao. Wengi wa waliohamia ng'ambo waliona vigumu kubaki katika ajira ambayo kivuno chake kilishindwa kumvusha mtu hata nusu ya kwanza ya mwezi. Malalamishi ya kulilia ujira wa heshima yaligonga kwenye masikio yaliyotiwa zege. Na kweli wanavyosema, mwenye macho haambiwi tazama. Basi walitazama hapana pale wakaona penye mianya ya matumaini, nao wakaiandama.

Hadi leo hii hamna la mno lililofanyika. Ndiyo maana Daktari Tabibu anarudi nyumbani tangu kuingia kazini hiyo juzi alfajiri. Hafanyi kwa kuwa katosheka, maana pia yeye ana dukuduku. Ana shaka ya mustakabali wake ikiwa mazingira ni haya kumsoza, maana umri nao unazidi kumla. Japo anatia na kutoa, mizani ya hesabu yake imeasi ulinganifu.

Daktari Tabibu ni mfungwa. Ametekwa na kuzuiwa kwenye kipenda na kuchukia mambo. Ni kama mti uliodumaa. Anatamani barabara nzuri za lami. Anatamani mshahara wa kumwezesha kukidhi mahitaji yake na kutimiza majukumu yake ya kimsingi. Jana amesema na rafiki yake aliye ng'ambo kwa simu ambayo sasa imetulia mkabala naye. Ingawa mwenzake huyu alikuwa mchangamfu na kumdokolea hali ya maisha ya kuridhisha kule ugenini kama vile wanataaluma kuenziwa, yapo vilevile yaliyomtia unyonge mwoyoni. Upweke ndio ulimtia **fukuto** kuu. Licha ya hela zote hizo za kupigiwa mfano, watu hawana muda wa kutembeleana na kujuliana hali au hata kukutana tu mkahawani wakashiriki mlo. Eti ni kila mtu na hamsini zake. Halafu ipo changamoto ya hali ya hewa. Baridi ya ng'ambo haifanyi mzaha katika kumtafuna mtu. Ni hali tofauti na ile aliyoizoea.

Daktari Tabibu alizitia kauli za rafiki yake kwenye mizani ya moyo wake. Akawaza ikiwa kweli si bora kulemazwa na mzizimo ugenini badala ya kuishi katika kinamasi cha kuumbuliwa nyumbani. Kisha punde lilimjia wazo la marehemu nyanyake na wengine kama yeye waliofadhili masomo yake kupitia kwa serikali na njia ya kodi. Je si usaliti huu? Vipi aikimbie nchi kabla ya kuihudumia ilhali imemjenga hadi kuwa daktari? Na je wafanyakazi wake wa nyumbani watakwenda wapi? Atawaambiaje kuwa sasa hahitaji huduma zao kwa kuwa anakimbia nchi yake?

Mawazo yake yalikatizwa na simu iliyolia na kumshtua. Alipoitazama aliiona imeng'ara kwa mwangaza ulioweka wazi jina la mpigaji. Alifahamu kuwa leo hii tena dharura nyingine ilikuwa inamwalika hospitalini. Hapo ndipo alipoiinua ile simu tayari kusema na mwenzake upande wa pili.

"Haloo!" sauti nyororo kutoka upande wa pili iliita.

"haloo!"

"Naam! Dharura nyingine tena daktari. Unaombwa kuokoa maisha mengine tena!"

**FOR MARKING SCHEMES CALL/TEXT/WHATSAPP**

**0705525657/0770195807**

“Haya. Ila mwanzo nitahitaji kujimwagia maji,”na pale pale akaikata ile simu.

Daktari Tabibu aliingia hamamuni huku kajifunga taulo kiunoni tayari kuoga. Aliyafungulia maji lakini ule mfereji uligoma kutapika maji. Ulikuwa umekauka kabisa. Dakrari Tabibu aliduwaa pale. Aliufunga ule mfereji kabla ya kuiaga bafu.

1. Eleza sababu **nne** zinazowafanya wataalamu kuhamia nchi za nje. (alama 4)

.....  
.....  
.....  
.....  
.....  
.....

2. “Hakuna masika yasiyokuwa na mbu.” Thibitisha kauli hii kwa kurejelea hali ya waliohamia nga’ambo.

(alama

3).....  
.....  
.....  
.....  
.....  
.....  
.....

3. Fafanua athari **tatu** zinazoikumba nchi ya msimulizi kutokana na uhamiaji ng’ambo wa wataalamu.

(alama

3).....  
.....  
.....  
.....  
.....  
.....

4. Eleza mchango wa teknolojia kwa kurejelea kifungu.

(alama

3).....  
.....  
.....  
.....  
.....  
.....

5. Eleza maana za msamiati ufuatao kulingana na taarifa.

(alama2)

vii. Kuyapa mji

.....  
.....  
.....  
.....

viii. Fukuto

.....  
.....  
.....  
.....

**2 UFUPISHO (Alama 15)**

Soma kifungu kifuatacho kisha ujibu maswali.

Wakenya walipoipata katiba mpya waliidhinisha mfumo wa ugatuzi. Katika mfumo huu, mamlaka ya serikali kuu katika uongozi, usimamizi na utumiaji wa rasilimali za nchi hupunguzwa. Kiasi Fulani cha mamlaka hutwaliwa na maeneo ya ugatuzi. Suala hili halikuzingatiwa katika katiba ya awali ambapo mamlaka yote yalikuwa mikononi mwa serikali kuu. Kutokana na upana na wingi wa maeneo, iliwiwa vigumu serikali kuu kuhakikisha kwamba kulikuwa na usawa wa kimaendeleo katika sehemu nchini.

Kwa mujibu wa katiba mpya, serikali kuu haina budi kuyasaidia maeneo yote ya ugatuzi ili yaweze kujinyanyua kiuchumi na kuboresha hali za maisha za wakazi wake. Vilevile ni jukumu la kila eneo la ugatuzi kuweka mikakati madhubuti ili kuchunguza na kubainisha rasilimali zote katika maeneo husika. Hili litasaidia kufumba rasilimali ambazo zinaweza kuchangia katika ustawishaji wa maeneo haya. Maeneo haya pia yanatakiwa kutafuta mbinu zitakazofanikisha uzalishaji na utumiaji wa rasilimali hizi kwa njia endelevu. Mojawapo ya mbinu hizi ni uongezaji thamani katika rasilimali yoyote inayozalisha kwenye eneo mahususi.

Maeneo mengi ya ugatuzi nchini humu yanategemea kilimo cha ufugaji kama mhimili wa uchumi. Licha ya kuwa nguzo, kilimo hiki hakijawahi kupigiwa darubini vizuri kwa lengo la kukiimarisha ili kiwanufaishe wenyeji kikamilifu. Aghalabu wafugaji wengi huandama mbinu za jadi za ufugaji ambazo haziwahakikishii ongezeko la mapato. Isitoshe, wafugaji hawa wanakabiliwa na tatizo katika soko la mifugo ambapo wengi hupunjwa na matapeli. Pamoja na haya, baadhi ya wakazi huuza mifugo nje ya nchi wakiwa wazimawazima bila kuwazia matokeo ya kitendo hiki. Si ajabu kuwaona ng'ombe, ngamia, mbuzi na kondoo wakipakiwa kwenye malori na kusafirishwa nje ya

**FOR MARKING SCHEMES CALL/TEXT/WHATSAPP**

**0705525657/0770195807**

**walimuepublishers@gmail.com**

nchi. Ukweli ni kwamba jambo hili ni hatari sana, si kwa uchumi wa maeneo husika tu, bali pia kwa Kenya kwa jumla. Hii ni kwa kuwa walionunua mifugo wazimawazima wanaweza kuhiari kutowachinja na badala yake kuwatumia kama mbegu kwani baada ya muda huenda wanaonunua mifugo wakijitosheleza na kukosa kununua mifugo wengine. Hali ikiwa hivyo, maeneo yaliyotegemea soko hili huenda yakalipoteza taratibu, na bila shaka kupoteza natija inayotokana na soko lenyewe.

Ili kudhibitisha hali hii, itakuwa bora ikiwa viwanda vya kuchinja mifugo na kupakia nyama vitajengwa katika maeneo haya ya ugatuzi. Hili litawawezesha wakazi kuuza nyama badala ya kuuza mifugo wazimawazima. Fauka ya hayo maeneo haya yatajikinga dhidi ya kupoteza bidhaa zinazotokana na mifugo. Hizi ni kama vile ngozi, kwato na pembe ambazo bila shaka zina natija kuu. Ngozi kwa mfano, ni bidhaa muhimu sana katikasekta ya utengenezaji wa mavazi na mifuko. Viwanda vinavyotumia ngozi kama malighafi vikijengwa katika maeneo haya, wakazi wake watanufaika si haba. Madhalani, viwanda vya kutengenezea viatu, mishipi, mifuko na nguo vikianzishwa, wawekezaji watalazimika kuanzisha viwanda vingine tegemezi. Kathalika, ni dhahiri kwamba bidhaa zinazotokana na ngozi huhitaji kutiwa nakshi. Kuanzishwa kwa viwanda hivi basi kutazua haja ya kuanzishwa kwa viwanda vingine vya kutengeneza rangi, pamoja na maduka ya kuuza bidhaa zenyewe. Isitoshe, gundi ya kugandisha bidhaa hizi itahitajika, hivyo kusababisha haja ya kuanzishwa kwa kiwanda cha gundi. Matokeo ya shughuli hizi zote ni kuzalishwa kwa nafasi anuwaiza kazi kwa wakazi. Hili litakuwa na matokeo zaidi chanya, hususan kwa vijana. Badala ya kushiriki ulevi na burudani zinazowahatarisha, wataweza kujitafutia riziki katika viwanda hivi.

Juu ya hayo, mfumo wa ugatuzi utayaweza maeneo husika kuongeza thamani, utoaji wa huduma za kijamii na kuitawala kulingana na mahitaji ya maeneo haya. Ni muhimu hata hivyo kuzingatia kwamba kila eneo la ugatuzi lina upekee wake, navyo vipaumbele hutofautianakulingana na maeneo. Kuna yale ambayo yataasisitiza usalama, mengine ujezi na uimirishaji wa miundomusingi kama vile barabara, vituo vya afya na hata taasisi za elimu. La muhimu ni wakazi wa maeneo husika kubainisha ni lipi litatekelezwa kwanza.

Kinga na kinga ndipo moto uwakapo. Kufanikiwa kwa mfumo wa ugatuzi kutategemea juhudi za kila mkazi wa eneo husika. Ni muhimu kila mkazi kujiona kuwa mmiliki wa eneo zima la ugatuzi na kuwajibika katika kuliendeleza kwa hali na mali. Uwajibikaji huu unajumuisha uteuzi wa viongozi wenye muono mzuri na ambao utawawezesha kuyafikia malengo yao ya kimaendeleo. Hakika, mustakabali na uwepo wa eneo la ugatuzi utakuwa zao la maamuzi ya wanaeneo. Vilevile ufanisi wa maeneo ya ugatuzi utakuwa msingi wa ufanisi wa taifa kwa jumla.

**FOR MARKING SCHEMES CALL/TEXT/WHATSAPP**

**0705525657/0770195807**

viii. Fupisha ujumbe wa aya tatu za mwanzo kwa maneno 85-90 (alama 8, 1 mtiririko)

**Matayarisho:**.....  
.....  
.....  
.....  
.....

**Nakala safi:**  
.....  
.....  
.....  
.....

ix. Kwa kutumia maneno 75-80, bainisha masuala ambayo mwandishi anaibua katika aya tatu za mwisho. (alama7, 1 mtiririko)

**Matayarisho:**.....  
.....  
.....  
.....  
.....

**Naala safi:**.....  
.....  
.....  
.....

**3.MATUMIZI YA LUGHA (Alama 40)**

(a) i) Andika tofauti moja kati ya sauti zifuatazo. (al2)

c. |ng'| na |gh|  
.....  
.....  
.....

d. |v| na |f|  
.....  
.....

.....  
.....  
.....  
e. |r| na |l|  
.....  
.....  
.....  
.....

.....  
f. |m| na |n|  
.....  
.....  
.....  
.....

(b) Tunga sentensi mbili kuonyesha matumizi mawili ya kiambishi : O  
(al 2)

.....  
.....  
.....  
(c) Onyesha miundo miwili ya nomino katika ngeli ya U – ZI  
(al2).....  
.....  
.....  
.....

(d) Andika sentensi ifuatayo katika hali ya ukubwa. (al 2)  
Ngoma hizo zao zilibwa na wezi wale.

.....  
.....  
.....  
(e) Tumia 'kwa' katika sentensi kuonyesha :

viii. Sehemu ya kitu kizima (al2)

.....  
.....  
ix. Namna tendo lilivyofanyika  
(al2).....  
.....  
.....

(f) Bainisha maana mbili zinazojitokeza katika sentensi ifuatayo (al2)

Bedui

alimrushiatufe.  
.....  
.....  
.....  
.....  
.....

g) Andika visawe vya maneno yafuatayo (al2)

i) Doa .....

ii) Omba .....

g. Tunga sentensi moja kutofautisha maana ya rithi na ridhi (  
al2).....  
.....  
.....

h. Bainisha silabi katika neno:

Wanyweshavyo (al1)

i. Bainisha kiima na chagizo katika sentensi ifuatayo (al2)  
Mwenyewe alikipenda kwa dhati.  
.....  
.....  
.....

.....  
.....

j. Andika sentensi ifuatayo katika umoja. (al2)

Mkihifadhi nafaka hizo vizuri maeneo haya yatakuwa na vyakula vya kutosha.

.....  
.....  
.....  
.....

k. Andika neno moja lenye mofimu zifuatazo:

nafsi ya kwanza wingi, wakati uliopita, yambwa, mzizi, kauli ya kutendesha ,kiishio kutenda.(al2)

.....  
.....  
.....

l. Changanua sentensi ifuatayo kwa kielelezo cha matawi (al 4)

Lililimwa vizuri sana.

m. Kanusha sentensi ifuatayo.

Wanafunzi waliingia darasani wakatoa vitabu wakaanza kusoma.(al2)

.....  
.....  
.....  
.....  
.....

n. Nomino zifuatazo zimo katika ngeli gani? (al2)

e. Furaha-

.....  
.....  
.....  
.....



f. Nyasi-

.....  
.....  
.....  
.....

o. Tunga sentensi mbili kuonyesha matumizi mawili tofauti ya nukta pacha. (a2)

.....  
.....  
.....

p. Andika sentensi ifuatayo upya ukianzia kwa yambwa tendwa (a2)

Wafugaji waliwakatia ng'ombe wote majani ya mti huo.

.....  
.....  
.....  
.....

q. Ainisha vishazi katika sentensi ifuatayo (a2)

Ingawa mshahara wake si mkubwa anaikimu familia yake.

.....  
.....  
.....

r. Andika kinyume cha sentensi ifuatayo: (a2)

Watoto wameombwa waanike nguo.

.....  
.....  
.....

s. i) Eleza maana ya shadda (a1)

.....  
.....  
.....

ii) Onyesha panapotokea shadda katika neon:

mteremko. (a1)

.....  
.....

**ISIMU JAMII (ALAMA10)**

.....watu wakaunti ya Cheneo wamesahaulika kabisa Ningependa kuelezwa kinaga ubaga kama hawa ni wakenya au la. Order! Order! Mheshimiwa Kega.

6. Hii ni sajili gani? (al2)

.....  
.....  
.....

Eleza sifa nane za sajili iliyotajwa. (al 8)

.....  
.....  
.....  
.....  
.....  
.....  
.....  
.....  
.....  
.....  
.....  
.....  
.....  
.....  
.....  
.....  
.....  
.....  
.....  
.....  
.....

# **KCSE PREMOCK SET 2**

102/3

KISWAHILI

FASIHI YA KISWAHILI

## **1. SEHEMU A: USHAIRI (LAZIMA)**

Eti

Mimi niondoke hapa

Niondoke hapa kwangu

Nimesaki, licha ya risasi

Vitisho na mauaji, siondoki

Mimi

Siondoki

Siondoki siondoki

Niondoke hapa kwangu!

Kwa mateke hata na mikuki

Marungu na bunduki, siondoki

Hapa

Siondoki

Mimi ni Pahame!

Niondoke hapa kwangu!

Fujo na ghasia zikizuka

Na kani ya waporaji, siondoki

Haki

Siondoki

Kwangu siondoki

Niondoke hapa kwangu!

Nawaje; waje wanaokuja

Mabepari wadhalimu, siondoki

Kamwe

Siondoki

Ng'oo hapa kwangu!

Katizame chini mti ule!

Walizikwa babu zangu, siondoki

Sendi

Nende wapi?

**FOR MARKING SCHEMES CALL/TEXT/WHATSAPP**

**0705525657/0770195807**

Si hapa kitovu changu  
Niondoke hapa kwangu  
Wangawa na vijikaratasi  
Si kwamba hapa si kwangu, siondoki

Katu  
Siondoki  
Sihitaji karatasi  
Niondoke hapa kwangu  
Yangu mimi ni ardhi hii  
Wala si makaratasi, siondoki

**Maswali**

- a) Shairi hili ni la aina gani? Kwa nini (alama 2)
- b) Taja masaibu anayopitia mzungumzaji (alama 4)
- c) Eleza toni ya shairi hili (alama 2)
- d) Eleza muundo wa shairi hili (alama 3)
- e) Tambua matumizi ya mbinu ya usambamba (alama 2)
- f) Andika ubeti wa tano kwa lugha nathari (alama 4)
- g) Tambua idhini moja ya mtunzi (alama 1)
- h) Eleza maana ya maneno yafuatayo kama yalivyotumika katika shairi (alama 3)
- (i) Karatasi
- (ii) Nimesaki
- (iii) kitovu

**2SEHEMU B TAMTHILIA YA KIGOGO**

2. Uliona nini kwa huyo zebe wako ? Eti mapenzi!

1. Eleza muktadha wa dondoo. (al. 4)
2. Andika mbinu za lugha zinazojitokeza kwenye dondoo hili (al. 4)
3. Taja hulka za mnenaji unajitokeza katika dondoo. (al. 2)
4. Mwanamke ni kiumbe wa kukandamizwa. Thibitisha kauli hii ukirekjelea tamthilia. (al. 10)

3. wa kurejelea tamthilia ya 'Kigogo ya Pauline Kea, onyesha jinsi ambavyo viongozi wengi katika nchi za kiafrika wamejawa na tamaa. (alama 20)

**SEHEMUC.RIWAYA YA CHOZI LA HERI(ASSUMPTA MATEI)**

4. “ Kwa kweli ni hali ngumu hii”

Weka dondoo katika muktadha wake.

(alama4)

Ni hali gani yamsemewa inayorejelewa kwenye dondoo.

(alama16)

5) Ukabila ni tatizo sugu katika nchi nyingi za Kiafrika. Tetea kauli hii ukilejelea Chozi la Heri ( al. 20)

**Alifa Chokocho na Dumu Kayanda: Tumbo Lisiloshiha na Hadithi nyingine jibu swali la 6 au la 7**

6.Ukirejelea hadithi zifuatazo, eleza jinsi maudhui ya mapenzi na asasi ya ndoa yanavyojitokeza. (alama20)

a) Mapenzi ya kifaurongo

b) Masharti ya kisasa

c) Ndoto ya Mashaka

d) Mtihani wa maisha

Au

**Shibe inatumaliza : Salma Omar Hamad**

7.“Hiyo ni dharau ndugu yangu. Kwa nini kila siku tunakula sisi kwa niaba ya wengine ?”

a) Eleza muktadha wa dondoo hili.

(alama 4)

b)Eleza sifa za msemaji.

(alama 6)

c) Eleza jinsi viongozi wanavyokuwa wabadhirifu.

(alama 10)

**SEHEMU YA E: FASIHI SIMULIZI**

8a) Fafanua mchakato/fomula ya uwasilishaji wa vitendawili.

(alama4)

b) Linganisha naulinganue vitendawili na methali.

(alama10)

c) Toa sababu sita za kudidimia kwa fasihi simulizi.

(alama6)

# **KCSE PREMOCK SET 2**

**443/1**

## **AGRICULTURE**

**SECTION A(30mks)***Attempt all the questions in this section.*

t. Give two conditions under which shifting cultivation can be practiced.

1mk

.....  
.....  
...

u. Differentiate between apiculture and aquaculture. 1mk

.....  
.....  
...

v. Give four government policies which influence Agricultural production...

2mks

.....  
.....  
.....  
.....  
.....

w. State four methods of clearing land. 2mk

.....  
.....

x. State four importance for treating water for domestic use. 2mks

.....  
.....  
.....

y. Give four qualities of a fertile soil. 2mks

.....  
.....  
.....

z. State four types of farm records... 2mks

aa. Give four role of nitrogen in a plant. 2mks

**FOR MARKING SCHEMES CALL/TEXT/WHATSAPP**

**0705525657/0770195807**

.....  
.....  
.....  
bb. State four factors which influence the rooting of a cutting . 2mks

.....  
.....  
.....  
cc. Give four reasons for growing seedling in a nursery . 2mks

.....  
.....  
.....  
dd. Name two methods of pruning . 2mks

.....  
.....  
.....  
ee. Give two causes of blossom end rot in tomatoes. 2mks

.....  
.....  
.....  
ff. Define the following terms as used in Agriculture.

ix. Land sub-division 1mk

.....  
.....  
.....  
x. Land consolidation. 1mk

.....  
.....  
.....  
gg. State four harmful effects of weed. 2mks

.....  
.....  
.....  
hh. State two categories under which pest can be classified or mode of feeding.  
2mks

.....  
.....  
.....  
ii. Name four causes of crop diseases. 2mks

**SECTION B:20mks:Attempt all questions in this section.**

**FOR MARKING SCHEMES CALL/TEXT/WHATSAPP**

**0705525657/0770195807**

jj. Below is a diagram of one of the tertiary practices that are carried out in land preparation. Study it and answer the questions below

(g) Identify the tertiary practice shown above. 1mk

(h) Give four reasons for carrying out the above practice. (2mks)

(i) Apart from the above practice name any other two tertiary practices that are carried out in a farm (1mk)

kk. The table below is one of the record that is kept by livestock farmer in the farm

No		colour	s: sire		
vice	vice	vice	vice	ks	service
f service	f service	f service	f service		
of service	of service	of service	of service		
	o Breed	o Breed	o Breed		
	Result.....				
ted date of calving					
.....					
t of calf at birth					
the calf					
calf					

7. Identify the type of record. 1mk

8. Fill in the blank spaces 3mks



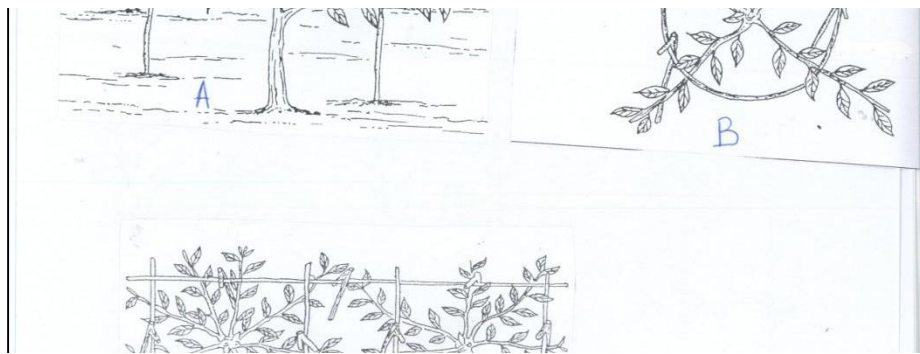
- A.....
- B.....
- C.....

ll. A farmer was advised to apply 150 kg of CAN/ha, while top dressing the maize crop. CAN contains 21% N. Calculate the amount of Nitrogen applied per ha.

4mks

.....  
.....  
...

mm. Below are various pegging methods of tea. Study them and answer the questions that follows.



3. Identify the pegging methods shown above.

$1\frac{1}{2}$  mks

- A-
- B--
- C

4. Apart from the above method .Name any other method which is used to bring tea to bearing. 1mk

.....

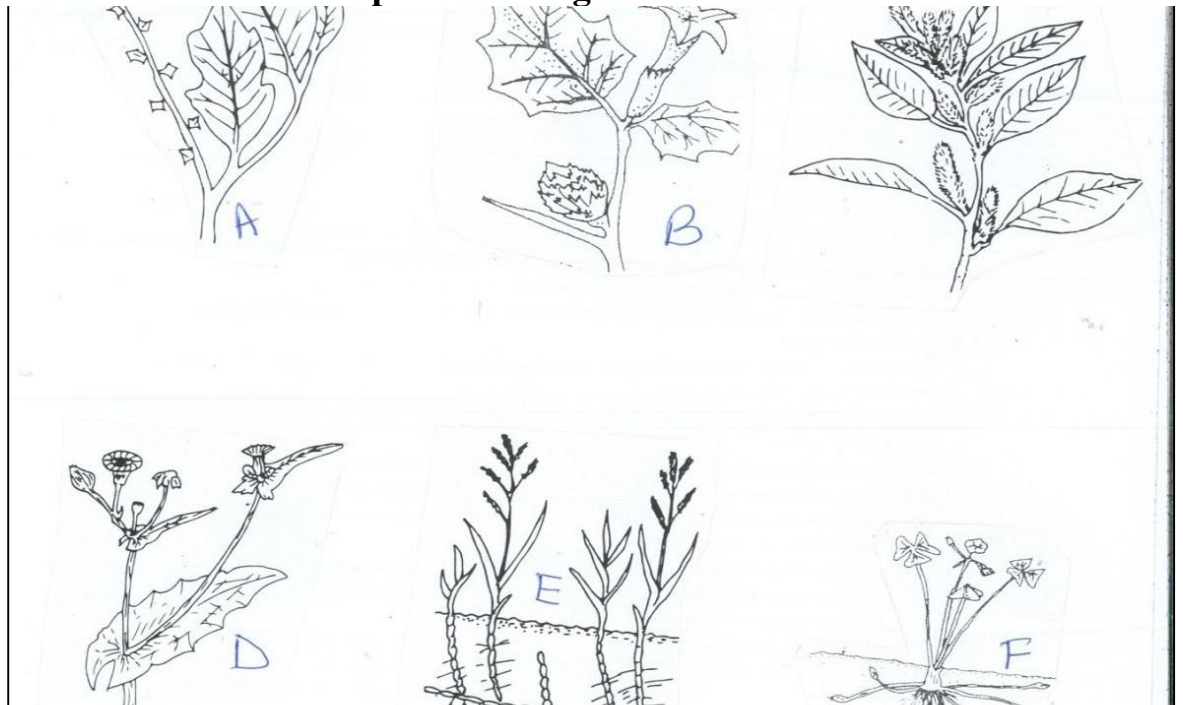
5. Give one advantage of using the method given in b above. 1mk

.....

6. State one reason why the method in (b) above is not commonly used. ½mk

.....

nn. Below are some of the common weeds in Kenya. Study them and answer the questions which follow.



6. Identify the weeds A,B,C D.

2MKS

7. What contributes to the competitive ability of weed C

1mk

8. Why is it difficult to control weed E and weed F.

1mk

**SECTION C(Attempt two questions in this section.(40mks)**

oo. (a)Describe the advantages of organic farming in Kenya.

5mks

(b)Explain the overall effects of HIV/AIDS and ill health on Agricultural production.5mks

(c)Describe five reasons of carrying out minimum tillage in agriculture production.5mks

(d)Describe the uses of water in a farm .

5mks

.....  
.....  
.....  
pp. (a) Explain five ways of maintaining soil fertility. 5mks

.....  
.....  
.....  
(b) Explain the factors which affects the spacing of any crop. 5mks

.....  
.....  
.....  
(c) Describe five management practices carried out in a nursery bed. 5mks

.....  
.....  
.....  
(d) Describe the field management practices in tomato production.. 5mks

.....  
.....  
.....  
qq. (a) Describe the effects of land consolidation. 6mks

.....  
.....  
.....  
(b) Explain cultural methods of controlling pests. 14mks

# **KCSE PREMOCK SET 2**

443/2

AGRICULTURE

PAPER 2

## **Section A (30MKS)**

1. Name **four** methods of dehorning in cattle

(2mks)

.....  
.....

2. State the function of the following parts of a poultry digestive system(1mk)

Crop-

.....  
.....

Gizzard-

.....  
.....

3. State **two** functions of protein in animal nutrition

(1mk)

**FOR MARKING SCHEMES CALL/TEXT/WHATSAPP**

**0705525657/0770195807**

4. Name four bacterial diseases 2mks

.....  
.....

5. Name two meat breeds of goat ... 1mks

.....  
.....  
.....  
.....

6. Give four characteristics of a large white breed of pig (2mk)

.....  
.....

7. State **four** ways of restraining cattle during routine management (2mks)

.....  
.....

8. What is meant by the following terms as used in livestock health?

(a) Incubation period

(1mk)

.....  
.....

(b) Mortality rate

(1mk)

9. Define the following terms as used in livestock rearing.....2mks

**FOR MARKING SCHEMES CALL/TEXT/WHATSAPP**

**0705525657/0770195807**

(a)pullet.....  
.....

b.cockrel.....  
.....

c.piglet.....  
.....

c.sow.....  
.....

10. What is creep feeding? (1mk)  
.....  
.....

11.State two meat breeds of sheep 2mks

12. Give microbial activities that takes place in the rumen..2mks

13. (a) State 2 functions of cobalt in animal's body 1MKS

(b)Name two classes of feedstuff 1mks

14. Give 4 mechanical method of tick control 2mks

15. State structural requirements of a pig house 2mks

16. State 4 disadvantages of using spray race over cattle dip 2mks

17. Give the uses of the following farm tools and equipments 2mks

i) strip cup

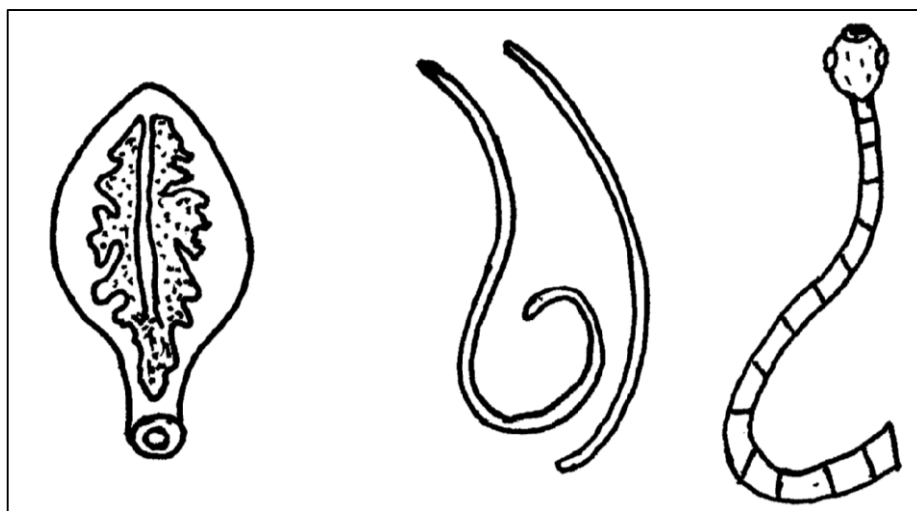
ii) milk strainer

Iii) Hacksaw

iv) Centre punch

**Section B 20mks**

18. Diagram G,H and J illustrates some livestock parasites



G

H

J

(a) Identify parasites G,H and J

(3 mk

**G**.....

**H**.....

**J**.....

(b) Name the parts of the host body where parasites **G** and **J** are found  
(1mk)

.....

(c) Name the intermediate host of parasites **G** and **J**  
(2mk)

**G**.....

.....

**J**.....

.....

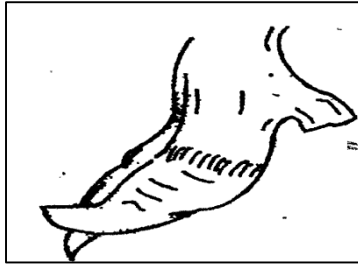
(d) Outline **four** symptoms of attack in livestock by parasite **J**  
(2mks)

.....

.....

19. The diagram below illustrates a hoof of a sheep. Study it carefully and answer the questions that follow





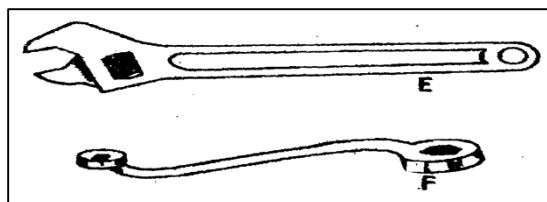
(a) Name the routine management practice that should be carried out on the hoof illustrated above(1mk)

.....  
.....

(b) State **two** reasons for carrying out the management practice in (a) above (2mks)

.....

20. Study the diagrams of workshop tools shown below



(a) Identify the tools labeled **E** and **F**  
(2mk)

**E**.....

F.....

(b) What functional advantage does tool **E** have over tool **F**?

(1mk)

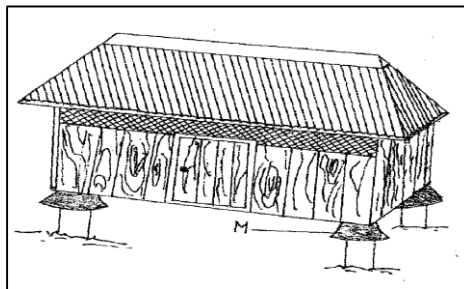
.....

.....

(c) Below is a diagram of a farm structure for storing grains. Study it carefully and answer the question that follows

(i) Identify the farm structure illustrated above

( 1mk)



.....

.....

(ii) State the function of the part labeled **M**

( 1mk)

.....

(iii) State **two** maintenance practices that should be carried out on the farm structure illustrated above in readiness for grain storage 2mks

21. Give four functions of a worker bee 2mks

**Section c (40mks)**

**Attempt any two questions**

22(a) i) Describe seven signs of ill-health in livestock 7mks

.....  
.....

(ii) Outline five uses of a crush in livestock rearing 5mks

.....  
.....

(b) (i) Name the causal organism of coccidiosis in poultry.  
(1mk)

.....  
.....

(ii) Apart from poultry name two other animals affected by the disease above. (2mks)

(iii) Give five symptoms of the disease in poultry.  
(5mks)

.....  
.....  
.....

23. (a) Describe the procedure of processing honey wax  
(8mks)

.....  
.....  
.....

(b) Outline FOUR harmful effects of lice in livestock ( 4MKS )

.....  
.....

(c) State five advantages of the top bar beehive (5mks)

.....  
.....  
.....

d). Give three signs of heat in pigs (3mks)

24. A) Explain six advantages of artificial insemination (A.I) in livestock breeding. (6mks)

(b) Give 5 categories of farm tools and equipment (5mks)

.....

c)outline five characteristics corriedale breed of sheep (5mks)

.....  
.....

d)discuss 4 practices carried out on fish before preservations.

4mks

.....  
.....

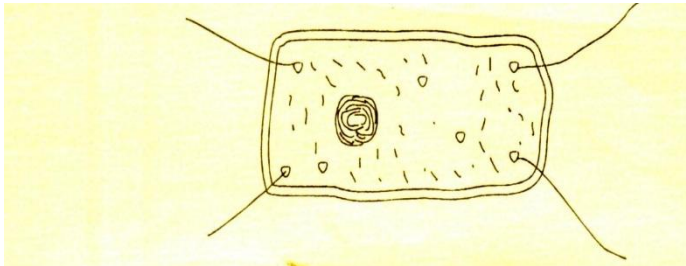
# KCSE PREMOCK SET 2

231/1

**BIOLOGY**

**Paper 1**

1. The diagram below represent a bacterium cell



1. (a) Name the kingdom to which the bacterium belong  
(2 marks)

.....  
.....

(b) State **two** distinguishing characteristics of the members of the kingdom named above. (2marks)

.....  
.....  
.....  
.....

2. a) Name **one** element found in proteins but not in carbohydrates.  
(1 mark)

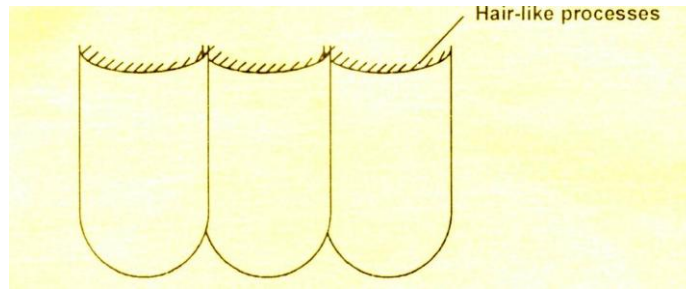
.....  
.....  
.....

b) State **two** functional roles of proteins in the body.  
(2marks)

3. The diagram below shows a type of epithelial tissue.

**FOR MARKING SCHEMES CALL/TEXT/WHATSAPP**

**0705525657/0770195807**



a) State the possible function of the hair-like processes on the tissue  
(1mark)

.....  
.....  
.....  
.....

b) Name **two** mammalian organs where this type of epithelium is found.  
(2marks)

.....  
.....

4. State the major role of the following features of the mammalian vertebra.

i. Odontoid process  
(1 mark)

.....  
.....

ii. Neural canal  
(1 mark)

.....  
.....

Vertebrarterial canal  
(1 mark)

.....  
.....

5. a) In which phase of photosynthesis are carbohydrates formed?

(1 mark)

.....

b) Explain the biological disadvantage of growing some aesthetic plants in the living rooms.(2marks)

.....

.....

6. A certain organ K was surgically removed from a rat. It was later found that there was a drastic increase in glucose level in the blood. When substance Q was injected into the animal the glucose in the blood went back normal. Identify

i) Organ K

(1 mark)

.....

.....

ii) Substance Q

(1 mark)

.....

.....

7. When the tip of a plant is cut, lateral branches develop.

a) What name is given to this phenomenon?

(1 mark)

.....

b) Which plant hormone is responsible for the phenomenon above

(1 mark)

8. The table below represents certain aspect of the circulatory system in certain animals.

Fill in the missing spaces.

(3 marks)

Heart	No. of atrium	No. of ventricle	Type of circulation
A	2	2	
B	2	11	
C	1	1	

9. Name the tissue that carry out the following function in mammals.

**FOR MARKING SCHEMES CALL/TEXT/WHATSAPP**

**0705525657/0770195807**

a. Blinds and supports various organs in the body

(1 mark)

.....  
.....

b. Transport oxygen throughout the body

(1 mark)

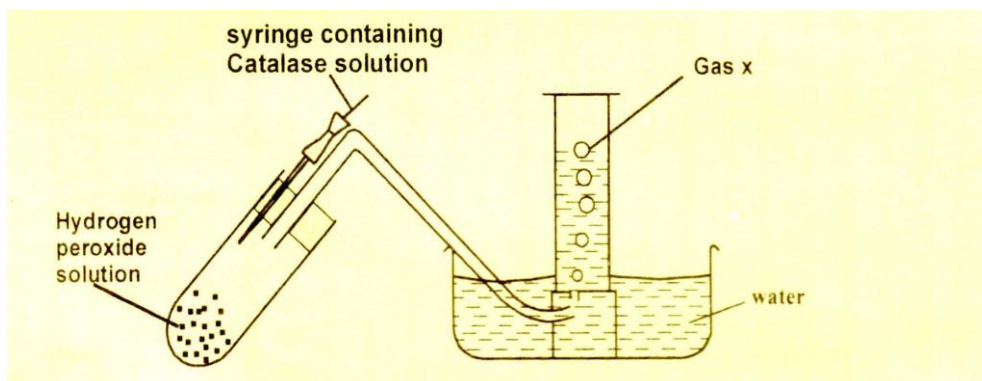
.....  
.....

c. Contract and relax to bring about movement

(1 mark)

.....  
.....

10. The apparatus shown below was set up by form two students in a certain school.



a) Name the gas X

(1 mark)

.....  
.....

b) Write a word equation for the reaction which produces the gas.

(1 mark)

.....  
.....

c) Where in the body does this type of reaction occur

(1 mark)

**FOR MARKING SCHEMES CALL/TEXT/WHATSAPP**

**0705525657/0770195807**



.....  
.....  
11. a) ..... is the basic unit of the DNA

(1 mark)

b) Explain why it is genetically unwise for sisters to marry brothers or father to marry their daughter.

(3 marks)

.....  
.....  
12. The diameter of the field of view of a microscope was found to be 6mm. there were 8 cells across the diameter of the field of view.

a. Calculate the size of one cell in micrometer.

(2 marks)

.....  
.....  
b. State **two** differences between an electron microscope and a light microscope.

(2 marks)

.....  
.....  
13. a) Name **two** components of the enamel of teeth.

(2 marks)

.....  
.....  
b) Name the diseases of the teeth characterized by

i. Formation of cavities in the teeth

(1 mark)

.....  
.....  
ii. Gums become soft and flabby and bleeding of the gums occur.

(1 mark)

.....  
.....  
14. a) Name **three** defects of the eye.

(3 marks)

.....  
.....

b) Which structure in the ear detect:

i. Change in posture

(1 mark)

ii. Sound waves.

(1 mark)

.....  
.....

15. What is the importance of a pooter to an ecologist?

(1 mark)

.....  
.....

16. The red blood cells lack mitochondria

a) How is this of advantage to red blood cells?

(1 mark)

.....  
.....

b) Apart from the reason stated above, give one other reason.

(1 mark)

.....  
.....  
.....  
.....

c) State **two** other characteristics of the red blood cell.

(2 marks)

.....  
.....

17. If a solution 0.9% salt solution is isotonic to a certain type of animal cell, explain what happens when the animal cell is placed in a solution of 1.2 % salt solution.

(3 marks)

.....  
.....

18. Two glucose molecules combine to form the disaccharide sucrose. The molecular formula of glucose is  $C_6H_{12}O_6$  while a single sucrose molecule has the molecular  $C_{12}H_{22}O_{11}$ . Account for the observation.

(3marks)

.....  
.....

19. How is the dark stage of photosynthesis dependent to light stage.

(2 marks)

.....  
.....

20. A horse has 64 chromosomes in its somatic cells while a donkey had 62. A mule is produced when a horse mates with a donkey. However a mule is sterile.

a) Work out the number of chromosomes in a mule. Show your working.

(2 marks)

.....  
.....

b) Why is the mule sterile?

(1 mark)

.....  
.....

21. Name the **three** processes that takes place in the liver to bring about difference in composition of blood in hepatic portal vein and hepatic vein.

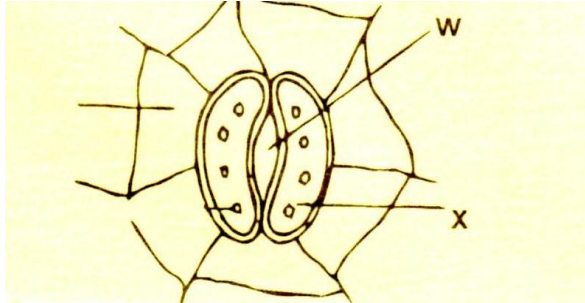
(3 marks)

**FOR MARKING SCHEMES CALL/TEXT/WHATSAPP**

**0705525657/0770195807**

- .....  
.....  
22. Explain why the rate of transpiration is reduced when humidity is high.  
(1 mark)

.....T  
The diagram below shows part of the plant tissue.



- a) Name the cell labeled X and part labeled W.  
(2 marks)

(2 marks)

X .....

W .....

- b) State **two** adaptations of cell labeled X to its function.  
(2 marks)

(2 marks)

.....  
.....

23. The diagram below represents part of a mammalian respiratory system.



- a) Name the structure  
(1 mark)

(1 mark)

.....  
.....

- b) State **two** observable ways in which the structure is suited to its function  
(1 mark)

(1 mark)

24. a) Define Eutrophication

(1 mark)

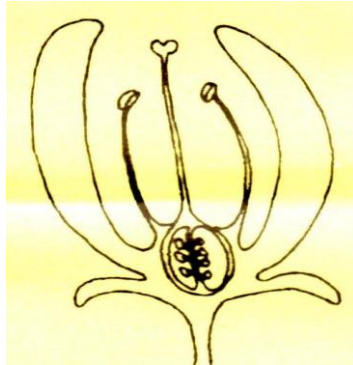
.....

b) List **two** effects of Eutrophication in aquatic ecosystem

(2 marks)

.....

Below is a simplified diagram of a flower



i. Suggest its agent of pollination

(1 mark)

.....

ii. Name the type of ovary shown above

(1 mark)

iii. Explain the observable mechanism that will hinder self-pollination and fertilization in the above flower

(1 mark)

.....

.....

25. State **two** functions of muscles found in the reproductive system in females

(2 marks)

# KCSE PREMOCK SET 2

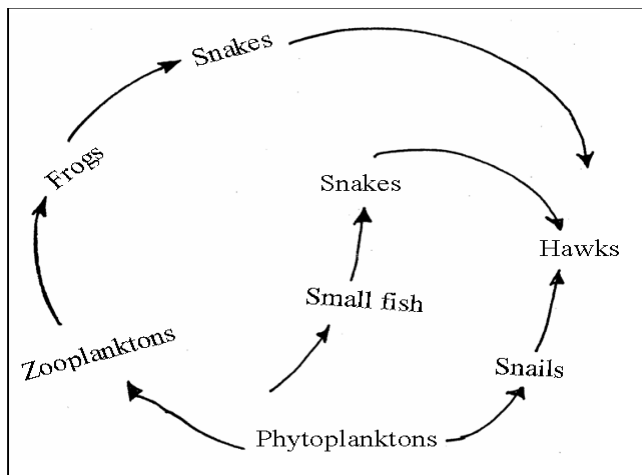
231/2

**BIOLOGY**

**Paper 2**

**SECTION A**

1. The diagram below represents a feeding relationship in an ecosystem.



(a) Name the type of ecosystem represented by the above food web.

(1mk)

.....

(b) Name the organisms in the food web that

(i) Are producers

(1mk)

.....

(ii) Occupies the highest trophic level

(1

.....

c) (i) Write a food chain that ends with the hawk as quaternary consumer.

(1mk)

**FOR MARKING SCHEMES CALL/TEXT/WHATSAPP**

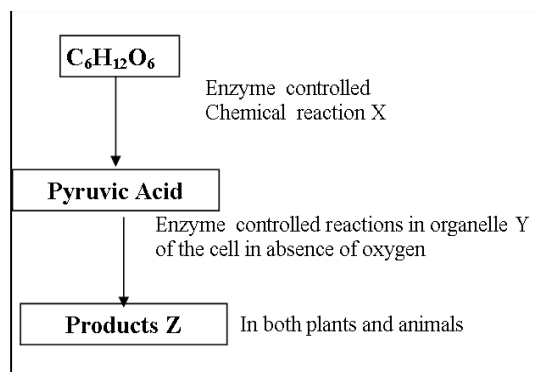
**0705525657/0770195807**

ii) State **two** short term effects on the above ecosystem if all the small fish were killed .

d) How does oil spills lead to death of fish.  
(1mk)

e) Name **one** other cause of water pollution apart from oil spills. (1mk)

2. Study the flow chart below of a process that takes place in both plants and animals.



a) Name the above process.  
(1mk)

b) (i) In the above process name the chemical reaction represented by X.  
(1mk)

(ii) Name the part of the cell where the enzyme controlled reactions in b (i) above takes place. (1mk)

(c) Name the products Z in

i) Plants

(1mk)

.....

ii) Animals

(1mk)

.....

(d) What would be the fate of pyruvic acid if oxygen supply is availed in the mitochondria of an animal cell

(2mks)

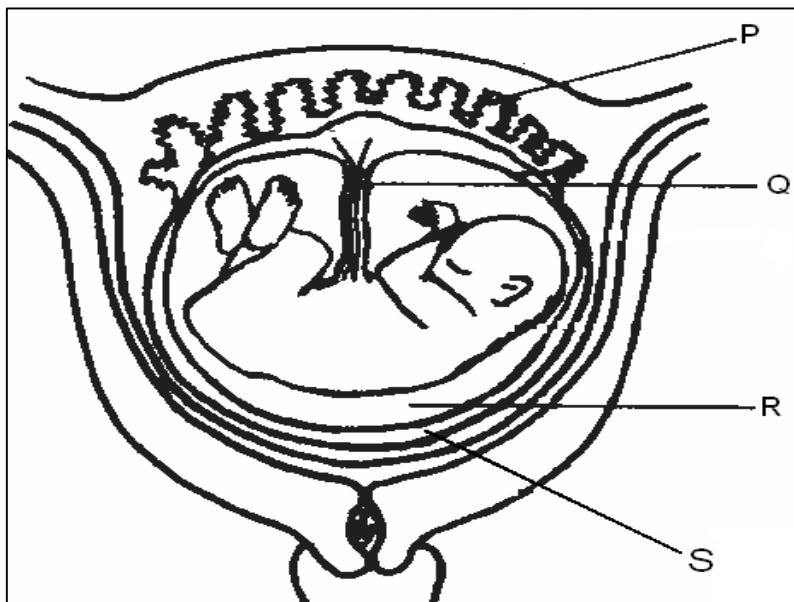
.....

e) What is meant by the term oxygen debt?

(1mk)

.....T

he diagram below represents human foetus in a uterus.



(a) Name the part labeled S.

(1 mk)

.....

(b) (i) Name the types of blood vessels found in the structure labeled Q.

(2mks)

**FOR MARKING SCHEMES CALL/TEXT/WHATSAPP**

**0705525657/0770195807**



.....  
.....  
(ii) State the differences in composition of blood in the vessels named in (b)(i) above  
(2mks)

.....  
.....  
(c) Name two features that enable the structure labeled P carry out its function. ( 2mks)

.....  
.....  
(d) State the role of the part labeled R. (1mk)

.....  
.....  
9. The table below shows the concentration of sodium and iodine ions in pond water and in the cell sap of water lettuce plant.

	Sodium ion concentration	Iodine ion concentration
Pond water	180	0.4
Cell sap	90	500

a. Giving reasons, name the process through which each of the ions is taken up by the plant.

7. Sodium ion. (2mks)

.....  
.....

8. Iodine ion. (2 mks)

(b) The lettuce plant was then treated with a chemical substance that inhibits the synthesis of ATP. Giving reasons, state which ion uptake was affected by the treatment. (2 mks)

.....  
.....

(c) Explain why fresh water fish cannot survive in marine habitat. (2 mks)

.....  
.....  
5. The equation below shows a chemical reaction that takes place in green plants under certain conditions



(a) Name the;

(2mks)

(i) Substance represented by X

.....  
(ii) Process represented by the equation

.....  
.....  
(b) Other than the reactants, state two conditions necessary for this reaction to occur.

(2mks)

c) Name three types of cells in which the process occurs

(3mks)

.....  
.....  
d) State one factor that affects the process named in a)(ii) above

(1mark)

**SECTION B**

6. A group of students carried out a study of the population growth of flour weevils. They put 16 grams and 64 grams of maize flour into two equal boxes K and L respectively. They then introduced equal numbers of weevils into the boxes. The boxes were kept under similar

**FOR MARKING SCHEMES CALL/TEXT/WHATSAPP**

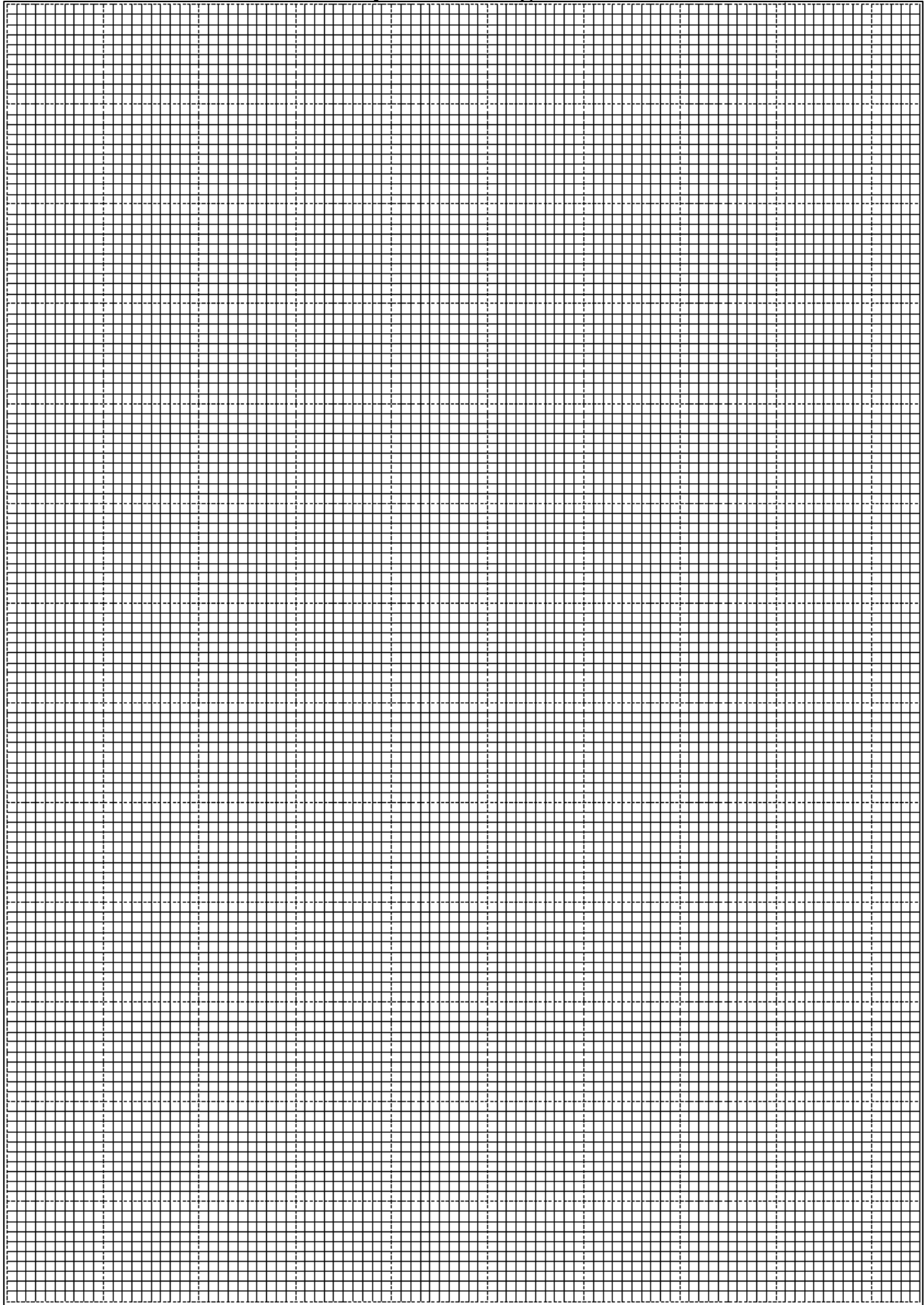
**0705525657/0770195807**

environmental conditions. The weevils were counted at intervals and the results recorded in the table below.

No. of days after introduction of weevils	Approximate No. of weevils present	
	K	L
0	20	20
5	20	20
40	200	300
60	550	800
80	560	1300
100	650	1750
120	640	1750
135	650	1740
150	645	1748

(a) Using a suitable scale, draw two graphs on the same axes from the results in the table. Plot approximate number of weevils present on the Y – axis.

(8mks)



(b) What were the approximate numbers of weevils present in the two boxes on the 70<sup>th</sup> day. (2mks)

Number in

K.....

Number in

L.....

(c) (i) On the what day was the population of weevils in K 580.

.....

(ii) Between which days was the population difference greatest.

(1mk)

.....

(d) Account for the shape of graph L between day 5 and day 100.

.....

(e) State factors that would make the human species assume the graph curve between

day 100 and day 150.

.....

7. Describe how the human male reproductive system is adapted to perform its function.

(20mks)

8. A) Define transpiration

b) Give THREE types transpiration

c) Describe EIGHT factors that affect the rate of transpiration

.....

# **KCSE PREMOCK SET 2**

**BUSINESS STUDIES 565/1**

**TIME: 2 HOURS**

**Answer all the questions in the spaces provided.**

a. State four external factors that may adversely affect the efficient operations of a business enterprise.4 mks

- a. ....
- b. ....
- c. ....
- d. ....

b. Likoni traders a newly established firm has constructed an office block. Outline four factors that will be considered when deciding on the type of office layout.4mks

- a. ....
- b. ....
- c. ....
- d. ....

c. State the document used for the following function.4mks

(j) To inform a buyer that his or her account has reduced by a certain amount

.....

(k) To request a supplier to provide a particular service to a customer

(l) To determine the credit worthiness of a customer

**FOR MARKING SCHEMES CALL/TEXT/WHATSAPP**

**0705525657/0770195807**

.....

(m) To show that transport has been hired to deliver specified goods to a particular buyer

.....

d. Classify each of the following accounts in the table below as either real, nominal, or personal 4mks

Account	Classification
Assets	
Capital income	
Provision	
Amount allowed	

e. The demand for oranges doubled even if the price of the oranges remained the same over the same period. State four factors that may account for this. 4mks

iii. ....

iv. ....

v. ....

vi. ....

f. Joshua insured his vehicle against theft, later the vehicle was stolen in a parking bay. Outline the procedure he would follow when making insurance claim for his vehicle. 5mks

.....  
.....

g. Highlight four benefits of transporting oil from Turkana to Mombasa by pipeline.

a. ....

b. ....

c. ....

d. ....

h. List four drawbacks of verbal communication in an organization. 4mks

iii. ....

iv. ....

v. ....

vi. ....

i. Identify four ways through which the government encourages establishment of industries throughout the country.4 mks

a. ....

b. ....

c. ....

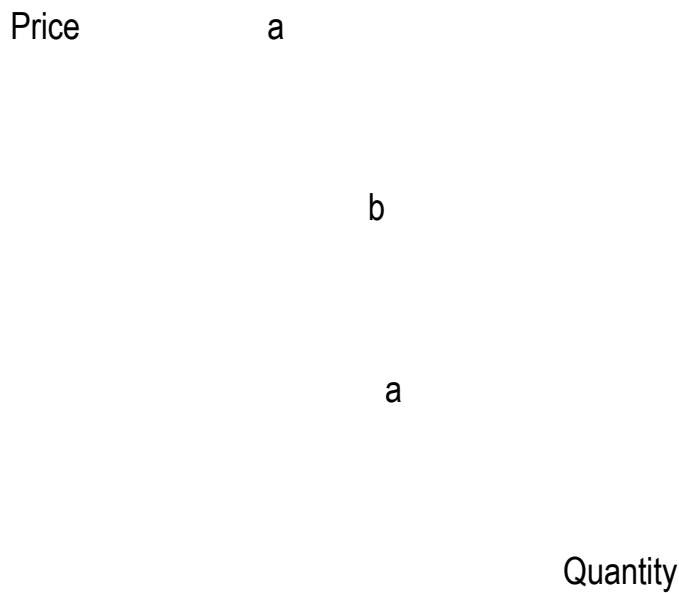
d. ....

j. List four factors that adversely affect the functioning of a warehouse. 4mks



- 9. ....
- 10. ....
- 11. ....
- 12. ....

k. Use the diagram below to answer the questions that follow. 3mks



- c. Identify the market structure to which the diagram above belongs.....
- d. Curve labeled a-a.....  
.....
- e. Name the part labeled b.....
- l. Outline four factors that hinder entrepreneurship in Kenya. 4mks
- c. ....
- d. ....

e. ....

f. ....

m. Outline four benefits that Kamau would get for being a member of SACCO.4mks

9. ....

10. ....

11. ....

12. ....

n. Kenya is one of the countries experiencing unemployment problems. Identify four causes of the problem.4mks

x. ....

xi. ....

xii. ....

xiii. ....

o. Outline four characteristics of direct production4mks

xi. ....

xii. ....

xiii. ....

xiv. ....

p. Highlight four reasons why a firm may choose to remain small.4mks

- c. ....
- d. ....
- e. ....
- f. ....

q. Outline four reasons why ethical practices are necessary in product promotion.4mks

- 10. ....
- 11. ....
- 12. ....
- 13. ....

r. Highlight four factors that may lead to low level of national income.4mks

- a. ....
- b. ....
- c. ....
- d. ....

s. Outline four reasons that make it difficult to satisfy all our wants.4mks

- a. ....
- b. ....
- c. ....
- d. ....

t. The following information has been extracted from the books of Akili as at 30<sup>th</sup> june 2001

Land and building	235,000
Machinery	142,000
Motor vehicle	198,000
Debtors	25,000
Capital	330,000
Creditors	50,000
Bank overdraft	200,000
Net profit for the year	62,000

From the information above, calculate Akili's drawings for the year.4mks

u. Nyundo had the following assets and liabilities on 1<sup>st</sup> march 2006.

Capital	120,000
Machinery	80,000
Creditors	10,000
Debtors	20,000
Stock in trade	25,000
Cash at bank	5,000

On 2<sup>nd</sup> march he had the following transactions;

Purchased goods for 15,000 on credit.

Received a cheque of 10,000 from a debtor.

Sold machinery for 90,000 in cash.

Prepare his balance sheet on 2<sup>nd</sup> march, 2006.4mks

v. Mention four purposes of preparing a trial balance.4mks

1. ....
2. ....
3. ....
4. ....

w. Outline four factors that may cause the capital of an ongoing business to change. 4mks

- g. ....
- h. ....
- i. ....
- j. ....

x. Yogen had the following transactions with a creditor, Sulem, 2017

June 1 Balance from May 14,000

2 Bought stock from Sulem on credit Kshs. 80,000

4 Returned faulty goods to Sulem Kshs. 2,000

7 Paid Sulem the debt by cash less 2% discount.

Prepare Sulem's account as it would appear in the books of Yogen. 4mks

y. In the two column cash book given below, enter the missing figures.4mks

**Waria Traders**

**Two Column Cash Book**

**For The Month of July, 2008**

ay 1	b/d			ay 1	b/d		
					ses		
					s		
	ent						

# KCSE PREMOCK SET 2

## 565/2 BUSINESS STUDIES

1 a) Explain five features that differentiate a public company from a public corporation.(10marks)

b) Jambo Tena enterprises had the following balances in the cash book on 1<sup>st</sup> November,

- 2018. Cash at hand shs. 10,000 and bank shs. 150,000
- 13. Bought buildings paying by cheque shs. 50,000
- 14. Drew shs. 4,000 from Bank for office use.
- 15. Took cash shs. 1,000 for his personal use
- 16. Credit sales to Jema traders shs. 5,000
- 17. Took all the cash to the bank leaving a balance of only shs. 100

**Required:** prepare duly balanced a two column cash book.

1. a) Explain **five** emerging issues in office management. (10marks)
- b) Explain five circumstances under which a partnership may be dissolved (10mks )
  - (a) a) Explain five circumstances under which a manufacturer would prefer to sell his products direct to consumers instead of selling through middlemen.(10 marks)
  - b) Explain five factors to consider when choosing a method of promoting products.(10 marks)
- (b) (a) In most secondary schools in Kenya, members of staff are accommodated in one large room. Explain **five** disadvantages associated with this kind of arrangement.(10mks)
- (b) Explain Five benefits of warehousing to consumers (10 marks)
- (c) a) Explain five uses of National Income Statistics (10mks)
  - b) i) Explain four insurance policies that the owner of a supermarket may find useful for the business. 8mks
  - ii) A farmer's house valued at Ksh. 1,200,000 was insured against fire for ksh. 900,000. Fire occurred and damaged the house causing a loss of ksh. 500,000. Determine the value of compensation due to the farmer. (2mks)
- (d) a) The accounts of Maneno Traders showed the following balances as at 31<sup>st</sup> December 20-2. Required: Balance off the accounts and extract a trial balance (10 Mks).

### Land and Buildings Account

Dr

Cr

	ulars		nt		ulars		nt
			00				

**FOR MARKING SCHEMES CALL/TEXT/WHATSAPP**

**0705525657/0770195807**

--	--	--	--	--	--	--	--

**Motor Cars Account**

**Dr**

**Cr**

	ulars		nt		ulars		nt
			00				

**Cash Account**

**Dr**

**Cr**

	ulars		nt		ulars		nt
			30,000		ases		0
			5,000		ors		
	ts		3,000				

**Creditors Account**

**Dr**

**Cr**

	ulars		nt		ulars		nt



--	--	--	--	--	--	--	--

**Capital Account**

**Dr**

**Cr**

	ulars		nt		ulars		nt
							00

**Sales Account**

**Dr**

	ulars		nt		ulars		nt

b) Highlight **five** factors that may lead to rapid increase in population. (10mks)

# **KCSE PREMOCK SET 2**

## **CHEMISTRY**

### **PAPER 1**

a. a) What role do the following parts play during fractional distillation of water and ethanol?

i. The fractionating column.

(1mark)

ii. The glass beads

(1mark)

b) State one application of fractional distillation.

(1mark)

b. Study the table below and answer the questions that follow:-

Ion	Electron Arrangement
$R^{2+}$	2.8.8
$S^{2-}$	2.8

a. Write the electron arrangement of each atom.

R .....

(½ mark)

S .....

(½ mark)

b. Write the formula of the oxide of R and Chloride of S

Oxide of R

(1mark)

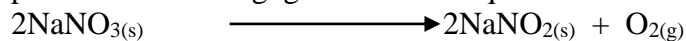
Chloride of S

(1mark)

**FOR MARKING SCHEMES CALL/TEXT/WHATSAPP**

**0705525657/0770195807**

- c. When 5.35g of Sodium Nitrate were heated in an open crucible, the mass of oxygen produced was 0.83g. given that the equation for the reaction is:-

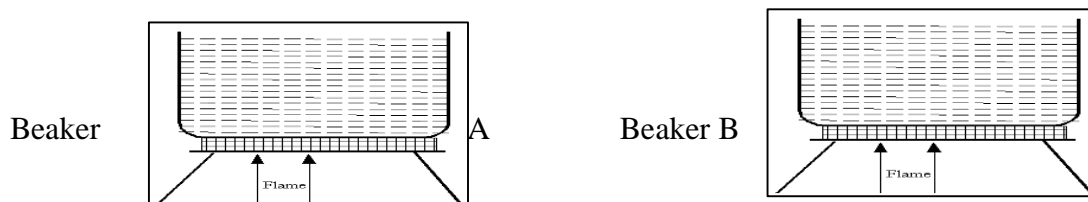


Calculate the percentage of Sodium Nitrate that was converted to sodium nitrite.

(3marks)

(Na=23, O=16, N = 14)

- d. Equal volumes of water put in  $100\text{cm}^3$  glass beaker and heated for 5 minutes using Bunsen flames. It was observed that water in beaker A registered higher temperature than beaker B.



1. Name the kind of flame used in beaker; A  
(1mark)
  2. State the condition under which flame that heated B was produced.  
(1mark)
- e. Silver chloride can be prepared in the laboratory by the reaction between potassium chloride and silver nitrate.
- a. What name is given to this method of reaction?  
(1mark)
  - b. Write an ionic equation for the reaction that occurs.  
(1mark)
- f. During heating of hydrated copper (II) sulphate crystals, the following readings were obtained:-  
Mass of evaporating dish = 300g  
Mass of evaporating dish + hydrated salt = 305g

**FOR MARKING SCHEMES CALL/TEXT/WHATSAPP**

**0705525657/0770195807**

Mass of evaporating dish + dehydrated salt = 303.2g

Calculate the empirical formula of hydrated copper (II) sulphate.

(Cu = 64.5, S = 32.0, O = 16.0, H = 1)

(3marks)

- g. A seed catalogue that the preferred soil pH range for the growth of different varieties of a crop are as shown in the table.

Type of plant	Preferred pH
A	4.5 – 6.0
B	5.0 – 7.5
C	5.5 – 6.5
D	6.0 – 6.5

- a. Which seed variety will grow over the largest pH range.  
(1mark)
- b. What soil pH range will a gardener be able to grow all these crops  
(1mark)
- c. The soil in a garden has a pH of 4.5, which substance can be added to the soil in order to grow plant type D? explain  
(2marks)
- h. Using dot (.) and cross (x) diagram, show bonding in the compound Ammonium ion ( $\text{NH}_4^+$ ).  
(N = 14, H = 1)  
(2marks)
- i.
- a. State Graham's Law of diffusion.  
(1mark)

b)  $200\text{cm}^3$  of oxygen gas take 250seconds to diffuse through a porous plug. Under similar conditions, an equal volume of an unknown gas take 277 seconds to diffuse through the same porous plug. Calculate the relative molecular mass of the unknown gas.

(3marks)

c) Give two products formed when a candle burns.

(1mark)

d) From the above products; which elements make up a candle?

(1mark)

j. Explain how the following substances conduct an electric current.

a. Magnesium metal.

(1mark)

b. Molten magnesium chloride

(1mark)

k. The molar mass of a gaseous compound  $\text{XO}_2$  is  $64\text{ gmol}^{-1}$ . A sample of this gas occupied  $11.2\text{dm}^3$  at s.t.p.molar gas volume =  $22.4\text{dm}^3$ .find

a. The number of moles of this gas.

(2marks)

b. The amount in grams that occupied the above volume.

(2marks)

l. Classify the following processes as either chemical or physical.

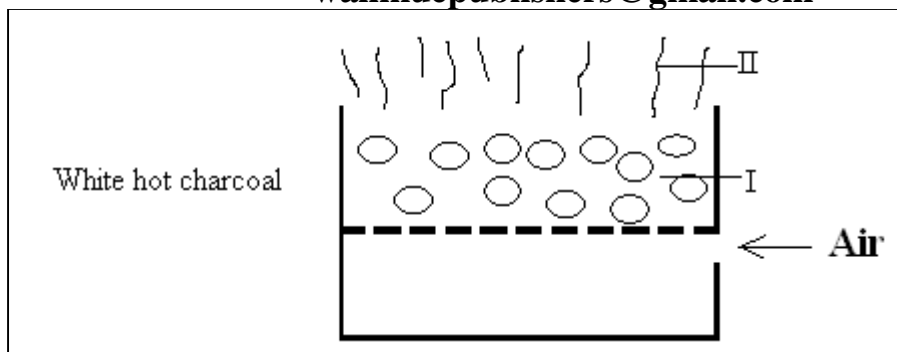
(3marks)

(e) Heating copper (II) sulphate crystals	
(f) Obtaining kerosene from crude oil	
(g) Souring of milk	

m. The diagram below represents a charcoal burner. Study it and answer the questions that follow;

**FOR MARKING SCHEMES CALL/TEXT/WHATSAPP**

**0705525657/0770195807**



Write equations for the reactions taking place in part I and II.

I

(1mark)

II

(1mark)

n. When a mixture of iron filings and sulphur are heated, a red glow spreads through the mixture and a dark grey solid was formed.

a. Identify the dark grey solid formed.

(1mark)

b. Write a chemical equation in which the dark grey solid is formed.

(1mark)

c. What observation can be made when dark grey solid reacts with dilute hydrochloric acid.

(1mark)

o. The table below shows isotopes and their percentage abundances.

Isotope	A	B	C
Isotope mass	54	56	57
Percentage abundances	6.0	92.0	2.0

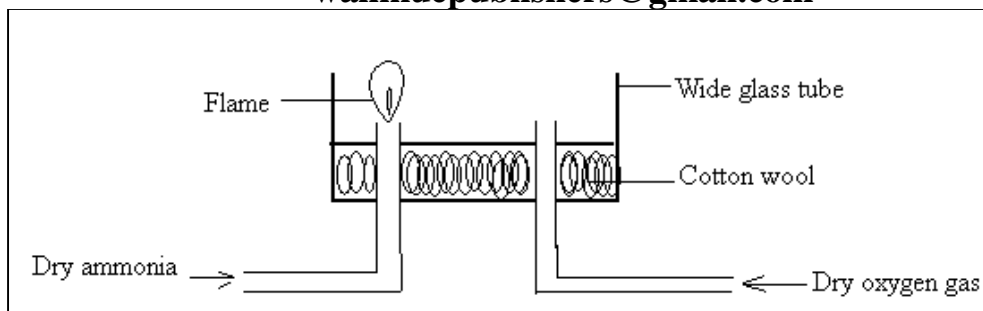
Calculate the relative atomic mass of the element with the above isotopes.

(3marks)

p. Metal R does not react with an oxide of metal S. Metal T reacts with an oxide of metal S. metal Q reacts with an oxide of T. Arrange the metals in increasing order of reactivity.

(2marks)

q. An experiment was set up as shown below.



xv. A student passed dry ammonia gas into the glass tube and tried to ignite the gas before allowing oxygen gas. What observation was made?

(1mark)

xvi. Write the equation for the reaction above

(1mark)

r. (a) Complete the table below to show pairs of substances used to prepare oxygen.

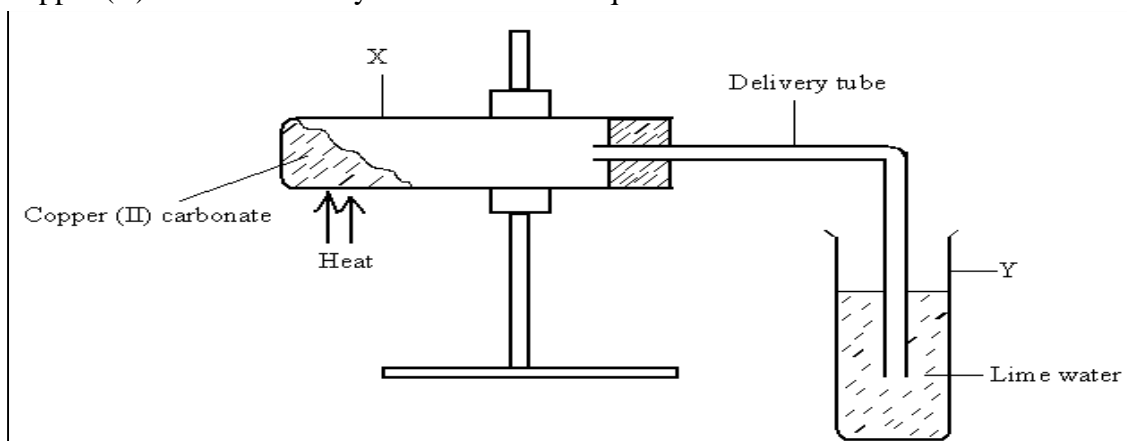
(2marks)

Hydrogen peroxide	
ii)	Sodium peroxide

(b) State the importance of oxygen in cutting metals.

(1mark)

s. The diagram below illustrates an experiment set up to investigate the effect of heat on copper (II) carbonate. Study it and answer the questions that follow.



2. Give the expected observation in each test tube.

X .....

(1mark)

Y .....  
(1mark)

3. Write an equation for the change that occurs in tube X  
(1mark)

t.

a. State one way in which the strength of a base or an acid can be determined in the laboratory.  
(1mark)

b. Give the basicity of the following acids:-

i. Sulphuric (VI) acid.  
(1mark)

ii. Phosphoric acid  
(1mark)

u. An element X is represented as  ${}^{184}_{40}\text{X}$  (X = is not the actual symbol of the element)

a. What is the composition of the nucleus for this element?  
(2marks)

b. Give the electronic arrangement of the element.  
(1mark)

v. Chlorine gas was bubbled through a solution of potassium iodide in boiling tube.

a. State the observation made.  
(1mark)

b. Name the oxidizing agent in this reaction. Explain.  
(2marks)

w. Name the process which take place when:-

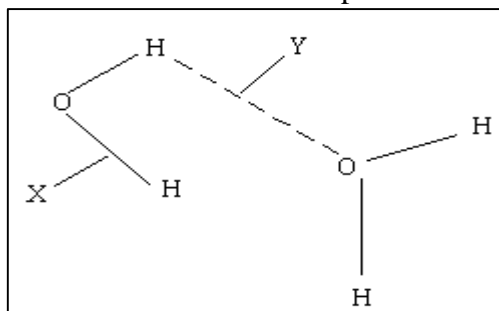


- a. Iodine changes directly from solid to gas  
(1mark)
- b.  $\text{Fe}^{2+}$  changes to  $\text{Fe}^{3+}$   
(1mark)
- c. White sugar changes to black solid when mixed with excess concentrated sulphuric acid. (1mark)
- x. GSTRU and P belong to the same period in the periodic table. The ions formed by the atoms are as below:-  
 $\text{Q}^{2+}$ , U<sup>-</sup>,  $\text{T}^{2-}$ ,  $\text{R}^{3+}$ ,  $\text{P}^+$ ,  $\text{S}^{3-}$
- rr. Arrange the elements in order of decreasing atomic size.  
(1mark)
- ss. Suggest a reason why elements P and Q cannot react with each to form a compound.  
(1mark)
- y. A piece of burning magnesium ribbon was plunged into a gas jar containing sulphur (IV) oxide.
- a. What observation was made?  
(1mark)
- b. Write an equation for the reaction taking place.  
(1mark)
- c. What property of sulphur (IV) oxide is investigated above.  
(1mark)
- z.
- a. What is paper chromatography?  
(1mark)

b. Give two applications of chromatography?

(2marks)

aa. The structure of two molecules of water can be represented as shown below.



Name the type of bonds X and Y

(2marks)

X .....

Y .....

bb. In an experiment 3.36g of iron fillings were added to excess copper (II) sulphate. Calculate the mass of copper that was deposited. (CU= 63.5, Fe = 56)

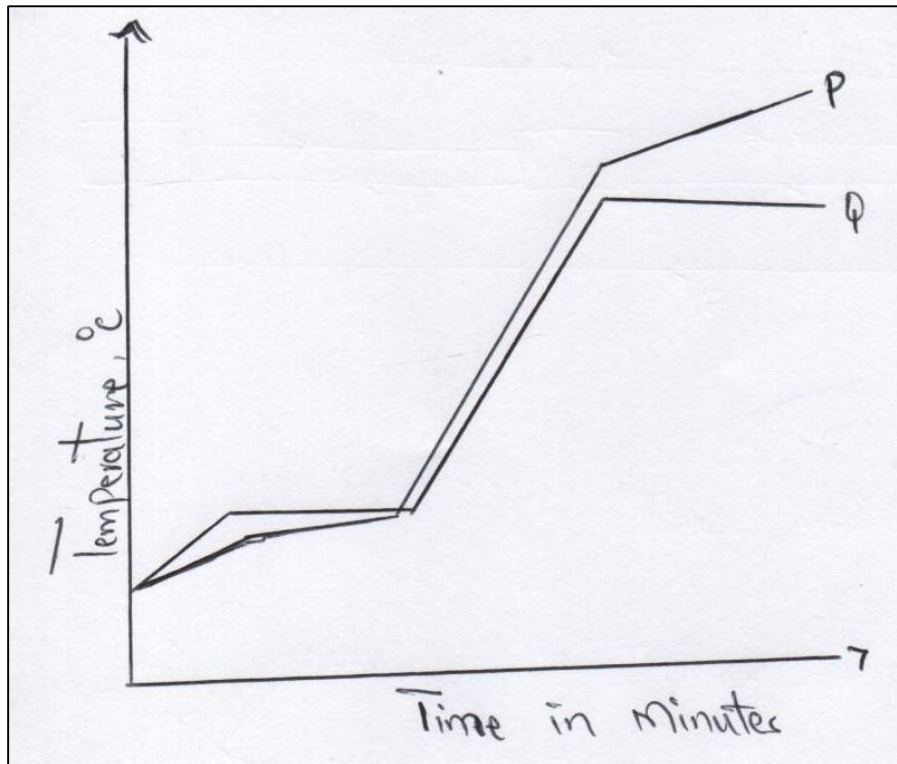
(3mks )

# KCSE PREMOCK SET 2

## CHEMISTRY THEORY

### PAPER 2

cc. (a) The curves below represent the variation of temperature with time when pure and impure samples of a solid were heated separately.



3. (a) Which curve shows the variation in temperature for the pure solid? Explain.

(2mks)

.....  
.....  
.....

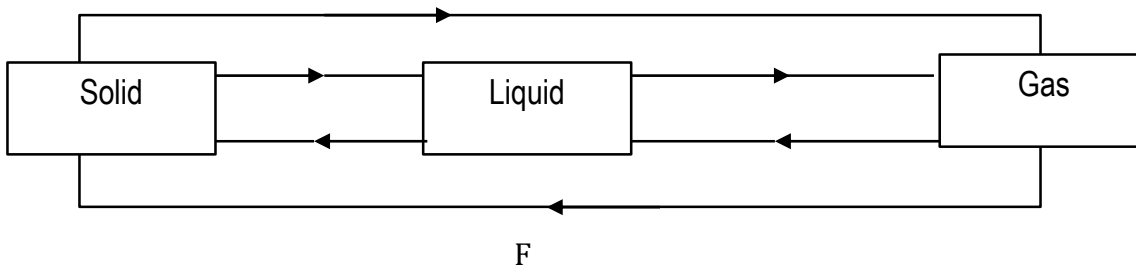
4. State the effect of impurities on the melting and boiling points of a pure substance.

x. Melting points (1 mk)

.....  
.....

xi. Boiling points (1 mk)

(b) The diagram below shows the relationship between the physical states of matter.



(h) Identify the processes B and D.  
(2mks)

B.....

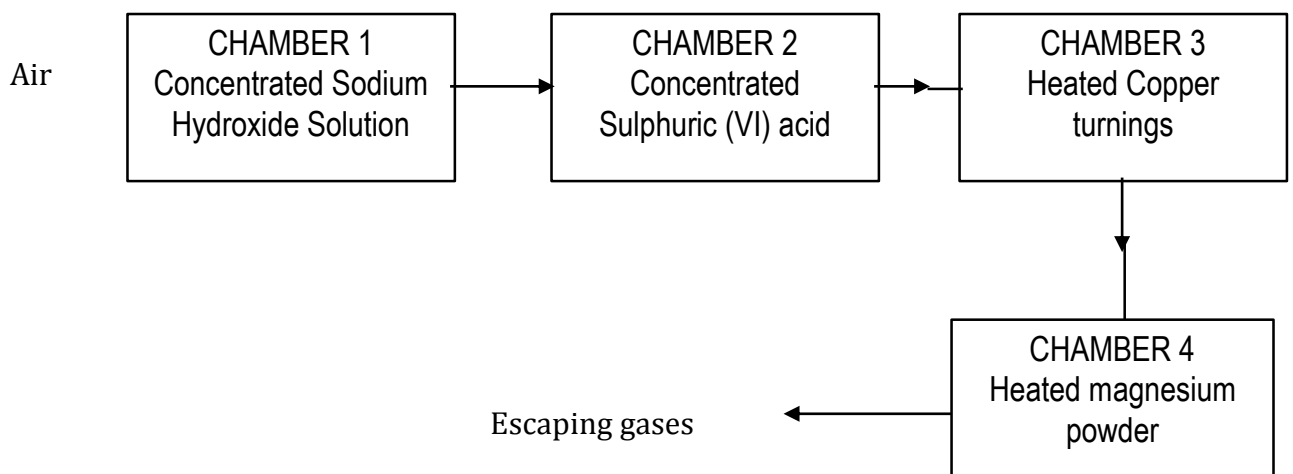
D.....

(i) Name process A  
(1mk)

(j) State two substances in chemistry that undergo the process A  
(1mk)

(k) Is the process E exothermic or endothermic? Explain  
(1mk)

2. Air was passed through several reagents as shown below



f. Name the main inactive component of air  
(1mk)

g. Name the components of air that are removed in the following chambers

(3mks)

xvii. Chamber 1

.....  
.....

xviii. Chamber 3

.....

xix. Chamber 4

.....

C) What is the purpose of passing air through concentrated sulphuric (vi) acid.

(1mk)

.....  
.....

d) Write a chemical equation for the reaction which takes place in :-

z. chamber 1

(1mk)

.....

aa. Chamber 4

(1mk)

.....

e) State and explain the observation made in chamber 3 during reaction

(2mks)

.....  
.....  
.....

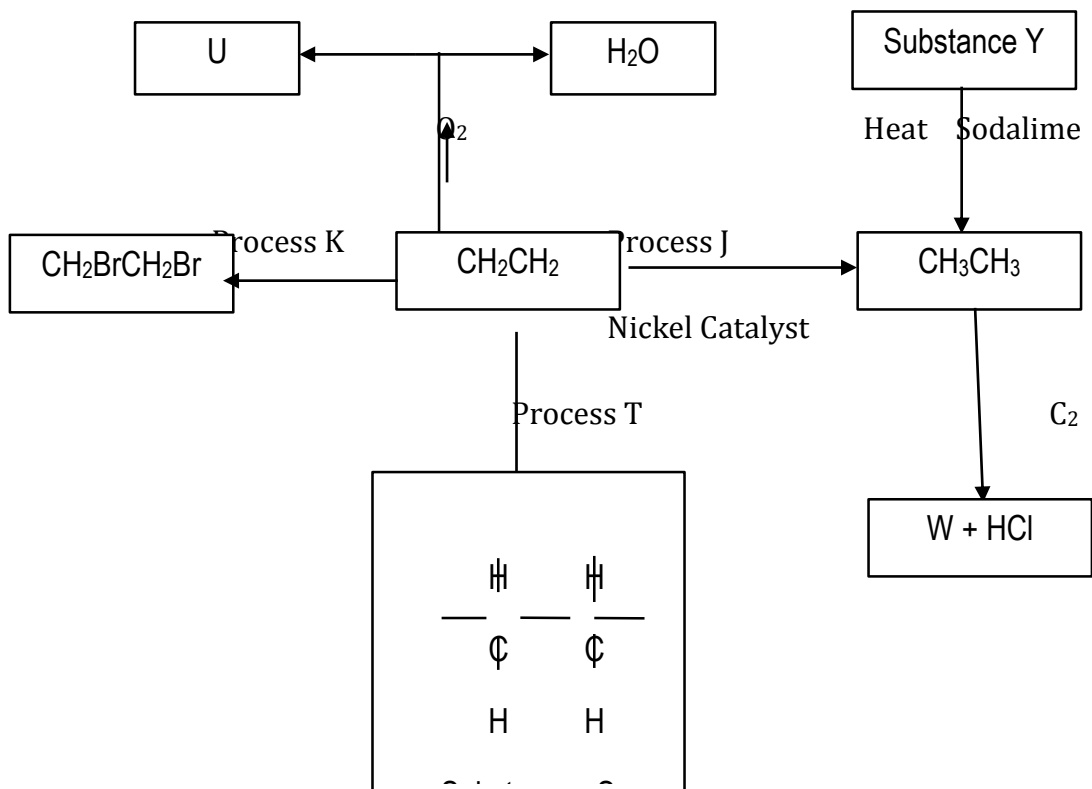
f) Name one gas which escapes from the scheme above

(1mk)

.....  
..

3. (a) Draw and name two isomers of Pentane()

(B) Study the flow diagram below and then answer the questions that follow.



xiv. (i) Name process J, K and T  
(3mks)

J- .....

K- .....

T- .....

xv. State the reagents necessary for processed J and K (1mk)

xvi.

xvii.

xviii.

xix.

xx.

.....  
xxi. Name substances U, W, S and Y  
(4mks)

U .....

W .....

S .....

Y .....

C) Describe how burning can distinguish  $\text{CH}_2\text{CH}_2$  from  $\text{CH}_3\text{CH}_3$

(2mks)

4. The grid below shows a part of the periodic table. The letters do not represent the actual symbols. Study it and answer the questions that follow.

<b>C</b>								<b>T</b>
						<b>U</b>		
<b>X</b>	<b>K</b>		<b>M</b>			<b>Q</b>	<b>W</b>	
	<b>Y</b>					<b>P</b>		<b>Z</b>
<b>J</b>								

g. Identify the elements in period 1

(1mk)

h. With a reason, identify the element with the largest atomic radius

(2mks)

i. Draw the atomic structure of element Q

(1mks)

j. Write down the electronic configurations of elements Y and W (2mks)

Y- .....

W- .....

k. Element G forms an ion  $G^{3-}$  and its ionic configuration 2.8.8. indicate its position on the grid above

(1mk)

l. Identify an element whose oxide reacts with both acids and alkalis

(1mk)

m. i. Write down the chemical formula of the compound formed between elements K and (1mk)

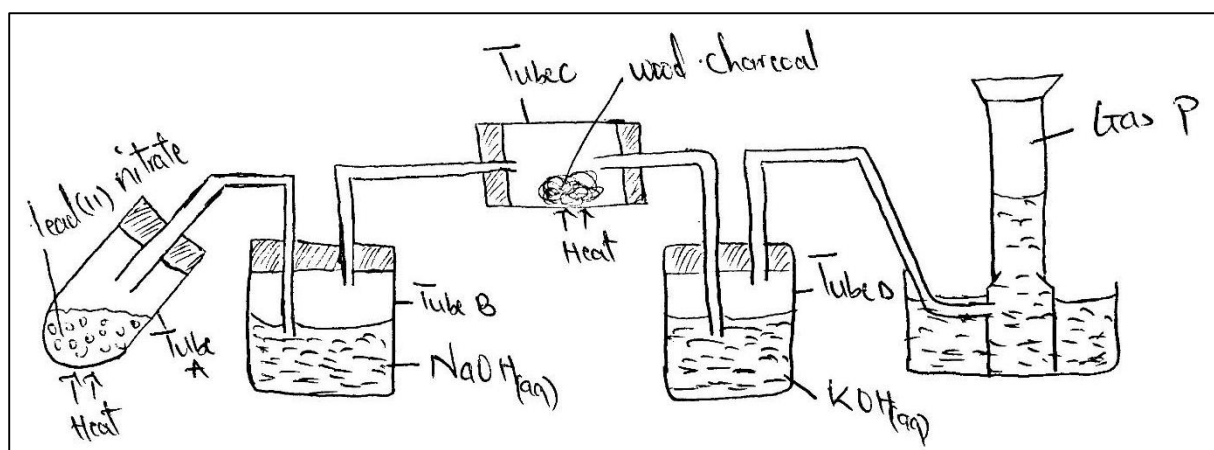
.....  
ii. Draw the bonding in the compound formed in (g) (i) above using dots (.) and crosses (x) to represent electrons

(1mk)

n. Compare the atomic radius elements X and K. Explain

(2mks)

.....  
.....  
.....  
tt. (a) Study the diagram below and answer the questions that follow



g. Write a chemical equation for the reaction in tube A  
(1mk)

.....  
h. Name the two salts formed in tube B

(1mk)

i. State the observation made in tube C  
(1mk)

.....  
j. What is the purpose of potassium hydroxide in tube D.

(1mk)

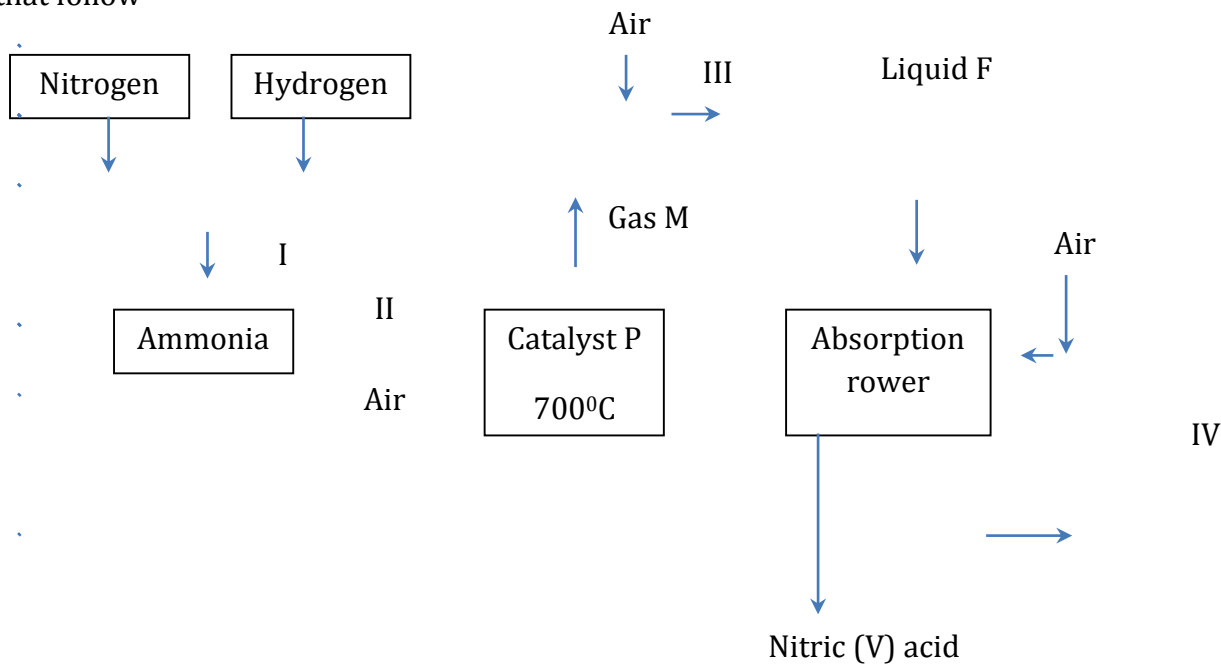


k. Name gas P

(1mk)

.....

(b) The flow chart below shows some industrial processes. Use it to answer the questions that follow



(i) Give the source of the following raw materials

18. Nitrogen gas  
(1mk)

.....

19. Hydrogen gas (1 mk)

.....

ii) Name the following substances;

4. Catalyst P (1 mk)

.....

5. Gas M (1 mk)

.....

6. Liquid F (1 mk)

.....

iii) Write the chemical equations for; formation of gas M.

(1mk)

iv) The reaction in the absorption tower

(1mk)

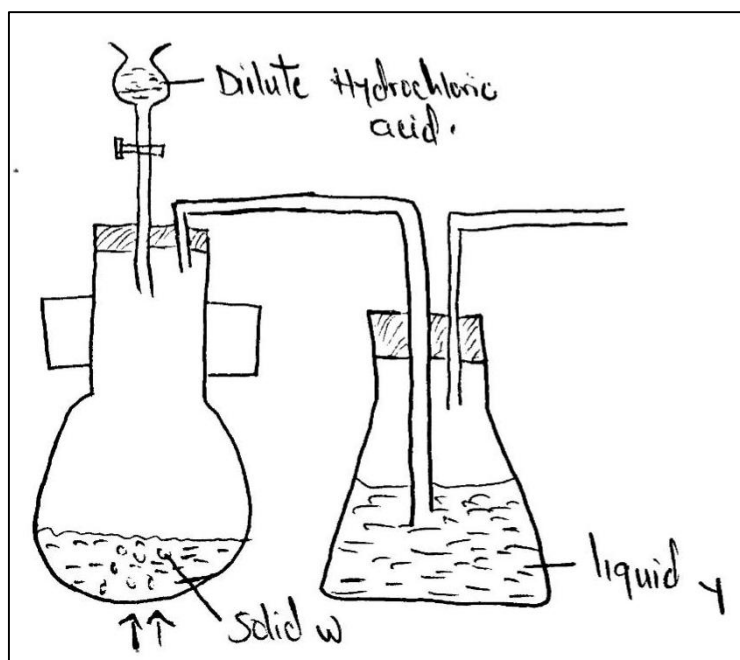
---

v) State one use of nitric (v) acid  
mk)

(1

---

6. Below is a set of apparatus that was used to obtain a dry sample of sulphur(iv)oxide gas



a) Name;

i) Solid W

(1mk)

---

(ii) The apparatus containing dilute hydrochloric acid

(1mk)

.....  
.....  
b) State the role of Liquid Y

(1mk)

.....  
.....  
c) Complete the diagram to show how the gas could have been collected

(1mk)

d) A sample of sulphur(iv)oxide gas was passed through freshly prepared iron(III)sulphate solution. State and explain the observation made

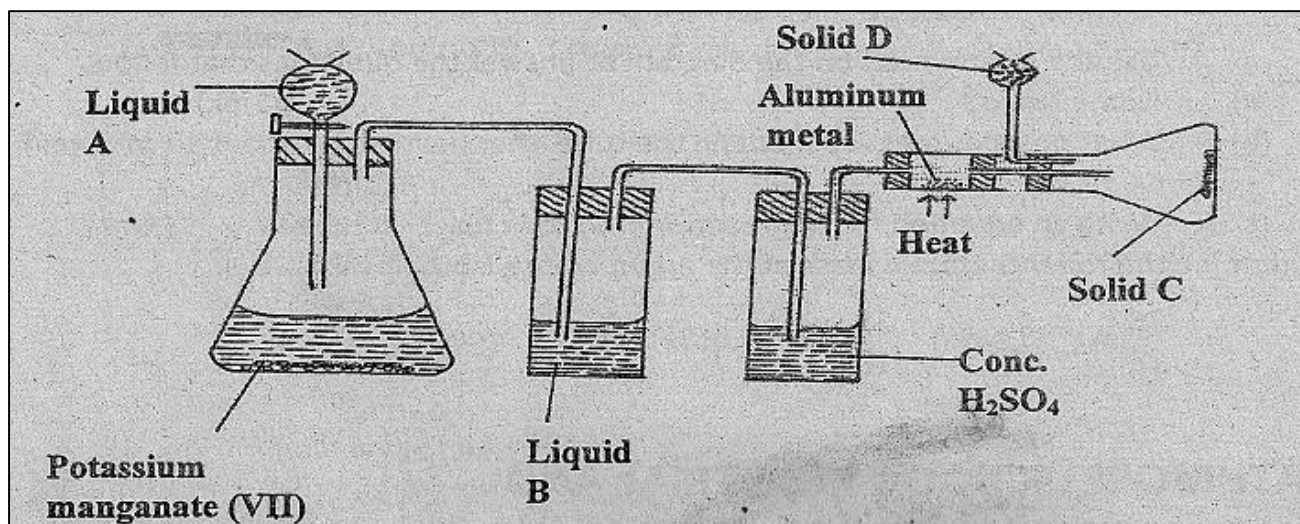
(2mks)

.....  
e) 50cm<sup>3</sup> of 2M Hydrochloric acid was used during the above experiment. Determine the volume

of sulphur(iv)oxide gas produced at r.t.p (molar gas volume = 24dm<sup>3</sup>) (3mks)

.....  
.....  
f) Other than manufacture of sulphuric(VI) acid state two other uses of sulphur(IV) oxide. (2mks)

7. Study the diagram below and answer the questions that follow:



- (i) Name Liquids A and B
- A ..... (1mk)
- B ..... (1mk)
- (ii) Solid D can be anhydrous calcium chloride. Suggest another suitable reagent that can be used in place of anhydrous calcium chloride. (1mk)
- (iii) State the role of D suggested in (ii) above. (1mk)
- (iv) write a balanced equation for the reaction in the conical flask . (1mk)
- (v) Explain why solid C collects further away from the heated aluminum metal. (1mk)
- (vi) In the combustion tube above 0.675g of aluminum metal reacted completely with 1800cm<sup>3</sup> of chlorine gas at room temperature. Determine the molecular formula of solid C given that its relative formula mass is 267. (Al = 27, Cl = 35.5, Molar gas volume at r.t.p. = 24.0 litres) (3mks)

b) The reaction between hot concentrated sodium hydroxide and chlorine gas produces

sodium chlorate (V) as one of the products

(i) give one use of sodium chlorate(V)  
(1mk)

(ii) Explain the difference between bleaching by chlorine and by sulphur(IV) oxide gas.  
(1mks)

c) A solution of hydrogen chloride in water reacts with zinc carbonate but a solution of the

gas in methylbenzene does not. Explain  
(2mks)

# **KCSE PREMOCK SET 2**

## **CRE PP1**

### **ANSWER ONLY FIVE QUESTIONS**

1.
  - a) List down six of the Pauline letters (6mks)
  - b) Identify eight activities performed by God in the second account of creation Gen2:4-25 (8mks)
  - c) How has man failed to take up their responsibility as outlined in the Biblical creation accounts? (6mks)
  
2.
  - a) Discuss ways in which God rewarded Abraham's faith (7mks)
  - b) What conditions did God expect the Israelites to fulfill during the renewal of the covenant? (8mks)
  - c) State five ways in which Christians show their commitments to God today (5mks)
  
3.
  - a) Outline the forms of punishment prophesied to Ahab and queen Jezebel. (8mks)
  - b) Outline the forms of punishment prophesied to Ahab and queen Jezebel (8mks)
  - c) Why are church leaders rejected today? (5mks)
  
4.
  - a) Give eight characteristics of false prophets in the old testament (8mks)
  - b) What message of hope does prophet Amos give to Israel if they turned back to God? (7mks)
  - c) Give six ways in which Christians prepare themselves for the day of the Lord (5mks)
  
5.
  - a) Describe the religious life of the Jews in exile (7mks)
  - b) Identify seven similarities in the life and experience of Nehemiah and Jesus Christ (7mks)
  - c) Give six ways in which Christians assist victims of disasters (6mks)
  
6.
  - a) Give reasons why sacrifices are made in traditional African Society (7mks)
  - b) Outline practices which show belief in life after death in traditional African society (8mks)
  - c) What are the factors that have promoted changes on African community? (5mks)

# **KCSE PREMOCK SET 2**

## **CRE PP2**

### **ANSWER ONLY FIVE QUESTIONS**

1. (a) Outline Jeremiah's Prophecy about the Messiah in reference to (Jeremiah 23: 5-6) (5mks)  
(b) . Describe the events that took place after the birth of John the Baptist in (Lk.1:57-67) (8mks)  
(c). Identify six ways in which Christians play the role of John the Baptist today (7mks)
  
2. (a). Describe the call of the first disciples in (Luke 5: 1-11) (8mks)  
  
(b). Outline Jesus' teachings on the qualities of a true disciple. (7mks)  
  
(c). What are the ways in which church leaders communicate God's message to the people today?  
(5mks)
  
3. (a). Narrate the events that took place during the transfiguration of Jesus (7mks)  
(b). Discuss the main components of the Lord's Prayer. (8mks)  
(c). Give reasons why Christians pray. (5mks)
  
4. (a). Narrate the parable of the friend at midnight (Lk. 11:5-13) (5mks)  
  
(b). Explain reasons why Jesus used parables. (7mks)  
  
(c). List down the methods the church is using to spread the Gospel. (8mks)
  
5. (a). Relate Peter's message on the day of Pentecost in Acts 2:1-40 (7mks)  
  
(b). Outline seven characteristics of the fruit of the Holy Spirit. (7mks)  
  
(c). Identify activities of the church that demonstrate that the Holy Spirit is at work among

**FOR MARKING SCHEMES CALL/TEXT/WHATSAPP**

**0705525657/0770195807**

Christians (6mks)

6. ( a). Explain how the unity of believers is expressed in the concept of the bride (7mks)
- (b). Discuss the causes of disunity in the early church (7mks)
- (c). Outline the contribution of women in the church in Kenya today. (6mks)



# **KCSE PREMOCK SET 2**

312/1

**GEOGRAPHY**

**SECTION A**

**ANSWER ALL THE QUESTIONS IN THIS SECTION**

1.a)What is the difference between a meteor and a meteorite (2mks)

b)State three effects of earth's revolution (3mks)

2.a)List two elements of weather(2mks)

b)Name three processes through which the atmosphere is heated (3mks)

3a)What is weathering (2mks)

b)Give three processes of chemical weathering (3mks)

4a)Name three types of coral reefs (3mks)

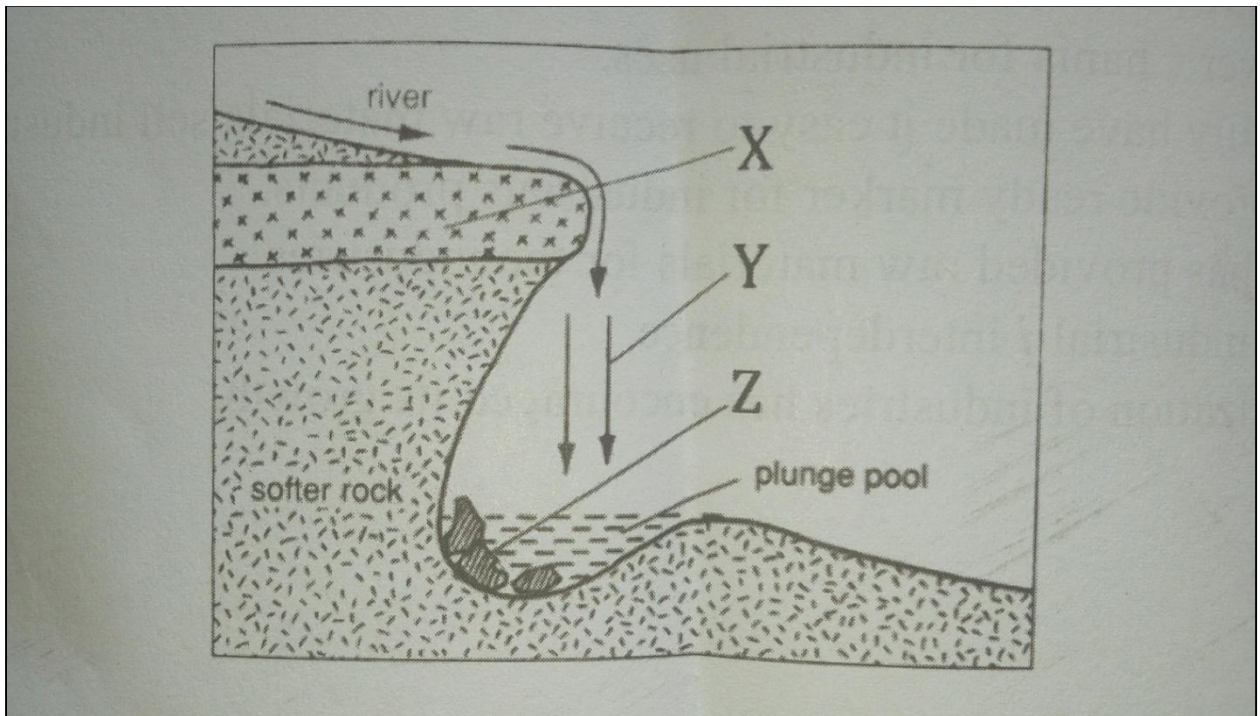
b)What are the benefits of coral reefs in the areas they have developed (2mks)

5a) State two factors which influence occurrence of surface run-off (2mks)

**FOR MARKING SCHEMES CALL/TEXT/WHATSAPP**

**0705525657/0770195807**

b)The diagram below shows a waterfall. Name the features marked X,Y, and Z (3mks)



## SECTION B

### ANSWER QUESTION 6 AND ANY OTHER TWO QUESTIONS FROM THIS SECTION

6.Study the map of Taita hills(scale 1:50.000) provides and answer questions while follows.

Ai)Give the latitudinal position of the South Eastern corner of the map extract (2mks)

ii)State the four figure grid reference of the school at Mrabenyi (1mk)

**FOR MARKING SCHEMES CALL/TEXT/WHATSAPP**

**0705525657/0770195807**

iii) Identify the adjoining sheet number to the S.E of Taita hills (1mk)

Bi) Measure the length of dry weather road D535 from the junction at grid 4028 to the east of the map (2mks)

ii) Calculate the area enclosed by the railway line to the south Eastern part of the map (2mks)

Ci) Reduce the square enclosing Easting 37 to 42 and Northing 26 to 31 by 2, on the reduce square indicate the following.

-Ronge forest

-Road D535

-Outcrop rock (5mks)

ii) Give the new scale of the reduced square (2mks)

Di) Describe the drainage of the area covered by the map (4mks)

ii) Identify two methods of representing relief used in the map extract (2mks)

iii) Citing evidence from the map give two economic activities carried out (4mks)

7ai) What is artesian well? (2mks)

ii) List four conditions necessary for the formation of an artesian well. (4mks)

b) With the aid of a well labeled diagram, describe the three zones of underground water (6mks)

ii) Identify three sources of underground waters (3mks)

c) Explain three ways in which a Karst landscape would influence human activities (6mks)

d) Your class intends to carry out a field study on limestone area near your school

i) Name two surface features you are likely to identify (2mks)

ii) State two problems you are likely to identify (2mks)

8a)i)Define the term glaciation 2mks

ii)Name three types of glaciers 3mks

b)Describe how the following features found in upland glaciated landscape are formed

i)U-shaped valley

Pyramidal peak (5mks)

c)Explain three significance of upland glaciated features to human activities(6mks)

d)Suppose you were to carry out a field study of a glaciated lowland

i)State two advantages of using oral interview to collect information during the field study(2mks)

ii)Name two features found in glaciated lowlands that you are likely to study (2mks)

9a)Differentiate between a soil profile and soil catena(2mks)

ii) Draw a well labeled diagram of a mature soil profile (4mks)

bi) Other than topography name three factors that influence formation of soil (4mks)

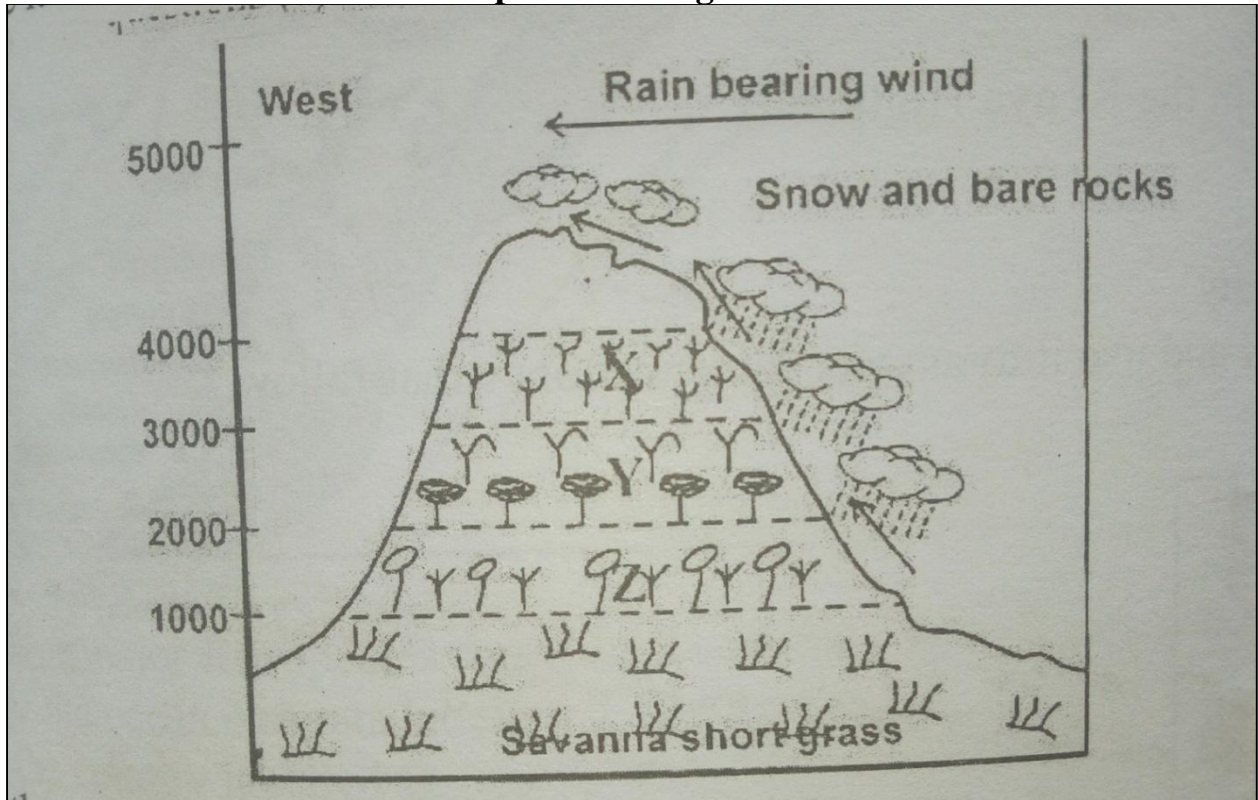
ii) Explain how topography influences formation of soil (3mks)

iii) List three characteristics of desert soils (3mks)

ci) Give three types of soil erosion (3mks)

ii) Explain three effects of soil erosion on human activities (6mks)

10a) The diagram below represents zones of natural vegetation on a mountain within tropical regions, use it to answer questions (a) and (b)



i) Name the vegetation zones marked X, Y and Z (3MKS)

ii) Give two reasons why the mountain top has no vegetation (2mks)

b) Describe the characteristics of savanna grasslands (4mks)

c) Explain four factors that have led to the decline of natural grassland in Kenya (8mks)

d) You carried out a field study of different tree species

**FOR MARKING SCHEMES CALL/TEXT/WHATSAPP**

**0705525657/0770195807**

**walimuepublishers@gmail.com**

i) Identify three activities you would carry out during the field study (3mks)

ii) How would you identify the different tree species? (3mks)

iii) State two methods you would use to determine the height of the trees (2mks)

**FOR MARKING SCHEMES CALL/TEXT/WHATSAPP**

**0705525657/0770195807**



# KCSE PREMOCK SET 2

312/2

**GEOGRAPHY**

**SECTION A: 25 MARKS**

*Answer all the questions*

1. (a) Distinguish between forest and forestry.  
(2 mks)  
  
(b) State **three** factors favouring growth of Mt. Kenya forest.  
(3 mks)
2. (a) Name **three** middle east countries that are oil producers.  
(3 mks)  
  
(b) Give **three** by products obtained when crude oil is refined.  
(2 mks)
3. (a) Name **two** counties in Kenya where wheat is grown on large scale.  
(2 mks)  
  
(b) Give **three** physical conditions that favor large scale wheat farming in the Prairies provinces of Canada.  
(3mks)
4. (a). Define the term nomadic pastoralism.  
(2 mks)  
  
(b). Give **three** breeds of beef cattle reared in Kenya.  
(3 mks)
5. (a) A photograph is divided into 3 parts. Name them.  
(3 mks)  
  
(b) State **two** limitations of using photographs.  
(2 mks)

**SECTION B: 75 MARKS.**

6. (a). Differentiate between secondary and primary data.  
(2 marks)  
(b). Use the table below to answer the questions that follow.  
Number of dairy animals in division X on the Kenyan highlands in 1992.

TYPE	NUMBER	

**FOR MARKING SCHEMES CALL/TEXT/WHATSAPP**

**0705525657/0770195807**

Guernsey	8400	
Ayrshire	7200	
Jersey	10800	
Freshian	16400	
Shahiwal	5200	

(i). Using a scale of 1cm to represent 4000 animals, represent the above data using a divided rectangle.

(6mks)

(ii). State **two** advantages of using a divided rectangle to represent data.

(2mks)

(iii). Name **three** other ways through which the data above can be statistically presented. (3 mks)

(c). State **three** physical factors that favour dairy farming in the Kenya highlands

(3mks)

(d) (i) Explain **three** ways in which dairy farming in Kenya is different from dairy farming in Denmark.

(6mks)

(ii). State **three** by-products of milk.

(3 mks)

7. (a) (i) Name **two** indigenous softwood trees in Kenya.

(2 mks)

(ii) State **five** factors that favour the development of softwoods in Kenya.

(5 mks)

(b) (i) Explain **four** problems experienced in commercial exploitation of tropical rain forests in Africa.

(8 mks)

(ii) Give **four** protective roles of forests in a country

(4 mks)

(c) Explain **three** problems Canada experiences in exploiting her forests.

(6 mks)

8. (a) (i) Name **two** major counties in Kenya known for high maize production.

(2 mks)

(ii) What is the importance of maize production to Kenya's economy.

(6 mks)

(iii) Name the Board that is known for buying and selling of maize in Kenya.

(1 mks)

(b) What are the problems facing the maize farming in Kenya.

(8 mks)

**FOR MARKING SCHEMES CALL/TEXT/WHATSAPP**

**0705525657/0770195807**

- (c) Explain **four** physical conditions that favour maize growing in Kenya.  
(8 mks)
9. (a) Define the term mineral  
(2mks)
- (b) (i) Name **two** areas in South Africa where diamond is mined.  
(2mks)
- (ii) Give **four** ways in which minerals occur.  
(4 mks)
- (c). (i) Explain **three** negative effects of mining on the environment.  
(6mks)
- (ii) Identify any **two** methods of mining.  
(2mks)
- (iii) Name a port through which minerals in East Africa are exported.  
(1mk)
- (d). Explain **four** ways in which soda ash contributes to the economy of Kenya  
(8mks)
10. (a) ( i) Differentiate between market gardening and floriculture.  
(2mks)
- (ii) State **four** features of horticulture.  
(4mks)
- (b). (i) State **three** physical factors that favour development of horticulture in Kenya.  
(3mks)
- (ii) Explain why horticulture is more developed in Netherlands than in Kenya.  
(8mks)
- (c) State and explain **four** contributions of horticulture to the economy of Kenya.  
(8mks)

# **KCSE PREMOCK SET 2**

**441/1**

**HOMESCIENCE**

**SECTION A. (40 MKS)**

1. Define food poisoning. (2 mks)

.....  
.....

2. State two uses of calcium in the body. (2 mks)

.....  
.....

3. Give two examples of garnishes and two for decorations in foods. (2 mks)

.....  
.....

4. State two advantages of using left – over foods. (2 mks)

.....  
.....

5. State four causes of anaemia. (2 mks)

.....  
.....

- Give two uses of blanching in foods. (2 mks)

.....  
.....

6. State two functions of the Kenya Bureau of Standards. (2 mks)

.....  
.....

**FOR MARKING SCHEMES CALL/TEXT/WHATSAPP**

**0705525657/0770195807**

7. State two factors which will determine the choice of building material for a house. (2 mks)

.....  
.....

Give two signs of infestation of roundworms in a person. (2 mks)

.....  
.....S

State two aspects of a well groomed person. (2 mks)

.....

8. State two classifications of refuse giving an example in each. (2 mks)

.....  
.....

9. Define inflation. (2 mks)

.....  
.....

10. Give two points to consider when choosing colour schemes for a house. (2 mks)

.....  
.....

11. State two good qualities of synthetic filaments used on brooms and brushes. (2 mks)

.....  
.....

12. State two signs of pregnancy. (2 mks)

.....  
.....

13. State the use of the following in laundry work. (2 mks)

a) Fabric condition

.....  
.....

b) Salt

14. State two qualities of a good laundry detergent. (2 mks)

.....  
.....

State two points to consider when choosing an ironing board. (2 mks)

.....  
.....

15. State two qualities of a well made round collar. (2 mks)

.....

16. State two good qualities of woolen fibres. (2 mks)

.....  
.....

**SECTION B. (20 MKS)**

17. You are at home over the half – term holiday. Your mother has asked you to carry out several tasks in the house. Give the procedure for the following.

a) Special cleaning of brooms and brushes. (10 mks)

.....  
.....  
.....  
.....

b) Laundering a handkerchief. (5 mks)

.....  
.....  
.....

- c) Clean a plastic cup. (5 mks)

.....  
.....

**SECTION C. (40 MKS)**

Answer any two questions from this section in the space provided.

18. a) Explain four reasons for using convenience foods. (8 mks)

.....  
.....  
.....  
.....S

- tate four uses of iodine in the body. (4 mks)

.....  
.....

- b) Explain four importances of consumer education. (8 mks)

.....  
.....  
.....

19. a) Give th procedure for making a French seam with illustrations. (8

mks)

.....  
.....S

- State five points to consider when using disinfectants in laundry work. (5 mks)

- b) i) State two types of sewing machines. (7 mks)

.....  
.....

ii) State six ways on the care of sewing machines.

.....  
.....  
.....  
.....

20. a) State four ways in which a consumer can be protected. (4

mks)

.....  
.....  
.....

b) Explain four points to consider when choosing flowers for arrangements. (8

mks)

.....  
.....  
.....

c) Explain four points to consider when choosing toys for children. (8

mks)

.....  
.....  
.....



# **KCSE PREMOCK SET 2**

## **HISTORY 311/1**

### **SECTION A (25 MARKS)**

**Answer all the questions in this section.**

1. Identify two written sources of information on Kenyan history (2mks)
2. Name two aspects of history that you have studied (2mks)
3. Give the main reason for the migration of Eastern Bantu from Shungwaya (1mk)
4. Identify two functions of the warriors among the Bantu communities in the pre-colonial period (2mks)
5. Identify one reason that can lead to revocation of citizenship by birth in Kenya (1mk)
6. State ways in which the national accord and reconciliation act of 2008 affected the composition of government in Kenya (2mks)
7. Identify two types of democracy (2mks)
8. Give two social factors that led to the scramble and partition of East Africa (2mks)
9. Give two methods which were used by the British to establish their rule in Kenya (2mks)
10. Give the name of the Wangi leader who collaborated with the British (1mk)
11. Who was the British administrator in charge of the Imperial British East African Company (1mk)
12. Give two objectives for establishing colonial health centres (2mks)
13. Identify the political party formed in 1960 to champion the interest of the minority groups in Kenya (1mk)
14. Name the election body that organizes general elections in Kenya (1mk)
15. Give two types of elections held in Kenya (2mks)
16. Identify the main voting system used in Kenya during elections (1mk)
17. Who is the head of judiciary in Kenya (1mk)

### **SECTION B (45 MARKS)**

**Answer any THREE questions from this section**

18. a) Give five reasons for the migration of the Luo into Kenya during the 19<sup>th</sup> century  
b) Explain five effects of migration and settlement of the Luo into Kenya (10mks)
19. a) State three reasons why Seyyid Said transferred his capital from Muscat to Zanzibar in 1840 (3mks)  
b) Explain six factors which contributed to the development of trade between the Kenyan Coast and the outside world in the 16<sup>th</sup> century (12mks)
20. a) State three powers given to Imperial British East African Company by the British  
b) Explain the reasons for an end to the Imperial British East African Company rule in 1895 (12mks)
21. a) Give five early political organizations formed in Kenya up to 1939 (5mks)  
b) Explain problems experienced by European settlers in Kenya (10mks)

### **SECTION C (30 MARKS)**

**Answer any TWO questions from this section**

5. a) Give three levels of conflicts that can be experienced in Kenya (3mks)  
b) Explain six factors that promote National Unity in Kenya (12mks)
6. a) State five principles of Democracy (5mks)  
b) Explain the process of constitution review (10mks)
24. a) State five functions of returning officers in a general election in Kenya (5mks)  
b) Explain five factors which can interfere with free and fair elections in Kenya (10mks)

**FOR MARKING SCHEMES CALL/TEXT/WHATSAPP**

**0705525657/0770195807**

# **KCSE PREMOCK SET 2**

## **HISTORY AND GOVERNMENT PAPER 2**

### **SECTION A (25 marks)**

**Answer ALL the questions in this section**

1. Identify two branches of history.  
(2mks)
2. Name two areas in Africa where the remains of Australopithecus were first discovered. (2mks)
3. State one theory that explains how early agriculture developed.  
(1mk)
4. Identify two methods of irrigation used in the ancient Egypt.  
(2mks)
5. Identify the main item from North Africa in Trans-saharan trade.  
(1mk)
6. Give two features of the Roman roads by 300AD.  
(2mks)
7. State two disadvantages of horn blowing as a means of communication.  
(2mks)
8. What is the main advantage of a cell phone.  
(1mk)
9. Identify the main source of energy used in the early stages of industrial Revolution in Europe. (1mk)
10. Give the name of the scientist who discovered electric magnetic radiation.  
(1mk)
11. Name two foreign powers that tried to conquer Cairo in the pre-colonial period.  
(2mks)
12. Identify two social functions of the ancient city of Athens in Greece.  
(2mks)
13. Identify two European powers that acquired colonies in East Africa.  
(2mks)
14. Mention one country in Africa that was not colonized by European powers.  
(1mk)

**FOR MARKING SCHEMES CALL/TEXT/WHATSAPP**

**0705525657/0770195807**

- 15 Name the chartered company that administered Zimbabwe during the process of colonization. (1mk)
- 16 Give one reason why the Burns constitution was rejected by Educated Africans in Ghana. (1mk)
- 17 Give one political development in south Africa between 1990 and 1994.

**SECTION B. (45MKS)**

Answer three questions from this section

- 18(a) Give five physical changes which occurred in early human beings as they evolved from ape like creature to modern man.
- (b) Explain five effects of early agriculture in Mesopotamia.
- 19(a) Give three methods used to acquire slaves from West Africa during the Trans-Atlantic trade.(3mks)
- (b) Explain six factors that led to the decline of the Trans-Atlantic trade
- 20(a) Give three developments that have taken place in road transport system since 1750 AD (3mks)
- (b) Explain six ways through which the invention of the railway speeded up industrialization in Europe.(12mks)
- 21(a) State five causes of the chimurenga War of 1896-1897.
- (b) Explain five results of the Chimurenga War.

**SECTION C(30MKS)**

Answer **TWO** questions from this section

- 22(a) Give three social aspects of the Shona during the pre-colonial period.
- (b) Describe the political organization of Shona kingdom during the pre-colonial period.
- 23(a) State the reasons why the British used direct rule to administer Zimbabwe
- (b) Explain six reasons for the failure of direct rule in Southern Nigeria.
- 24(a) Mention five factors that facilitated the growth of nationalism in Ghana.
- (b) Explain five reasons why FRELIMO succeeded in its armed struggle against the Portuguese

# KCSE PREMOCK SET 2

232/1 PHYSICS (Theory)

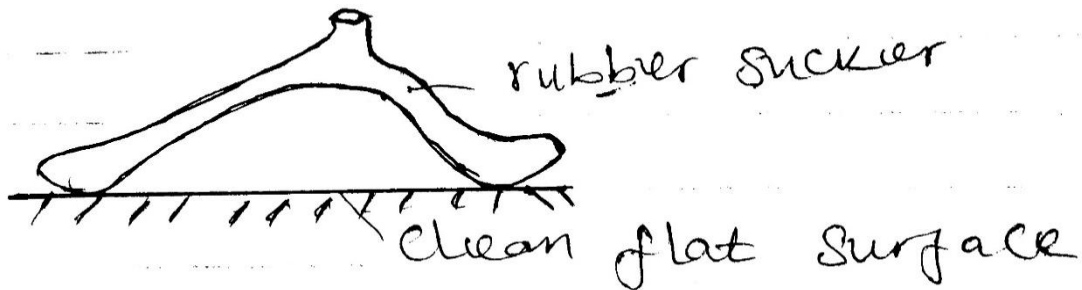
PAPER 1

SECTION A (35 Marks)

(Answer all questions in this section)

1. A micrometer screw gauge has a zero error of  $-0.03\text{mm}$ . It is used to measure the diameter of a wire. If the actual diameter of the wire is  $0.30\text{mm}$ , draw the micrometer screw gauge showing the measured diameter of the wire.  
(3 marks)

2. The figure (1) below shows a rubber sucker, explain why the sucker sticks on a clean flat surface.  
(1 mark)

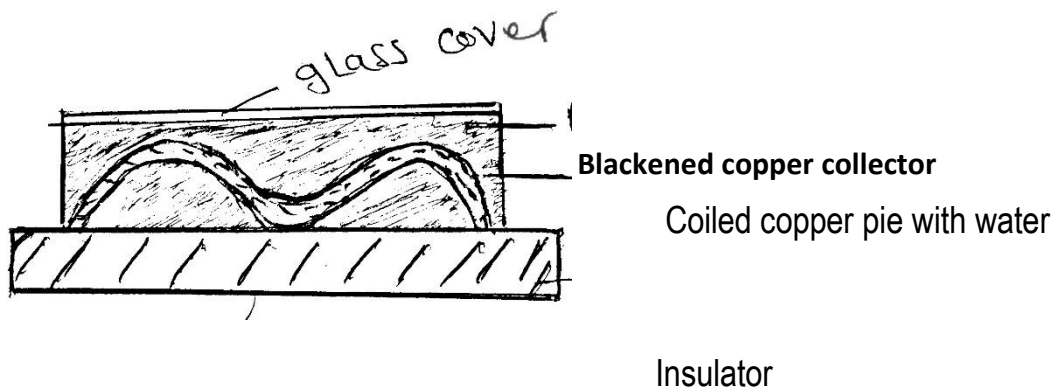


3. You are provided with a test – tube, thread and a meter ruler. Outline the steps you would use to measure the circumference and hence the diameter of the test – tube.  
(4marks)

**FOR MARKING SCHEMES CALL/TEXT/WHATSAPP**

**0705525657/0770195807**

4. A car weighs 12 000N.
- i. What is the force acting on one tyre if the weight is evenly distributed amongst the tyres? (1 mark)
- ii. If the area of contact of tyre is  $80\text{cm}^2$ . Calculate the pressure of the air in the tyre. (3 marks)
5. Why are gases easily compressible while liquids and solids are almost incompressible? (1 mark)
- .....
6. Name three properties of a clinical thermometer that make it suitable for measuring body temperature (3 marks)
- .....
- .....
7. How does the volume of a given mass of water change as;
- i) The water is cooled from  $10^\circ\text{C}$  to  $0^\circ\text{C}$ ? (1 mark)
- ii) The water is frozen to ice at  $0^\circ\text{C}$ ? (1 mark)
8. The figure (2) below shows a section of a solar heater



Explain;

- i) Why the pipeline is fixed to a dark coloured collector plate (1 mark)

Why is pipe coloured several times (1 mark)

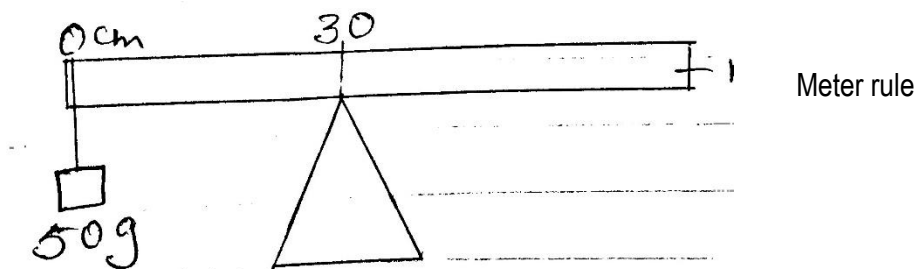
Why is pipe made of copper (1 mark)

Why is the collector plate fixed to an insulator? (1 mark)

- ii) Why the panel front covered with glass (1 mark)

9. (a) Define moments of a force (1 mark)

(b) The figure (3) below shows a uniform meter rule balanced at the 20 cm mark when a mass of 50g is hanging from its zero cm mark



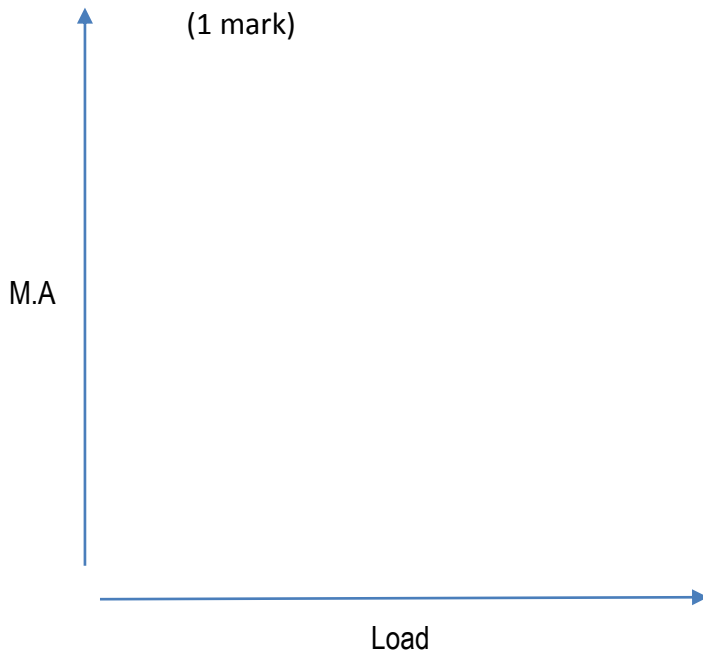
Calculate the weight of the rule (3 mar)

10. State two practical applications of stability (2 marks)

11. Explain how loose clothing may affect safety in the laboratory (2 marks)

12. Water flows steadily along a horizontal pipe at a volume rate of  $8.0 \times 10^{-3} \text{ m}^3/\text{s}$ . If the cross-section area of the pipe is  $20 \text{ cm}^2$ . Calculate the velocity of the fluid.  
(3 marks)

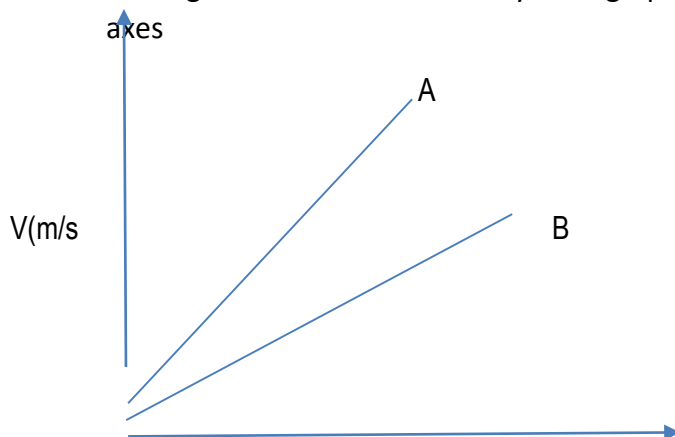
13. On the axis provided sketch a graph of mechanical advantage (MA) against load for a pulley system  
(1 mark)



**SECTION B : ( 45 marks)**

**(Answer all the questions in this section)**

14. The figure below shows velocity-time graphs of two objects A and B drawn on same axes



The two objects are of equal masses. The same size of force is applied against each object. State with a reason which of the two objects stops in a shorter distance.  
(2 marks)

.....

(b) An object moving at 30 m/s starts to accelerate at  $5\text{m/s}^2$  so that its velocity becomes 50 m/s.

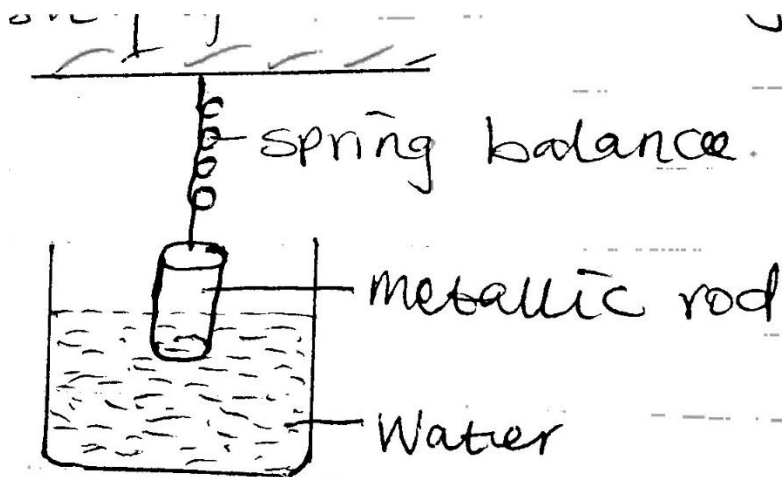
i) Find the distance moved during this acceleration (3 marks)

ii) The object is now braked so that it comes to rest in a time of 5 seconds. Find the braking force if its mass was 2700g. (3 marks)

15. State the law of floatation (1 mark)

.....  
.....

(b)The figure (5) below shows a metallic rod of length 10cm and uniform cross-sectional area  $4\text{cm}^2$  suspended from spring balance with 7.5 cm of its length immersed in water. The density of the material is  $1.5\text{g/cm}^3$ .The density of water is  $1\text{g/cm}^3$ .



Determine:

i) The mass of the rod (3marks)

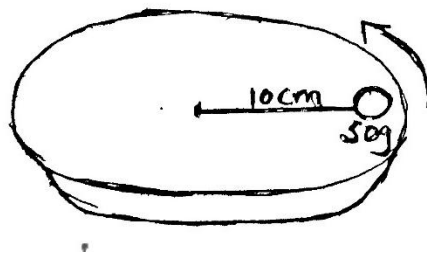


- ii) The upthrust acting on the rod  
(3marks)
  
- iii) The reading Of the spring balance  
(2marks)
  
- iv) The reading of the spring balance when the rod is wholly immersed in water  
(3marks)

16. (a) State what provides centripetal force for an electron moving round the nucleus  
(1mark)

.....  
.....  
.....

(b) The figure (6) below shows a turntable on which a mass of 50g is placed 10cm from the centre



Frictional force between the 50g mass and the turntable is 0.4 N. When the turntable is made to rotate with angular velocity of  $W$  rad/sec, the mass starts to slide off.

- i) Determine the:
  - I. Angular velocity  $W$   
(3marks)

- II. Time taken to make one complete revolution  
(3marks)

- ii) On the figure, draw a path that would be taken by the 50g mass if the turntable suddenly came to stop  
(1 mark)

17. (a) An object of the mass 150kg moving at 20m/s collides with a stationary object of mass 90kg. They couple after collision. Determine the :

(i) Total momentum before collision (2 marks)

(ii) Total momentum after collision (1 mark)

(iii) Their common velocity after collision (2 marks)

(b) A piece of wire of length 12m is stretched through 2.5cm by a mass of 5 kg. assuming that the wire obeys the Hooke's law, what force will stretch it through 4.0 cm. (2marks)

.....  
.....

18. (a) Explain why an air bubble increases in volume as it rises from the bottom of a lake to the surface

(2 marks)

(b) An immersion heater rated 2.5Kw is immersed into a plastic jug containing 21kg of water and switched on for four minutes. Determine:

i) The quantity of heat gained by water (2 marks)

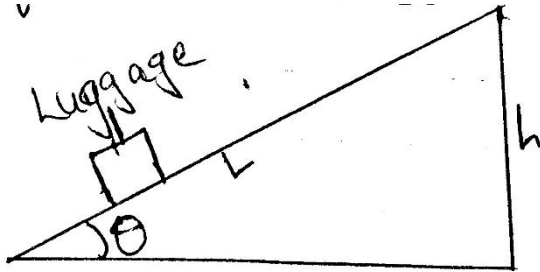
ii) The temperature change for water. (specific heat capacity of water =  $4.2 \times 10^3 \text{Jkg}^{-1}\text{K}^{-1}$ )

**FOR MARKING SCHEMES CALL/TEXT/WHATSAPP**

**0705525657/0770195807**

(3 marks

(c) The figure (7) below shows an inclined plane used to load heavy luggage's onto a lorry. The length of the plane is L metres and the height is h metres



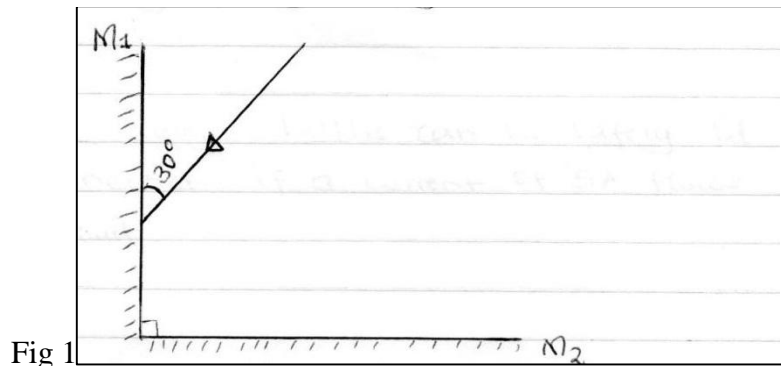
Show that the velocity ratio is given by  $\frac{1}{\sin \theta}$

# KCSE PREMOCK SET 2

## PHYSICS Paper 2 (THEORY)

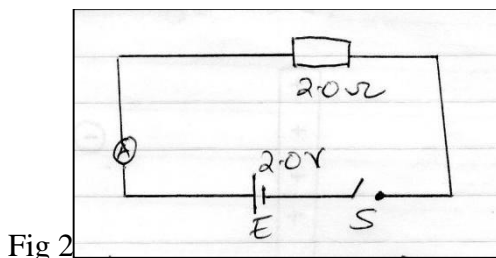
### SECTION A (25MARKS) Answer all the questions

- Figure 1 below shows two mirrors M1 and M2 are inclined at right angles to each other.



Trace the reflection of the ray through the two mirrors and find the angle between the incident ray and reflected ray of mirror M<sub>2</sub>. (2mks)

- State the reasons why a convex mirror is preferred over a plane mirror for use as a driving mirror. (1mk)
- A current of 0.5A flows in a circuit. Determine the quantity of charge that crosses a point in 4 minutes through the circuit. (2mks)
- A radio station broadcasts on a wavelength of 150m at a frequency of 200 kHz. Calculate the velocity of the radio waves. (2mks)
- The internal resistance of the cell in the figure below is 0.5 Ω.



Determine the ammeter reading when the switch S is closed. (2mks)

- A man standing 400 away from a wall bangs two pieces of wood together and hears an echo 2.5 seconds later. Determine the speed of sound in air at that place. (2mks)

**FOR MARKING SCHEMES CALL/TEXT/WHATSAPP**

**0705525657/0770195807**

7. State the property of light associated with formation of shadows. (1 mark)

8. In the circuit diagram shown in figure 3 the lamps are identical and cells are also identical.

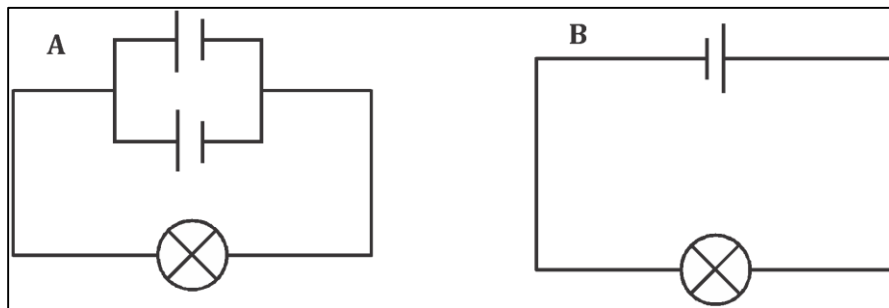


Fig 3

State with a reason, in which circuit the lamp will be lit for a longer period. (2 marks)

9. Explain in terms of domain theory, what happens when a bar magnet is placed in a solenoid in which an alternating current flows. (2 marks)

10. Use appropriate rays to complete the ray diagram in figure 4 and state the position of the object formed. (3 marks)

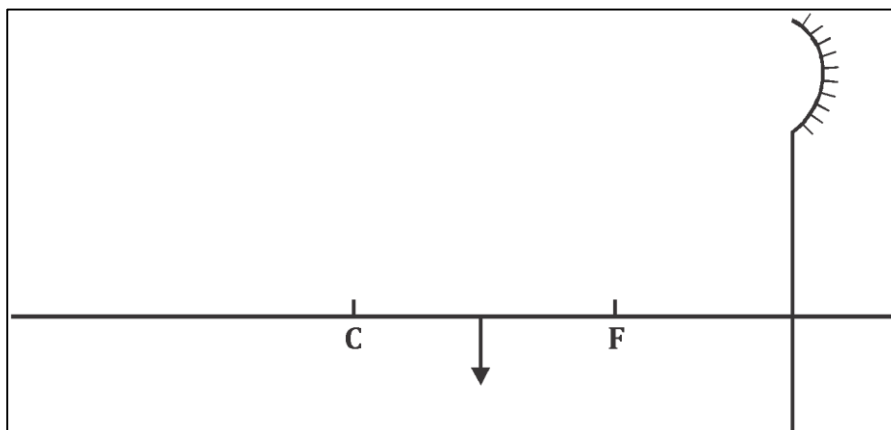
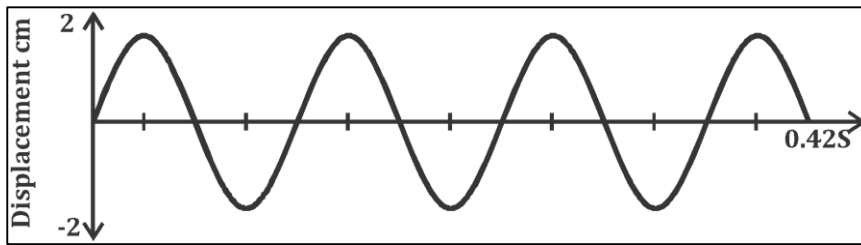


Fig 4

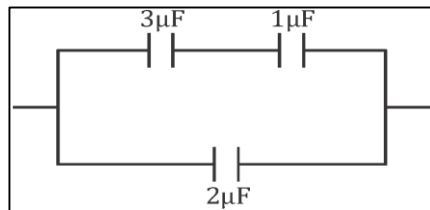
11. Figure 5.0 shows a transverse wave.



(l) Calculate the frequency of the wave. (2 marks)

(m) Sketch another wave on the same diagram that has double the frequency and half the amplitude and label it as M. (1 mark)

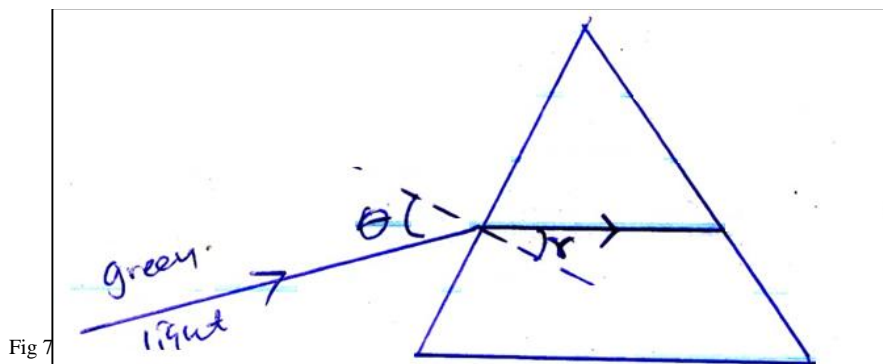
12. The figure 6.0 below shows a network of capacitors.



Determine the combined capacitance of the network. (2 marks)

**SECTION B (55 MARKS)**

bb. The figure below shows a ray of green light through a prism. The speed of green light in the prism is  $2.0 \times 10^8 \text{ m/s}$



o. Determine the refractive index of the prism material (speed of light in air =  $3.0 \times 10^8 \text{ m/s}$ ) (3mks)

p. Given the  $r = 23.2^\circ$ , determine the angle  $\theta$  (3mks)

dd. i) The diagram below show two prisms

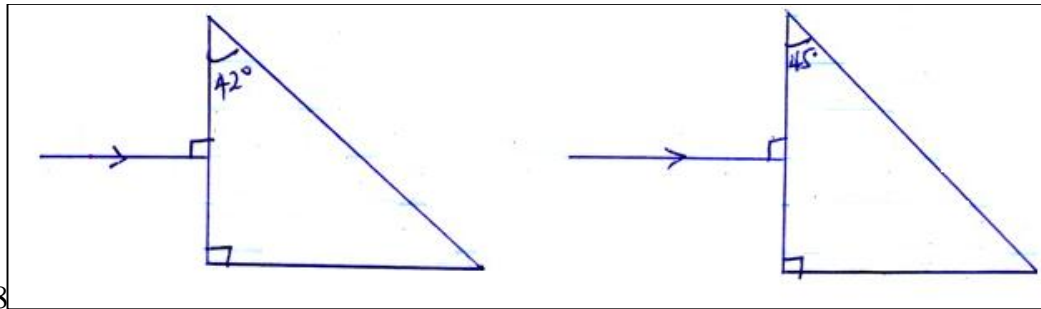


Fig 8

Given that the critical angle of the glass in both prisms is  $42^\circ$  sketch the paths of the two rays in each prism indicating all the angles. (2mks)

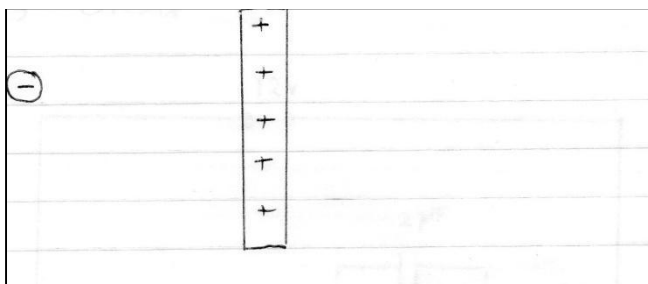
ii) Give two application of total internal reflection (2mks)

h. a) What is meant by the term capacitance? (1mk)

5. The figure below shows a point placed near a positively charged rod.

Draw on the diagram the resulting electric field patterns. (1mk)

Fig 9



6. When a positively charged conductor is brought close to a candle, the flame is diverted as shown in the figure below. Explain this observation. (2mks)

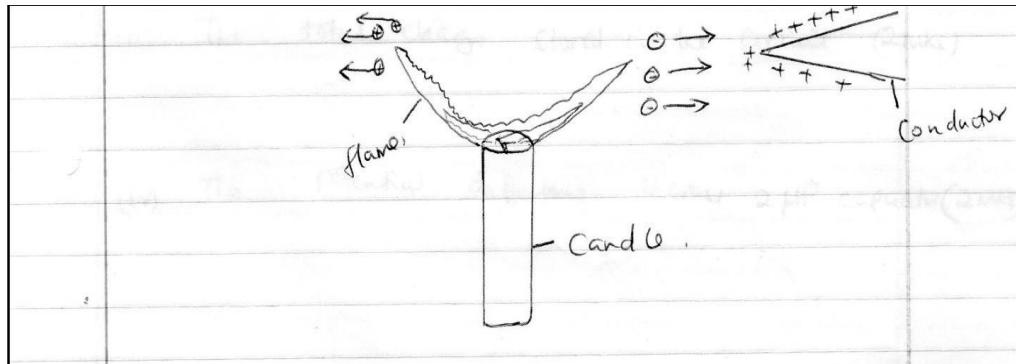


Fig 10

7. The figure below shows three capacitors of capacitance  $3\mu\text{F}$ ,  $2\mu\text{F}$ , and  $6\mu\text{F}$ . Connected to a 12v supply circuit.

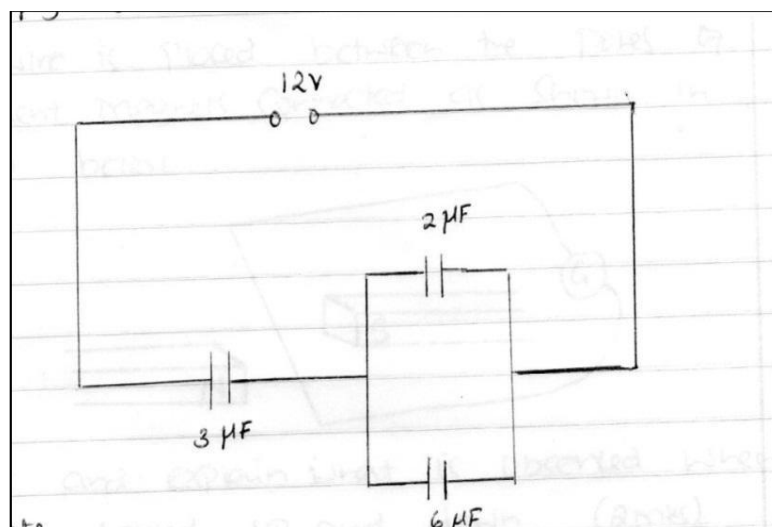


Fig 11

Calculate:

- vii. The total capacitance of the circuit. (3mks)
- viii. The total charge stored in the circuit. (3mks)

**FOR MARKING SCHEMES CALL/TEXT/WHATSAPP**

**0705525657/0770195807**



ix. The potential differences across  $2\mu\text{F}$  capacitor. (2mks)

15. (a) Explain how sound reaches our ears. (2 marks)

(b) State two characteristics of sound waves. (2 marks)

(c) Wambua strikes a steel super bridge with a hammer. If the speed of sound in steel is  $5,200\text{ m/s}$ , determine the time taken for the sound to reach another Samuel  $2.6\text{ km}$  far off the bridge with his ear on the rail. (2 marks)

(d) A boy whistles once at a distance  $250\text{ m}$  from a vertical cliff. If the temperature in the surrounding is  $5^{\circ}\text{C}$ . If the speed of sound = ( $331.5\text{ m/s}$  at  $0^{\circ}\text{C}$ ) the speed in air increases at about  $0.6\text{ m/s per }^{\circ}\text{C}$ ,

a. Determine the distance travelled by sound. (2 marks)

b. Determine the speed travelled at  $5^{\circ}\text{C}$ . (2 marks)

- c. Calculate the time taken for the boy to hear the echo. (2 marks)

16. a) Define electric current (1mks)

1. The figure below shows an electric circuit with two bulbs  $B_1$  and  $B_2$  which are identical.

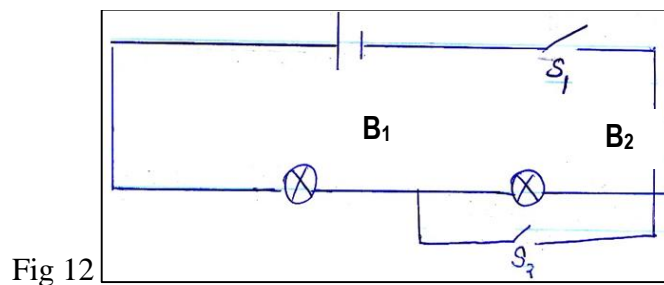


Fig 12

Explain what happens to the bulbs when

- uu.  $S_1$  only is closed (2mks)

- vv.  $S_1$  and  $S_2$  are closed (2mks)

- e. The figure below shows an electric circuit. Use the circuit to determine the current supplied by the battery (3mks)

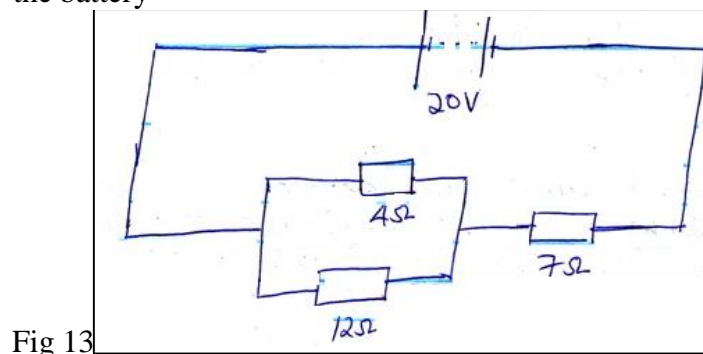


Fig 13

7. a) Figure 14 below shows a series of wave fronts one wavelength apart approaching a gap between barriers in ripple tank.



FOR MARKING SCHEMES CALL/TEXT/WHATSAPP

0705525657/0770195807

Figure 14

On the same diagram, show what happens when the waves pass through the gap. (1 mark)

xxii. Some plane water waves were produced in a ripple tank. They pass from a region of deep water into a region of shallow water. Figure 15.0 shows what the waves look like from above.

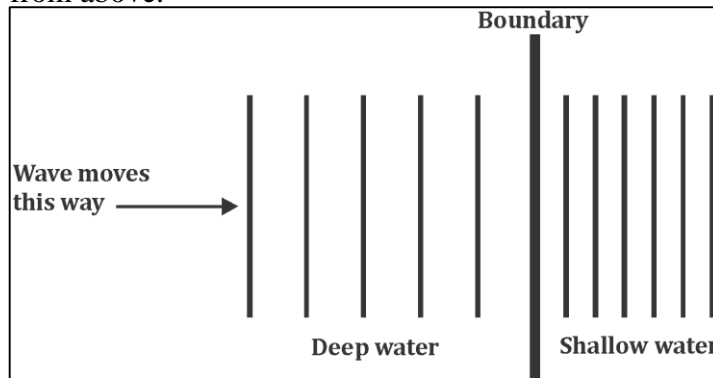


Fig 15

State what happens at the boundary to

2. the frequency of the waves (1 mark)
3. the speed of the waves (1 mark)
4. the wavelength of the waves (1 mark)

8. (a) State **three** factors that affect the strength of an electromagnet. (3marks)

21. In the set up **below**, the suspended metre rule is in equilibrium balanced by the magnet and the weight shown. The iron core is fixed to the bench:

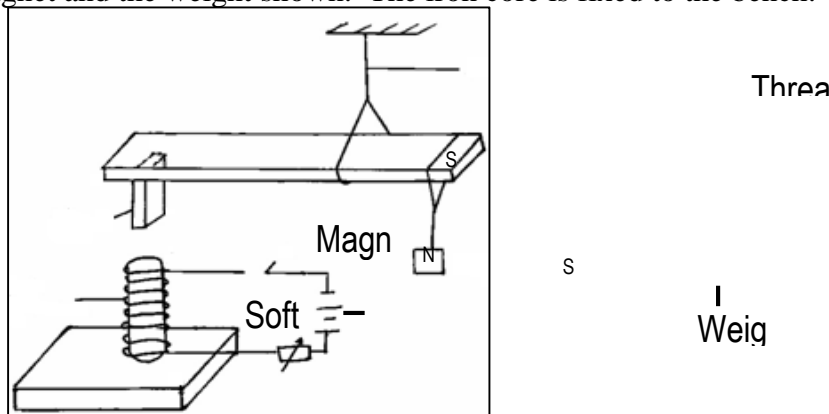


Fig 16

i. State and explain the effect on the metre rule when the switch S, is closed. (2marks)

ii. What would be the effect of reversing the battery terminals? (1 mark)

22. The figure **below** shows two parallel current carrying conductors **A** and **B** placed close to each other. The direction of the current is into the plane of the paper.



On the same figure;

i. Sketch the magnetic field pattern. (1 mark)

ii. Indicate the force  $F$  due to the current on each conductor. (1 mark)