

# FORM 2 END TERM EXAMS

**By AMOBI SOFT COPY PUBLISHERS**

For the Marking Schemes [WhatsApp/sms/call](https://www.whatsapp.com/channel/0029va6131439)

**Sir Obiero Amos @ 0706 851 439**

*Subjects Tested include:* Maths, Eng, Kisw, Bio, Chem, Phy, Geog, Hist,  
CRE, Agric & B/S.

Prefer calling to receive the M.S urgently



**By SIR OBIERO AMOS  
RESOURCES**

&



**AMOBI SOFT COPY PUBLISHERS**

Transparency, Honesty and Accountability Defined

KCSE COMPILED QUESTIONS 1996-2016 AVAILABLE @

Zero Cost. **Quality Well Summarized Notes f1-f4, Acted**

videos for set books Available etc. **Call us on 0706 851 439**

Name: ..... Adm no ..... Class.....

443/1

**AGRICULTURE FORM TWO**

**END OF TERM ONE**

**TIME: 2 HOURS**

**INSTRUCTIONS TO CANDIDATES:**

- Answer **ALL** the questions
- Answers should be written in the spaces provided

1. a) Give the meaning of the following terms.

i) Plantation farming

(1mk)

.....

...

ii) Large scale farming

(1mk)

.....

.....

.....

(b) Give two reason why ranching is important in the arid and semi- arid areas of Kenya.

(2mk)

.....

...

.....

...

.....

...

2.Name **two** processes through which carbon is returned to the atmosphere in the carbon cycle

(2mk)

.....  
.....  
.....  
.....

3. Name **two** methods of layering.  
(2mk)

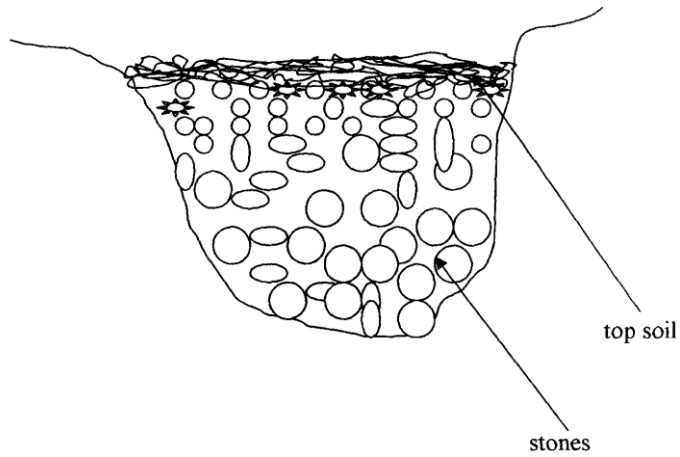
.....  
.....  
.....  
.....

4. A farmer is to apply a compound fertilizer 20-30-0 on a vegetable plot measuring 5m long by 4m wide at the rate of 200kg/ha. Calculate the amount of fertilizer the farmer requires for the plot (show your working).  
(3 marks)

5. State **four** advantages of drip irrigation. (4 marks)

.....  
.....  
.....  
.....  
.....  
.....  
.....

6. Study the diagram below then answer the questions that follow:



a) Identify the method of drainage above.

(1mk)

.....  
.....  
.....

b) State other **three** methods used to drain swampy areas.

(3mks)

.....  
.....  
.....  
.....  
.....  
.....  
.....

c). Give **four** importance of drainage.

(4mks)

.....  
.....  
.....  
.....  
.....  
.....  
.....

7. State the correct use of each of the following tools.

(2mks)

a) Tin snip

.....

b) Cold chisel

.....

8. Give **two** ways in which agriculture offer employment.

(2

marks)

.....  
.....  
.....  
.....

9. Distinguish between minimum tillage and sub-soiling as used in agricultural production

(2mks)

.....  
.....  
.....  
.....  
.....

10. Name **three** types of farm records that a sheep farmer should keep

(3mks)

.....  
.....  
.....  
.....  
.....

11. Name **three** vegetative materials used in propagation of pineapples

(3mks)

.....  
.....

.....  
.....  
.....  
.....

12. Give **three** disadvantages of mulching in crop production (3 mks)

.....  
.....  
.....  
.....  
.....  
.....

13. State **four** factors that influence spacing in crops. (4 marks)

.....  
.....  
.....  
.....

14. State **four** positive effects of high temperatures on crop production. (4mark)

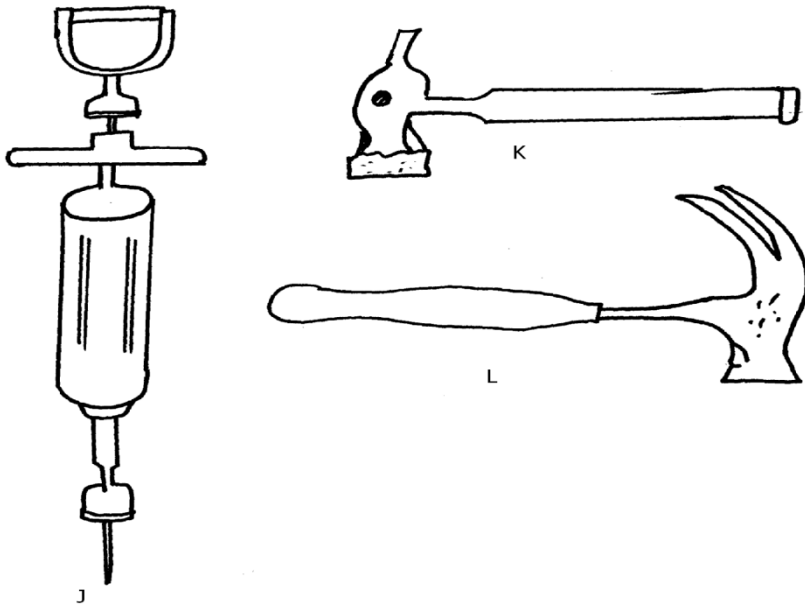
.....  
.....  
.....  
.....  
.....  
.....  
.....

15. Give **four** ways of water harvesting in a farm. (4 marks)

.....  
.....

.....  
.....  
.....  
.....

16. Identify the tools and equipment drawn below.



i) Identify tools/equipment J, K and L  
(3 mks)

(3

J.....

....

K.....

....

L.....

....

ii) State the use of J and K  
(2mks)

J.....

..

K.....

..

iii) Give **one** functional similarity between K and L.

(1mk)

.....  
.....  
.....

iv) Give **two** maintenance practices that should be carried out in too J.

(2mks)

.....  
.....  
.....  
.....

17. Explain **six** management practices that can be carried out by a farmer to maintain soil fertility on his farm. (12 marks)

.....  
.....  
.....  
.....  
.....  
.....  
.....  
.....  
.....  
.....  
.....  
.....  
.....  
.....  
.....  
.....  
.....  
.....  
.....  
.....  
.....



.....  
.....  
.....  
.....  
.....  
.....  
.....  
.....  
.....  
.....  
.....  
.....  
.....

Name: ..... Adm no ..... Class.....

231

**BIOLOGY FORM TWO**

**END OF TERM ONE**

**MARCH/APRIL**

**TIME: 2 HOURS**

**INSTRUCTIONS TO CANDIDATES:**

- Answer **ALL** the questions
- Answers should be written in the spaces provided

1. Define the following terms.

(2mks)

i) Taxon

.....  
.....  
.....

ii) Taxonomy

.....  
.....  
.....

2. A donkey and a horse can breed and produce a young one called a mule. Explain why they do not belong to the same species.  
(2mks)

.....  
.....  
.....  
.....

3. Give **one** reason for each of the following operations in microscopy work.  
(3mks)

i) Adding a drop of iodine solution.....

.....  
.....

ii) Covering the specimen with a cover slip.

.....  
.....  
.....

iii) Cutting the specimen using a sharp blade.

.....  
.....  
.....

4. The table below shows the concentration of mineral A and B in sea water and in the cell sap of a certain sea weed.

<i>Mineral</i>	<i>Concentration in sea water in (ppm)</i>	<i>Concentration in the cell sap in (ppm)</i>
<b>A</b>	16	108
<b>B</b>	39	11

a) Suggest the physiological process by which mineral A and B were absorbed by the sea weed.

.....(2mks)

b) State and explain the mineral that would fail to be absorbed if the sea weed was treated with respiratory poison.  
(2mks)

.....  
..

5. Differentiate between fats and oils.

(2mks)

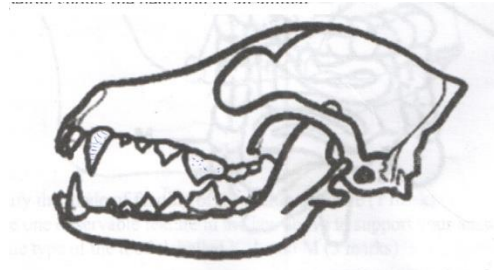
.....  
.....  
.....  
.....

6. Name the element contained in all proteins.

(1mk)

.....  
.....  
.....

7. The diagram below shows the dentition of an animal.



i) Identify the mode of feeding of the animal with the dentition above.

(1mk)

.....  
.....  
.....

ii) Give **two** reasons for your answer in (i) above.

(1mk)

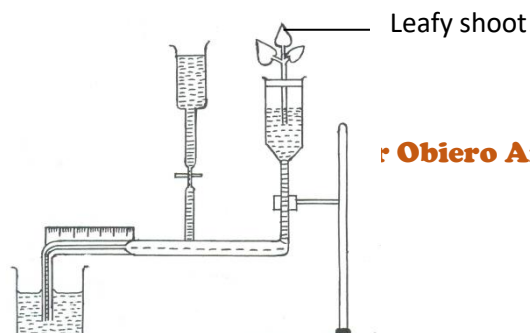
.....  
.....  
.....  
.....

8. State **two** functions of mucous produced in the gastro-intestinal tract.

(2mks)

.....  
.....  
.....  
.....

9. The diagram below shows a set-up used to investigate a certain process in plants.



i) Identify the process being investigated.  
(1mk)

.....  
.....  
.....

ii) Name the equipment represented by the diagram above.  
(1mk)

.....  
.....  
.....

iii) Give **two** precaution that should be taken when setting up this experiment.  
(2mks)

.....  
.....  
.....  
.....  
.....

10. Explain the following concepts:

i) Some plants fold their leaves in dry weather.  
(2mks)

.....  
.....  
.....  
.....  
.....  
.....

ii) Leaves of plants from arid areas have fewer stomata on the upper leaf surface.  
(2mks)

.....  
.....  
.....  
.....  
.....

11. A lady had her veins swollen at the back of the legs. The swellings are painful.

a) Name this  
condition.....(1mk)

b) What causes the  
condition?.....(1mk)

c) How can the condition be corrected?  
.....(1mk)

12. State **three** differences between open and closed circulatory system.  
(3mks)

.....  
.....  
.....  
.....  
.....

13. In what chemical form is oxygen transported in the blood.  
(1mk)

.....  
.....  
.....

14. Give **two** protective roles of mammalian blood.  
(2mks)

.....  
.....  
.....  
.....  
.....

15. Name:

a) A vitamin that is needed in blood clotting.....(1mk)

b) A metal ion needed in blood clotting.  
.....(1mk)

c) An anti-clotting factor found in mammalian blood that prevents blood from clotting before an injury.  
(1mk)

.....  
.....

d) Two enzymes needed in blood clotting.  
(2mks)

.....  
.....  
.....  
.....  
.....

16. State **two** ways in which blood clotting is beneficial to humans.  
(2mks)

.....  
.....  
.....

17. State one:-

i) Advantage of people having blood group O.  
(1mk)

.....  
.....  
.....

ii) Disadvantage of people having blood group O.  
(1mk)

.....  
.....  
.....

18. What is gaseous exchange?  
(2mks)

.....  
.....  
.....

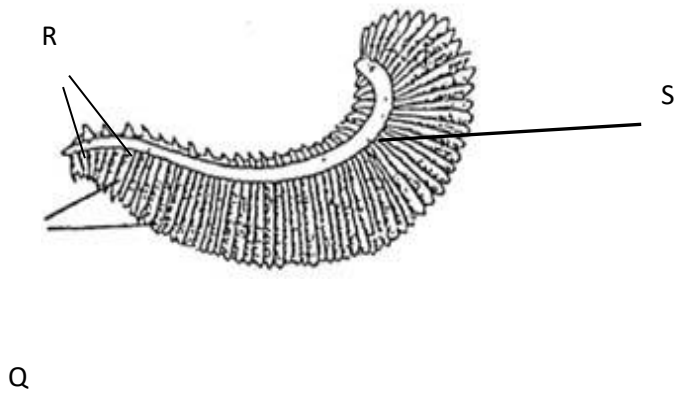


.....  
.....

19. Give two reasons why gaseous exchange is important in human beings.  
(2mks)

.....  
.....  
.....  
.....  
.....

20. The diagram below shows the structure of a gill of a bony fish.



a) Name the structure labeled Q, R and S.  
(3mks)

Q

.....

R.....

...

S

.....

b) State the function of structure Q, R and S.

(3mks)

Q

.....

R

.....

S

.....

.

c) Give **four** ways in which structure Q is adapted to its functions.

(4mks)

.....  
.....  
.....

21. State **two** theories that explain the mechanisms of opening and closing of the stomata.

(2mks)

.....  
.....  
.....  
.....  
.....

22. Name the structure or surfaces involved in the gaseous exchange in the following organisms.

(4mks)

a) Fish

.....

b) Insects.....

.....

c) Plant.....

.....

d) Amoeba.....

.....

23. State **three** factors that affect the rate of breathing in human beings.  
(3mks)

.....  
.....  
.....  
.....  
.....

24. Describe what happens during the light stage of photosynthesis.  
(3mks)

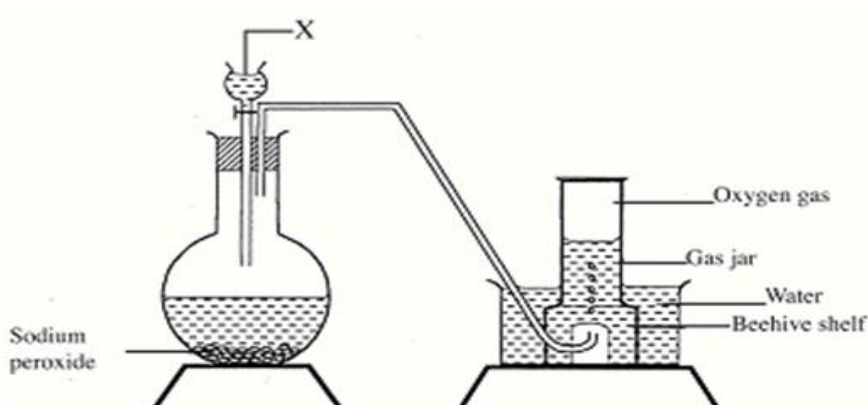
.....  
.....  
.....  
.....  
.....  
.....

**FORM II CHEMISTRY**  
**END OF TERM 1 EXAM**  
**TERM I**

**NAME:** ..... **ADM NO:** ..... **CLASS:**.....

Answer all the questions in the spaces provided.

1) The set up below can be used to prepare oxygen gas. Study it and answer the questions that follow.



a) Identify substance X. 1mk

b) What property of oxygen makes it possible for it to be collected as shown in the above set up? 1mk

c) State **two** uses of oxygen. 2kms

2) Describe an experimental procedure that can be used to extract oil from nut seeds. 3mks

3) In terms of structure and bonding, explain the following observations:

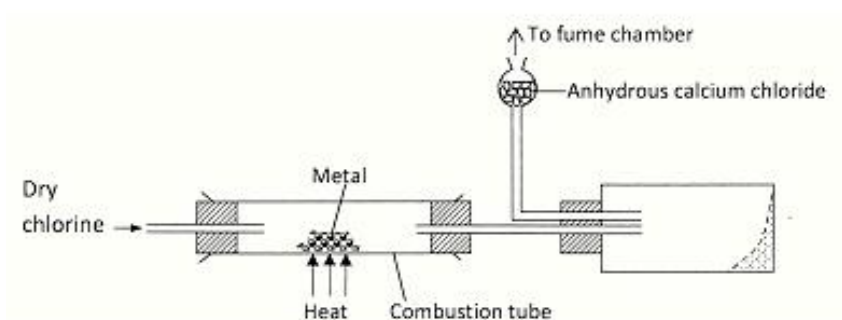
a) The melting point of water  $H_2O$  is higher than that of  $H_2S$ . 2mks

b) Melting point of chlorine is lower than that of sulphur. 2mks

4) a. Define the term salt. 1mk

b. Apart from direct synthesis name two other methods of salt preparation. 2mks

c. The diagram below illustrates a method of preparing salts by direct synthesis.



d. This method can be used to prepare either aluminum chloride or iron (III) chloride. Explain. 1mk

e. What is the purpose of anhydrous calcium chloride? 1mk

5) Define the following terms. 3mks

a) Normal salt

b) Efflorescent salts

c) Deliquescent salts

6) a. What is meant by an allotrope? 1mk

b. Give two allotropes of carbon. 2mks

7) The grid below is part of the periodic table. Use it to answer the questions that follow. (The letters are not the actual symbols of the elements).

			A		B	C	
D			E	F		G	
						H	

a. Which is the most reactive non-metallic element shown in the table? Explain. (2 mks)

b) (i) Write the formula of the compound formed when element A reacts with element B. (1 mk)

(ii) Name the bond type in the compound formed in b (i) above. (1 mk)

c) (i) What is the name given to the group of elements where C, G and H belong? (1 mk)

d) The melting points of elements F and G are  $1410^{\circ}\text{C}$  and  $-101^{\circ}\text{C}$  respectively. In terms of structure and bonding, explain why there is a large difference in the melting points of F and G. (2 marks)

e) D forms two oxides. Write the formula of each of two oxides. (1 mark)

f) J is an element that belongs to the 3<sup>rd</sup> period of the periodic table and is a member of the alkaline earth elements. Show the position of J in the grid. (1 mark)

8) i) Define the term isotope. 1mk

ii) The table below gives the number of electrons, protons and neutrons in substances X, Y and Z Study it and answers the questions that follow.

Substance	Electrons	Protons	Neutrons
X	10	10	10
Y	10	8	10
Z	8	8	8

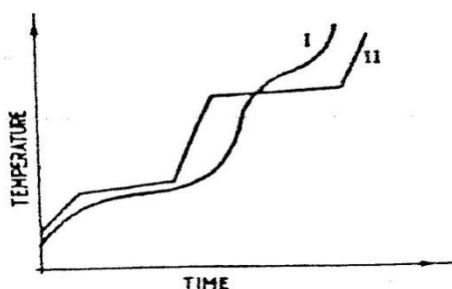
a) Which letter represents an ion? (1 mark)

b) Which of the substances are isotopes? Give a reason. (2 marks)

c) Show the electron arrangement of Y 1mk

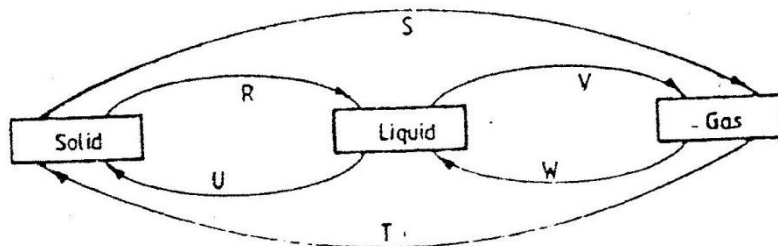
9) a. What is an impurity? 1mk

b. The curve below represents the variation of temperature with time when pure and impure samples of a solid were heated separately.



Which curve shows the variation in temperature for the pure solid? Explain. 2mks

10) The diagram below shows the physical state of matter. Study it and answer the questions that follow.



i. Identify the processes R, V, w and U. 4mks



R  
V  
W  
U

ii. Name the process S and T. 1mk

iii. Name two substances which can undergo the process represented by S and T. 2mks

11) Define the term ionization energy. 1mk

12) The table below gives the energy required to remove the outermost electron for some group I elements.

Element	I	II	III	IV
Ionization Energy kJmol <sup>-1</sup>	494	418	519	376

Arrange the elements in order of their reactivity starting with the most reactive. 2mks

13) The table below shows some properties of substances C,D and E. Study it and answer the questions that follow.

Substance	M.P (OC)	Solubility in water	Electrical solid state	Conductivity molte stated
E	-39	Insoluble	Good	good
D	1610	Insoluble	Poor	poor
E	801	Soluble	Poor	good

Select substance

a. With a giant molecular structure. 1mk

b) That has ionic bonding. 1mk

c) That is a metal. 1mk

(1mk)

14) An element Y has the electronic configuration 2.8.5

a) Which period and group of the periodic table does the element belong? 2mks

(i) Group

(ii) Period

b) Write electron arrangement of the ion of Y. 1mk

c) Explain the difference between the atomic radius of element Y and its ionic radius. 2mks

15) The table below shows the P<sup>H</sup> values of solutions I, II, III and IV.

Solution	I	II	III	IV
p <sup>H</sup>	2	7	11	14

(a) Which solution is likely to be that of: 3mks

(i) Calcium hydroxide

(ii) Sodium chloride

(iii) Potassium hydroxide

16) a. What is the chemical name for rust? 1mk

b. State three conditions necessary for rusting. 3mks

c. State three methods of preventing rusting. 3mks

17) Write an equation to show the effect of heat on: 3mks

(a)  $\text{NaNO}_3$

(b)  $\text{Zn}(\text{NO}_3)_2$

(c)  $\text{AgNO}_3$

## ENGLISH COMPOSITION FORM 2

**END OF TERM ONE**

**NAME:** .....**ADM NO:** .....**CLASS:**.....

**FUNCTIONAL WRITING (20MKS)**

1.You went out for games, the teacher gives you permission to do some shopping, this permission is for only 20 minutes but you exceed the limited time and you find the teacher and the other students have been waiting for you for almost one hour. Write an apology letter giving a reason as to why you delayed at the shopping center. (20mks)

**ENGLISH COMPOSITION FORM 2**

**END OF TERM ONE**

**NAME:** .....**ADM NO:**

.....**CLASS:**.....

**FUNCTIONAL WRITING (20MKS)**

1.You went out for games, the teacher gives you permission to do some shopping, this permission is for only 20 minutes but you exceed the limited time and you find the teacher and the other students have been waiting for you for almost one hour. Write an apology letter giving a reason as to why you delayed at the shopping center. (20mks)

**ENGLISH COMPOSITION FORM 2**

**END OF TERM ONE**

**NAME:** .....**ADM NO:**

.....**CLASS:**.....

**FUNCTIONAL WRITING (20MKS)**

1.You went out for games, the teacher gives you permission to do some shopping, this permission is for only 20 minutes but you exceed the limited time and you find the teacher and the other students have been waiting for you for almost one hour. Write an apology letter giving a reason as to why you delayed at the shopping center. (20mks)

## ENGLISH COMPOSITION FORM 2

### END OF TERM ONE

NAME.....ADM NO: .....CLASS:.....

#### FUNCTIONAL WRITING (20MKS)

1.You went out for games, the teacher gives you permission to do some shopping, this permission is for only 20 minutes but you exceed the limited time and you find the teacher and the other students have been waiting for you for almost one hour. Write an apology letter giving a reason as to why you delayed at the shopping center. (20mks)

## ENGLISH FORM 2

### END OF TERM ONE,

NAME:.....ADM NO:.....CLASS: .....

#### ANSWER ALL QUESTIONS IN THE SPACES PROVIDED

Use the most appropriate word to fill in each blank spaces in the following passage(10mks)

Okonkwo was tall \_\_\_\_\_ huge and his bushy eyebrows and wide nose gave him a \_\_\_\_\_ severe look. He breathed \_\_\_\_\_ and it was said that, when he slept, his wives and \_\_\_\_\_ in the outer houses could \_\_\_\_\_ him breath. when he \_\_\_\_\_ was going to pounce on somebody. And he did pounce on people quite often.he \_\_\_\_\_ a slight stammer and whenever he was angry and could not get his words out quickly enough ,he would \_\_\_\_\_ his fist .He had \_\_\_\_\_ patience with unsuccessful men. He had no patience with his father.

#### B.(i)identify five pairs of words that have the same pronunciation from the list below(5mks)

Whale	rain	pause
Way	tail	draft
Why	missed	wail
Reign	mist	ore
Pose	air	till
Bawl	ball	draught

#### (ii) Identify the silent in the consonant in the following word (5mks)

- a) Wednesday
- b) Buffet

- c) Resign
- d) Isle
- e) Wrist

### C.COMPREHENSION

*Read the passage below and answer the questions that follow (10mks)*

#### **Chief Ullini's daughter.**

Every dark cloud were gathering in the late afternoon sky. There was stillness in the air, a stillness that threatened a storm.

The boatman who rowed people across the lake was making fast his boat when a young man and a woman approached him in a great hurry. They were desperate to cross the lake, they said, and urged him to take them. He shook his head and pointed to the sky he told them that the storm was soon calming and that they should wait until it blew over. It would be dangerous to take his small rowing boat out to the lake.

All the time he was talking, the young couple were nervously looking behind them. Simon, the young man pleaded with the batman to take them and offered him purse of silver coins. He told the boatman that he and the Elizabeth, the young woman, were in love and were determine to marry. Her father was chief ullini and he wanted to marry Elizabeth off to a neighboring chief, a man she did not love. The chief was at that moment pursuing them. They must cross the lake to be safe.

The boatman knew of chief ullini fiery temper and how he would kill the young man if he caught him he could also see how very much in love the young couples were .Just then the boatman son Eric came. He was striking young man who helps his father , he was told the story of the young couple and sympathized with the plight. The young man spoke up. She would rather, she said, face the turbulent water than meet the wrath of the angry father. Tears weld up n her eyes, never, she protested, would she marry a man she didn't love.

The boatman was touched by her a appeal and told her son he had decided to row the couple across not for money, but because he admired their talent and love Eric looked anxiously at his father. A storm was certainly coming , he warned .it will be far too risky.

However, his father was already herding his passenger into his boat. when they were both seated he untied the rope and made to get in himself. Suddenly , Eric pulled his father away and leapt into the boat took up the Oars and began to row away.

His father ,when he had recovered his breath ,shouted for his son to come back .His wife, on hearing the shout went down to the lakes edge .seeing her son rowing away over the stormy water, she screamed for him to return .The threatening wind whipped her words away.

Towards the lake a group of armed men came. It was the chief with his warriors. He was angry, but when he saw his daughter on the lake being tossed by angry waves he was terribly afraid .He bellowed that he forgive them and that they should return.

It was in vain as he shouted the waves capsized the little craft and its three young occupants were drowned as the old people watched.

#### **Comprehension questions.(10mks)**

1. What was the boatman doing when the young couple went to him? (1mk)
  
2. . Why did the boatman initially refuse to take the young man and woman across the lake. (2mks)

- 3 Why was the couple in a hurry to cross the lake ?(2mks)
  
4. Explain why the boatman decided to row the couple across the lake in spite of the bad weather. (2mks)
  
5. Why did Chief Ullin pursue the young couple? (2mks)
  
6. Never she protested, would she marry a man she did not love. (Write the words that were actually spoken by Elizabeth ) (1mk)

**Rewrite the following sentences to express future.**

- i. The student (open) school tomorrow.(present simple)
  
- ii. Judy was not at the concert.(use will+be)
  
- iii. I( go ) visit my uncle this afternoon.
  
- iv. The teacher (talk) to you about subject choices later.(will+be)

v. They (stop) by your house later.(use be + ing)

**Order the adjectives in the following sentences.**

- I. She wore a \_\_\_\_\_ dress.(evening, red, silk).
- II. Tirop wanted his \_\_\_\_\_ boots. (French, ski)
- III. The house I bought has \_\_\_\_\_ furniture.(old, brown)
- IV. She got a \_\_\_\_\_ costume. (nylon, black, swimming )
- V. He wore a \_\_\_\_\_ tie on his wedding day.( woolen , blue).

**Oral literature. (10mks)**

1. Explain any **five** types of songs.



# GEOGRAPHY F2 END TERM 1 EXAMS

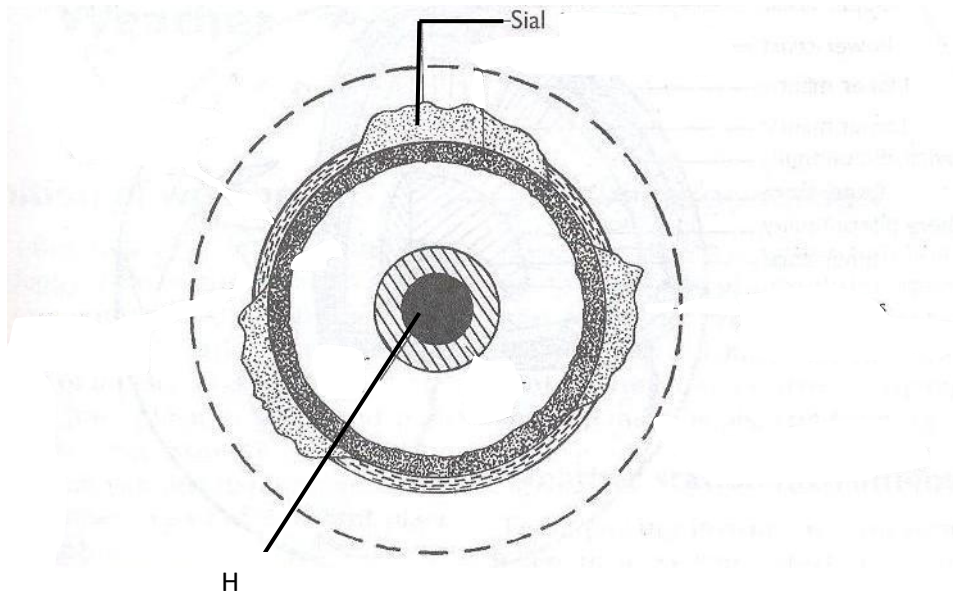
NAME.....ADM NO.....CLASS.....

*Answer all the questions*

1. (a) What is the relationship between Geography and Chemistry? (2mak)

(b) The diagram below shows the internal structure of the earth.

G



(i) Name the parts marked G and H. (2 marks)

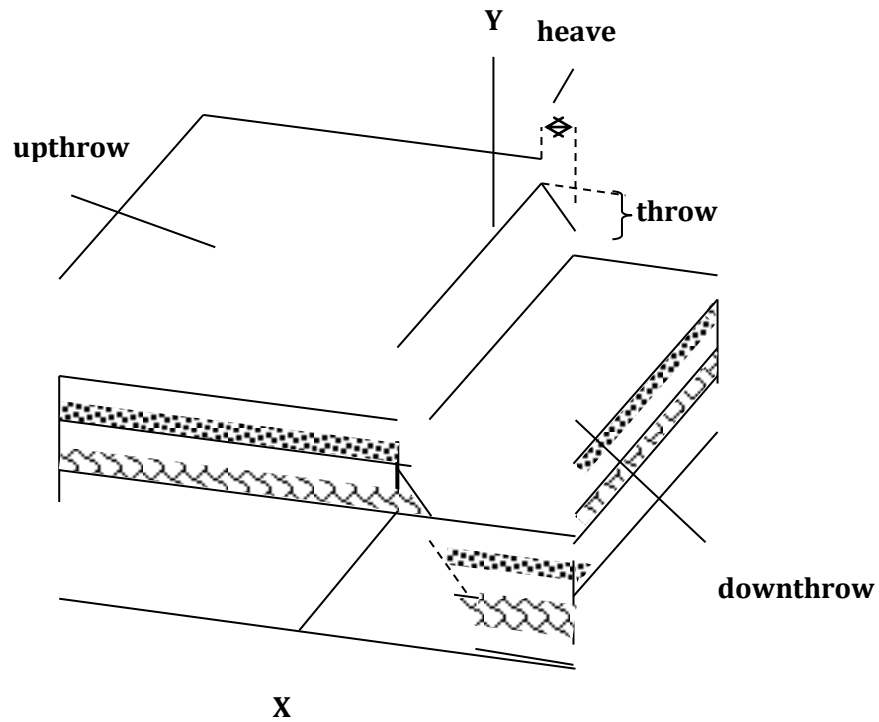
G -

H -

(ii) Name the dominant mineral in the mantle. (1 mark)

2. Differentiate between absolute and relative humidity. (2 marks)

3. The diagram below shows some features formed by faulting. (2 marks)



- (a) Name the parts marked X and Y.

X -

Y -

- (b) State *three* effects of faulting on drainage of an area. (3 marks)

4. (a) Identify *two* scales used to measure the intensity of an earthquake (2 mark)

(b) Give *three* major earthquake zones of the world. (3 mark)

(c) Explain *three* economic significance of rocks in Kenya. (3 mark)

(d) Students carried out a field study on rocks around their school.

(i) State *two* importance of stating the objectives for the study. (2 marks)

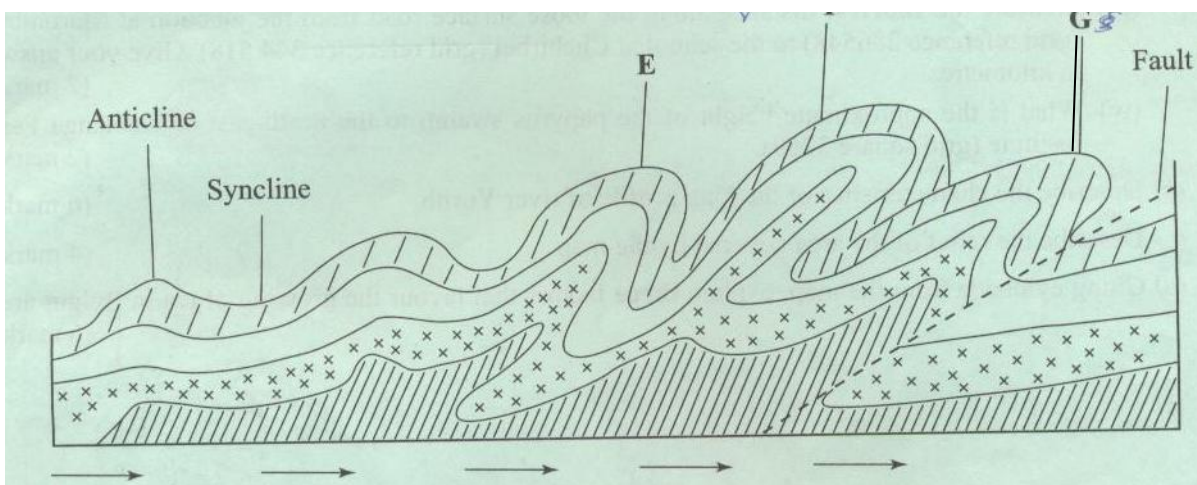
(ii) Give *three* reasons why they prepared a route map of the study (3 marks)

(iii) Give *three* activities that the students were involved in during the field study. (3 marks)

5 (a) (i) What is an orogeny? (2 marks)

(ii) Give *two* factors that influence the folding process of rocks. (2 marks)

(b) The diagram below shows some types of folds. Use it to answer the question



(i) Name the types of folds marked E and (2marks)

E

F

(ii) Describe how an overthrust fold is formed. (4 marks)

(c) Name the countries in which the following fold mountains are found.

(i) Atlas (1 mark)

(ii) Alps (1 mark)

(iii) Himalayas (1 mark).

(iv) Andes (1 mark)

(d) (i) Apart from fold mountains, name *three* other features resulting from folding. (3mks)

(ii) Explain *four* ways in which fold mountains influence climate .(8mks)

6. (a) Define the term planet (2mks)

7. Differentiate between relative humidity and absolute humidity. (2mks)

8. With the aid of a well labeled diagram, describe how aerographic rain is formed. (7mks)

Jina.....Darasa:.....Nambari:...



MTIHANI WA MWISHO WA MUHULA WA KWANZA

KISWAHILI INSHA

MUHULA WA KWANZA

KIDATO CHA PILI

**Andika ratiba ya siku ya wazazi itakayofanyika shuleni kwenu. (alama 20)**

NAME: ..... ADM NO: ..... CLASS: .....  
**FORM TWO HISTORY**  
**END OF TERM 1 EXAM**  
**TIME: 2 HOURS**

Answer all the questions in the spaces provided.

**SECTION A: (40 MARKS)**

**Answer all the questions from this section.**

1. Name two sources of history of Kenyan communities during pre-colonial period. (2 mks)
  
2. Identify three similarities between early agriculture in Mesopotamia and Egypt. (3 mks)
  
3. State two reasons why the Portuguese were able to conquer the coastal towns by 1500AD.(2 mks)
  
4. State two ways in which mission stations in Kenya promoted to the spread of Christianity.(2 mks)
  
5. Give two reasons that can make a registered person to loose citizenship in Kenya. (2 mks)
  
6. Identify three ways in which education system in Kenya promotes National unity (3 mks)

7. State three ways in which poor transport systems have contributed to food shortage in Africa. (3 mks)
8. Give four effects of telecommunication in modern society. (4 mks)
9. Name any two early sources of energy. (2 mks)
10. Give any three limitations of using fire and smoke signals in communication. (3 mks)
11. State three roles of tuaregs in Trans-Saharan trade. (3 mks)
12. Identify the two examples of regional trade. (2 mks)
13. Identify any two factors that may limit national unity in Kenya. (2 mks)

14. Give two reasons why the Portuguese build Fort Jesus. (2 mks)

15. State two factors that made the Akamba to participate in long distance trade during 19<sup>th</sup> century. (2 mks)

16. Identify the three species of homo sapiens. (3 mks)

**SECTION B: (30 MARKS)**

**Answer any two questions.**

17. (a) Identify five ways in which slaves were acquired during Trans-Atlantic trade. (5 mks)

(b) What were the results of Trans-Atlantic trade in West Africa? (10 mks)

18. (a) What factors made early man to domesticate crops and animals. (3 mks)

(b) Explain the causes of food shortage in third world countries. (12 mks)

19. (a) Why did the industrial revolution take place in Britain ahead of other European countries? (5 mks)

(b) Explain five ways in which development of iron technology affected African communities. (10 mks)

Jina.....Darasa:.....Nambari:...

**MTIHANI WA MWISHO WA MUHULA WA KWANZA**

**KISWAHILI**

**MUHULA WA KWANZA –**

**KIDATO CHA PILI**

**MAAGIZO**

Jibu maswali yote.

**1. UFAHAMU**

*Soma makala yafuatayo kisha ujibu maswali.*

Changamoto kubwa inayowakabili watu wengi katika mataifa yanayoendelea ni suala la chakula. Suala hili linaweza kuangaliwa katika sawia mbili tofauti. Kuna tatizo linalofungamana na uhaba wa chakula chenyewe. Uhaba huu unaweza kutokana na utegemezi mkubwa kwa zaraa kama nyenzo kuu ya uzalishaji wa chakula.

Zaraa katika mataifa mengi hususan yanayoendelea, hutegemea mvua. Kupatikana kwa mvua huathiriwa na mabadiliko ya tabianchi ulimwnguni. Matendo na amali za watu kama ukataji wa miti na uchafuzi wa mazingira huwa na athari hasi kwenye tabianchi hiyo. Mabadiliko ya tabianchi huweza kuvyaza ukama kutokana na **ngambi ya mvua**.

Kibinimethali kutokea wakati mafuriko yanapotokea na labda kuyasomba mazao mashambani na kusababisha baa la njaa. Hali hizi mbili husababisha matatizo makubwa ya chakula na kuathiri pakubwa suala zima la usalama wa chakula. Ili kuzuia uwezokano wa

kuwepo kwa shida hii, pana haja ya kuwepo kwa mikakati na sera za kuhakikisha kuna usalama wa chakula. Kwa mfano, pana haja ya kukuza kilimo cha umwagiliaji ili kuepuka **adha** inayosababishwa na ukosefu wa mvua. Kwa upande mwingine, sharti zichukuliwe hatua mufidi za kuzuia na kupambana na athari za gharika.

Changamoto nyingine inahusiana na usalama wa chakula chenyewe. Chakula kilichosibikwa na vijasumu au kwa njia nyingine ile huweza kumdhuru anayehusika. Msibiko wa chakula unatokana na vyanzo tofauti. Mathalan uandalizi wa chakula kilichochofuliwa na choo, kutozingatia mbeko za usafi, uandaaji wa chakula na kukiweka katika hali ya uvuguvugu kabla ya kukipakua – hali inayochochea ukuaji wa viini na ulaji wa chakula kisichoandaliwa vyema.

Ili kuepuka uwezekano wa kuathirika, pana haja ya kuzingatia usafi wa chakula na uandalizi unaofaa. Fauka ya hayo, vyombo cya uandalizi view safi, kanuni za usafi zifuatwe, upikaji na uandaaji uwe kamilifu. Hali hii isipozingatiwa, siha za raia wenyewe zitaathirika pakubwa.

### **Maswali.**

1. Taja aina mbili za kuangalia suala la chakula katika mataifa yanayoendelea.  
(alama 2)
2. Taja hatua mbili zinazoweza kuchukuliwa kupambana na tatizo la chakula.  
(alama 2)
3. Eleza jinsi nne tofauti namna chakula kinavyoweza kuwa si salama?  
(alama 4)

4. Kwa nini ni rahisi kukipakua chakula baada ya kukiandaa tu? (alama 1)

5. Ni mapendekezo gani anayoyatoa mwandishi kuhakikisha kuwa chakula kinafaa? (alama 4)

### **MATUMIZI YA LUGHA**

1. Kwa kutoa mifano eleza tofauti kati ya: (alama 2)

i. Silabi funge

ii. Silabi wazi

2. Onyesha sauti zenye sifa zifuatazo: (alama 2)

i. Kipasuo cha ufizi

ii. Kikwamizo cha kaaka laini

3. Tambua aina ya nomino katika sentensi zifuatazo. (alama 2)

i. Mchanga hufanya miti kumea.

4. Bainisha mofimu katika kitenzi. (alama 2)  
Kilipikika
5. Tambua vivumishi katika sentensi ifuatayo na ueleze ni vya aina gani. (alama 2)  
i. Mtoto wake ameng'oka jino.  
  
ii. Msemo wenye tafsida hupendwa.
6. Andika kinyume cha: (alama 1)  
Tulinunua nguo aliizozianika jana.
7. Nomino 'uki' iko kwenye ngeli gani. (alama 1)
8. Ainisha vitenzi kwenye fungo zifuatazo: (alama 3)  
i. Yatakuwa yangali yanakoma.  
  
ii. Maria na Atieno ni wanafunzi watiifu.
9. Onyesha vielezi katika sentensi zifuatazo. (alama 2)  
i. Rais ametutembelea mara sita mwaka huu.



- ii. Nendeni haraka shuleni.
10. Eleza maana inayojitokeza kwenye sentensi ifuatayo. (alama 1)
- i. Waiteni watu wale.
11. Tumia kiwakilishi kisisitizi kutungia sentensi ya wingi wakati uliopita. (alama 2)

## **ISIMU JAMII**

### **Soma makala yafuatayo kisha ujibu maswali.**

Haya ng'ara ... Ng'ara leo! Nguo motomoto. Ng'ara leo kwa bei rahisi. Hamsini hamsini shati. Kuona ni bure. Bure kwa bure. Shika mwenyewe ujionee. Bei nafuu. Bei ya starehe. Haya, haya. Usikose mwanangu! Hamsa! Hamsa! Fifty!Hamsa! Fifty! Hamsa na nyingine.

### **Maswali.**

- a. Bainisha sajili ya mazungumzo haya. (alama 1)
- b. Eleza sifa nane za sajili hii kwa kurejelea kifungu hiki. (alama 4)

**FASIHI SIMULIZI.**

a. Fafanua maigizo. (alama 2)

b. Ainisha kipera cha maigizo. (alama 4)

c. Eleza sifa za maigizo. (alama 4)

**END OF TERM ONE  
PHYSICS FORM TWO**

**NAME: .....ADM NO: .....CLASS:**

.....

**INSTRUCTIONS.**

**1. Answer all questions in the spaces provided below.**

1. Define the following terms giving appropriate examples. (4mks)

a) Magnetic materials-

b) Non-magnetic materials-

2.  $0.01\text{cm}^3$  of oil spreads out on water to form a patch of diameter  $28\text{cm}$ . estimate the diameter of an oil molecule, and express your answer correct to 3s.f.g. (3mks)

3. A uniform meter rule with a mass of  $200\text{g}$  suspended at zero mark is pivoted at the  $22.0\text{cm}$  mark. Calculate the mass of the rule. (4mks)

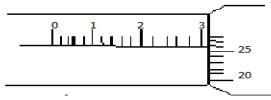
4. State **three** uses of magnets. (3mks)

5. Explain the following. (4mks)

a) Principle of moments of a force.

b) Moment of a force is a vector quantity.

6. The micrometer screw gauge below has a zero error of  $-0.15$ . Determine the final Reading of the instrument. (3mks)



7. State **two** factors that affect the centre of gravity. Explain each briefly. (4mks)

8. State **two** practical applications of the C.O.G. (2mks)

9. A solid weighs 36N on the Moon. The force due to gravity on the moon is 1.7N/Kg. Determine the mass of the solid. (3mks)

10. Use simple sketches of a cone to illustrate the three states of Equilibrium. (3mks)

11.a) Give a reason why water is not suitable as a barometric liquid. (2mks)

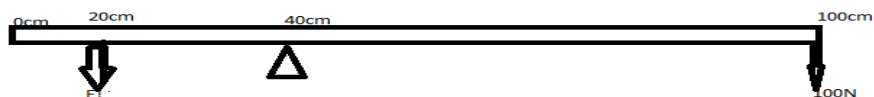
b) Explain the application of 11(a) above. (1mk)

12. Determine the density in SI units of a solid whose mass is 40g measuring 30cm long, 4cm wide and 3cm thick. (4mks)

14.a). Sketch **two** diagrams of a wire loop dipped in soap solution to illustrate the surface tension experiment. (2mks)

b) Explain the observation in 14 (a) above. (2mks)

15. A uniform wooden bar of length 1m and mass 5kg is pivoted at 40cm mark as shown below. Calculate the value of  $F_1$ . (4mks)



16. Using domain theory of magnetism, explain how a magnet may lose its magnetism on heating and hammering. (4mks)

17. Distinguish between soft and hard magnetic materials. (2mks)

18. A boy jumping from a high table tends to spread his legs. Explain (1mk)
19. State **two** differences between mass and weight. (2mks)
20. State **two** practical applications of friction. (2mks)
21. What is wrong with the statement." the mass of an astronaut in the moon is  $1/6^{\text{th}}$  his mass on earth". (1mk)
22. State the **two** conditions for a body to be in equilibrium. (2mks)
23. Explain what is meant by magnetic shielding and state one application of magnetic shielding. (2mks)
- 24.a) Define the following terms. (2mks)
- i) Principal focus-
  - ii) Radius of curvature-
25. An object is placed 30cm from a concave mirror of focal length 20cm. Calculate. i) The image position (2mks)
- ii) The magnification (2mks)

26. State **one** advantage and one disadvantage of using a convex mirror. (2mks)

Name: ..... Class: .....

Date: ..... Adm No: .....

MATHEMATICS

TIME: 2 HOURS 30 MINUTES

**END OF TERM 1 EXAM**  
*Kenya Certificate of Secondary Education (K.C.S.E.)*  
**FORM TWO**

**INSTRUCTIONS TO CANDIDATES:**

- Write your name, admission number, Class, Signature and write date of examination in the spaces provided
- The paper contains two sections. Section I and Section II.
- Answer ALL the questions in section I
- Answer any five questions in section II.
- Answers and working must be written on the question paper in the spaces provided below each question.
- Show all steps in your calculations below each question.
- Marks may be given for correct working even if the answer is wrong.
- KNEC mathematical table may be used, except where stated otherwise.

**FOR EXAMINERS USE ONLY**  
**SECTION I**

Question	1	2	3	4	5	6	7	8	9	10	11	12	13	14	15	16	TOTAL
Marks																	

**SECTION II**

Question	17	18	19	20	21	22	23	24	TOTAL
Marks									

**GRAND TOTAL**

**SECTION I (50 MARKS)**

Answer all the questions from this section

1. Work out the following, giving the answer as a mixed number in its simplest form

$$\frac{2}{5} \div \frac{1}{2} \text{ of } \frac{4}{9} - 1\frac{1}{10}$$

$$\frac{1}{8} - \frac{1}{6} \times \frac{3}{8}$$

(3marks)

2. When a certain number is divided by 30, 45, 54, there is always a remainder of 21. Find the least numbers. (3marks)

3. Evaluate without using mathematical tables of a calculator,

$$\frac{0.0084 \times 1.23 \times 3.5}{2.87 \times 0.056} \text{ expressing your answer as a single fraction. (3marks)}$$



4. Use logarithm to solve tables to evaluate

(4 marks)

$$\sqrt[3]{\frac{45.3 \times 0.00697}{0.534}}$$

5. If each interior angle of a regular polygon is  $150^\circ$ , how many sides does the polygon have?

(3 marks)

6. Solve for x in the equation

$$32^{(x-3)} \div 8^{(x-4)} = 64 \div 2^x$$

(3 marks)

7. Use reciprocal table to work out.

$$\frac{7}{0.5283} + \frac{0.5}{3.735}$$

(4marks)

8. Three pens and four exercise books cost sh. 87. Two pens and five exercise books cost sh.93. Find the cost of one pen and one exercise book. (3marks)

9. A Kenyan Company received US dollars 100,000. The money was converted into Kenya Shillings in a bank which buys and sell foreign Currencies as shown below.

	<b>Buying (kshs)</b>	<b>Selling (ksh)</b>
1 US Dollar	77.25	77.44
1 sterling pound	119.93	120

a) Calculate the amount of money in ksh, the Company received. (1mark)

b) The company charged the Kenya shillings calculated above into sterling pounds to buy Car in Britain. Calculate the cost of the car to the nearest sterling pounds. (2marks)

10. A company saleslady sold goods worth sh. 1,600,000. From this sale she earned a commission of sh. 40,000.

a) Calculate the rate of Commission. (1mark)

b) If she sold goods whose marked price was sh. 3 600,000 and allowed a discount of 2%, calculate the amount of commission she received. (2marks)

11. A piece of metal has a volume of  $20\text{cm}^3$  and a mass of 300g. Calculate the density of the metal in  $\text{kg/m}^3$ . (3marks)

12. The area of a sector of a circle of diameter 126cm is  $4158\text{cm}^2$ . Calculate the angle subtended at the centre of the circle. (Take  $\pi = \frac{22}{7}$ ) (3marks)

13. Simplify completely by factorization. (3 marks)

$$\frac{ax + bx + ya + yb}{ma + mb + na + nb}$$

14. Evaluate: 
$$\frac{-12 \div (-3) \times 4 - (-20)}{-6 \times 6 \div 3 + (-6)}$$

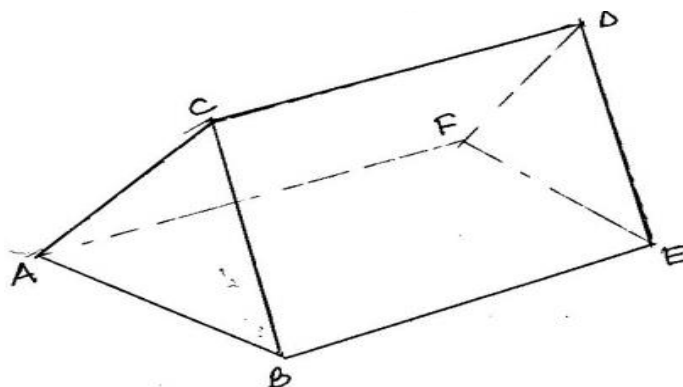
(3 marks)

15. Use the tables of cubes to evaluate:  
marks)

(3

$$(3.461)^3 - \sqrt[3]{2809}$$

16. The figure below is a prism whose cross-section is an equilateral triangle such that  $AB=BC=CA=3\text{cm}$ ,  $BE=CD=AF=5\text{cm}$



Draw the net of the prism

(3marks)

**SECTION II (50 MARKS)**

**Answer five questions only from this section**

**17.** A line L passes through point (-2,3) and (-1, 6) and is perpendicular to a line P at (-1, 6)

a) Find the equation of L. (3marks)

b) Find the equation of P in the form  $ax + by = c$ . (3marks)

c) Given that another line Q is parallel L and passes through point (1, 2), find the x and the y intercepts of line Q. (2marks)

d) Find the point of intersection of lines P and Q. (2marks)

**18.** Triangle PQR has vertices at P(2,3), Q(1,2) and R(4,1), while triangle  $P^1Q^1R^1$  has vertices at  $P^1(-2,3)$ ,  $Q^1(-1,2)$ ,  $R^1(-4,1)$ .

(a) (i) Draw triangle PQR and  $P^1Q^1R^1$  on the grid provided below (2marks)



- (ii) Describe fully a single transformation which maps triangle PQR onto triangle  $P^1Q^1R^1$ .  
(1mark)
- (b) (i) On the same plane, draw triangle  $P^{11}Q^{11}R^{11}$  the image of PQR, under reflection on line  $y + x = 0$  (2marks)

(ii) Describe fully a single transformation which maps triangle  $P^{11}Q^{11}R^{11}$  onto triangle  $P^1Q^1R^1$ . (1mark)

(c) Draw triangle  $P^{111}Q^{111}R^{111}$  such that it can be mapped onto triangle PQR by a positive quarter turn about the origin (2marks)

(d) State all pairs of triangles that are oppositely congruent (2marks)

**19.** A businessman sold a car at sh.900 000 after allowing his customer a 10% discount on the marked price of the car. In so doing he made a profit of 20%.

a) Calculate

(i) The marked price of the car. (3 marks)

(ii) The price at which the businessman had bought the car (2marks)



b) If the businessman had sold the same car without giving a discount. Calculate the percentage profit he would have made. (3 marks)

c) In the month of December the businessman sold 20 vehicles without giving a discount. Determine the total profit he received from the sale. (2 marks)

**20.** Four towns A, B, C and D are such that town B is 180 km East of A. Town C is at a distance of 120km on a bearing of  $300^\circ$  from B. Town D is due West of C and North Of A.

(a) Using a scale of 1cm to represent 20km, make an accurate scale drawing to show the relative positions of the towns. (4 marks)

(b) Find:

(i) Determine the bearing of C from A  
(1mark)

(ii) Determine the distance of C from D

(2 marks)

(iii) Determine the bearing of B from D  
mark)

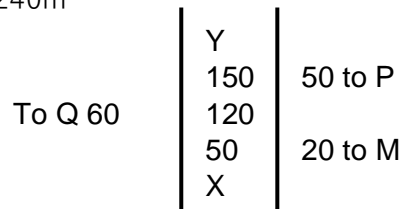
(1

(iv) Determine the distance of A from D  
marks)

(2

**21.** The measurements (in metres) of a field were given in a field note book as follows:

Base line XY = 240m



(a) Using a scale of 1 cm to represent 20 m, draw an accurate map of the farm. (4 marks)

(b) **Find** the area of the field in hectares.

(4marks)

(c) If the farm is on sale at sh. 900 000 per hectare, find how much the farm costs. (2 marks)

**22.** Triangle ABC is such that  $AB = 7\text{cm}$ ,  $\text{angle } ABC = 120^\circ$  and  $\text{angle } BAC = 30^\circ$ .

(a) Using a ruler and a pair of compass only, construct triangle ABC. (3 marks)

(b) Measure the length of:

(i) Line BC (1 mark)

(ii) Line BC (1 mark)

(c) Drop a perpendicular from C to meet line AB extended at M. (2 marks)

(d) Measure the length of line CM (1 mark)

(e) Calculate the area of triangle ABC (2 marks)

**23.** A hollow metal pipe whose internal and external diameters are 6.3cm and 2.8cm respectively is 3.5m long.

(a) Calculate the volume of the metal used to make the pipe. (4 marks)

(b) The pipe is melted down and recast into a solid cylinder of height 1.75m. Calculate the radius of the cylinder to two decimal places. (4 marks)

(c) Given that the density of the metal above is  $4.2\text{g/cm}^3$ , calculate the mass of the solid cylinder in kilograms. (2 marks)

**24.** Three business people Kamau, Gachui and Maina agreed to contribute Kshs. 1 210 000 to start a business. The ratio of Kamau's contribution to Gachui's contribution is 3 : 2 while that of Gachui to Maina is 1 : 3.

(a) Determine the ratio of Kamau's contribution to Maina's contribution. (2 marks)

(b) Determine the amount of money contributed by Kamau (2 marks)

(c) They agreed to share their profits as follows;

50% to be shared in the ratio of their contributions

40% to be retained for the running of the business

10% to be set aside for emergencies

If their total profit for the year 2014 was sh.704 000, determine the

(i) Amount of money retained for running the business. (2 marks)

(ii) The amount of money set aside for emergencies. (2 marks)

(iii) The amount of received by Gachui (2 marks)

**END OF TERM 1 EXAM, FORM TWO, CRE**

**NAME.....ADM.....CLASS.....**

1. State six effects of the Bible translation.  
(6mks)

.....  
.....  
.....  
.....  
.....  
.....  
.....  
.....  
.....  
.....  
.....  
.....  
.....  
.....  
.....

2. Identify the idolatry practices during the time of Elijah.  
(6mks)

.....  
.....  
.....  
.....  
.....  
.....  
.....  
.....  
.....  
.....  
.....  
.....  
.....  
.....  
.....

3. Outline the factors that contribute to harmony and mutual responsibility in the African community.  
(6mks)

.....

.....

.....

.....

.....

.....

.....

.....

.....

.....

.....

.....

.....

.....

.....

.....

.....

.....

.....

.....

.....

4. Outline the Old Testament concept of the Messiah as fulfilled in the New Testament. (6mks)

.....

.....

.....

.....

.....

.....

.....

.....

.....

.....

.....

.....

.....

.....

.....

.....

.....

.....

.....

.....

.....

.....

.....

5. Describe the annunciation of the birth of John the Baptist to Zachariah. (Luke 1:5 – 25)  
(6mks)

.....

.....

.....

.....

.....

.....

.....

.....

.....

.....

.....

.....

.....

.....

.....

.....

.....

.....

.....

.....











# ACTED SET BOOKS VIDEOS.

Details Inscribed in each. Delivered Via Telegram.

WhatsApp/Sms/Call Sir Obiero Amos

# 0706 851 439



**By SIR OBIERO AMOS  
RESOURCES**



**AMOB! SOFT COPY PUBLISHERS**


Transparency, Honesty and Accountability Defined



**STUDY WITH SIR OBIERO & AMOBI  
SOFT COPY PUBLISHERS  
WHATSAPP/SMS/CALL 0706851439**

**ACQUIRE THE FOLLOWING  
KASNEB NOTES/REVISION KITS**

**NOW :**

 **CPA  
ATD  
CS**

 **CICT  
CIFA**



**BY SIR OBIERO AMOS  
RESOURCES**



**AMOBI SOFT COPY PUBLISHERS**  
Transparency, Honesty and Accountability Defined



**Study Texts & Revision Partners**