

NAME.....ADM.NO.....

SCHOOL.....CLASS..... SIGN.....

DATE.....

443/2
AGRICULTURE
PAPER 2
TIME: 2 HOURS
AUGUST-2022



CEKENAS END OF TERM TWO EXAM-2022

FORM FOUR EXAM

Kenya Certificate of Secondary Education. (K.C.S.E)

443/2

AGRICULTURE
PAPER 2

INSTRUCTIONS TO CANDIDATES

1. Write your name and admission number in the spaces provided above
2. Sign and write date of examination in the space provided.
3. This paper consists of **three** sections **A, B** and **C**
4. Answer **ALL** questions in section A and B and any **two** questions from section C
5. Candidates must answer the questions in English.
6. All answers should be written in the spaces provided.

SECTION	QUESTION	MAXIMUM SCORE	CANDIDATE'S SCORE
A	1-17	30	
B	18-21	20	
C		20 20	
TOTAL SCORE		90	

SECTION A. (30MARKS)

1. State **four** methods of identification in livestock production. (2mks)

.....

.....

.....

.....

2. Explain the meaning of the following terms as used in livestock health.

i) A notifiable disease. (1mk)

.....

.....

ii) Prophylactics. (1mk)

.....

.....

3. Give **two** reasons for including roughages in diet of non-ruminants. (1mk)

.....

.....

4. State **four** equalities of a good grain store. (2mks)

.....

.....

.....

.....

5. Give **four** ways a farmer would adopt to improve production in indigenous cattle. (2mks)

.....

.....

.....

.....

6. State **two** factors to consider when formulating livestock ration. (2mks)

.....
.....

7. State **three** importance of farm buildings. (1½mks)

.....
.....
.....

8. State **four** symptoms of new castle disease in poultry. (2mks)

.....
.....
.....
.....

9. What is creep feeding in pig production? (1mk)

.....
.....

10. State the use of each of the following tools and equipment. (2mks)

i) Routers

.....

ii) Tinsnips

.....

iii) Wood rasp

.....

iv) Chipping hammer

.....

11. State **three** methods of treating timber for building construction. (1½mks)

.....
.....
.....
.....

12. State **two** ways in which feed additives are important in animal nutrition. (2mks)

.....
.....
.....

13. State **four** predisposing factors for mastitis in dairy cattle. (2mks)

.....
.....
.....
.....

14. Give **two** examples of a three host tick. (1mk)

.....
.....

15. State **four** general uses of solar energy. (2mks)

.....
.....
.....
.....

16. Name **two** causes of bloat in farm animals. (2mks)

.....
.....

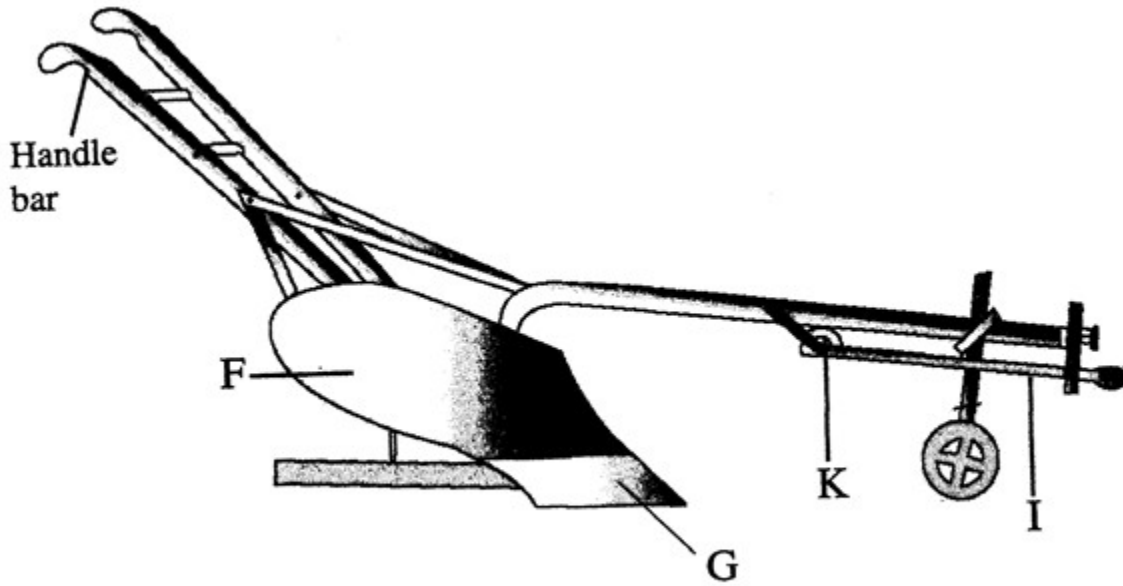
17. Name **two** light breeds of poultry. (1mk)

.....
.....
.....

SECTION B (20MARKS)

Answer ALL questions in this section

18. Study the diagram below of an ox-plough and use it to answer the questions that follow.



a) Give the functions of parts G and F

G..... (1mark)

F..... (1mark)

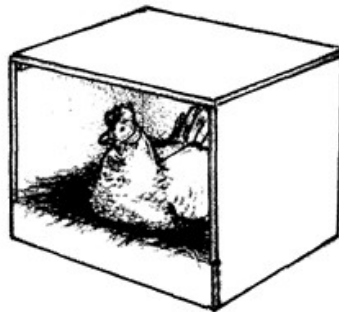
b) Name the parts labelled K and I

K..... (1mark)

I..... (1mark)

c) Mark on the diagram using letters M and N the two parts used to adjust the depth of ploughing. (1mark)

19. The diagram below shows a hen sitting on eggs. Use it to answer the questions that follow.



a) Name the method of incubation illustrated above. (1mark)

.....

b) Give **two** signs that may show that the hen is ready to sit on the eggs. (2marks)

.....

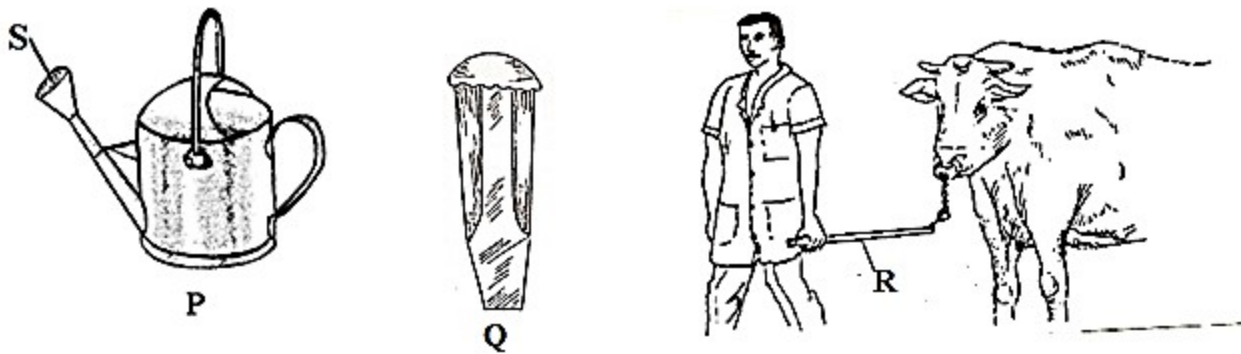
.....

c) State **two** problems of using the above method to hatch chicks. (2marks)

.....

.....

20.



a) Give the identity of tools P and Q.

P (1mark)

.....

Q (1mark)

.....

b) What is the role of part labelled S on diagram P. (1mark)

.....

.....

c) Name another tool used in conjunction with tool R. (1mark)

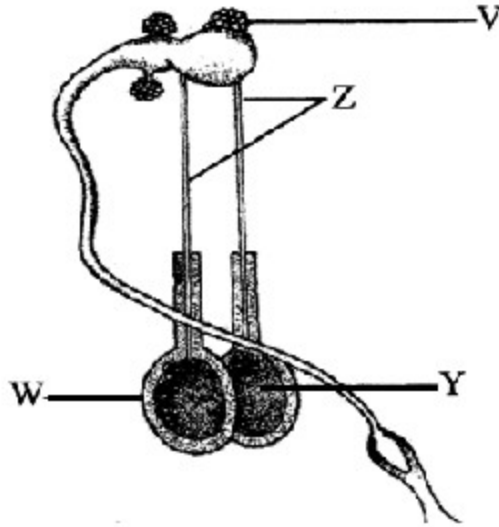
.....

d) Give **one** maintenance practice for tool Q.

(1mark)

.....

21. The diagram below shows the male reproductive system in cattle. Use it to answer the questions that follow.



a) Name the parts labelled Z and W

Z (1mark)

.....

W (1mark)

.....

b) State the function of part labelled V and Y

V (1mark)

.....

Y (1mark)

.....

c) How is part W adapted to its function? (1mark)

.....

SECTION C (40MARKS)

