

NAME:..... INDEX NO:.....

CANDIDATE SIGN:.....

DATE:.....

**GATUNDU SOUTH TRIAL  
EXAMINATION  
JULY 2018  
AGRICULTURE PAPER TWO 443/2**

**INSTRUCTIONS TO CANDIDATES**

- ❖ THIS PAPER CONSISTS OF THREE SECTIONS A,B AND C
- ❖ ANSWER ALL QUESTIONS IN SECTION A AND B
- ❖ ANSWER ANY TWO QUESTIONS IN SECTION C

**FOR EXAMINER'S USE ONLY**

SECTION	QUESTIONS	MAXIMUM SCORE	CANDIDATE SCORE
A	1-20	30	
B	21-25	20	
C	26-28	40	
TOTAL MARKS			

**SECTION A (30MKS)**

**Answer all questions from this section.**

1. Name two tools used in castration of livestock. (1mk)  
.....  
.....  
.....  
.....
2. Name four methods used in the farm to restrain animals. (2mks)  
.....  
.....  
.....  
.....
3. List four precautions that should be taken when using farm tools and equipment. (2mks)  
.....  
.....  
.....  
.....
4. Give two distinguishing features between the following breeds of rabbits. Kenya white and California white. (1mk)  
.....  
.....  
.....  
.....
5. Name four dairy goat breeds reared in Kenya. (2mks)  
.....  
.....  
.....  
.....
6. Give two functions of calcium in dairy cows. (1mk)  
.....  
.....
7. Give two measures a poultry farmer can use to control fleas in poultry. (1mk)  
.....  
.....  
.....
8. Name the compartment of the ruminant digestive system where microbial digestion takes place. (1mk)

.....  
9. State four ways of minimizing disowning of lambs by ewes. (2mks)

.....  
.....  
.....  
.....

10. Give the gestation period of the following animals. (2mks)

a) Cow

b) Sow

c) Ewe

d) Doe

11. Differentiate between pen lambing and drift lambing. (1mk)

.....  
.....

12. State four reasons why castration is done in livestock. (2mks)

.....  
.....  
.....  
.....

13. State two ways that shows how good feeding help to control livestock diseases. (1mk)

.....  
.....

14. Explain four factors which are considered when siting a fishpond. (2mks)

.....  
.....  
.....  
.....

15. Name four notifiable diseases in livestock. (2mks)

.....  
.....  
.....  
.....

16. Name two causes of ruminal tympany in ruminant animals. (1mk)

.....  
.....

17. State four qualities of marketable eggs. (2mks)

.....  
.....  
.....  
.....

18. State the functional differences between oxytocin and adrenaline hormones which influence milk let-down. (1mk)

.....  
.....

19. State four sources of tractor hire services. (2mks)

.....  
.....  
.....  
.....

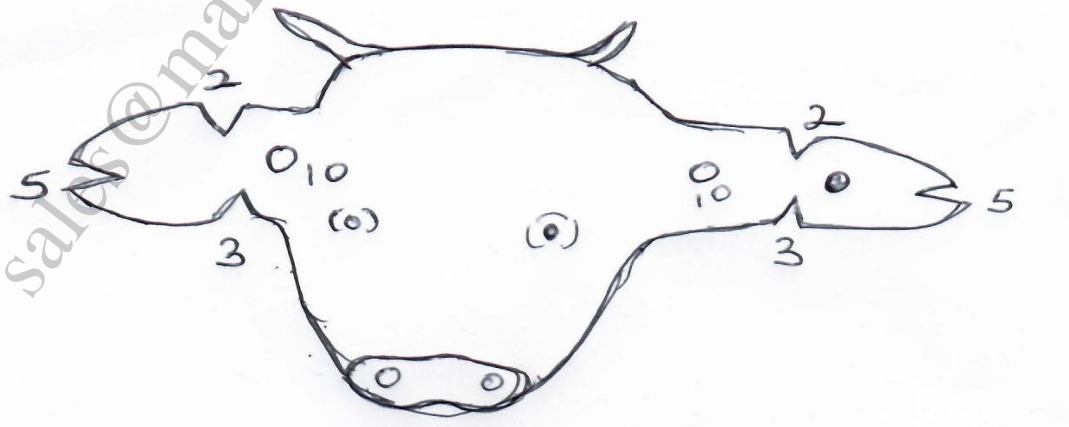
20. State two reasons for washing the udder of a cow with warm water before milking. (1mk)

.....  
.....

**SECTION B (20MKS)**

**Answer all questions.**

21. The diagram below illustrates a method of identification in livestock production. Study the diagram and answer the questions that follow.



i) Name the type of identification illustrated above. (1mk)

.....  
.....

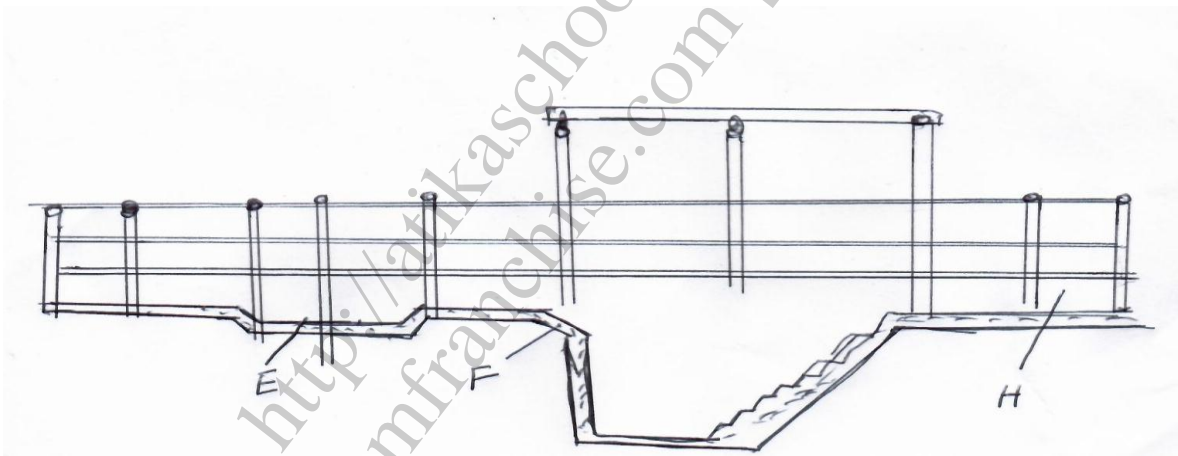
ii) Give the identification number of the animal illustrated in the diagram above. (1mk)

.....  
.....

iii) Using diagrams illustrate how you can identify animals number 24 and 36 using the above method. (2mks)

.....  
.....  
.....

22. The illustration below shows a cross section of a cattle dip.



a) Name the parts labelled E and G.

E:.....(1mk)

G:.....(1mk)

b) State one use of each of the parts labelled E,F,H. (3mks)

E:.....

F:.....

H:.....

23. A farmer wanted to prepare a 200kg of pig's ratio containing 16% DCP. Using the Pearson's square method calculate the amount of maize containing 10% DCP and cotton seed containing 28% DCP the farmer would need to prepare the ration. Show your working. (4mks)

24. The diagram below illustrates a hoof of a sheep. Study it carefully and answer the questions that follow.



a) Name the routine management practice that should be carried out on the hoof illustrated above. (1mk)

.....  
.....

b) State two reasons for carrying out the management practice in (a) above. (2mks)

.....  
.....  
.....

25. The diagram below illustrates a symptom of a disease in poultry. Study it carefully and answer the questions that follow.



a) (i) Identify the disease. (1mk)

.....

(ii) Identify the causal organism. (1mk)

.....

b) Apart from the lesions, state two other symptoms of the disease. (2mks)

.....  
.....

c) State one control measure of the disease. (1mk)

.....  
.....

**SECTION C (40MKS)**

**Answer any two questions from this section.**

26. (a) Describe contagious abortion (Brucellosis) disease under the following sub-headings.

- i) Causal organisms. (1mk)
- ii) Animals affected (2mks)
- iii) Symptoms (4mks)
- iv) Control measures (6mks)

(b) Describe the structural features of a calf pen. (7mks)

27. (a) Outline five benefits of using biogas as a source of power on the farm. (5mks)

(b) Give five advantages of using a sub-soiler in seedbed preparation. (5mks)

© Explain five factors that a farmer should consider when siting a bee hive to prevent swarming of bees. (10mks)

28. (a) Give the reasons why embryo transfer use should be encouraged in dairy cattle breeding. (8mks)

(b) Giving a relevant example in each case, describe the role of the various components of a balanced diet in livestock nutrition. (12mks)

<http://atikaschool.org>  
[sales@manyamfranchise.com](mailto:sales@manyamfranchise.com) [0728 450425]