

Name..... Index No.....

443/2
AGRICULTURE
PAPER 2
JULY/AUGUST 2016

NAKURU SUB COUNTY SEC. SCHOOLS JOINT MOCK EXAMINATION 2016

AGRICULTURE
PAPER 2
2 HOURS

INSTRUCTIONS TO CANDIDATES

- Write your name and Index number in the spaces provided above
- This paper consists of three sections A, B and C.
- Answer **all** the questions in section A and B
- Answer **any two** questions in section C.

For Examiners Use only

Section	Questions	Maximum score	Candidates score
A	1-18	30	
B	19-21	20	
C	22-24	40	
TOTAL SCORE		90	

SECTION A (30 MARKS)

Answer ALL the questions in this section in the spaces provided

1. State **four** disadvantages of Natural mating (2 marks)

- i)
- ii).....
- iii)
- iv)

2. Give **two** reasons for supplementary feeding of bees. (1 marks)

- i)
- ii).....

3. Name any **two** methods used to identify goats (1 mark)

- i)
- ii).....

4. List **three** signs of lambing (1 ½ mark)

- i)
- ii).....

5. What is cropping in fish production? (1 mark)

.....
.....

6. Give **two** reasons why jersey bread is suitable than Friesian in marginal areas. (1 mark)

.....
.....

7. State **four** Methods used to control cannibalisms in a flock of layers in a deep litter system (2 marks)

- i)
- ii).....
- iii)
- iv)

8. State **two** reasons why we have a foot bath in cattle dip (1 mark)
- i)
- ii).....
9. Give **three** advantages of disc plough over mouldboard plough (1 ½ mark)
- i)
- ii).....
- iii)
10. State **four** functions of water in an animal body (2 marks)
- i)
- ii).....
- iii)
- iv)
11. State **four** reasons for controlling livestock diseases (2 marks)
- i)
- ii).....
- iii)
- iv)
12. State **one** importance of guard rails in furrowing pen. (1 mark)
- i)
13. Give **two** groups of vitamins used in livestock feeding (1 mark)
- i)
- ii).....
14. State the functions of the following tools
- (i) Shovel(½mark)
- (ii)Rubber ring (½ mark)
15. Give **three** control measures for fowl pox disease in poultry (1½ mark)
- i)
- ii).....
- iii)

16. What is production ration? (1 mark)

.....

17. State **two** functions of a carburetor (1 mark)

i)

ii).....

18. Give the hormone responsible for milk letdown.....(½ mark)

19. List any **two** chemicals used to treat wood against weather elements. (1 mark)

i)

ii).....

20. State any **four** characteristics of exotic breeds of cattle (2 marks)

i)

ii).....

iii)

iv)

21. Give **three** uses of Biogas on a farm. (1 ½ mark)

i)

ii).....

iii)

22. State five practices done to make wooden fence posts last longer. (2 ½ mark)

i)

ii).....

iii)

iv)

v).....

SECTION B (20 marks)

Answer all the questions in this section in the spaces provided.

23. A dairy farmer is required to prepare 100kg of dairy meal containing 20% D.C.P (Digestible Crude Protein). Using the Pearson's method, calculate the quantity of Soya Beans (40% D.C.P) and rice (16% D.C.P) the farmer requires for the dairy meal (5 marks)

.....

.....

.....

.....

.....

.....

.....

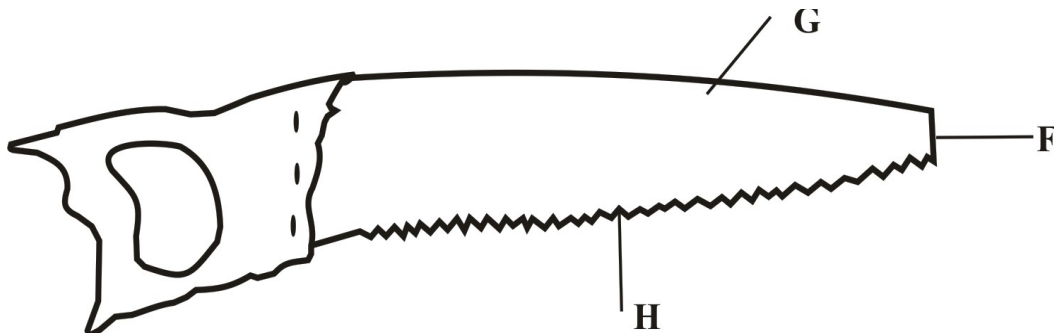
.....

.....

.....

.....

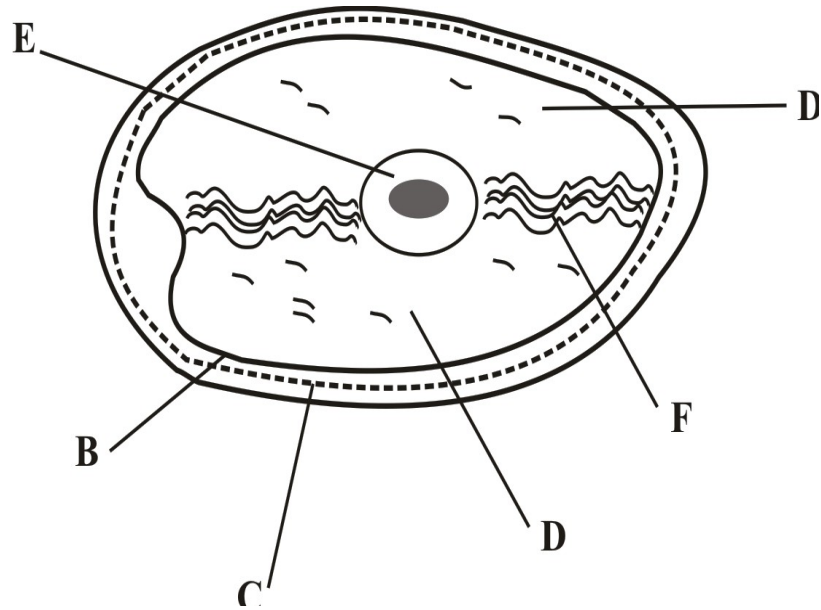
24. The following is an illustration of a handsaw. Study it carefully and answer the questions that follow.



- (a) Name the parts labelled
- F** (1 mark)
- G**..... (1 mark)

- (b) Explain **three** maintenance practices that should be carried out on the part labeled **H**.
-
-
-
- (3 marks)

25. Study the diagram below of an egg and use it to answer the questions that follow.



(a) Label the parts (2 marks)

B

C

D

F.....

(b) List any **two** structural qualities of an egg to be incubated (2 marks)

(i)

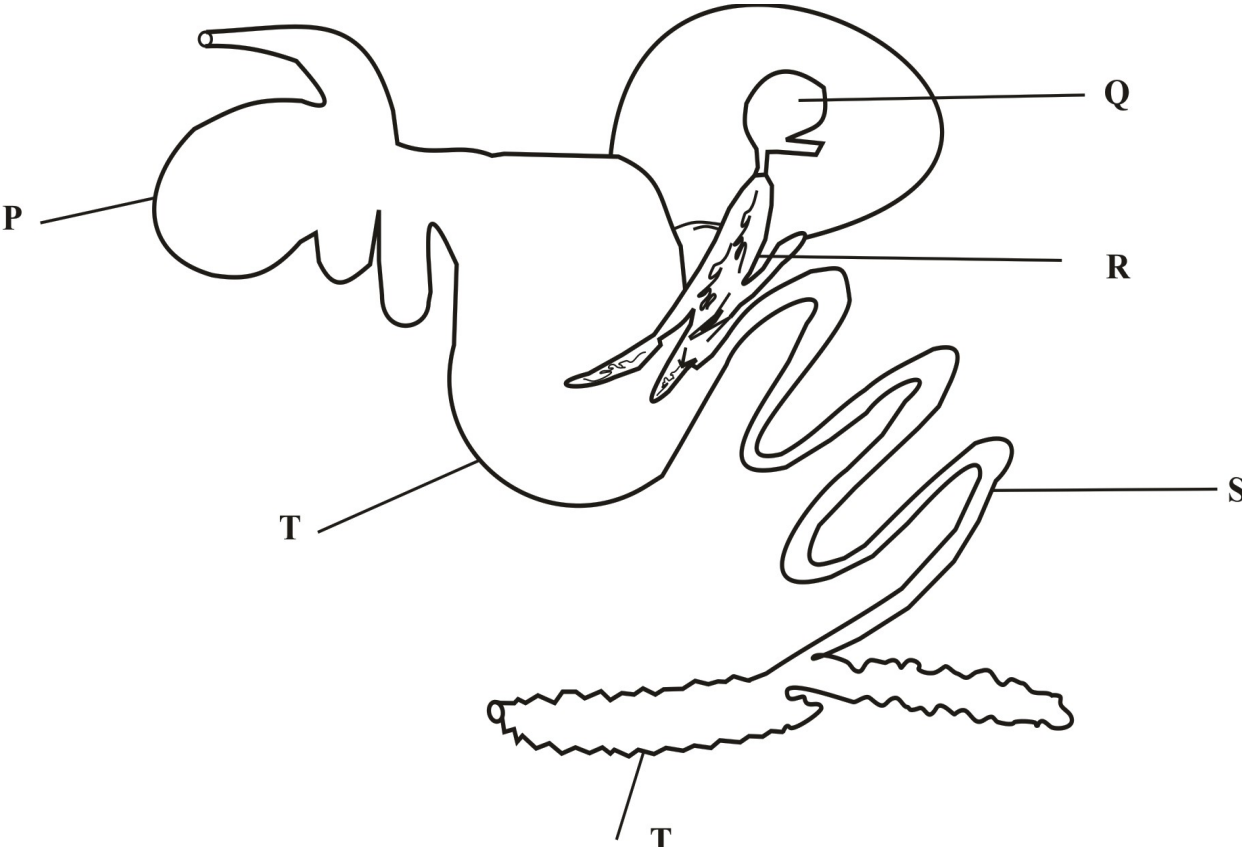
(ii).....

(c) Give the functions of **E** (1 mark)

.....

.....

26. The diagram below shows the parts of the digestive system of cattle. Study it and answer the questions that follow.



(a) Name the parts labelled

P (½ mark)

R (½ mark)

Q (½ mark)

(b) State one function for each of the following parts labeled S and T

S (1 mark)

T (1 mark)

(c) Give one enzyme produced by each of the parts labeled R and S

R (1 mark)

S (½ mark)

SECTION C (40 marks)

Answer any two questions from this section in the spaces provided after question 29

27. (a) State and explain **five** management practices that would enable maximum fish harvesting in

a fish pond. (10 marks)

(b) Give **ten** management practices carried out in a crush. (10 marks)

28. Describe the management practices on ewes from mating to weaning of lambs. 20 marks)

29. (a) Explain how power transmitted from tractor engine is made available for use on the farm. (6 marks)

(b) Discuss factors that influence milk composition and quality in cows. (14 marks)

.....

.....

.....

.....

.....

.....

.....

.....

.....

.....

.....

.....

.....

.....

.....

.....

.....

.....

.....

.....

.....

.....

.....

.....

.....