

THE KENYA NATIONAL EXAMINATION AND ASSESSMENT PREDICTION SERIES

| | | | |
|-----------------------|--|-------------------|--|
| Candidate's Name | | Assessment Number | |
| School Name | | School Code | |
| Candidate's Signature | | Date | |

KENYA JUNIOR SCHOOL EDUCATION ASSESSMENT TERM 2 ENDTERM 2025

907: SOCIAL STUDIES

Time: 1 Hour 30 Minutes

INSTRUCTIONS TO CANDIDATES

1. Write your name and assessment number correctly.
2. Write the name and code of your school in the spaces as indicated above.
3. Write the date of the assessment.
4. This paper consists of two sections: **A** and **B**.
5. Section **A** comprises Multiple Choice Questions.
6. Section **B** comprises structured questions and essay questions.
7. Answer **ALL** the questions in Section **A** on the separate **ANSWER SHEET** provided.
8. Answer **ALL** the questions in Section **B** in the spaces provided on this question paper.
9. Do **NOT** remove any page from this question paper.
10. Answer the questions in English.

For official use only

| SECTION B | Question | Candidate's Score per Question | Maximum Score | Candidate's Score per Task |
|--------------|----------|--------------------------------|---------------|----------------------------|
| Task 1 | 21 | | 10 | |
| | 22 | | 5 | |
| | 23 | | 6 | |
| | 24 | | 5 | |
| | 25 | | 2 | |
| | 26 | | 3 | |
| Task 2 | 27 | | 5 | |
| | 28 | | 5 | |
| | 29 | | 10 | |
| | 30 | | 4 | |
| | 31 | | 4 | |
| Task 3 | 32 | | 10 | |
| | 33 | | 3 | |
| Task 4 | 34 | | 8 | |
| TOTAL | | | 100 | 100 |

This paper consists of 16 printed pages. Candidates should check the question paper to ascertain that all the pages are printed as indicated and that no questions are missing.

© 2025 The Kenya National Examination and Assessment Prediction Series

Turn over

-SOCIAL STUDIES-

CBE

1. You have been given this question paper and a separate answer sheet. Answer all the questions in Section A on the separate answer sheet provided.
2. When you have chosen your answer, mark it on the **ANSWER SHEET**, not on this question paper.

HOW TO USE THE ANSWER SHEET

3. Use an ordinary HB pencil.
4. Confirm that the answer sheet you have been provided with has the following:

YOUR ASSESSMENT NUMBER

YOUR NAME

NAME OF YOUR SCHOOL

NAME OF THE SUBJECT

5. Keep the answer sheet clean, and dry and **DO NOT** fold it.
6. For each of the questions **1 – 20**, four answers are given. The answers are lettered **A, B, C** and **D**. In each case, only **ONE** of the four answers is correct. Choose the correct answer.
7. On the answer sheet, the correct answer is to be shown by drawing a dark line inside the box in which the letter you have chosen is written.

Example

In the Question Booklet:

17. Your class is planning to start an enterprise project in the school. The first activity the class should do is to: A. agree on how to share the profits from the project B. agree on roles during the project C. discuss where to sell the products D. discuss the type of project to start.

The correct answer is 'D'.

On the answer sheet, in the set of boxes given for number 17, draw a dark line inside the box with the letter B printed in it as indicated below.

17. [A] [B] [C] [D]

18. Your dark line **MUST** be inside the box.

19. For each question, **ONLY ONE** box is to be marked in each set of four boxes.

SECTION A (20 marks)

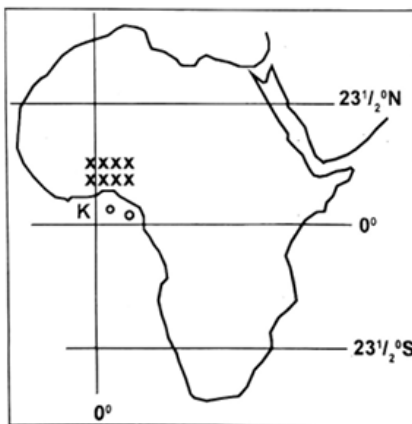
Answer ALL the questions in this section.

1. Which period of the Stone Age is characterized by the development of microliths and bow and arrow technology?
 - A. Early Stone Age
 - B. Middle Stone Age
 - C. Late Stone Age
 - D. Iron Age
2. Before the introduction of money, trade in Africa was mainly conducted through bartering. Which of the following factors contributed most to the eventual introduction of money in Africa?
 - A. Abundance of gold deposits
 - B. Increased population growth
 - C. Challenges associated with the barter system
 - D. Influence of European traders
3. Which of the following describes the human ability to understand and manage one's own feelings?
 - A. Personal values
 - B. Self-esteem
 - C. Emotional intelligence
 - D. Personal awareness
4. The ancient civilization of Egypt was highly influential. Which of the following is a direct influence of Ancient Egypt on modern African governance systems?
 - A. The concept of democratic elections.
 - B. Centralized bureaucratic administration.
 - C. The establishment of constitutional monarchies.
 - D. The principle of separation of powers.
5. The Indian Ocean Slave Trade and the Trans-Saharan Slave Trade were significant historical events. A key difference between them was:
 - A. The Trans-Saharan Slave Trade primarily involved female slaves.
 - B. The Indian Ocean Slave Trade ended much earlier than the Trans-Saharan Slave Trade.
 - C. The Trans-Saharan Slave Trade routes were mainly inland, while Indian Ocean routes were maritime.
 - D. The Indian Ocean Slave Trade involved slaves from the Americas.

6. Historical information is gathered from various sources. Which of the following is the best example of an **archaeological primary source**?
- A. An academic journal article about early humans.
 - B. A clay pot unearthed from an ancient settlement.
 - C. A traditional oral story passed down through generations.
 - D. A photograph of a historical monument.
7. The Earth's crust is constantly undergoing changes due to internal processes. Which geological process is primarily responsible for the formation of fold mountains?
- A. Faulting
 - B. Volcanism
 - C. Folding
 - D. Erosion
8. Weather instruments help us understand atmospheric conditions. Learners observed the instrument shown below.



- What is the name of the instrument shown above?
- A. Wind vane
 - B. Hygrometer
 - C. Rain gauge
 - D. Anemometer
9. Longitudes and latitudes are used to pinpoint locations on Earth.



The longitude 0° passes through which significant city?

- A. Dakar
- B. Nairobi
- C. Accra
- D. Cairo

10. Personal values are fundamental to self-exploration. Which of the following best reflects a strong personal value of integrity?
- A. Always seeking personal gain.
 - B. Acting honestly and morally, even when no one is watching.
 - C. Adapting your beliefs to fit different social situations.
 - D. Avoiding difficult decisions.
11. The Berlin Conference of 1884-1885 had lasting impacts on Africa. Which of the following was a major term agreed upon by European powers at the conference?
- A. Respect for existing African traditional boundaries.
 - B. Open access to all African rivers for international trade.
 - C. The need for effective occupation to validate territorial claims.
 - D. Joint administration of all African colonies.
12. The Constitution of Kenya enshrines fundamental human rights. Which characteristic of human rights implies that they apply to all people equally, regardless of their background?
- A. Inalienable
 - B. Universal
 - C. Indivisible
 - D. Interdependent
13. Population pyramids graphically represent age and sex distribution. A population pyramid with a narrow base and bulging middle suggests:
- A. High birth rates and a young population.
 - B. Rapid population growth.
 - C. Low birth rates and an aging population.
 - D. High infant mortality rates.
14. Self-esteem is crucial for a learner's well-being. Which of the following best demonstrates a learner with healthy self-esteem?
- A. Always comparing their grades with others.
 - B. Being able to accept both praise and constructive criticism.
 - C. Avoiding participation in activities to prevent failure.
 - D. Relying on others for validation and approval.

15. During a video lesson in school, learners were shown a clip on continental drift theory. A geographer responsible for the development of the theory was discussed.



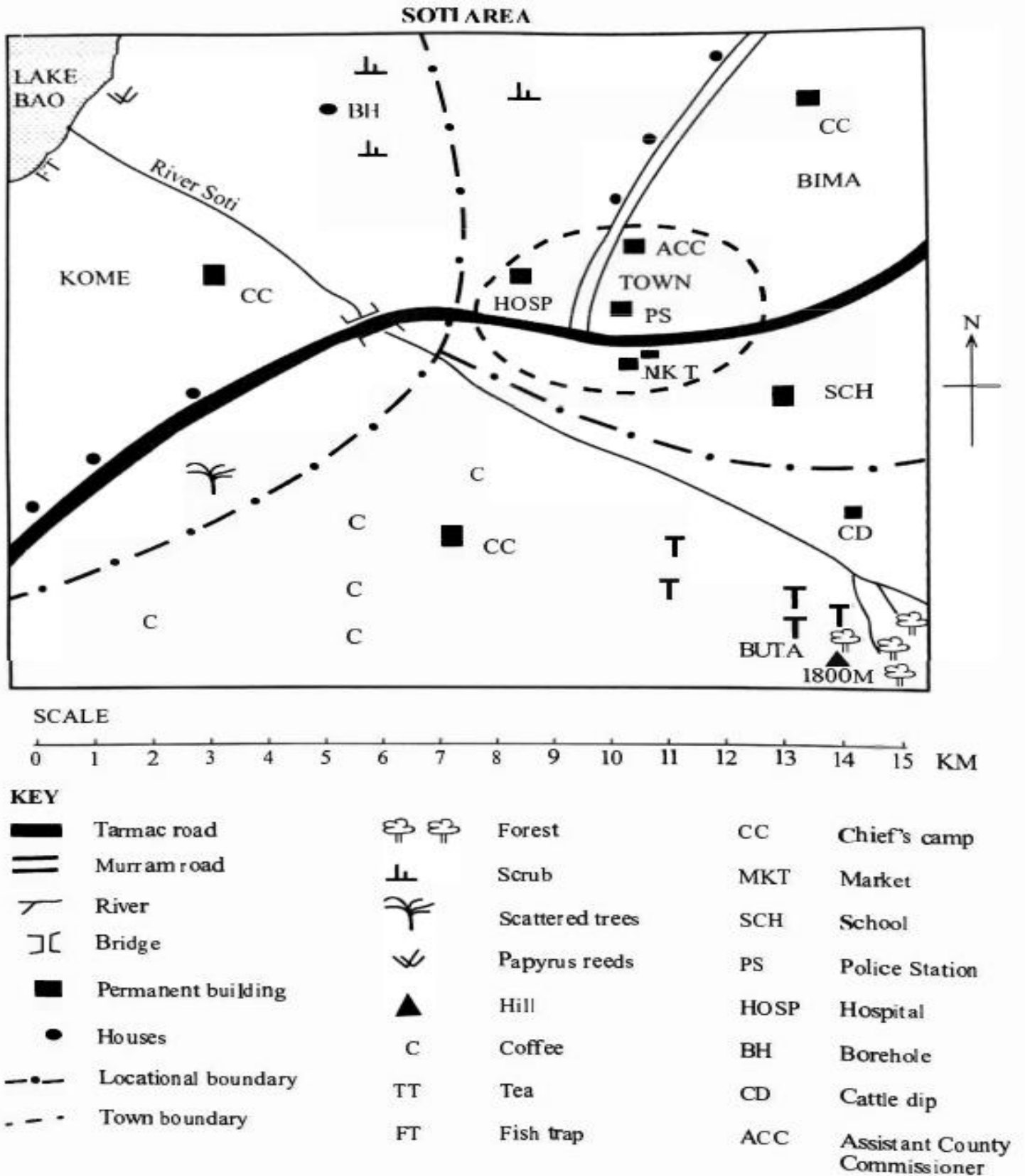
His name was?

- A. Sir Isaac Newton B. Sir. Charles Darwin C. Gregor Mendel D. Alfred Wegener.
16. Weather and climate in Africa are affected by various factors. Which factor primarily influences the formation of the Great Rift Valley and associated landforms?
- A. Ocean currents C. Continental drift and plate tectonics
B. Latitude D. Prevailing winds
17. Vegetation distribution in Africa is highly diverse. Which type of vegetation is typically found at the highest altitudes on African mountains?
- A. Savannah grasslands B. Tropical rainforest C. Montane vegetation D. Mediterranean vegetation
18. Lalibela in Ethiopia is a renowned World Heritage Site. What makes it particularly significant?
- A. Its extensive fossil discoveries.
B. Its ancient trade routes connecting to Asia.
C. Its unique rock-hewn churches carved out of solid rock.
D. Its historical role as a major port city.
19. Community Service Learning projects are part of CBC. Which of the following is a primary goal of a community service learning project?
- A. To earn academic credits quickly.
B. To gain personal recognition from the community.
C. To apply classroom knowledge to address real community needs.
D. To avoid traditional classroom assignments.
20. At 10:00 a.m., Fatuma, who is at Kisumu, on longitude 32° E calls her friend Halima, who is at Dar es Salaam, on longitude 39° E. What time will it be at Dar es Salaam?
- A. 9:32 a.m. B. 8:10 a.m. C. 10:28 a.m. D. 9:23 a.m.

SECTION B (80 marks)

Answer ALL questions in this section.

21. Use the map below to answer question 21.



a) The direction of the cattle dip from the Lake Bao

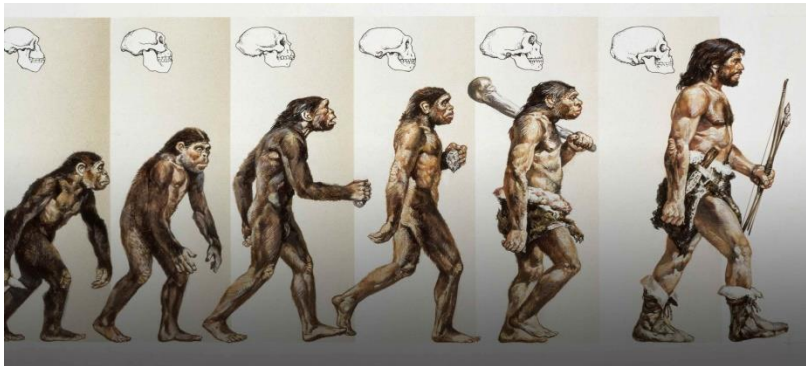
b) The town has developed mainly because of

c) The approximate area of Lake Bao is

d) The climate of Buta is likely to be

e) The main type of vegetation found in the northern part of Soti Area is

22. Human origin and early man are key areas of historical study.



a) Describe the main characteristics of the tools used by Early Stone Age man. (3 marks)

b) Explain three significant changes that took place as a result of evolution during the different Stone Age periods of man. (2 marks)

c) Identify the following Egyptian innovations

A.



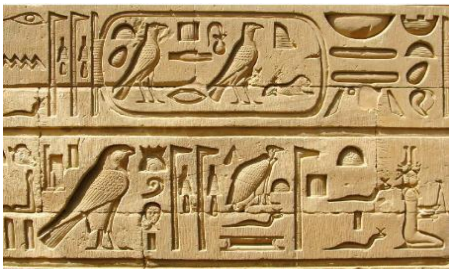
_____.

B.



_____.

C.



_____.

23. Early African civilizations were centers of innovation and development.

a) Name two early African civilizations known for their significant architectural achievements. (2 marks)

b) Outline three ways the Kongo Kingdom influenced the political organization of subsequent communities in Central Africa. (3 marks)

24. Understanding historical information requires a critical approach.

a) Differentiate between primary and secondary sources of historical information. (2 marks)

b) Explain four reasons why it is important to consult both primary and secondary sources when researching historical events. (4 marks)

25. The internal structure of the Earth is dynamic, leading to various landforms.

a) Differentiate between horizontal and vertical earth movements. (2 marks)

b)

Explain three resultant features formed by faulting. (3 marks) *

26. Personal awareness contributes to healthy relationships. State two characteristics of healthy interpersonal relationships. (2 marks)

27. African Diasporas have a significant connection to the continent. State three reasons for the historical movement of African people to other parts of the world, leading to the formation of the African Diasporas. (3 marks)

28. Social Studies entrepreneurial opportunities can be found in various sectors. Outline two entrepreneurial opportunities related to the preservation and promotion of historical sites in Africa. (2 marks)

b) Identify the historical monument Located at positions EFG. (3 marks)



E_____

F_____

G_____

29. Personal values are crucial for self-improvement and community well-being. Highlight five national values as enshrined in the Constitution of Kenya. (5 marks)

30. Population distribution and structure are key demographic concepts.

a) Draw a sketch map of Kenya and mark any two physical features and two cities. (4 marks)

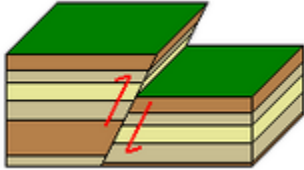
b) Explain three evidence supporting continental drift theory. (3 marks)

c) Identify the following types of faults. (3 marks)

a.



b.



c.



31. Poverty remains a major challenge in many parts of Africa. Outline four **causes of poverty** in African communities. (2 marks)

b) Outline two **solution to combert of poverty** in African communities. (2 marks)

32. Multipurpose River Projects play a crucial role in development. Discuss two conditions that led to the establishment of multipurpose river projects in Africa. (2 marks)

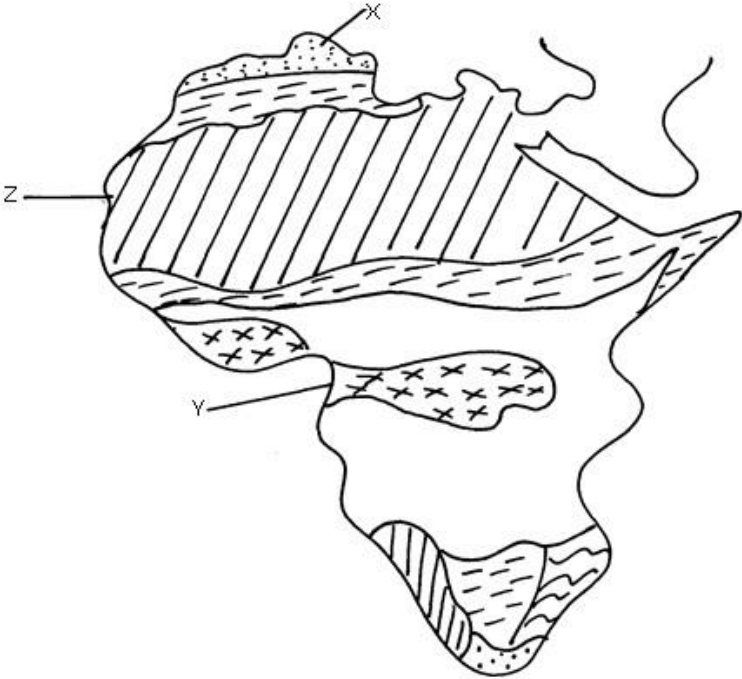
b)Name the main multipurpose river project found in the following country. (2 marks)

| | | |
|----|-------|--|
| a. | Egypt | |
| b. | Kenya | |

33. Weather and climate are interconnected geographical concepts.

a) Highlight one elements of weather. (1 mark)

b) Identify the climatic regions XYZ(3 marks)



X_____

Y_____

Z_____

b) State three factors that affect vegetation distribution in Africa. (3 marks)

b) Describe three characteristics of savannah vegetation (3 marks)

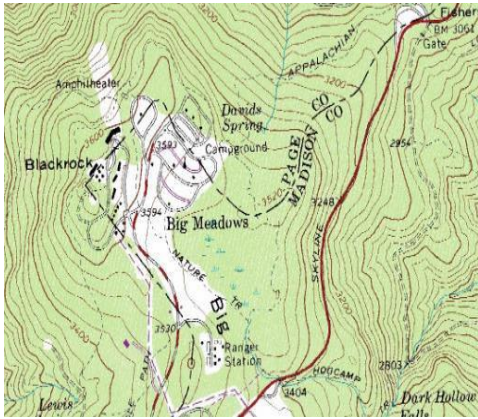
34. Conflict resolution is essential for maintaining peace. State three non-violent ways of solving conflicts in a community. (3 marks)

35. Map reading and interpretation are vital skills in Social Studies.

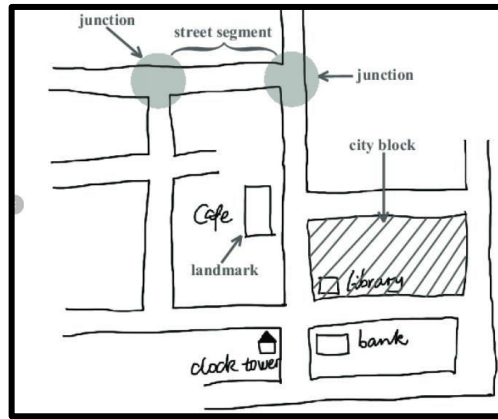
a) Outline two types of scales used on topographical maps. (2 marks)

b) Explain three challenges of fieldwork when collecting geographical data. (3 marks)

c) Name the types of maps shown below. (3 marks)



A



B



C

A: _____

B: _____

C: _____