

# THE ELITES JET



443/2

AGRICULTURE

Paper 2

PRE-MOCK

March 2025 – Time: 2 hours

Name ..... Adm No..... Class.....

School..... Date..... Sign.....

## Instructions to Candidates

- Write your name, school and Admission Number in the spaces provided above.
- Write your class, date of examination and sign in the spaces provided above.
- Answer ALL questions in the spaces provided in the question paper.
- This paper consists of three sections A, B and C.
- Answer all the questions in section A and B and any two questions in section C.
- This paper consists of **12** printed pages.
- Candidate should check the question paper to ascertain that all the pages are printed as indicated and that no questions are missing.
- Candidates must answer the questions in English.

### FOR EXAMINER'S USE ONLY

SECTION	QUESTIONS	MAXIMUM SCORE	CANDIDATE'S SCORE
A	1-16	30	
B	17-20	20	
C	21-23	40	
TOTAL SCORE		90	

**SECTION A: (30 MARKS)***Answer all the questions in this section in the spaces provided*

1. Name the **four** strokes of a four stroke cycle engine. (2 marks)

.....

.....

.....

.....

2. Give **four** reasons why farmers keep livestock in Kenya. (2 marks)

.....

.....

.....

.....

3. Name **two** chemical methods used in dehorning livestock. (1 mark)

.....

.....

4. State **two** reasons why drenching alone is not an effective method of controlling internal parasites. (1 mark)

.....

.....

5. State **four** factors that should be considered when selecting a heifer for milk production. (2 marks)

.....

.....

.....

.....

6. State **four** reasons for culling a breeding boar. (2 marks)

.....

.....

.....

.....

7. State **two** non-chemical methods of controlling ticks in cattle. (2 marks)

.....

.....

8. State **four** characteristics of animals which require a high maintenance ration. (2marks)

.....

.....

.....

.....

9. Give **four** characteristics of a good site for a fish pond. (2 marks)

.....

.....

.....

.....

10. State **four** symptoms of rinderpest in cattle. (2 marks)

.....

.....

.....

.....

11. State **four** abnormalities of an egg that can be detected through candling. (2 marks)

.....

.....

.....

.....

12. (a). What is colostrum ? (1 mark)

.....

(b). State **four** reasons for feeding colostrum to calves immediately after calving. (2 marks)

.....

.....

.....

.....

13. Give **two** disadvantages of barbed wire fence used in paddocking. (1 mark)

.....

.....

14. State **four** reasons why a farmer would choose to use a disc plough rather than a mould board plough. (2 marks)

.....

.....

.....

.....

15. Give **four** reasons for controlling livestock diseases. (2 marks)

.....

.....

.....

.....

16. State **four** ways of generating power on the farm (2 marks)

.....

.....

.....

.....

**SECTION B: (20 marks)**

*Answer all the questions in this section in the spaces provided*

17. The diagrams below illustrate external parasites. Study them and answer the questions that follow.



(a). Identify the **two** parasites labeled M and N. (2 marks)

M.....

N.....

(b). Name **one** disease transmitted by each of the parasites labeled M and N. (1 mark)

.....

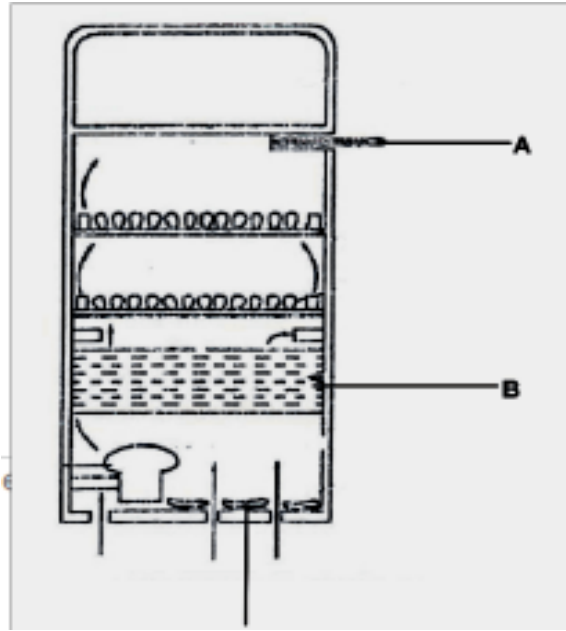
.....

(c). Apart from disease transmission, name other **two** harmful effects of parasites M and N in livestock. (2 marks)

.....

.....

18. The diagram below illustrates a practice in poultry rearing.



(a) Identify the practice.

(1 mark)

.....

(b) Name the part labelled.

(2 marks)

A.....

B.....

(c) Explain **two** activities not shown in the illustration but very important for the practice to succeed.

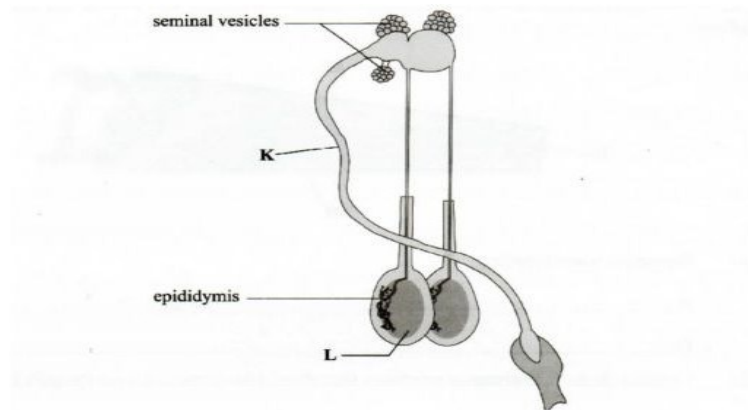
(2 marks)

.....

.....

19. A farmer is required to prepare a 200 kg of dairy meal containing 18% digestible crude protein (DCP). Using the Pearson's Square Method calculate the quantity of sunflower seed cake (34% DCP) and maize germ (7% DCP) the farmer requires for the dairy meal. (5 marks)

20. Below is a diagram illustrating the reproductive system of a bull. Study it and answer the questions that follow.



(a) Identify the parts labelled

(1 mark)

K;.....

L;.....

(b) State the function of the part labelled.

Epididymis.

(1 mark)

.....

Seminal vesicles.

(1 mark)

.....

(c) State the functions of the following parts of a bull's reproductive system

(i) Testes.

(1 mark)

.....

(ii) Penis.

(1 mark)

.....



### **SECTION C ( 40 marks)**

**Answer any Two questions in this section in the spaces provided**

21. (a) What factors should a farmer consider when selecting materials for constructing a dairy cattle shed. (10 marks)

This image shows a full page of white paper with horizontal dashed lines, typical of primary-ruled notebook paper. The lines are evenly spaced and run across the width of the page. There are no margins, text, or other markings present.

(b) Explain the limitation of tractor power in farm mechanization. (10 marks)

[illegible]

22 (a) Describe foot rot disease under the following sub-headings

(i) Causal organism.

(1 mark)

.....

(ii) Signs of infection

(5 marks)

.....

.....

.....

.....

.....

(iii) Control measures

(4 marks)

.....

.....

.....

.....

.....

(b) Describe the life cycle of a named tapeworm (*Taenia spp.*). (10 marks)

.....

.....

.....

.....

.....

.....

.....

.....

.....

.....

23.(a). Explain **five** precautions taken by dairy farmers to ensure clean milk production.

(10 marks)

.....

.....

.....

.....

.....

.....

.....

.....

.....

.....

.....

.....

(b). Explain the uses of the various hand tools in the construction of a Kenya Top Bar Hive.

(5 marks)

.....

.....

.....

.....

.....

- (c) Describe the management practices that ensure proper hygiene in a deep litter poultry house.  
(5 marks)

.....

.....

.....

.....

.....

.....

.....

.....

.....

.....

.....

.....

.....

.....

.....

**THIS IS THE LAST PRINTED PAGE**

