



KPSEA ALL STRANDS AND SUBSTRANDS TOPICALS



GRADE 6 TOPICAL QUESTIONS

SCIENCE & TECHNOLGY

VOLUME 1

A Series of Revision Assessment Questions for each and every Strand & Sub-Strand prepared by top KPSEA KNAC Examiners.

Perhaps, The questions are meant to enhance the learners' content mastery and revision purposes as well



***For Marking Schemes Contact [0724333200](tel:0724333200) /
[0768321553](tel:0768321553) or***

Order online at:

www.kenyaeducators.co.ke

KENYA EDUCATORS CONSULTANCY



GRADE 6 TOPICAL REVISION QUESTIONS.

SCIENCE AND TECHNOLOGY.

MODEL TOPICAL ASSESMENTS

ASSESSMENTS

ASSESSMENT 1

1. The green coloring matter in plants is known as (1 mark)
2. State four useful non-green plants. (4 marks)
3. State two harmful non-green plants.(2 marks)
4. Draw a diagram of (8marks)
 - a) Tap root
 - b) Fibrous root
5. Categorize five common invertebrates (5 marks)
6. Write four components of blood.
7. Write two functions of plasma.
8. Draw and label the male reproductive system. (4 marks)
9. Write three importance of invertebrates. (3 marks)
10. Explain the following terms. (6 marks)
 - (a) Translucent
 - (b) Transparent
 - (c) Opaque
11. Draw and explain regular reflection. (6 marks)



MINISTRY OF EDUCATION



CBC GRADE 6 ALL STRANDS & SUBSTRANDS REVISION QUESTIONS

ASSESSMENT 2

1. State two functions of
 - a) Roots
 - b) Stem
2. List five classification of food crops.
3. Draw and label parts of a bee.
4. Explain using the diagrams the process of absorption and transportation of water and mineral salts in a plant
- 5 & 6. Write down two safety precautions while handling invertebrates
7. Write five characteristics of insects
8. Match the following with its classification

invertebrate	Classification
earthworm	Myriapods
snail	Worms
Centipede	Insects
Weevils	Mollusk
Spider	arachnids

9. The main blood vessels are ;
10. Define the following terms
 - (a) Universal donor
 - (b) universal recipient
11. State the ways of conserving water.
12. Write three properties of light.

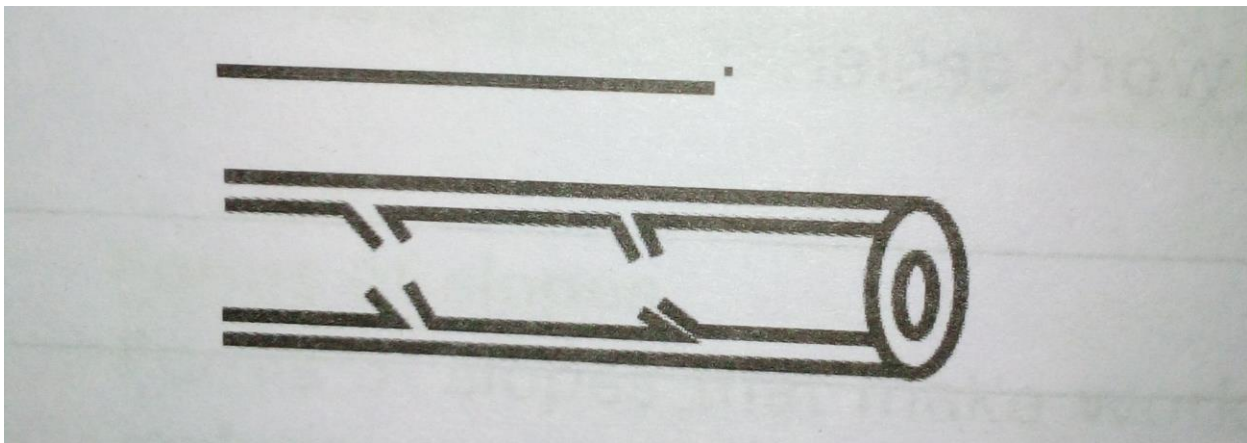


CBC GRADE 6 ALL STRANDS & SUBSTRANDS REVISION QUESTIONS

ASSESSMENT 3

1. Write five sources of water.
2. State four physical development in boys.
3. Which of the following statements about the female reproductive system are true or false?
 - a) Fertilization of egg by the sperm takes place in the oviduct
 - b) The ovary produces ova
 - c) The fertilized egg develops into a fetus in the cervix
 - d) A woman has three ovaries
 - e) The birth canal is also known as Vagina

4. a) The following blood vessel is called



- b) Write the characteristics of the above blood vessel
5. Name major parts of the female reproductive system



MINISTRY OF EDUCATION



CBC GRADE 6 ALL STRANDS & SUBSTRANDS REVISION QUESTIONS

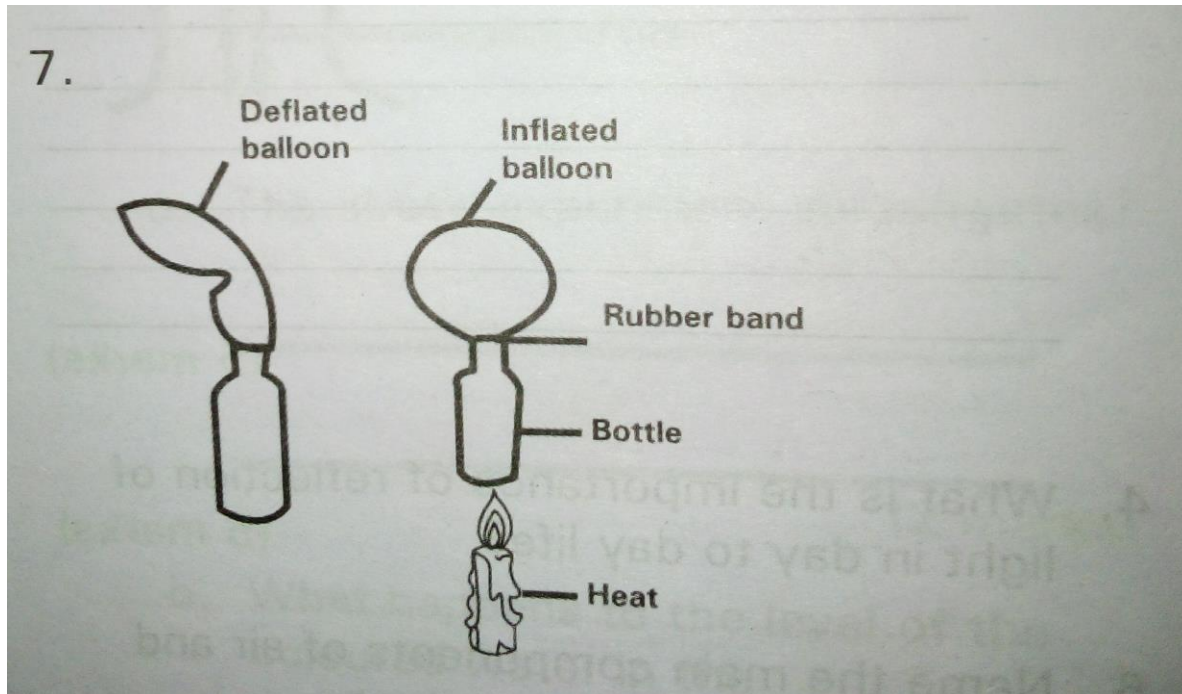
6. Define and state the functions of the following
 - (a) Ovaries and its functions
 - (b) Oviduct and its functions
 - (c) Cervix and its functions
 - (d) Vagina and its functions
7. Draw and name the parts of a plant. (10 marks)
8. State the differences between tap roots and fibrous roots. (8 marks)

ASSESSMENT 4

1. Write four characteristics of spiders and ticks. (4 marks)
2. Write the differences between arteries and veins. (4 marks)
3. Define and state the functions of the male reproductive system.
 - (a) Penis and its function
 - (b) Testicles and its function
 - (c) Urethra and its function
 - (d) Glands and its function
 - (e) Sperm duct and its function
- 4 State the physical changes in girls. (5 marks)
5. State ways of reducing amount of water used for different activities.
6. Write steps of creating spreadsheet document.
- 7



CBC GRADE 6 ALL STRANDS & SUBSTRANDS REVISION QUESTIONS



The above experiment demonstrates the expansion and contraction in gases.

What is the conclusion?

8. How is expansion and contraction applied in everyday life?

9. Write 'true' or 'false'

- (a) Materials that allow light to pass through are opaque
- (b) Light travels in a straight line
- (c) Materials that allow light to pass through are translucent
- (d) A mirror that curves inwards is a convex mirror
- (e) A mirror that curves inwards is called a concave mirror

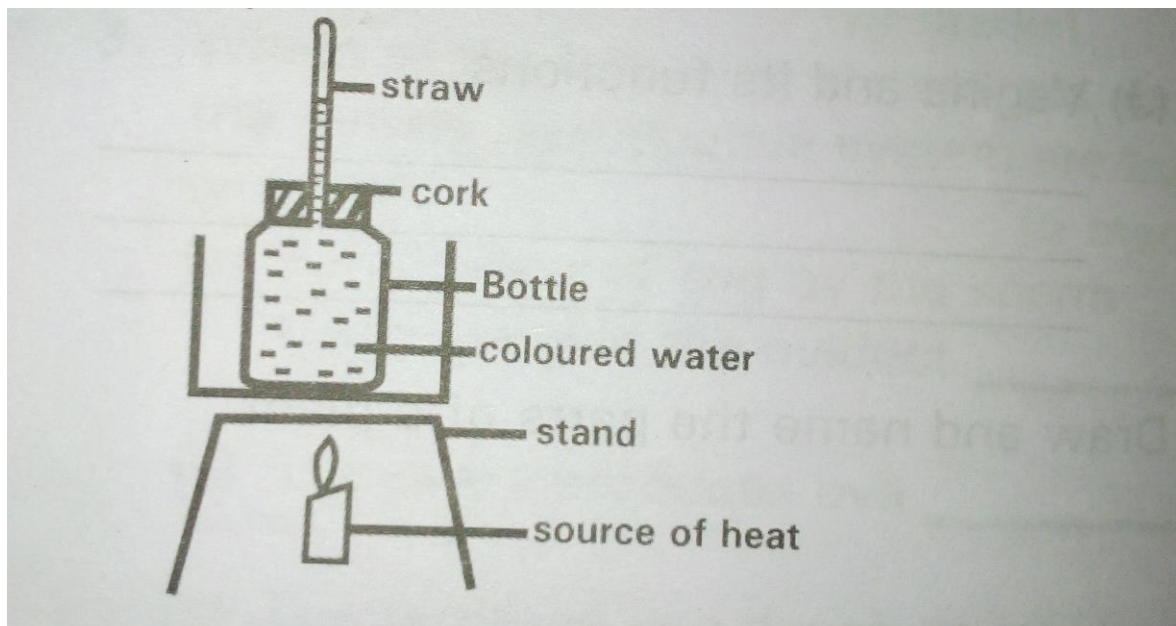
10. Write advantages of friction, (3 marks!)



CBC GRADE 6 ALL STRANDS & SUBSTRANDS REVISION QUESTIONS

ASSESSMENT 5

1. What are disadvantages of friction?
2. Write examples of inclined planes
3. What the local materials required for construction of a simple slope
4. What is the importance of reflection of light in day to day life?
5. Name the main components of air and represent them in a pie chart
6. Write functions of the following
 - (a) Nitrogen
 - (b) Oxygen
 - (c) Carbon dioxide
 - (d) Inert gases
- 7 The experiment below was set to investigate expansion and contraction in liquids





MINISTRY OF EDUCATION



CBC GRADE 6 ALL STRANDS & SUBSTRANDS REVISION QUESTIONS

What are the conclusions?

8 Write five groups found in a ribbon spreadsheet

9. Name some items used for hygiene

ASSESSMENT 6

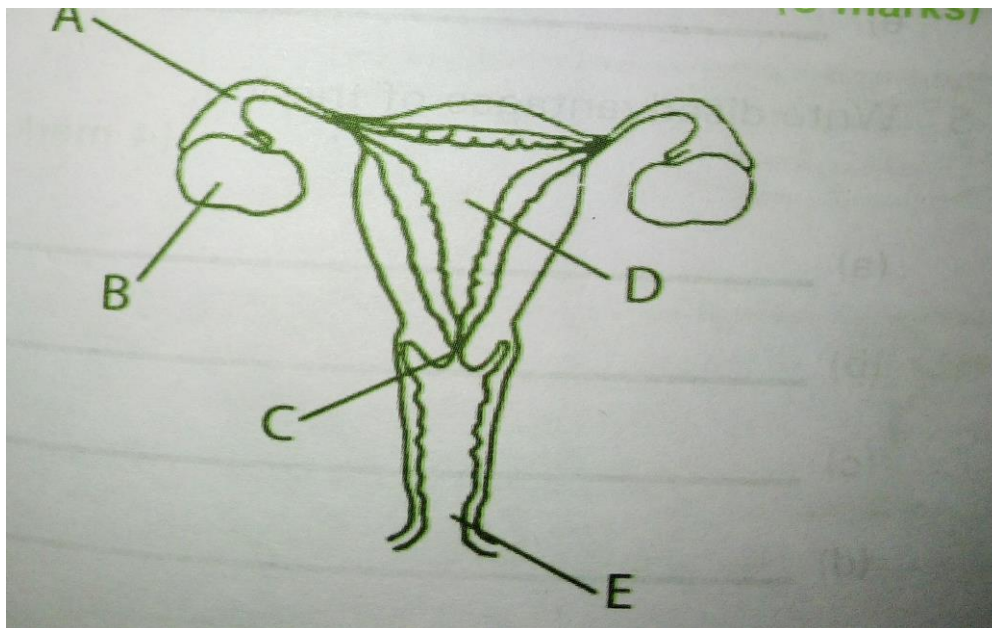
1 What is water conservation?

2 How is water conserved in our locality?

3. Name blood groups in blood transfusion.

4. Which physical changes occur in girls during adolescence?

5. The diagram below shows the female reproductive system. Name the parts labeled A B C D and E.





MINISTRY OF EDUCATION



CBC GRADE 6 ALL STRANDS & SUBSTARNDNS REVISION QUESTIONS

6

(a)

(b)

(c)

(d)

(e)

7. Write steps on how to create a spread sheet document? (5 marks)

8. Create a spreadsheet document and key in the following data.

Table B

month	amount
June	548
July	237
August	863
September	562
October	237

a. Bold the words 'month' and 'amount'

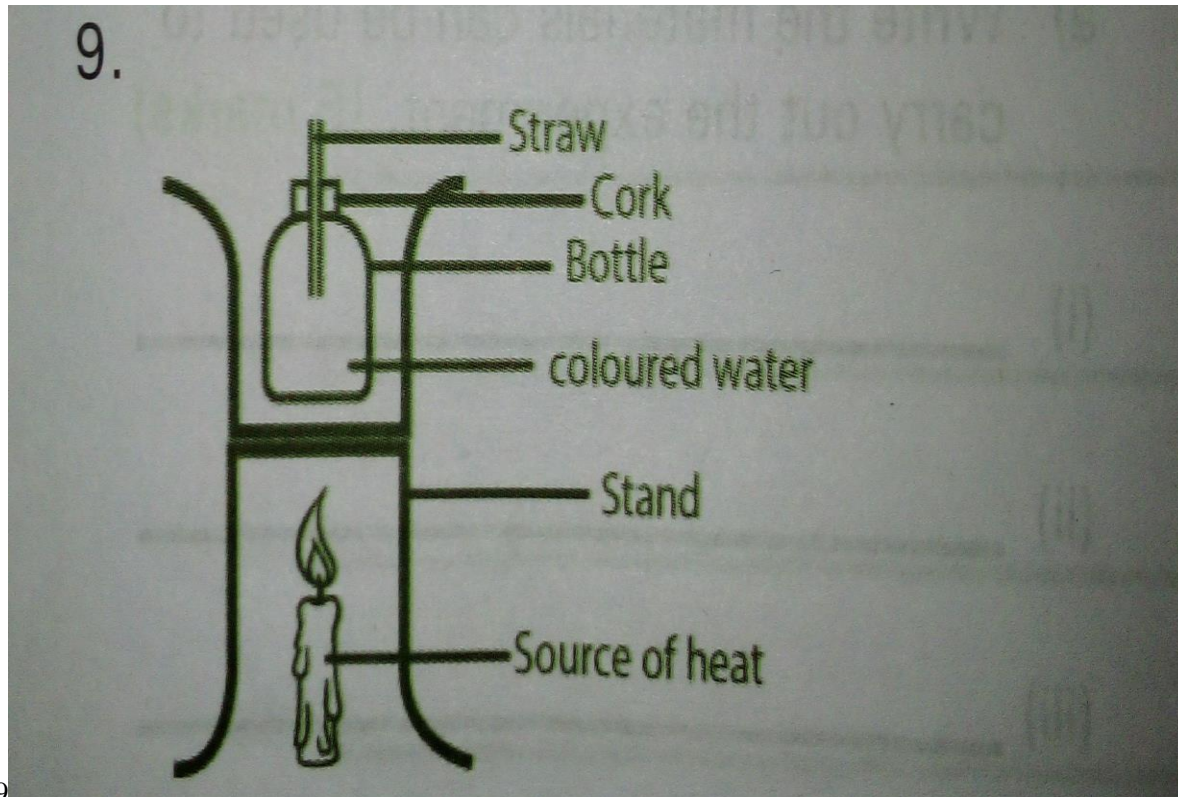
b. Delete the word 'October' replace it with word 'November'.

c. Change all the amounts to be italics and put them in blue colour.

d. Sort the numbers from the smallest to the largest



CBC GRADE 6 ALL STRANDS & SUBSTRANDS REVISION QUESTIONS



- a. The above experiment investigates? (2 marks)
- b. What happens to the level of the coloured water in the (2 marks)
- c. What conclusion do we draw from the above experiment (5 marks)
10. Draw and label a pie chart showing percentage composition of air



CBC GRADE 6 ALL STRANDS & SUBSTRANDS REVISION QUESTIONS

ASSESSMENT 7

1, Write True or False in the following statements.

- a) Solids contract when heated
- b) Gases contract when cooled
- c) Liquids expand when heated

2. Grade 6 learned in Nyathuna Primary School wanted to carry out an experiment to demonstrate contraction and expansion of solids.

- a) Write the materials can be used to carry out the experiment. (5 marks)
- b) Write the steps to follow to carry out the experiment. (5 marks)
- c) State the observation of the experiment. (5 marks)

3, What is friction

4. Write advantages of friction.

- a)
- b)
- c)
- d)
- e)

5. Write disadvantages of friction.

- (a)
- (b)
- (c)
- (d)
- (e)

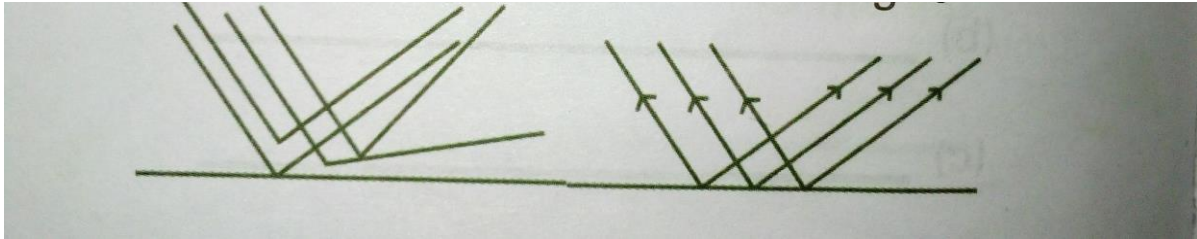
6. The following is reflection of light



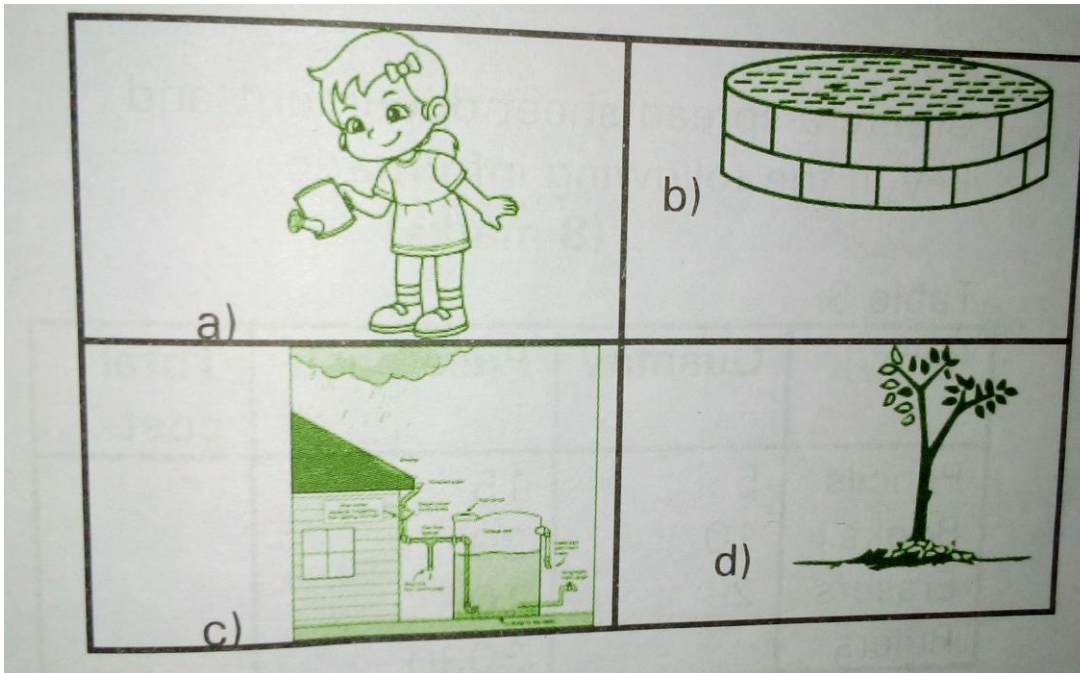
MINISTRY OF EDUCATION



CBC GRADE 6 ALL STRANDS & SUBSTRANDS REVISION QUESTIONS



- a) This is called
- b) Name objects that have the above reflection of light.
- 7. Draw and name three forms of slopes that make work easier
- 8. Write uses of spread sheets in everyday life
- 9. Identify the methods of conserving water in the diagram below.

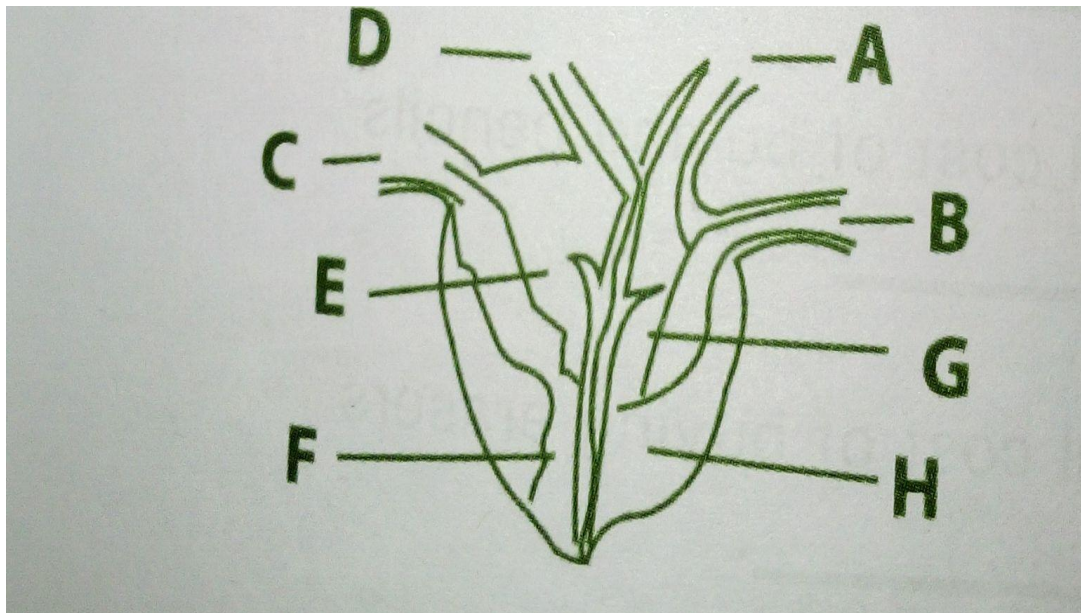




CBC GRADE 6 ALL STRANDS & SUBSTRANDS REVISION QUESTIONS

ASSESSMENT 8

1. Name the following internal parts of the heart. (8 marks)



2. Draw and Name components of blood and state one function (8 marks)

3 Write down the classification of invertebrates

4 State four characteristics of myriapods (4marks)

5 Name different types of plants in your locality. (5 marks)

6.

7.

8.

9.

10. Draw and name parts of a plant.

11. Write three functions of

(a) roots

(b) stem



MINISTRY OF EDUCATION



CBC GRADE 6 ALL STRANDS & SUBSTRANDS REVISION QUESTIONS

12. Differentiate between taproots and fibrous roots.

Tap roots

Fibrous roots

ASSESSMENT 9

1. Write down two safety measures that should be observed while collecting plants in the environment. (2 marks)

2. Write True or False in the following statements

a) Taproots have lateral roots rising from main roots

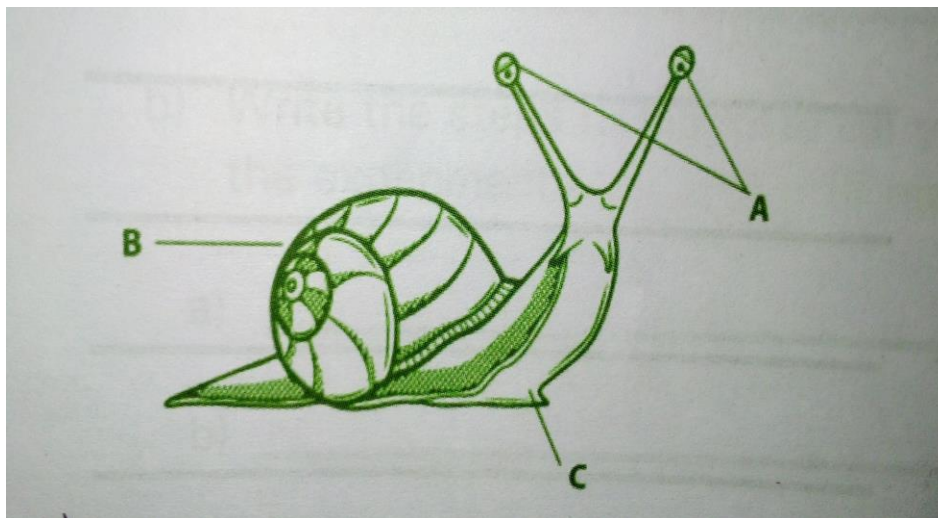
b) Fibrous roots have main root

c) Tap roots grow horizontally

d) Fibrous roots grow vertically

e) Tap roots are shallow

3. Name the following parts of a snail





MINISTRY OF EDUCATION



CBC GRADE 6 ALL STRANDS & SUBSTARND S REVISION QUESTIONS

4. Draw a diagram of human blood circulatory system and explain how it functions. (10 marks)
5. Write down two differences of arteries and vein. (4 marks)
6. Write functions of the following (5 marks)
- (a) Urethra
 - (b) Testis
 - (c) Penis
 - (d) Glands
 - (e) Spermducts
7. Write different ways we can re-use water
- 8 Create a spread sheet document and key in the following information

Item	Quantity	Price each	Total cost
Pencil	5	15	
Books	10	20	
Eraser	2	10	
Rulers		3030	

- a) The total cost of buying book
 - b) The total cost of buying pencils
 - c) The total cost of buying erasers
 - d) The number of quantity of rulers that were bought
9. Why are gaps left in between railway tracks?
- 10 Name the component of air that is involved in the following
- a. Photosynthesis
 - b. making fertilizers
 - c. breathing
 - d. combustion
11. Write down two areas where reflection of lights applied in our day to day life

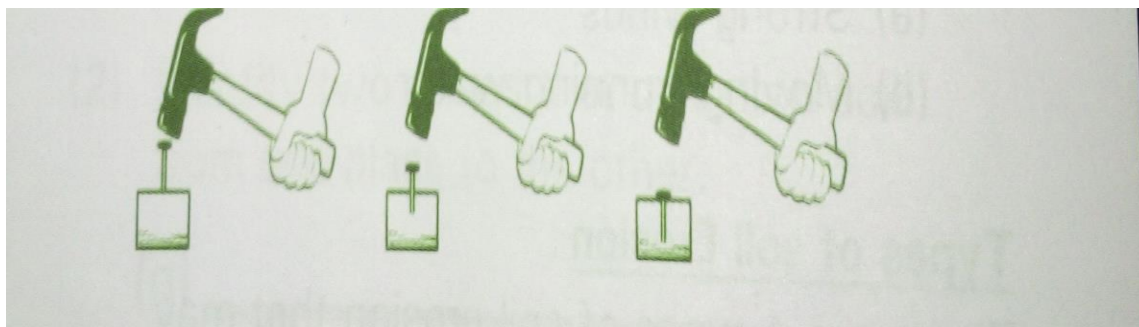


CBC GRADE 6 ALL STRANDS & SUBSTRANDS REVISION QUESTIONS

ASSESSMENT 10

1. Write the name given for the following.
 - a) Materials that allow light to pass through
 - b) Materials that do not allow light to pass through
 - c) Materials that allow some light to pass through
2. What is a slope?
3. How do slopes make work easier?
4. Write forms of slopes that make work easier. (3 marks)
5. Mungi is a truck driver. He loads his truck by carrying boxes on his back.
What advice would you give him to make work easier?
6. How can friction be reduced
7. Write down three ways in which friction is used in your home.
8. Name the main components of air. (4 marks)
9. Name two uses of Oxygen. (2 marks)

10. The experiment below shows expansion and contraction of solids using nail.





MINISTRY OF EDUCATION



CBC GRADE 6 ALL STRANDS & SUBSTRANDS REVISION QUESTIONS

a) Write down the materials required for the above experiment.

b) State the observation and conclusion made.

11. What is a personal assessment portfolio (2 marks)

12. What information can be included in a personal assessment portfolio? (5 marks)