



KPSEA ALL STRANDS AND SUBSTRANDS TOPICALS



GRADE 6 TOPICAL QUESTIONS

MUSIC

VOLUME 1

A Series of Revision Assessment Questions for each and every Strand & Sub-Strand prepared by top KPSEA KNAC Examiners.

Perhaps, The questions are meant to enhance the learners' content mastery and revision purposes as well



***For Marking Schemes Contact [0724333200](tel:0724333200) /
[0768321553](tel:0768321553) or***

Order online at:

www.kenyaeducators.co.ke

KENYA EDUCATORS CONSULTANCY



GRADE 6 TOPICAL REVISION QUESTIONS.

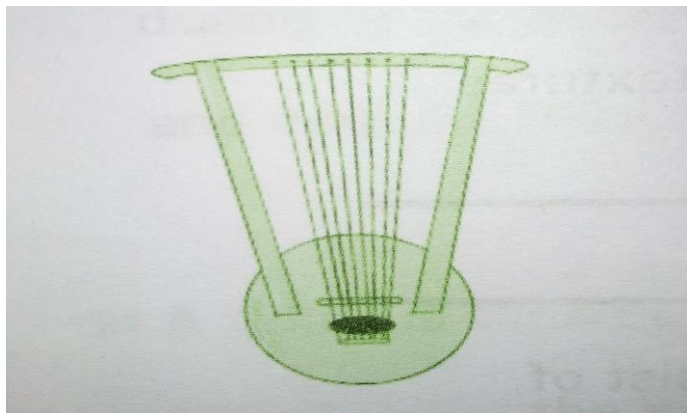
MUSIC.

MUSIC MODEL TOPICAL TEST PAPERS

MODEL PAPERS

MODEL PAPER 1

- 4) Religious songs are also called ___ songs.
- 9) A ___ is a musical sentence of idea.
- 3) ___ means gradually getting louder or gradually increasing the volume.
- 4) ___ is a two part songs performed by two people each singing different voice part.
- 3) ___ is the proper pronunciation of words when singing.
- 6) What are the feature of folk songs
 - (a)
 - (b)
 - (c)
- 7) Name the stringed instrument and the community that it originated from



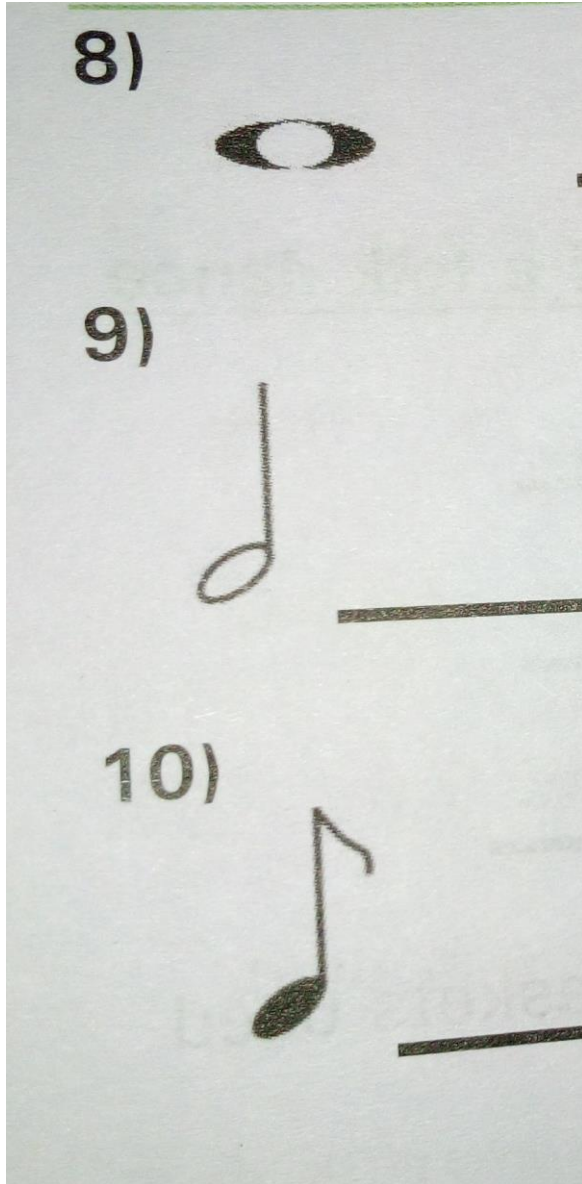


MINISTRY OF EDUCATION



CBC GRADE 6 ALL STRANDS & SUBSTRANDS REVISION QUESTIONS

Name the notes below



- 8)
- 9)
- 10)



CBC GRADE 6 ALL STRANDS & SUBSTRANDS REVISION QUESTIONS

MODEL PAPER 2

1) Name ways of playing a fiddle

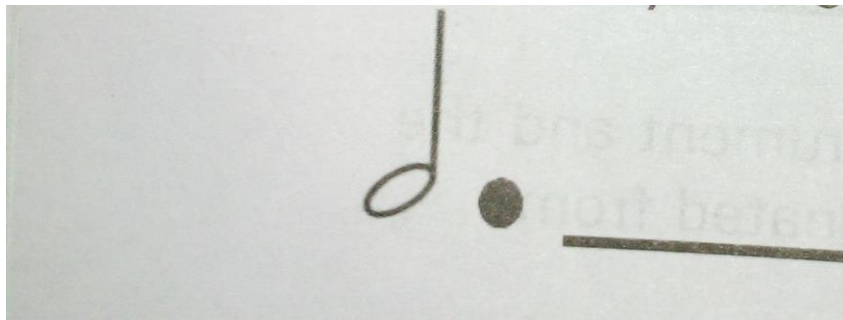
- (a)
- (b)
- (c)

2) Identify various types of songs

- (a)
- (b)
- (c)
- (d)
- (e)

3) How many counts are in a crotchet?

4) French rhythm of a dotted minim is



5) Name two types of textures

6) A B C structure consist of ___ sections

List an 3 economic benefits of a folk dance

- 7)
- 8)



MINISTRY OF EDUCATION



CBC GRADE 6 ALL STRANDS & SUBSTRANDS REVISION QUESTIONS

9)


10) Pots, cooking sticks, ball, baskets used in dances are called ____

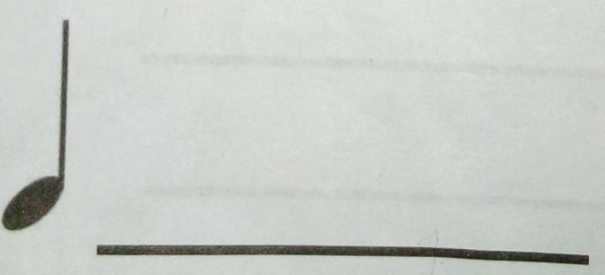
MODEL PAPER 3

1) Tempo refers to ____ in music

2) The loudness or softness of a piece of music is called ____

Give the French rhythm of

3)  (5)

4)  (5)

(d)

(b)

(b)

(a)

3)

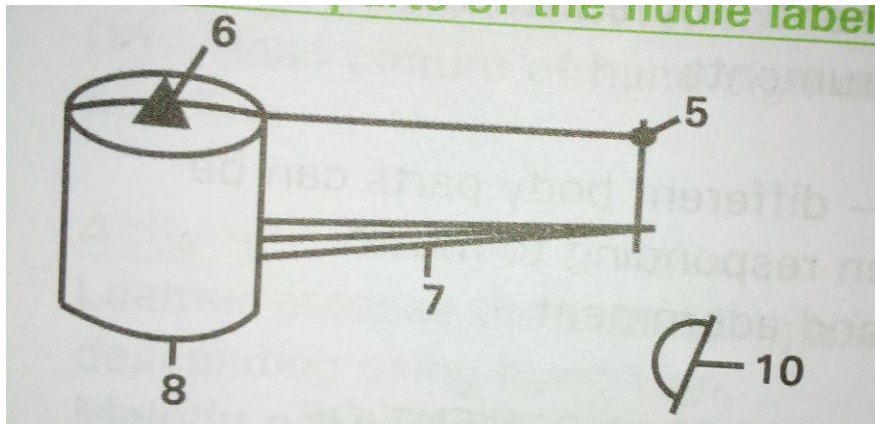
4)



MINISTRY OF EDUCATION



CBC GRADE 6 ALL STRANDS & SUBSTRANDS REVISION QUESTIONS



Name the parts of the fiddle labeled 5-10

- 5)
- 6)
- 7)
- 8)
- 9)
- 10)

MODEL PAPER 4

1) List down components of a folk dance (a)

- (b)
- (c)
- (d)

2) We use a bow for ____ a fiddle.

Complete the table



MINISTRY OF EDUCATION



CBC GRADE 6 ALL STRANDS & SUBSTARNDNS REVISION QUESTIONS

String instrument. community of origin

3) Nyatiti

4) Uta

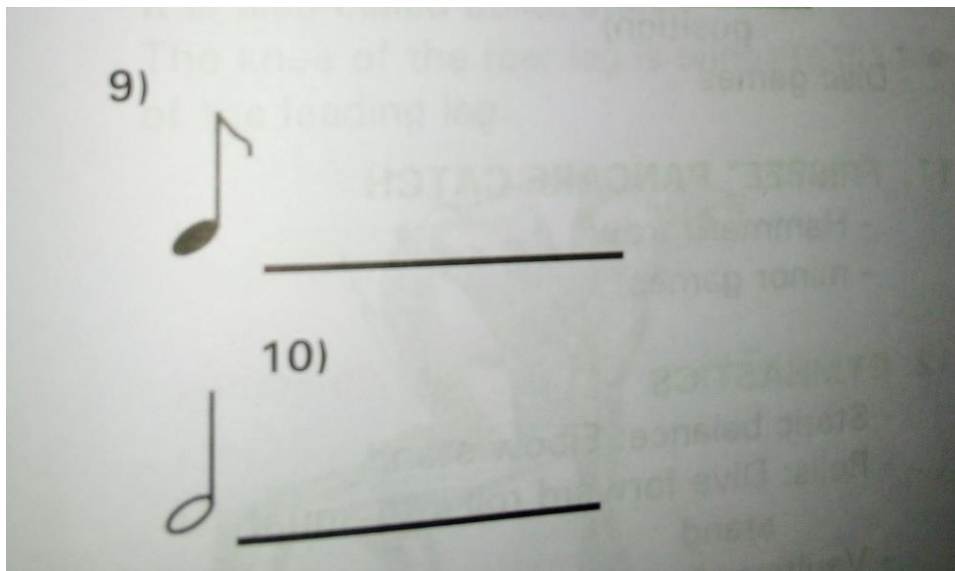
5) Pukan

6) Direction given to the performer to guide their performance are called___

7) Identify the 4 voice parts

g) Three performers singing in 3 different voices apart, together they create___

Draw the rest of the following notes



9)

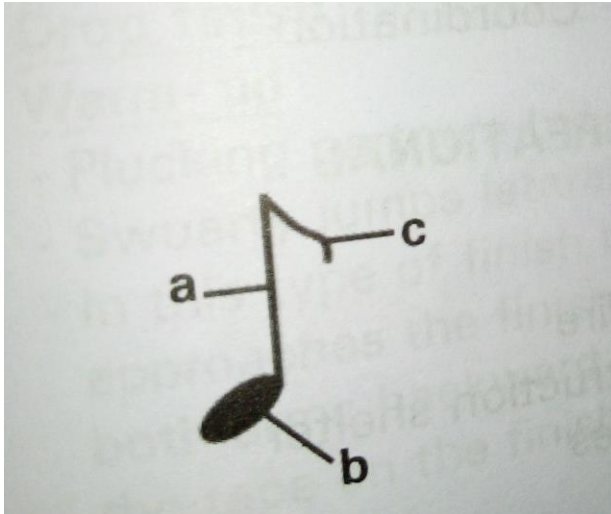
10)



CBC GRADE 6 ALL STRANDS & SUBSTRANDS REVISION QUESTIONS

MODEL PAPER 5

- 1) Which musical note is half the value of | the semibreve?
- 2) Name the parts of note below



- 3) The French rhythm name for a dotted / minim is ____
- 4) Write the C major scale in ascending order
- 5) ____ means gradually getting softer or gradually decreasing in volume.
- 6) ____ flock songs are performed during religious ceremonies to praise GOD and educate believers about GOD.
- 7) A fiddle is tuned by ____ or ____ the tuning peg.
- 8) The apostrophe placed after a note shows that it is ____ in pitch.
(higher, lower, medum)
- 9) A major scale consist ____ sol-far syllables.
- 10) Name any modern stringed instrument