



Ūvuku ya ngewa

5



★ Mũeni na Katoonu

★ Kĩmeu na Kasũkũ



Primary Math and Reading (PRIMR) Initiative

Kikamba

Művea

- Ministry of Education, Science and Technology (MoEST)
- UK Department for International Development (DFID)
- RTI International
- SIL LEAD

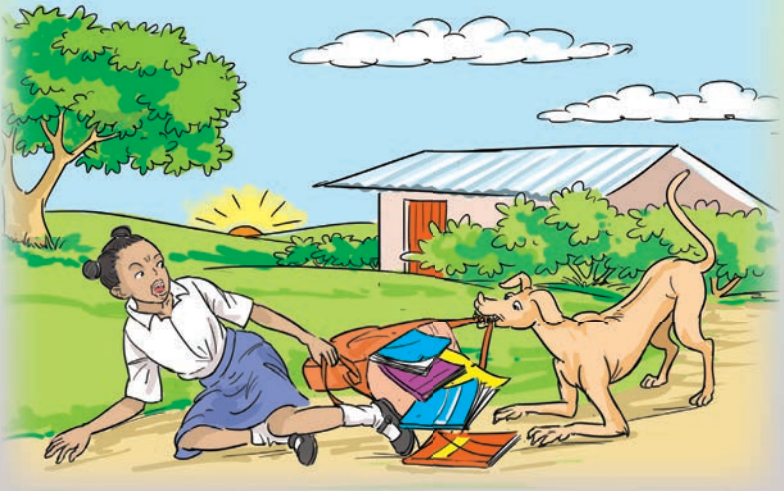
Mūeni na Katoonu

Mūandiki: *Tabitha N. Mūsaū*

Mūsoli: *Simon Ndonye*

Mūsyĩ kwaa Mūeni ve ngitĩ
yītawa Katoonu. Mūthenya
ũmwe Mūeni aendete sukulu
Katoonu nīwamūatĩie.





Na ãndĩ Katoonu amũvĩla Mũeni
avalũka nthĩ.

Na Katoonu aũma mũvuko wa
mavuku nake Mũeni aũkusya.

Makusanĩsya mũvuko nginya
mavũku mavalũka nthĩ.

Nake Mūeni aua mbu, “Uui!
Uui! Nau wakwa! Mūvuko
wakwa nīwooswa nī Katoonu.”
Nīvo ĩthe wa Mūeni wookie
asembete.



Īthe nīwoosie mavuku
amūnenga Mūeni. Na Mūeni
athi Sukulu e mūtanu mūno.
Nake Katoonu asemba aūmīte
mūvuko athi mūsyī.



Mokūlyo

1. Ngitī ya kwaa Mūeni yītawa ata?
2. Ngitī yeekie ata?
3. Īthe wa Mūeni ookie asembete nīkī?
4. Mūeni aendie sukulu e mūtanu nīkī?

Kīmeu na Kasūkū

Mũandīki: *Tabitha N. Mūsāũ*

Mūsoli: *Simon Ndonye*

Kīmeu asomeaa sukulu yītawa
Kĩatinenĩ.

Mũthenya ũmwe aendie sukulu
akuĩte lĩu wĩ mũkevenĩ wa
kasūkū.

Na ĩndĩ aĩlika kĩlasinĩ kasūkū
kavalũka.

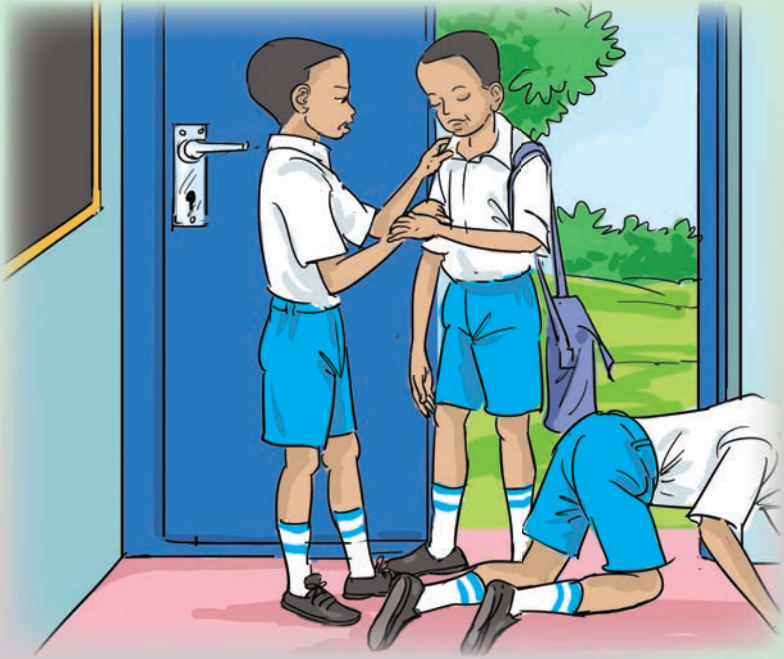




Na yu lĩu wa Kĩmeu wetĩka
ambĩĩa kũĩa.

Na syana ila ingĩ syeew'a aiĩa
syooka isembete.

Yĩla syana syoonie vala lĩu
wa Kĩmeu wetĩkĩte, syambĩĩa
kũvakũa iiya.



Īndī Kīmveli, mūnyanyae wa
Kīmeu amwīa aeke kūīa.

Na amwatha kūmūolela līu saa
sya ūya syavika.

Kīmeu nīweewie mūyo na oosa
mūkeve wake wa kasūkū aia.

Mokūlyo

1. Sukulu ya Kīmeū yeetawa ata?
2. Nī kyaū kyeekīkie Kīmeū aīlika kīlasinī?
3. Syana ila ingī syeew'a Kīmeu aiīa syeekie ata?
4. Mūnyanyae wa Kīmeu eetawa ata?
5. Kīmeu eew'ie mūyo nīkī?

★ Mũeni na Katoonu

★ Kĩmeu na Kasũkũ

Mavuku ma PRIMR maandikitwe kwa nzĩa yĩ mwanya nĩ kana matetheesye syana sya kĩlasi kya mbee na kya kelĩ mendeewe nĩ kũneena, kũsoma na kũandika kĩkamba.

Ngewa ila syĩ mavukuni aa nĩsyautetheesya syana syende kũsoma kĩkamba nza wa kĩlasi na kũlilikana kĩla masoma. Mavuku aa nĩmailite kwa asomi ma kĩkamba kwa ũndũ maandikitwe matetheesye ũmanyisyani wa kĩthyomo kya kĩkamba.

Kwĩanisa maundu aa oonthe, ngewa ila syi mavukuni aa nĩsuaniite:

- Kũtũmia kĩthyomo kĩvuthu na kila kĩna mĩsoa mĩkuvi.
- Mavisa mena langi mũseo na maitavanitye ngewa yonthe ĩndi matũmiitwe kunenga syana mea ma kwenda kũsoma kĩla kĩ ngewani ĩsu.
- Kĩthyomo kĩvuthu kwa kũelewa ĩndi kĩtuma syana syi sily'a muno yĩũlu wa kila ma soma.

Mavuku ala angĩ nĩ:

- *Kĩla Kĩtumaa Ndunduli Īũlũka Ūtukũ na Kavalũkũ na Mbiti*
- *Kĩmena kya Ngũkũ na Ndiũ na Wambũa na Nyũnyi*
- *Kũkũaniwà Īkwasi na Waliku na Ūwau wa Mũthelo*
- *Mbiti Īendaa Īithua Nĩkĩ? na Nguu na Ndiũ*
- *Mũeni na Katoonu na Kĩmeu na Kasũkũ*