

ALL SUBJECTS



THE KENYA PRIMARY SCHOOL EDUCATION ASSESSMENT

KPSEA 2023 EXAMINER FINAL PREDICTION

A KPSEA 2023 PREDICTION WITH PRECISION

This PDF Comprises of Expected KPSEA 2023 Questions prepared by a panel of top KNEC writers. All the KPSEA 2023 Candidates are advised to take the prediction questions therein seriously!

**For Complete Blue print analysis &
Marking Schemes Contact**

0724333200/ 0795491185

Mr Machuki

Confidential!!!

*Kenya Educators Consultancy Wishes all the KPSEA 2023 Candidates
the best of Luck ahead of the KPSEA National Exams.*



317083

©2023 The Kenya National Examinations Council



Turn over



KENYA PRIMARY SCHOOL EDUCATION ASSESMENT
KPSEA 2023 EXAMINER FINAL PREDICTION

ENGLISH

Time: 1 hour 40 Minutes

READ THESE INSTRUCTIONS CAREFULLY.

1. You have been given this question booklet and a separate answer sheet. The question bookier contains 30 questions.
2. Do any necessary rough work in this booklet.
3. When you have chosen your answer, mark it on the **ANSWER SHET**, not in the question paper.

HOW TO USE THE ANSWER SHEET.

4. Use an ordinary pencil only.
5. Make sure that you have written on the answer sheet.

YOUR INDEX NUMBER

YOUR NAME

NAME OF YOUR SCHOOL

6. By drawing a **dark line** inside the correct numbered boxes mark your full index number (i.e. school code Number and the three -figure candidate's Number) in the grid near the top of the answer sheet.
7. Do not make any marks outside the boxes.
8. Keep your answer sheet as clean as possible and Do not fold it."
9. For each question 1-30 four answers are given. The answers are lettered A, B, C, D. In each case Only One of the four answers is correct. Chose the correct answer.
10. On the answer sheet show the correct answer by drawing a dark line inside the box in which the letter you have chosen is written.
11. Your dark line Must be within the box. Make your line as dark as possible.
12. For each question **Only One box** is to be marked in each set of four boxes.

Candidates should check the question papers to ensure that all questions are printed.



Read the story below and answer the questions 1 to 5.

Something very strange happened to Mary. She never knew she had a twin sister until she started university! Mary was born in Ugenya. Her parents could not look after her so she went to live with a family member in Nairobi. When Mary was 20 years old, she started university in Kiambu County. She enjoyed her university life. But one day as she was walking home from class, a student smiled at her.

"Hello, Lucia!" said the student. "I'm not Lucia," said Mary.

This happened to Mary again and again. Complete strangers kept calling her Lucia. It was very strange. One day, when a woman called her Lucia, Mary asked "Why do you keep calling me Lucia?" The woman replied, "You look like my friend Lucia. You have the same face and the same hair. "Is Lucia your sister?" Mary said that she did not have any sister called Lucia. But she was interested in this girl who looked like her. Finally, she asked someone for Lucia's email address.

When Mary wrote to Lucia, she found out that they both had the same birthday, they looked alike and both of them were from Ugenya. When Mary went to live with the family member in Nairobi, Lucia moved to Meru, where she lived with another family member there. It had to be true! Mary and Lucia were twin sisters!

Questions

1. What did Mary's parents do when they gave birth to their daughters? They
 - A. moved from Ugenya
 - B. sent them away
 - C. left their country
 - D. lived with their daughters
2. When did Mary write to Lucia?
 - A. After she spoke to her friends.
 - B. When she received her email.
 - C. After she met her at the university.
 - D. While at her parents' home.
3. Where was Mary and her sister born? In
 - A. Kiambu
 - B. Meru



- C. Nairobi
 - D. Ugenya
4. Why did Lucia's friends think that Mary was her sister?
- A. She was the same age
 - B. She spoke like her
 - C. She resembled her
 - D. She was seen walking with her in the university.
5. What didn't Mary know at last?
- A. Where she was born
 - B. Her birthdate.
 - C. She had a twin sister
 - D. She had many parents

Read the following passage and answer questions 6 to 10.

The owner of a missing puppy is asking for help. "My baby has been missing for over a month now, and I want him back so badly," said Mrs. Naliaka, a fifty-six-year-old woman. Mrs. Naliaka lives by herself in a trailer park near the park. She said that Clyde, her one-year-old puppy, didn't come home for dinner more than a month ago, so she called the police. When the policeman asked her to describe Clyde, she told him that Clyde had beautiful green eyes, had all his teeth but was missing half of his left ear, and was completely white. She then told the officer that Clyde was about a foot high.

A bell went off. "Is Clyde your child or your pet?" the officer suspiciously asked, "Well, he's my puppy," Mrs. Naliaka replied. "Lady, you're supposed to report missing PERSONS, not missing DOGS," said the irritated policeman. "Well, who can I report this to?" She asked. "You can't. You have to ask around your neighborhood or put-up flyers," replied the officer.

Mrs. Naliaka figured that a billboard would work better than a piece of paper on a telephone pole. There was an empty billboard at the end of her street just off the roundabout on the highway. The bill board had a phone number on it. She called that number, and they told her they could blow up a picture of Clyde from Mrs. Naliaka's picture album and put it on the billboard for all to see. "But how can people see it when they walk by on the roundabout?" She asked. "Oh, don't worry, ma'am, the roundabout is so full of commuters that no one moves." They told her it would cost only three thousand two hundred and three shillings a month.



The month has passed, but Clyde has not appeared. Because she has almost no money in savings, Mrs. Naliaka called the local newspaper to see if anyone could help her rent the billboard for just one more month. She is waiting but, so far, no one has stepped forward.

Questions

6. Mrs Naliaka lost her puppy. A puppy is a young one of a
 - A. cat
 - B. dog
 - C. donkey
 - D. cattle
7. Which one of the following is the best description of Clyde?
 - A. Had beautiful green eyes.
 - B. Was a three-year-old puppy.
 - C. Was completely dark.
 - D. Was about two foot high
8. What was Mrs. Naliaka advised to use?
 - A. Magazine
 - B. Poster
 - C. Flyers
 - D. Billboard
9. How much did the bill board cost her for a month?
 - A. Three thousand two hundred and three shillings.
 - B. Three thousand one hundred shillings.
 - C. Nine thousand six hundred and nine shillings.
 - D. Six thousand six hundred and nine shillings.
10. The opposite of the word '**irritated**' as used in the passage is
 - A. annoyed
 - B. angry
 - C. soothe
 - D. lovely

Read the following passage and answer questions 11 to 15.

I haven't always liked dancing. In fact, my parents couldn't get me to go to classes when I was young, no matter how hard they tried. My mum had been a professional dancer and always told me how much I'd enjoy it if I joined a dance



group. Unfortunately, I was very shy as a child and I didn't like to meet new people. I was much happier watching the TV or playing at home with my sister. When my mum tried to get me to attend a dance class I refused.

Soon after I started secondary school, I saw a group of girls dancing to the latest songs in the school gym. They looked really good and I started to take an interest in the class, even though it was just looking through the window at first. Then one day a friend of mine asked me if I wanted to join. I liked the idea of starting with someone I knew. Moreover, we had both danced together for fun at my house or her house, so it didn't seem like such a big step to join a class together.

That was 3 years ago. Since then, I've been going every week and I love it. Sometimes I help teach the classes for the little children. People tell me I'm very good and my teacher has said I should enter local competitions, even ones that could mean you dance on TV.

11. What does the writer say about her parents?
 - A. They loved to dance together.
 - B. One of them was a dancer.
 - C. They tried to teach her how to dance.
 - D. They had a dancing school.
12. When the writer was younger she
 - A. argued with her sister
 - B. met a lot of people
 - C. disliked watching television
 - D. preferred to stay at home.
13. What did the writer do when she started secondary school? She
 - A. suddenly decided to join the dancing class
 - B. watched PE lessons in the gym
 - C. enjoyed watching the dancing class
 - D. liked reading books.
14. Why did the writer decide to join the class?
 - A. She had someone to go with.
 - B. She knew someone who was already going to the class.
 - C. She didn't like dancing at home.
 - D. She was big enough to join.
15. What does the writer say about dancing? She



- A. thinks she is a very good dancer
- B. helps the younger dancers
- C. likes watching ballets on TV
- D. thinks its time wastage.

Read the following passage. It contains spaces numbered 16 to 23. For each blank space choose the correct answer.

If my boat sank, I would try to find an island. I would __16__ there until someone rescued me. I think I __17__ enjoy life on a desert island. I love water sports so I would build a kayak and go __18__ of the island explore all the beaches. Maybe there would be sea lions or sharks! I __20__ swim in the water if I saw a shark. I would __21__ a shelter under a palm tree with a hammock to have a __22__ in. If I __23__ a ship would build a fire on the beach and then the ship would rescue me.

| | A | B | C | D |
|----|----------------|--------------|--------------|---------|
| 16 | lived | lives | live | life |
| 17 | would | wouldn't | will | should |
| 18 | bogie boarding | sea kayaking | scuba diving | jumping |
| 19 | coral | shores | mountains | depths |
| 20 | don't | would | wouldn't | can |
| 21 | make | made | makes | raise |
| 22 | explore | nap | swim | dance |
| 23 | see | saw | wouldn't see | hearing |

Choose the word to complete the following sentences.

24. Fill in the gap with the correct short form.

_____ Kimani present today?

- A. Aren't
- B. Shouldn't
- C. Isn't



- D. Couldn't
25. Use the correct form of the adjective.
The boy is _____ than her cousin
- A. little obese
 - B. least obese
 - C. most obese
 - D. less obese
26. We were able to _____ enough cash for our celebrations.
- A. raise
 - B. compose
 - C. rear
 - D. score
27. Oh _____ No is it raining this early _____
- A. ! ,
 - B. . ?
 - C. ! !
 - D. ! ?

What is the opposite of the underlined word?

28. Parents don't like dishonest pupils.
- A. polite
 - B. humble
 - C. respectful
 - D. honest
29. We should obey senior staff members.
- A. small
 - B. big
 - C. junior
 - D. old
30. Let us dance, _____ ?
- A. shall we
 - B. will we
 - C. don't us
 - D. should us



KENYA PRIMARY SCHOOL EDUCATION ASSESMENT

KPSEA 2023 EXAMINER FINAL PREDICTION

ENGLISH COMPOSITION

Time: 40 Minutes

COMPOSITION

You have 40 minutes to write your composition.

**Below is the beginning of a speech introduced by the school head teacher.
Write and complete the story making it as interesting as you can.**

Hello, learners, welcome back. I hope you had a nice holiday and are ready to work hard this term. I would like you to do your best this term.....





KENYA PRIMARY SCHOOL EDUCATION ASSESMENT
KPSEA 2023 EXAMINER FINAL PREDICTION

INTEGRATED SCIENCE

Time: 1 hour 40 Minutes

READ THESE INSTRUCTIONS CAREFULLY.

1. You have been given this question booklet and a separate answer sheet. The question bookier contains 50 questions.
2. Do any necessary rough work in this booklet.
3. When you have chosen your answer, mark it on the **ANSWER SHET**, not in the question paper.

HOW TO USE THE ANSWER SHEET.

4. Use an ordinary pencil only.
5. Make sure that you have written on the answer sheet.

YOUR INDEX NUMBER

YOUR NAME

NAME OF YOUR SCHOOL

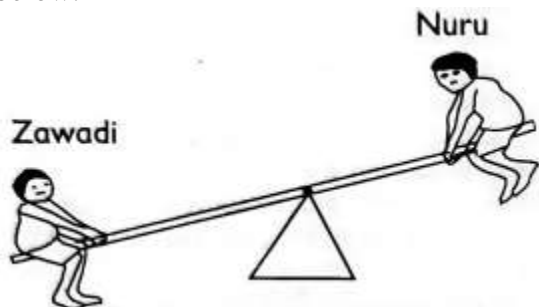
6. By drawing a **dark line** inside the correct numbered boxes mark your full index number (i.e. school code Number and the three -figure candidate's Number) in the grid near the top of the answer sheet.
7. Do not make any marks outside the boxes.
8. Keep your answer sheet as clean as possible and Do not fold it."
9. For each question 1-30 four answers are given. The answers are lettered A, B, C, D. In each case Only One of the four answers is correct. Chose the correct answer.
10. On the answer sheet show the correct answer by drawing a dark line inside the box in which the letter you have chosen is written.
11. Your dark line Must be within the box. Make your line as dark as possible.
12. For each question **Only One box** is to be marked in each set of four boxes.

Candidates should check the question papers to ensure that all questions are printed.



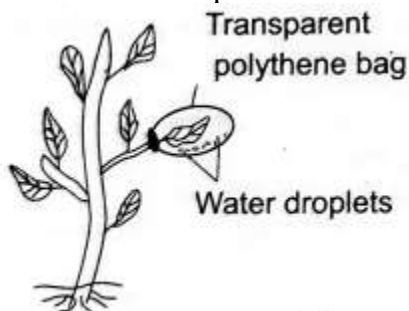
SCIENCE AND TECHNOLOGY

1. Zawadi and Nuru were playing on a seesaw at home. Nuru tried to lift Zawadi as shown below.



From the illustration, it is **true** that;

- A. Both Nuru and Zawadi act as the pivot.
 - B. Nuru acts as the load.
 - C. Nuru acts as the effort.
 - D. Zawadi acts as the fulcrum.
2. Which of the following is **not** a way of reducing air pollution in the environment?
- A. Sprinkling water on earthen floors before sweeping.
 - B. Sprinkling water on dusty grounds.
 - C. Fixing chimneys on the kitchen.
 - D. Fixing sewage pipes that are leaking.
3. Grade 6 learners performed an experiment as shown below.

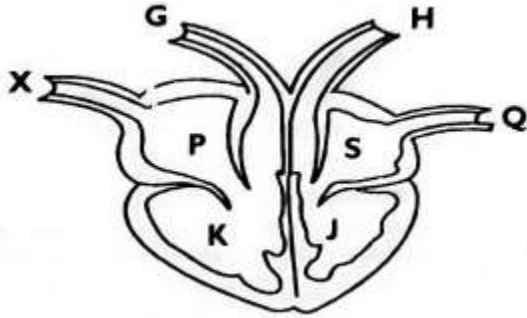


From the experiment, the learners concluded that;

- A. leaves help in photosynthesis.
 - B. leaves help in transpiration.
 - C. leaves help in respiration.
 - D. leaves help in transportation of minerals.
4. Kamwana was asked to name the blood component that transports dissolved components around the body. Which answer was he likely to give?
- A. white blood cells
 - B. plasma
 - C. platelets

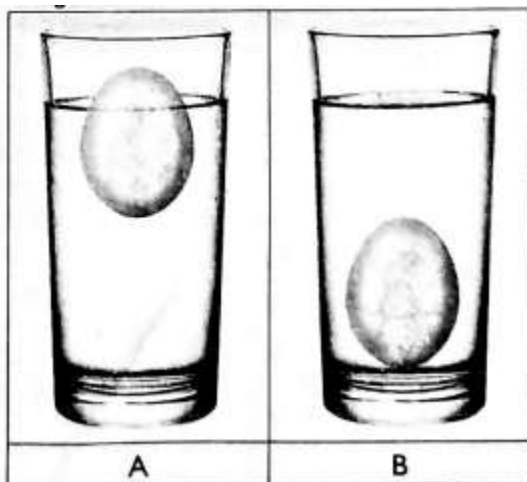
D. red blood cells

Mwanzia downloaded the following picture and displayed it during a science and technology lesson. Use it to answer question 5-7.



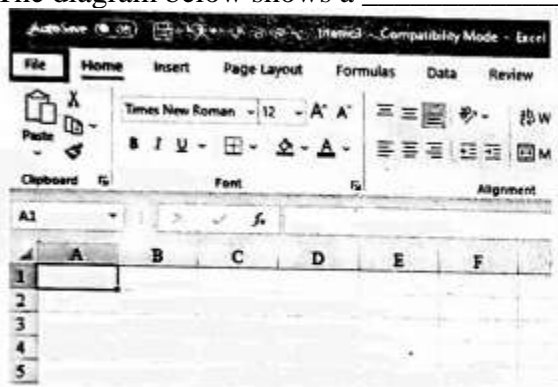
5. Blood is pumped to all parts of the body organs by the contraction of the part labeled _____.
- A. J
 - B. s
 - C. P
 - D. K
6. Deoxygenated blood is received into the heart through the part labeled _____.
- A. X
 - B. Q
 - C. H
 - D. G
7. Blood is pumped through all the parts of the body through the part labeled;
- A. G
 - B. X
 - C. Q
 - D. H
8. Grade 4 learners discovered that an egg sinks in fresh water. The same egg floated on salty water as shown below.





Which factor that affects floating and sinking were they investigating?

- A. material
 - B. shape
 - C. density
 - D. weight
9. Grade 6 learners from a certain academy were asked to mention what they had learnt about snails and slugs. They gave their answers as shown below. Who gave the **wrong** answer?
- A. They have a wet skin and no bones.
 - B. They have a pair of antennae.
 - C. Those that live on land breathe through lungs.
 - D. Their bodies are not segmented.
10. Which of the following statements is **true**?
- A. Blood group A can receive blood from group O and B.
 - B. Blood group B can receive blood from group A and B.
 - C. Blood group AB can receive blood from any of the groups.
 - D. Blood group O can receive blood from group A, B and AB.
11. The diagram below shows a _____.



- A. spreadsheet
- B. power point
- C. word processor

- D. graphics software
12. Which of the following is **not** part of deciduous teeth?
- A. premolars
 - B. molars
 - C. canines
 - D. incisors
13. Kimani observed the following phase of the moon in the sky.



- What is the name given to the phase of the moon?
- A. Waxing gibbous moon
 - B. Waxing crescent moon
 - C. Waning crescent moon
 - D. Waning gibbous moon
14. Tunu put water in a basin and kept it outside in the sun. After an hour, the water was very warm. She used it for bathing. How did the heat from the sun reach the water in the basin?
- A. By radiation
 - B. By convection
 - C. By conduction
 - D. By hydrolysis
15. Digestion of proteins takes place in the _____.
- A. mouth
 - B. duodenum
 - C. stomach
 - D. colon

AGRICULTURE

16. Mwachangila noticed that seedlings on his nursery bed were congested. Which practice would you advise him to carry out?
- A. pruning
 - B. thinning
 - C. shading
 - D. weeding
17. When preparing a vegetable nursery bed, grade 5 learners placed some mulch after planting the seeds. Why do you think they did so?



- A. To reduce water loss from the soil, to keep the seeds and the soil from being eroded.
- B. To reduce water loss from the soil, to keep the seedlings from drying.
- C. To increase the fertility of the soil, to prevent soil erosion.
- D. To increase the rate of growth of the seeds, to keep the seedlings from drying.
18. Re-using plastic containers for innovative gardening helps in;
- A. conserving water.
- B. conserving the environment.
- C. increasing water sources.
- D. increasing crop yields.
19. Which of the following practices enables the seedling to grow straight in the nursery?
- A. Removing mulches.
- B. Reducing the number of watering times.
- C. Removing the shade.
- D. Uprooting unwanted plants.
20. The following are indigenous root crops **except**;
- A. Irish potatoes
- B. Cassava
- C. Arrowroots
- D. Yams
21. Grade 5 learners from Little Angels Academy made a sack garden during an Agriculture lesson. They were guided by their teacher to arrange some stones in the middle of the sack. Why were the stones put in the middle of the sack?
- A. To enable water to drain from the sack.
- B. To allow water to flow to the lower level of the sack.
- C. To make the sack to be very firm.
- D. For the sack not to grow old easily.
22. Which of the following statements is **not** true about innovative gardening?
- A. It can be practiced both horizontally and vertically.
- B. It requires large farms for it to be effective.
- C. It enables families to have food at all times.
- D. It can be done at home.
23. Which of the following domestic animals have the same use?
- A. donkey and cow
- B. sheep and cat
- C. dog and camel
- D. camel and horse
24. Fixing gutters on the roof of houses can help _____ in controlling erosion.
- A. sheet
- B. rill
- C. splash
- D. gully
25. Training climbing fruit plants involves;



- A. allowing them to grow in a particular direction.
 - B. allowing them to grow in a particular speed.
 - C. allowing them to grow at a specific time.
 - D. allowing them to grow on a selected garden.
26. Which of the following statements is **true** about the soil with particles of medium size?
- A. It retains the highest amount of water.
 - B. It retains the least amount of water.
 - C. Most crops can be grown on it.
 - D. It supports farming of rice.
27. The practice of planting crops to cover soil so that little water evaporates is called
- A. intercropping
 - B. covercropping
 - C. mulching
 - D. shading.
28. The following are ways of conserving water in farming. Which one is **not**?
- A. using sunken beds
 - B. mulching
 - C. shading
 - D. practicing irrigation
29. What is the meaning of organic gardening?
- A. growing crops without use of soil
 - B. growing crops without use agro-chemicals
 - C. growing crops using vertical or horizontal containers
 - D. growing crops that do not have strong stems
30. Amina has a bull that she bought after selling surplus maize from her farm. The bull **cannot** be used;
- A. as a pet.
 - B. to plough on the farm.
 - C. to provide meat.
 - D. as a source of income.

HOME SCIENCE

31. Grade 6 learners were asked to name a method that would be used to preserve meat only for a short period. Which of the following answers were they likely to mention?
- A. Sun drying
 - B. Smoking
 - C. Salting
 - D. Refrigeration
32. Which of the following houses is common in cities?
- A. Bungalows
 - B. Flats
 - C. Maisonette



- D. Storeyed house
33. Halima went to buy food from a general grocery. Which of the following should she consider first?
- A. The type of material the packaging is made of.
 - B. The weight of the item that has been packaged.
 - C. The price of the item that has been packaged.
 - D. The date of expiry written on the package.
34. Grade 4 learners were asked to name the fuels that can only be used to cook and provide light. It is likely that the fuels are:
- A. Charcoal and firewood
 - B. Electricity and firewood
 - C. Paraffin and gas
 - D. Gas and charcoal
35. At lunch time, Oxanna ate Ugali, sukumawiki and an orange. What else should she eat to make her diet balanced?
- A. An egg
 - B. A ripe banana
 - C. A cooked banana
 - D. Watermelon
36. Identify the type of house that is described below.
- A. It is oblong in shape.
 - B. It uses poles, sticks, grass leaves which are smeared with a plaster of cow dung and mud on both walls and roof.
 - C. It has small openings for ventilation.
 - A. Kikuyu hut
 - B. Manyatta hut
 - C. Borana hut
 - D. Luo hut
37. Which of the following is an advantage of charcoal jiko over a gas cooker?
- A. It can be used anywhere.
 - B. It is a bit cheap.
 - C. It can be used in doors and outdoors.
 - D. It cooks faster.
38. Awino was asked by her mother to prepare food for her sick father. Which of the following is the **main** factor to consider as she goes to buy the food?
- A. Fuel needed for cooking.
 - B. Dietary needs.
 - C. Availability of the food.
 - D. Time to be used to prepare the food.
39. Which of the following types of food **cannot** be stewed?



- A. Beans
 - B. Spinach
 - C. Green bananas
 - D. Poultry
40. When we eat foods rich in calcium like milk and yoghurt, we are not likely to suffer from;
- A. goiter
 - B. scurvy
 - C. anaemia
 - D. rickets

PHYSICAL AND HEALTH EDUCATION

41. A good pass in handball should be _____.
- A. slow
 - B. accurate
 - C. very low
 - D. very high
42. Which of the following is **not** a part of the javelin spear?
- A. Metal tip
 - B. Cord grip
 - C. Javelin rack
 - D. Shaft
43. The Warrior team have a match in the afternoon. They have to practice in the morning. Which one of the following is a cool down activity that they can perform?
- A. Slow dance
 - B. Rabbit jumps
 - C. Squat jumps
 - D. Frog jumps.
44. Which of the following is **not** part of the cardiorespiratory system?
- A. the lungs
 - B. the liver
 - C. the heart
 - D. blood vessels
45. Which of the following is a way of taking care of a public sports facility?
- A. Cutting trees around the facility to ensure that it is clear.
 - B. Drawing graffiti on the facility to make it beautiful.
 - C. Carrying out tree planting exercise regularly.
 - D. Only litter the place or use dust bins when necessary.
46. The following are defensive skills in Kabaddi. Which one is **not**?
- A. Ankle hold

- B. Block tackle
C. Wrist hold
D. Raiding
47. Which of the following techniques is also known as 'torso'?
- A. Drop finish
B. Shoulder shrug finish
C. Bunch start
D. Elongated start
48. Malkia performed a rope skipping skill where she would jump over the rope and land with toes and knees turned inward and heels apart; then she jumps over the rope again and lands with toes and knees turned outward and heels apart while staying on the balls of the feet. The skill she performed is known as;
- A. the wounded duck.
B. the swing kick.
C. double bounce.
D. one foot bounce.
49. The following are steps used in releasing a javelin.
- Throw in a straight line at the top.*
 - Withdraw the javelin.*
 - Release the javelin from the fingers.*
 - Stand facing forward with body turned*
- Which of the following is the **correct** order of performing the release?
- A. (iv), (i), (ii), (iii)
B. (ii), (i), (iv), (iii)
C. (iii), (iv), (i), (ii)
D. (iv), (ii), (iii), (i)

The state of the body having enough water is known as:-

- A. Watery
B. Clean
C. Dehydration
D. Hydration
50. In handball, the player who is the creative force in attack and disruption to opponent when defending is referred to as _____.
- A. right or left back
B. centre
C. circle runner
D. left or right winger





KENYA PRIMARY SCHOOL EDUCATION ASSESMENT
KPSEA 2023 EXAMINER FINAL PREDICTION

KISWAHILI

MUDA: Saa 1 dak 40

SOMA KWA MAKINI MAAGIZO YAFUATAYO.

1. Umepewa kijitabu hiki cha maswali na karatasi ya kujibia. Kijitabu hiki kina maswali 30.
2. Ikiwa utataka kuandika chochote si jibu andika katika kijitabu hiki.
3. Ukisha chaguajibu lako ionyeshe katika KARATASIYAMAJIBU na wala sio katika kijitabu hiki cha maswali.

JINSI YA KUTTIMIÁ KARATASI YA MAJIBU.

4. Tumia penseli ya kawaida. 5. Hakikisha ya kwamba yafuatayo yameandikwa katika karatsi ya majibu.

NAMBARIYAKO YA MTIHANI

JINA LAKO

JINA LA SHULE SHULE YAKO

6. Kwa kuchora kistari katika visanduku vyenye namba zinazokuhusu, onyesha namba ako kamili ya mtihani yaani namba ya shule, na zile namba tatu za mtahiniwa) katika sehemu iliyotengwamwanzo wa karatasi ya majibu.
7. Usitie alama zozote nje ya visanduku,,
8. Iweke safi karatasi yako ya maibu.
9. Kwakila swali 1-30 umepewamajibu manne. Majibu'ha o yameonyeshwakwä herufi A, B,D naD. Ni jibu **MOJA** tu kati ya hayo manne ambalo ni sahihi. Chagua jibu hilisi
10. Kwenye karatasi ya majibu,jibu sahihi lionyeshwe kwakuchora kistari katika kisanduku chenye herufi uliyochagua kuwa ndilojibu.
11. Chora kistari chako vizuri. Kistari chako kiwe cheusi na kisijitokeze nje ya kisanduku.
12. Kwakila swali, chora kistari katika kisanduku kimoja tu kati ya visanduku ulivyopewa.



Soma kifungu kifuatacho kisha ujibu maswali yanayofuata.

Hapo zamani za kale, katika ulimwengu wa wanyama, paliishi Swara na **Mbweha Swara na Mbweha walipendana kama chanda na pete**. Wawili hao walikuwa na familia zao. Kila mmoja alikuwa na nyumba yake, mke pamoja na watoto. Mbweha alikuwa na watoto sita naye Swara alikuwa na watoto watano. Marafiki hao **walifanya mambo yao kwa ushirikiano mkubwa**. Walifuga wanyama kama vile mbuzi, ng'ombe, kondoo na ngamia. Wanyama hao waliwapa faida ya maziwa na wakati fulani kuwafanyia kazi.

Tofauti kubwa iliyokuwapo ni kuwa Swara alipenda shughuli za kilimo naye Mbweha alipenda sana ufugaji. Swara alipouza maziwa yake, alipanda miche kisha akaamua kuwekeza katika kilimobiashara. Alipanda mimea kama vile michungwa, mihindi, mitufaha na mingine. Alipovuna mazao ya mimea hiyo, alitoa gharama ya ukulima huo kisha akabaki na faida kubwa mno. Kwa kuwa kazi ilikuwa nyingi shambani, aliamua kuwapa wanyama wengine ajira. Kila alipovuna mazao yake, aliyauza na kuweka pesa alizozipata katika benki. Hiyo ilikuwa njia ya kuhakikisha kuwa pesa zake zisingebwa na wahalifu. Uzalendo wa Swara ulijulikana sana alipolipa ushuru kutokana na mapato.

Kwa sasa, marafiki hao wawili ni matajiri wakubwa. Wakazi katika eneo hilo wanapenda sana kilimo, ufugaji na biashara. Vilevile, wao hulipa ushuru wa mapato mara kwa mara. Wamejifunza kwa Swara na Mbweha kuwa kulipa ushuru kuna manufaa makubwa katika nchi.

1. Ukirejelea maisha ya Swara, ni jambo gani lililokuwa la mwisho kati ya mambo haya?
 - A. kulipa ushuru
 - B. kuuza mazao ya shambani
 - C. kufuga wanyama
 - D. kuanzisha kilimo
2. Maneno '**walifanya mambo yao kwa ushirikiano mkubwa**' yanaonyesha kuwa Swara na rafiki yake walizingatia methali gani?
 - A. Achanikaye kwenye mpini hafi njaa.
 - B. Majuto ni mjukuu huja baadaye.
 - C. Mkono mmoja hauchinji ng'ombe.
 - D. Panya wengi hawachimbi shimo.
3. Ni kweli kuwa kama Swara asingekuwa na mifugo;



- A. angekosa wanyama wa kumfanyia kazi shambani.
B. angekosa pesa za kuweka katika benki.
C. angeshindwa kabisa kulipa ushuru.
D. angeshindwa kuanzisha kilimo chake.
4. Benki ilimpa Swara manufaa gani?
A. Ilimpa mkopo alipokosa pesa.
B. Ilimtunzia pesa zake.
C. Ilimpa ushahuri kuhusu kilimo.
D. Ilimsaidia kuuza mazao yake.
5. Marafiki wanaozungumziwa katika ufahamu huu walikuwa na jumla ya watoto wangapi?
A. 6
B. 11
C. 5
D. 4
6. Swara alikuwa mzalendo kwa kuwa;
A. aliipenda sana nchi yake.
B. aliwapa wenzake ajira.
C. alilipa ushuru kutokana na mapato.
D. alikuwa rafiki wa Mbweha.
7. Kifungu hiki kinaeleza umuhimu wa mambo yafuatayo **isipokuwa**;
A. kilimo
B. biashara
C. ufugaji
D. elimu
8. Maneno '**Swara na Mbweha walipendana kama chanda na pete**' ni mfano wa;
A. tashbihi ya umbo
B. tashbihi ya tabia
C. istiara ya umbo
D. nahau ya upendo

Soma makala yafuatayo kisha ujibu maswali yanayofuata.

Kijiji cha Ingusi kinapatikana kati ya masoko manne. Soko la Butere hujulikana sana kwa ununuzi wa mifugo kama vile mbuzi, nguruwe, kondoo na mbuzi. Katika



soko lilo hilo, kunapatikana nguo za watu wa kike na kiume, watoto kwa watu wazima. Wanaotaka kununua viungo vya upishi kama vile mafuta, vitunguu, nyanya na chumvi nao wanaweza kununua katika soko hilo. Upande mwingine, utapata soko la Mumias. Kwenye soko hilo, unaweza ukanunua mifugo mbalimbali. Aidha, unaweza ukununua jezi za timu mbalimbali kama vile Gor Mahia, AFC Leopards, Manchester United, PSG na kadhalika. Vifaa mbalimbali vinavyotumika nyumbani kama vile sufuria, vikombe, mabeseni, vijiko na visu viliuzwa sokoni hapo. Nyanya, mafuta ya kupikia, vitunguu, mdalasini na bizari pia huweza kupatikana katika soko hilo.

Soko la Imanga nalo linapatikana karibu na kijiji cha Ingusi. Kwenye soko hilo la Imanga, wanunuzi hupata bidhaa nyingi zisizopatikana katika masoko hayo mengine. Kile kinachopatikana kwenye soko hilo na lile la Butere ni viungo vya kupikia. Soko la Ugunja linafahamika kwa bidhaa moja muhimu sana. Wakazi wa Ingusi huenda kwenye soko la Ugunja kwa sababu ya kununua samaki mbalimbali kama vile mkunga, kipepeo, pweza na kambare.

9. Ni nini kinachopatikana katika masoko matatu?
- A. vifaa vya kupikia
 - B. viungo vya kupikia
 - C. jezi za kuchezea
 - D. mavazi mbalimbali
10. Waliotaka kununua mifugo wangetembelea masoko gani?
- A. Butere na Imanga
 - B. Butere na Mumias
 - C. Mumias na Imanga
 - D. Ugunja na Butere
11. Soko lipi linalojulikana kwa bidhaa za aina moja pekee?
- A. Mumias
 - B. Butere
 - C. Imanga
 - D. Ugunja
12. Kifungu kimetaja samaki wa aina ngapi?
- A. 4
 - B. 3
 - C. 5
 - D. 6



Soma mazungumzo yafuatayo kisha ujibu maswali yanayofuata.
(Kando ya barabara, Farida anakutana na Juma akiwa amebeba jembe.)

Farida: Hujambo Juma?

Juma : Sijambo Farida. Umeadimika sana. (***Wanashikana mikono wakitabasamu.***)

Farida: Si sana. Je, unatoka wapi na jembe?

Juma : Mimi pamoja na vijana wenzangu tumekuwa **tukichanga bia** shambani. Farida

Farida: Hewaa! Jambo zuri sana. Nami ninatoka katika shughuli za kufanya mazoezi. Tangu nilipokuwa na umri mdogo, nimekuwa nikifanya mazoezi mara kwa mara. Kesho nitahamia kule Marekani, nimechaguliwa kuwa mchezaji katika timu moja ya kandanda.

Juma : Hongera. Uamuzi huo ni wa busara mwenzangu. Ningependa nifike nyumbani ili nipumzike kiasi.

Farida: Buriani Juma.

Juma : Buriani dawa. (***Wanapigana pambaja kisha kila mmoja anaondoka.***)

13. Ni kweli kuwa Farida;

- A. anapenda masomo.
- B. anapenda kilimo.
- C. anapenda afya yake.
- D. anapenda nchi yake.



14. Nahau 'tukichanga bia' ina maana gani jinsi ilivyotumika katika mazungumzo?

- A. tukilima
- B. tukifanya bidii
- C. tukishirikiana
- D. tukizungumza

15. Ni kweli kuwa Farida na Juma;

- A. wangeonana tena shule zikifungwa.
- B. hawakutarajia kuonana hivi karibuni.
- C. walisomea katika shule moja.
- D. walikuwa marafiki kwa muda mrefu.

Chagua jibu lifaalo ili kujazia nafasi zilizoachwa.



Kenya ni nchi __16__ makabila mengi. Makabila haya yanapatikana nchini __17__. __18__ tuishi vizuri, tunafaa kuwa na amani na umoja kati __19__. Umoja huo utatuwezesha kupiga hatua za kimandeleo na __20__ uchumi wetu.

| | A | B | C | D |
|-----|----------|----------|-----------|----------|
| 16. | yenyewe | lenye | yenye | lenyewe |
| 17. | mote | pote | yote | kote |
| 18. | Ikiwa | Ila | Ili | Lakini |
| 19. | yetu | yenu | yao | yangu |
| 20. | kuijenga | kuujenga | kuyajenga | kumjenga |

21. Chagua sentensi iliyo sahihi.

- A. Mgeni mwenye amewasili ni huyu.
- B. Hii kalamu ilinunuliwa jana.
- C. Mtoto mgani mwenye mikono safi?
- D. Walitupa kalamu nzuri tukafurahi.

22. Ishara gani kwenye tarakilishi ambayo huonyesha **chapa koza**?

- A. I
- B. B
- C. X
- D. U

23. Tambua aina za maneno yaliyopigiwa mistari.

Wewe una kalamu ambayo ni nzuri.

- A. kivumishi, kivumishi, kiwakilishi
- B. kiwakilishi, kivumishi, kivumishi
- C. kiwakilishi, kiwakilishi, kivumishi
- D. kivumishi, kielezi, kivumishi

24. Kipande cha kwanza cha mshororo wa shairi huitwaje?

- A. ukwapi
- B. utao
- C. vina
- D. mizani

25. Tambua umoja wa;

Makazi yao yamezungushiwa nyua nzuri.

- A. Makazi yao yamezungushiwa ua mzuri.
- B. Makazi yake yamezungushiwa ua mzuri.



- C. Kazi yake imezungushiwa ua mzuri.
D. Makazi yake yamezungushiwa ua zuri.
26. Kiungo cha mwili ambacho huhifadhi mkojo tumboni huitwa _____.
- A. figo
B. pafu
C. kibofu
D. moyo
27. Chagua ukubwa wa;
Mzee huyo amebeba ndoo iliyokuwa chini ya mti.
- A. Jizee hilo limebeba jidoo lililokuwa chini ya jiti.
B. Kizee hicho kimebeba kidoo lilichokuwa chini ya kijiti.
C. Zee huyo limebeba doo lililokuwa chini ya jiti.
D. Zee hilo limebeba doo lililokuwa chini ya jiti.
28. Soma ni kwa 'somewa' kama vile nyoa ni kwa _____.
- A. nyoewa
B. nyoana
C. nyolewa
D. nyoleka
29. Nomino gani inayopatikana katika ngeli ya U-U kati ya nomino zifuatazo?
- A. ubua
B. ukuta
C. unga
D. mkono
30. Alama gani ya kuakifisha ambayo hutumika kuanzishia orodha?
- A. koloni
B. ritifaa
C. hisi
D. koma



KENYA PRIMARY SCHOOL EDUCATION ASSESMENT
KPSEA 2023 EXAMINER FINAL PREDICTION

MATHEMATICS

Time: 2 hours

READ THESE INSTRUCTIONS CAREFULLY.

1. You have been given this question booklet and a separate answer sheet. The question bookier contains 30 questions.
2. Do any necessary rough work in this booklet.
3. When you have chosen your answer, mark it on the **ANSWER SHET**, not in the question paper.

HOW TO USE THE ANSWER SHEET.

4. Use an ordinary pencil only.
5. Make sure that you have written on the answer sheet.

YOUR INDEX NUMBER

YOUR NAME

NAME OF YOUR SCHOOL

6. By drawing a **dark line** inside the correct numbered boxes mark your full index number (i.e. school code Number and the three -figure candidate's Number) in the grid near the top of the answer sheet.
7. Do not make any marks outside the boxes.
8. Keep your answer sheet as clean as possible and Do not fold it."
9. For each question 1-30 four answers are given. The answers are lettered A, B, C, D. In each case Only One of the four answers is correct. Chose the correct answer.
10. On the answer sheet show the correct answer by drawing a dark line inside the box in which the letter you have chosen is written.
11. Your dark line Must be within the box. Make your line as dark as possible.
12. For each question **Only One box** is to be marked in each set of four boxes.

Candidates should check the question papers to ensure that all questions are printed.



1. What is the place value of digit 8 in 815276
 - A. Thousands
 - B. Hundred thousands
 - C. Tens
 - D. Ten thousands
2. Charles sold 476391 bags of maize to a miler. Write the number of bags sold in words.
 - A. Four hundred and seventy six thousand three hundred and ninety one
 - B. Forty seven thousand three hundred and ninety one
 - C. Four hundred and seventy six thousand and three ninety one.
 - D. Four thousand seven hundred and ninety one
3. Subtract 67231 from 800284 by rounding off each to the nearest thousand.
 - A. 73.053
 - B. 733053
 - C. 867053
 - D. 733000
4. Work out the quotient of 7658 and 784 by rounding off each to the nearest thousand.
 - A. 7
 - B. 8
 - C. 8,000
 - D. 1,000
5. Work out
 $9768 \div 20$
 - A. 48 rem 4
 - B. 588 rem 16
 - C. 488 rem 8
 - D. 58
6. Work out the reciprocal of $7\frac{1}{5}$
 - A. $\frac{36}{5}$
 - B. $\frac{5}{36}$
 - C. $\frac{7}{5}$
 - D. $\frac{5}{71}$
7. Work out 46^2
 - A. 2116
 - B. 92
 - C. 416
 - D. 822
8. A fruit vendor bought ten apples at sh 25 each. If he sold each at shs 30, what profit did he make?
 - A. sh 50
 - B. sh 55
 - C. sh 300
 - D. sh 150

9. The cost of a jacket is sh 5600. What is the cost of 27 such jackets?
- A. sh 117600
 - B. sh 267
 - C. sh 151200
 - D. sh 83
10. Work out $\frac{3}{4} - \frac{2}{7}$
- A. $\frac{1}{3}$
 - B. $\frac{13}{28}$
 - C. $\frac{6}{28}$
 - D. $\frac{7}{12}$
11. Fill in the missing factor
- 276 x = 14904
- A. 413504
 - B. 826
 - C. 504
 - D. 54
12. What is the greatest common divisor of 72 and 56?
- A. 16
 - B. 36
 - C. 8
 - D. 42
13. Multiply 40cm 9mm by 7
- A. 20cm 19mm
 - B. 280cm 63mm
 - C. 80cm 9mm
 - D. 286cm 3mm
14. Convert 265mm to centimetres and millimetres.
- A. 26cm 5mm
 - B. 2cm 65mm
 - C. 265cm
 - D. 2650cm
15. One hundred and eight seedlings were to be shared equally among twelve farmers. How many seedlings would each farmer get?
- A. 19
 - B. 1 111
 - C. 1 296
 - D. 9.
16. A carpenter made **32** cupboards, **18** tables and **y** stools. If the total number of furniture was **63**, how many stools were made?
- A. 23
 - B. 13



- C. 50
D. 53
17. Write 19 in roman numerals
A. XVIII
B. IXX
C. XIX
D. XX
18. Convert $\frac{1}{8}$ into a decimal.
A. 0.625
B. 0.5
C. 0.125
D. 0.8
19. Work out $243.76 + 7.009 + 3.5$
A. 250.769
B. 254.269
C. 2549
D. 31.420
20. A trader brought 3 tonnes of sugar from the factory. How many kilograms did the trader buy?
A. 30kg
B. 30000kg
C. 300kg
D. 3000kg
21. Rotich bought a pineapple for sh 180 and later sold it for sh 150. What loss did he make?
A. sh 100
B. sh 230
C. sh 30
D. sh 130
22. Divide 26cm 4mm by 6
A. 4cm 4mm
B. 6cm 6mm
C. 8cm 6mm
D. 10cm 8mm
23. Convert 2247hrs into 12 hours clock system.
A. 12:47pm
B. 10:47p.m
C. 4.47pm
D. 14:47am
24. What is the place value of digit 7 in 12.2173?
A. Tens
B. Thousandths
C. Thousands

- D. Hundreds
25. Convert 3700 millilitres to litres
- A. 3.7 litres
 - B. 37 litres
 - C. 370 litres
 - D. 37000 litres
26. Mariarosa received x beads after their teacher divided **125** beads equally among **5** of them. How many beads did Mariarose get?
- A. 25
 - B. 35
 - C. 15
 - D. 45

27. Work out:

| | |
|------------|-------------|
| hrs | mins |
| 5 | 16 |
| x _____ | 7 |
| | |

- A. 35hrs 52mins
 - B. 36hrs 112mins
 - C. 35hrs 112mins
 - D. 36hrs 52mins
28. Mwende has a square piece of cloth whose side is **18cm**. What is the area of the piece of cloth?
- A. 36cm^2
 - B. 360cm^2
 - C. 324cm^2
 - D. 334cm^2
29. Work out:
- A. 7 tonnes 900 kg
 - B. 9 tonnes 700 kg
 - C. 8 tonnes 800 kg
 - D. 7 tonnes 700 kg
30. How many faces does a cuboid have?
- A. 9
 - B. 8
 - C. 5
 - D. 6





KENYA PRIMARY SCHOOL EDUCATION ASSESMENT

KPSEA 2023 EXAMINER FINAL PREDICTION

CREATIVE ARTS, SOCIAL STUDIES & RELIGIOUS EDUCATION

Time: 2 hours

READ THESE INSTRUCTIONS CAREFULLY.

1. You have been given this question booklet and a separate answer sheet. The question bookier contains 50 questions.
2. Do any necessary rough work in this booklet.
3. When you have chosen your answer, mark it on the **ANSWER SHET**, not in the question paper.

HOW TO USE THE ANSWER SHEET.

4. Use an ordinary pencil only.
5. Make sure that you have written on the answer sheet.

YOUR INDEX NUMBER

YOUR NAME

NAME OF YOUR SCHOOL

6. By drawing a **dark line** inside the correct numbered boxes mark your full index number (i.e. school code Number and the three -figure candidate's Number) in the grid near the top of the answer sheet.

7. Do not make any marks outside the boxes.

8. Keep your answer sheet as

clean as possible and Do not fold it."

9. For each question 1-30 four answers are given. The answers are lettered A, B, C, D. In each case Only One of the four answers is correct. Chose the correct answer.

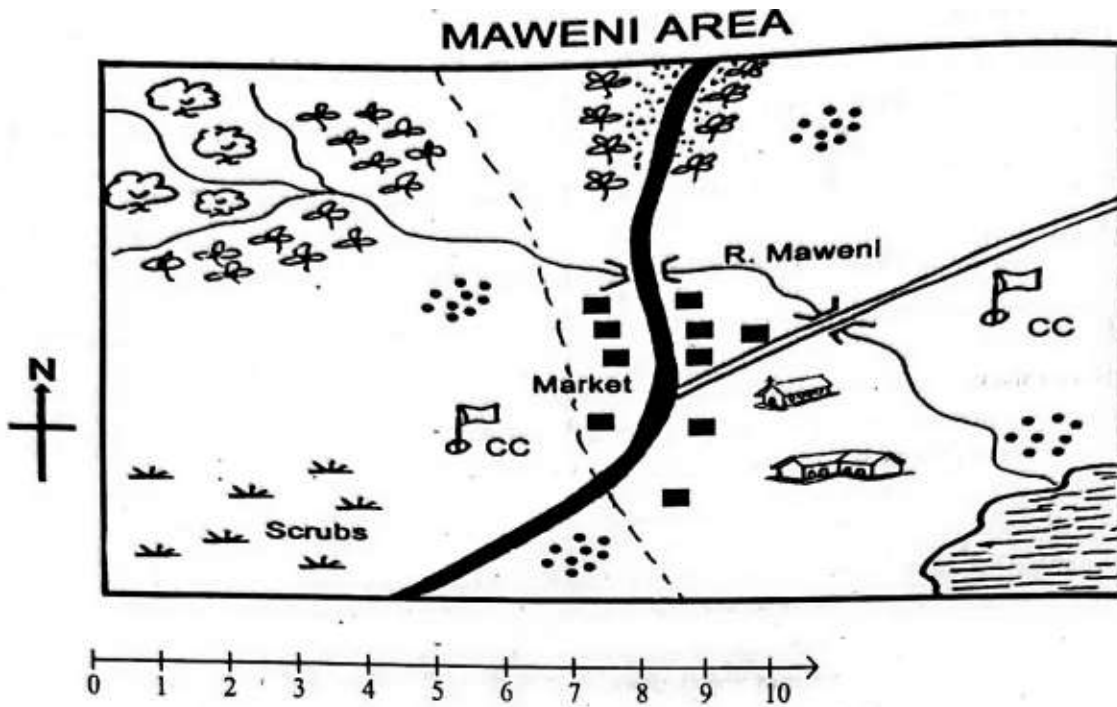
10. On the answer sheet show the correct answer by drawing a dark line inside the box in which the letter you have chosen is written.

11. Your dark line Must be within the box. Make your line as dark as possible.

12. For each question **Only One box** is to be marked in each set of four boxes.

Candidates should check the question papers to ensure that all questions are printed.





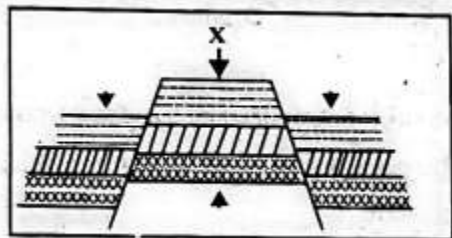
KEY

| | | | |
|-----|---------------------|--|---------------------|
| | Tarmac road | | Church |
| C.C | Chief's Camp | | Locational boundary |
| | Tea | | Forest |
| | Murrum road | | Settlement |
| | Coffee | | River and Bidge |
| | Permanent buildings | | Lake |
| | School | | |

- The land in Maweni area slopes from
 - North to West
 - West to South
 - North West to South East

- D. South East to North.
2. Which type of climate is experienced in the Northern part of Maweni area?
 - A. Hot and dry.
 - B. Wet and cool.
 - C. Cool and wet.
 - D. Hot and wet.
 3. The **main** means of transport in Maweni area is
 - A. road
 - B. air
 - C. water
 - D. pack animals.
 4. The following shows that Maweni area is developed except the presence of
 - A. farms
 - B. factories
 - C. roads!
 - D. markets
 5. Maweni area is **likely** to be headed by a
 - A. Chief
 - B. Governor
 - C. County commissioner
 - D. Member of County Assembly.
 6. Which of the following is an indigenous beef cattle?
 - A. Zebu
 - B. Fresian
 - C. Jersey
 - D. Ayrshire.
 7. Which of the following is a characteristic of large-scale farming?
 - A. Use of simple tools.
 - B. Crops are grown for home use.
 - C. Large tracks of land are cultivated.
 - D. Use of family labour.
 8. Grade 6 learners wanted to practice fishing. Which main inland fishing ground in Kenya can they visit?
 - A. Lake Turkana
 - B. Lake Victoria
 - C. River Tana
 9. Which language group in Eastern Africa has the least number of people?
 - A. Bantu
 - B. Cushites
 - C. Semites
 - D. Nilotes
 10. A tourist visited our country and saw writings on a banner at the airport about a citizen. Who is a citizen? A
 - A. family member

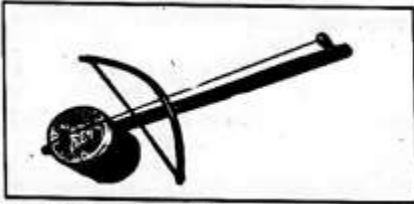
- B. person who owns property
C. person who runs from his/her country
D. person who belongs to a particular country.
11. During a group discussion, Grade 6 pupils listed the following examples of plains. Which answer did they give wrong?
A. Lotikipi
B. Nyambene
C. Bilesha
D. Kano.
12. Which of the following is **not** an element of weather?
A. Temperature
B. Sunshine
C. Cloud cover
D. Rain
13. Kibwana school has different leaders. Grade 6 learners asked their teacher to help them identify sections of leadership in the school. Which section of leadership is top in the structure in a school?
A. Head teacher
B. Deputy head teacher
C. Board of management
D. Parents.
14. The figure below shows a land forming process.



- The force marked X is
A. compression force
B. upthrust force
C. tension force
D. inertia.
15. Which one of the following is not a block mountain?
A. Aberdares Mountain
B. Mt. Pare
C. Mt. Ruwenzori
D. Mt. Kenya

PART B: MUSIC

16. Which of the following songs is wrongly matched with the purpose it serves?
A. Patriotic - Praise leaders of a country.

- B. Popular - Pass a certain message.
C. Lullaby - Comfort babies.
D. D. Sacred - Please God.
17. Which of the following values **cannot** be learnt from the East African Community Anthem?
- A. Selflessness
B. Patriotism
C. Tribalism
D. Peace.
18. Grade six learners sang the song 'Tushangilie Kenya' during a National day celebration. The boys sang in bass and tenor while the girls sang in soprano and alto. We can say that this song was sung in
- A. unison
B. harmony
C. voice parts
D. genders.
19. Anita came across the wind instrument below. Identify its name and the community where it is used in folk song performance.
- 
- A. Obokano-Kisii
B. Adeudeu-Teso
C. Orutu - Luo
D. Sukuti-Luhya.
20. When playing a chivoti, we can change the pitch of the tune by
- A. covering and uncovering the holes.
B. pressing softly all the holes.
C. pressing hard all the holes.
D. only covering the holes.
21. Kilumi dancers carried drums to perform in Music Festivals. The performers wore sisal skirts and decorated themselves with necklaces. The presentation was good but its ending did not please the judges. Which feature of a folk song did they fail to apply at the end?
- A. Instrumentation
B. Costumes
C. Climax
D. Participants.

22. Which solfa syllable is shown below?



- A. do
 - B. mi
 - C. re
 - D. ti
23. Sofi wanted to make a drum. Which of the following materials was she likely to use?
- A. Hollow wood, animal skin, string.
 - B. Hollow wood, piece of cloth, strings.
 - C. Hollow wood, animal skin, metal rod.
 - D. Hollow wood, piece of cloth, animal skin.
24. Grade 6 pupils were asked to identify the French rhythm name given to a semibreve. What was their correct response?
- A. Ta-te
 - B. Taa-aa
 - C. Taa-aa-aa-aa
 - D. ta-te-taa
25. During Music Festivals, a certain group of performers presented a folk song and the audience understood its message clearly. This was probably due to
- A. many facial expressions
 - B. correct diction
 - C. varied gestures
 - D. high tempo.

PART C: ART AND CRAFT

26. Which factor is NOT considered when drawing two overlapping cylindrical forms?
- A. Proportion of forms
 - B. Balance of forms
 - C. Variation of lines
 - D. Inadequate space
27. Which one is NOT a 3-D artwork?
- A. sculpture
 - B. pottery
 - C. drawing
 - D. marionette
26. Shakilla wanted to draw a still life drawing. Which one of the following **cannot** be used to draw a still life?
- A. Imagination



- B. Tracing
C. Observation
D. Memory.
27. Linet was preparing to mount her artwork for an exhibition. Which of the following factors was she **not** likely to consider?
A. Proper labelling of the artwork.
B. Adequate lighting of the exhibition room.
C. Good arrangement of the artwork.
D. Suitable background music
28. Grade 6 pupils collected the following materials for making a door mat. Which of the following is an artificial material?
A. Raffia
B. Acrylic yam.
C. Reed
D. Sisal fibre.
29. John was making improvised crayons using bee wax. Which of the following explains why he used two containers when melting the wax?
A. To prevent fire accidents since wax is flammable.
B. To enable the colour to mix well with the wax.
C. To melt slowly.
D. To ensure consistency in melting.
30. Grade 4 pupils were provided with dye, strings, small stones and a white fabric for a dye and tie lesson. Which of the following techniques of tie and dye were they performing?
A. Knotting
B. Pleating
C. Folding
D. Stamping
31. A grade 4 pupil was preparing to paint an imaginative composition. However, he noticed that his brush was missing. Which of the following materials would he not use to improvise a paint brush?
A. Sisal fibre
B. Feathers
C. A sponge
D. Grass.
32. Celestine, a photographer was hired to take photos during a wedding ceremony. Which of the following aspects of photography was she not likely to observe
A. Centering of the subject
B. Proportionality
C. Background
D. ighting.
33. The following are conventional mounting materials except:-
A. Banana fibres
B. Manilla paper
C. Mounting board

D. Catridge paper

PART C: RELIGIOUS EDUCATION PART 1: Choose a section you have prepared for. Each section has 15 marks

CHRISTIAN RELIGIOUS EDUCATION

36. Who among the following people worked for 14 years in order to get the girl he loved?
- A. John
 - B. Job
 - C. David
 - D. Jacob.
37. Jesus promised to send His disciples a helper whom he sent on the day of Pentecost. On that day, many people were filled with
- A. tongues
 - B. fire
 - C. holy spirit
 - D. life.
38. In the parable of the good Samaritan, the man who fell into the hands of robbers was going to
- A. Jericho
 - B. Bethany
 - C. Jerusalem
 - D. Samaria.
39. Which one of the following is not part of God's creation?
- A. Water
 - B. Soil
 - C. Car
 - D. Man
40. During the baptism of Jesus, the Holy Spirit came down in form of a
- A. pigeon
 - B. dove
 - C. duck
 - D. raven.
41. During break time, you find your best friend opening your bag without your permission. What is the best action to take?
- A. Report to the teacher.
 - B. Forgive him and tell him to ask for anything he wants.
 - C. Discuss the act with your friends.
 - D. Stop your friendship.
42. The following are reasons why Christians read the Bible. Which one is not? To
- A. strengthen relation hip with God
 - B. get guidance on various issues



- C. strengthen faith in God
D. pass exams.
43. Sharing work and resources promotes all the following **except**
- A. love
 - B. unity
 - C. peace
 - D. hatred.
44. Which of the following parables reminds christians never to give up in life? The parable of
- A. the friend at midnight
 - B. Pharisee and the tax collector
 - C. the three servants
 - D. the lost coin.
45. On the way from School, Ali saw two boys fighting. What should he do?
- A. Stop them.
 - B. Report them
 - C. Reconcile them
 - D. Run away.
46. When the first humans disobeyed God, they
- A. were rewarded
 - B. were chased from the Garden of Eden
 - C. reconciled with God
 - D. died.
47. When Moses was taking care of the flock, he saw a burning bush. When he went near it,
- A. he was burned
 - B. a voice told him to take off his shoes
 - C. his stick changed to a snake
 - D. one of the sheep disappeared.
48. The Bible is divided into the Old and the New Testament. How many books does the Old Testament have?
- A. 66
 - B. 27
 - C. 39
 - D. 47
49. When Jonah was sent to Nineveh by God, he disobeyed. What did he do?
- A. He was swallowed by a big fish.
 - B. He escaped to another place.
 - C. God left him alone.
 - D. He stayed at home and did nothing.
50. Which of the following books of the Bible is a prophetic book?
- A. Isaiah
 - B. Mathew
 - C. Genesis
 - D. 1st kings.



PART 2: ISLAMIC RELIGIOUS EDUCATION 3

36. Which one of the following surahs of the holy Qur'an clearly explains the events of the day of judgement?
- A. Maun
 - B. Nasr
 - C. Zilzala
 - D. Dhuha
37. Grade 5 learners were discussing about the first revelation. Which one of the following surahs did they identify as the first to be revealed?
- A. Fatiha
 - B. Nas
 - C. Falaq
 - D. Alaq
38. When the prophet lost one of his sons, the Quraish mocked him saying that he had been cut off. Which surah did Allah reveal to console him?
- A. Asr
 - B. Kawthar
 - C. Nasr
 - D. Tiyn.
39. How old was the prophet when he lost his mother?
- A. 6 years
 - B. 8 years
 - C. 10 years
 - D. 40 years
40. Which one of the following brings love among the Muslims according to the hadith of the prophet (S.A. W)?
- A. Fasting
 - B. Swalah
 - C. Hajj.
 - D. Greetings
41. Muslims are allowed to take Tayammam when
- A. water is not available
 - B. water is very cold
 - C. one has to buy water
 - D. there is a lot of sand and dust around.
42. Which one of the following statements is **true** about the angels of Allah? They
- A. received books
 - B. preached Islam
 - C. advice Allah
 - D. obeyed the command of Allah,
43. Angels are created from
- A. nar
 - B. clay



- C. nur
D. water...
44. When Hussein was on his way back home, he saw some Muslims who were standing throughout their prayer. Which prayer were they performing?
A. Eid
B. Jum'aa
C. Janaza
D. Dhuhr.
45. The first muadhin was called by
A. Umar
B. Bilal
C. Abubakar
D. Ali.
46. A prophet of Allah was thrown in fire to burn off but Allah (S.W) ordered fire, "***Be cool and safe on my servant'***". This was Prophet
A. Nuh (A.S)
B. Yusuf (A.S)
C. Musa (A.S)
D. Ibrahim (A.S).
47. How many brothers did Prophet Yusuf (A.S) have?
A. 11
B. 10
C. 12
D. 13
48. What are Hadith?
A. Stories of Prophets.
B. Sayings of Swahabas.
C. The history of Islam.
D. Sayings of the Prophet.
49. In the hadith of the prophet, we learn that Allah (S.W) judges people basing on their
A. actions
B. appearance
C. wealth
D. race.
50. What did Allah promise those men who wear women clothes and women who wear the male clothing according to Hadith?
A. Reward
B. Punishment
C. Curse
D. Confusion.

