

ALL SUBJECTS



THE KENYA PRIMARY SCHOOL EDUCATION ASSESMENT

KPSEA 2023 BLUE PRINT PREDICTION

A KPSEA 2023 PREDICTION WITH PRECISION

This PDF Comprises of Expected KPSEA 2023 Questions prepared by a panel of top KNEC writers. All the KPSEA 2023 Candidates are advised to take the prediction questions therein seriously!

For Complete Blue print analysis & Marking Schemes Contact

0724333200/ 0795491185

Mr Machuki

Confidential!!!

Kenya Educators Consultancy Wishes all the KPSEA 2023 Candidates the best of Luck ahead of the KPSEA National Exams.



317083

©2023 The Kenya National Examinations Council



Turn over



KENYA PRIMARY SCHOOL EDUCATION ASSESMENT

KPSEA 2023 BLUE PRINT PREDICTION**ENGLISH****Time: 1 hour 40 minutes****READ THESE INSTRUCTIONS CAREFULLY.**

1. You have been given this question booklet and a separate answer sheet. The question bookier contains 30 questions.
2. Do any necessary rough work in this booklet.
3. When you have chosen your answer, mark it on the **ANSWER SHET**, not in the question paper.

HOW TO USE THE ANSWER SHEET.

4. Use an ordinary pencil only.
5. Make sure that you have written on the answer sheet.

YOUR INDEX NUMBER**YOUR NAME****NAME OF YOUR SCHOOL**

6. By drawing a **dark line** inside the correct numbered boxes mark your full index number (i.e. school code Number and the three -figure candidate's Number) in the grid near the top of the answer sheet.
7. Do not make any marks outside the boxes.
8. Keep your answer sheet as clean as possible and Do not fold it."
9. For each question 1-30 four answers are given. The answers are lettered A, B, C, D. In each case Only One of the four answers is correct. Chose the correct answer.
10. On the answer sheet show the correct answer by drawing a dark line inside the box in which the letter you have chosen is written.
11. Your dark line Must be within the box. Make your line as dark as possible.
12. For each question **Only One box** is to be marked in each set of four boxes.

Candidates should check the question papers to ensure that all questions are printed.



Read the conversation below and then answer questions 1-5.



Mother : Good evening, son?

Fletcher : 1. Our teacher told us in order to be a good salesperson you need to have good communication skills. You're a _____ saleswoman, 2?

Mother : Yes, I am. Mostly you have to be a good communicator in order to succeed.

Fletcher: What does it take to have good conversational skills?

Mother : To have good conversational skills, you need to deliver information in a way that is easy for your target customer to be able to _____ understand easily.

Fletcher: What else can I do?

Mother : For now, focus on improving your English Language by reading more storybooks, watch English movies and note down every new word you learn in a diary.

1. What polite response should Fletcher give his mother?
 - A. Good evening.
 - B. Good afternoon.
 - C. Good evening, mother.
 - D. Yes, mother.
2. What question tag fits the blank space numbered 2?
 - A. are you
 - B. aren't you
 - C. can you
 - D. didn't you.
3. What other name can be used instead of the underlined word customer?
 - A. Client
 - B. Seller
 - C. Victim
 - D. Producer
4. According to the dialogue, the following are ways Fletcher can use to improve his English **except**?



- A. Reading more storybooks.
 - B. Noting down new words.
 - C. Have poor conversational skills.
 - D. Watching English movies.
5. What do you think should Fletcher say at the end of the dialogue?
- A. Good evening mother.
 - B. Thank you for the advice, mother.
 - C. What's for dinner mother?
 - D. Good talk.

Read the following passage and then questions 6 – 9.



Drug use is on the rise among the youth today. Young people experiment with both hard drugs and alcohol. Some claim it gives them a shared experience. Others say drugs help them to calm down. There are those who are tricked into believing that drugs would help them solve whatever problems they have. The end result is getting addicted.

Alcoholism for instance, is a chronic disorder in which a person is unable to refrain from frequent and excessive consumption of alcohol. Excessive drinking damages the liver and leads to liver cirrhosis. The alcoholic has impaired judgement and disturbed sleep.

The government of Kenya has ensured that there is no sale of alcohol for children under the age of 18. In Kenya, it is illegal for minors to consume alcohol. According to the Alcoholic Drinks Control Act 2010, it is an offense for a person to sell, give, or supply alcoholic drinks to a person under the age of 18. It is also an offense for a person under the age of 18 to purchase, attempt to purchase, or consume alcoholic drinks.

Surprisingly we still find some rogue businessmen doing the contrary. This menace of drug and substance use should be fought by everyone. It should not be left to the government alone. We all need a society that will develop tomorrow. We all need leaders tomorrow. We all need a generation after us. For us to achieve all that, we must bring up our children in the right way. They should know that drug and substance use is something to be avoided like the plague.

6. Majority of the youth get into using drugs
- A. knowingly by following in the footsteps of their siblings.
 - B. unconsciously by believing that they have a solution to all their troubles.



- C. experimenting with everything they come across.
D. by watching the celebrities on television.
7. According to the passage, alcoholism is _____
A. a chronic disorder where one is unable to refrain from consuming alcohol in large amounts.
B. a person who drinks an excessive amount of alcohol.
C. consumption of drugs and alcohol.
D. refraining from taking alcohol.
8. Which one among the following is **not** an effect of alcohol?
A. Impaired judgement
B. Damages the liver.
C. Relieving stress.
D. Disturbed sleep.
9. It is an offence for a person under the age of 18 to do all the following **except**?
A. Purchase alcohol.
B. Attempt to purchase alcoholic drinks.
C. Consume alcoholic drinks.
D. Not to purchase alcohol.

Read the passage below and then answer questions 10 – 12.



The lion, the donkey and the zebra were very good friends. They lived together in the forest. They also hunted together and ate together as well. Whenever the lion went out to hunt, her children would be well taken care of. The problem was she did not know who between the zebra and the donkey looked after her cubs. Every time she dared ask; both would respond and say they did. This confused her even more.

To make matters worse, the lion was unable to identify who the donkey was and who the zebra was because they looked so much alike. One day, the lion came up with an idea to paint stripes so that he could tell them apart. He would thereafter hide somewhere in the bush and watch who actually cared for her cubs. When he did so, all the other donkeys that were in the land felt that their friend the zebra was more beautiful and decided to also paint stripes on themselves.

The hare who did the job for the lion had an idea; he would charge them more. But before he decided on that, he talked to the lion. The lion was not only angry with the hare but also with the



donkeys. Eventually the hare charged them double the price and painted them the same way he had done to the zebras. To date, the lion cannot know who is the zebra and which one is the donkey. Their friendship died as well.

10. Why was the lion unable to distinguish between the zebra and the donkey?
- A. animals looked beautiful.
 - B. They both responded whenever the lion asked a question.
 - C. They looked so much alike.
 - D. They had proved to be caring to the cubs.
11. The words to date have been used to mean
- A. until now.
 - B. ven today.
 - C. till kingdom come.
 - D. up to when.
12. The best title for the passage above would be
- A. The lion and the donkey.
 - B. Why zebras have stripes.
 - C. The lion and the zebra.
 - D. The end of the lion, donkey and zebra friendship.

Read the passage below and then answer questions 13-15.

The benefits of being a true sportsperson are many. A successful sportsperson in school gets an opportunity to represent their school at different levels. This builds self-esteem and provides great inspiration to others.

Think of athletes like Eliud Kipchoge, Vivian Cheruiyot, Geoffrey Kamworor to mention just but a few. Do they not inspire you? I believe they do. They all started by participating in sports while in school.

Character and personal growth are other important things you can achieve from sports. Being a true sportsperson requires a great deal of discipline. You mould yourself into becoming the best at what you do. It creates a sense of worth and pride to be a role model to others. One also grows financially. The sports industry is one of the most rewarding industries in the world today. Sportspeople are highly paid, especially when they get to national and international levels.

There is also the benefit of developing teamwork and problem-solving skills. Working to achieve a common goal in a group teaches group discipline and selflessness. You learn to effectively communicate and reason out the best way for all, as well as to accommodate the views of others.

13. What do we learn about successful sportspersons?
- A. They win in all competitions they participate in.
 - B. They are applauded by their schoolmates.



- C. they become rich and prosperous.
 D. They get a chance to represent their school at various levels.
14. Three of the following come as a result of being a good sportsperson except.
- _____
- A. You grow in person and character.
 B. You only become a team player.
 C. It creates a sense of worth and pride.
 D. You grow financially.
15. The passage above talks about _____.
- A. The benefits of sports.
 B. Representing your school in sports.
 C. What you get when you run.
 D. Choosing the career of athletics.

Read the passage below. It contains blank spaces numbered 16 – 20. For each blank space, choose the best alternative from the given four.

Cities __16__ towns like Nairobi tend to have a __17__ mix of culture and __18__ which can help when making new friends and meeting people. Most __19__ are easy to access. Restaurants and cinemas are in __20__ in these busier areas and you often find new attractions will open in a city before anywhere else.

	A	B	C	D
16.	and	with	in	to
17.	more greater	greater	greatest	great
18.	ethnicities	ethnicity	ethnisities	athnicities
19.	amenitis	amenities	amenitits	amenites
20.	scarce	few	rare	plenty

For questions 21-27, choose the best alternative to complete the given sentence.

21. She is a victim _____ circumstances.
- A. for
 B. by
 C. with
 D. of
22. This is the teacher _____ she called.
- A. who
 B. whom
 C. which



- D. what
23. The calf was sleeping in _____ shed.
- A. it's
 - B. its
 - C. it has
 - D. their
24. During public holidays, there are _____ cars on most roads.
- A. few
 - B. a few
 - C. little
 - D. much
25. " _____ dress over there will have to be mended," said the seamstress.
- A. This
 - B. Those.
 - C. These.
 - D. That.
26. Kenny is a _____.
- A. big, fierce, Kenyan, brown dog
 - B. brown, fierce, big, Kenyan dog
 - C. fierce, big, brown, Kenyan dog
 - D. fierce, brown, big, Kenyan dog
27. When we were in Mombasa, lunch was served on a _____.
- A. round, white, wooden table
 - B. wooden, white, round table
 - C. white, round, wooden table
 - D. round table, white, wooden.

For questions 28 and 29, choose the alternative that means the same as the underlined word(s)

28. The head teacher spoke in very few words.
- A. briefly
 - B. angrily
 - C. arrogantly
 - D. softly
29. The rude boy was punished severely.
- A. polite
 - B. tall
 - C. impolite
 - D. soft-spoken

For question 30, choose the alternative with the correctly punctuated sentence.



30.

- A. "the dog ate my homework," he said.
- B. "The dog ate my homework, he said."
- C. "The dog ate my homework," he said.
- D. "The dog ate my homework" he said.



A large section of the page is filled with horizontal ruling lines. Each ruling line consists of a solid top line, a dashed middle line, and a solid bottom line, providing a guide for handwriting or marking.



Blank lined area for marking schemes, consisting of multiple sets of horizontal lines (solid top and bottom lines with a dashed middle line).





KENYA PRIMARY SCHOOL EDUCATION ASSESMENT

KPSEA 2023 BLUE PRINT PREDICTION

INTEGRATED SCIENCE

Time: 1 hour 40 minutes

READ THESE INSTRUCTIONS CAREFULLY.

1. You have been given this question booklet and a separate answer sheet. The question bookier contains 50 questions.
2. Do any necessary rough work in this booklet.
3. When you have chosen your answer, mark it on the **ANSWER SHET**, not in the question paper.

HOW TO USE THE ANSWER SHEET.

4. Use an ordinary pencil only.
5. Make sure that you have written on the answer sheet.

YOUR INDEX NUMBER

YOUR NAME

NAME OF YOUR SCHOOL

6. By drawing a **dark line** inside the correct numbered boxes mark your full index number (i.e. school code Number and the three -figure candidate's Number) in the grid near the top of the answer sheet.
7. Do not make any marks outside the boxes.
8. Keep your answer sheet as clean as possible and Do not fold it."
9. For each question 1-30 four answers are given. The answers are lettered A, B, C, D. In each case Only One of the four answers is correct. Chose the correct answer.
10. On the answer sheet show the correct answer by drawing a dark line inside the box in which the letter you have chosen is written.
11. Your dark line Must be within the box. Make your line as dark as possible.
12. For each question **Only One box** is to be marked in each set of four boxes.

Candidates should check the question papers to ensure that all questions are printed.



1. Milly observed a certain animal which had the following characteristics;

- i. *It had three pairs of legs.*
- ii. *It had three body parts.*
- iii. *It had compound eyes.*
- iv. *It had a pair of wings and antennae.*

Which of the following animals has the characteristics above?

- A. Ant
- B. Housefly
- C. Snail
- D. Spider.

2. During a Science lesson, Imani taught her classmates on the functions of an ovary. Which one of the following statements is true?

- A. It produces the female sex cells.
- B. It is where the embryo develops.
- C. It receives sperms from the penis.
- D. It is where fertilization takes place.

3. Otoy educated his friends on the ways of conserving water. Which one of the following is not a way in which water is conserved?

- A. Reusing water.
- B. Construction of dams.
- C. Harvesting rain water
- D. Building gabions.



4. When interacting with computing devices, Mr Omondi likes editing spreadsheet documents. Which of the following is a button used to edit information?

- A. Clipboard
- B. Font
- C. Enter
- D. Styles

5. Kakuma went out to see flowering plants.. Which one of the following is not a flowering plant?

- A. Mango
- B. Maize
- C. Tomato
- D. Mushroom

6. Miano was telling his brother of how plants can harm us. Which one of the following is not true?



- A. Some plants prick people with their thorns.
- B. Plants reproduce through pollination.
- C. Some plants are poisonous and can cause death.
- D. Some plants cause an irritation to the skin.

7. Grade 6 learners learned on how to protect themselves from harmful plants. Which one of the following is not a way of protection from harmful plants?

- A. Wearing gloves
- B. Wearing goggles.
- C. Walking barefoot in an area with thorny plants.
- D. Wearing an overcoat.

8. Kongo asked his teacher on the importance of flowering plants. The following are true except they

- A. make the environment beautiful
- B. provide food for human beings and animals
- C. make the environment dirty when the flowers wither
- D. keep the air clean.

9. Esther was carrying out an experiment with acids. She realized that she had substance Z that is a base. Which one of the following is likely to be substance Z?

- A. Wood ash.
- B. Hydrochloric acid
- C. Orange juice.
- D. Lemon juice.

10. Mwema was walking around his farm when he saw a green non-flowering plant. Which one of the following was likely to be the plant?

- A. Beans
- B. Maize
- C. Moss
- D. Mango

11. Linturi and Miano were watching a football game. What is the name given to people watching a football match?

- A. Participan
- B. Coach
- C. Referees
- D. Spectators



11. Grade six learners were discussing about air pollution. Which of the following is not an air pollutant?

- A. Aerosol sprays.
- B. Burning splastics.
- C. Broken pieces of glass
- D. Gases from vehicles exhausts.

13. Abdalla wanted to know about the ways he would take care of the community's recreation facilities. Which one of the following is not a way of taking care of the facilities?

- A. Littering.
- B. Finding alternative sources of fuel
- C. Ensuring tree planting is done
- D. Drawing graffiti on walls

14. Otieno and Lydia were playing water games after a swimming class. Which one of the following is a water game?

- A. Bunch start.
- B. Shoulder shrug technique.
- C. C. Freeze tag
- D. Side shuffle

15. David decided to perform an individual balancing. The following are ways in which he performed the balancing except

- A. hand balance
- B. hand balance with split
- C. freeze tag.
- D. hand walk

16. Grade 6 learners went for a camp. They decided to use the following methods to preserve food. Which one of the following is not a method of preserving food?

- A. Smoking
- B. Salting
- C. Drying
- D. Cooking

17. The following are outdoor activities that can be done during camping except?

- A. pitching tents
- B. collecting firewood



- C. loitering around the campsite
- D. serving packed food

18. Which one of the following is not a safety measure for outdoor activities?

- A. Putting off night fires before going to sleep.
- B. Looking for landmarks at the campsite and hikes.
- C. Feeding animals around their tent.
- D. Clearing off any obstacles around the composite

19. Grade 7 learners were having warm up activities for the scissor technique, Which one of the following is not a warm up activity for the scissor technique?

- A. Jumping jacks.
- B. Side shuffles
- C. Lunges
- D. Stretch and spell

20. The Sports officer in Katani village went to inspect the equipment for the upcoming shot-put event. Which one of the following is not a shot-put equipment in the school?

- A. Shot put carriers
- B. Cross bar
- C. Distance marker.
- D. Throwing balls



21. Itindi is planning to practice the scissor technique on Friday. Which one of the following is a phase of the scissor technique?

- A. The flight.
- B. The Stance
- C. Grip
- D. Release

22. Mrs. Doria pointed at the area a shot is put. Which of the following areas did she point?

- A. Throwing ball
- B. Shot put sector
- C. Stance
- D. Shot put

23. Which of the following is **not** a part of the javelin spear?

- A. Metal tip



- B. Cord grip
- C. Javelin rack
- D. Shaft

24. Musyoka is a very talented athlete with a good character. Which one of the following is not an importance of having a good character for a sports person?

- A. It boosts the self-confidence of the sports person.
- B. It allows the sports person have a negative attitude.
- C. It allows achieving of goal
- D. It allows teamwork amongst sports people.

25. Toria wants to use the shoulder shrug technique for a race. At what point should she use the technique?

- A. In the middle of the race.
- B. In the beginning of the race.
- C. When finishing the race
- D. When overtaking competitors

26. Grade 6 learners have all become adolescents. Which one of the following is an emotional change they undergo?

- A. Mood swings.
- B. Growth of pubic hair.
- C. Increase in height and weight.
- D. Breaking of the voice.

27. Mwadime wants to start exercising from Monday. The following are the importance of physical exercise except?

- A. Controlling weight
- B. It improves cardio-respiratory fitness
- C. It increases the risk of getting infections
- D. It reduces anxiety.

28. Kiptoo was experiencing changes in his body. Which one of the following is not a change that occurs in boys?

- A. Growth of an acne.



- B. Growth of beards.
- C. Broadening of shoulders.
- D. Broadening of the hips.

29. Clara wanted to buy cosmetics from a beauty shop. The following are examples of cosmetics except?

- A. Ring
- B. Lipstick
- C. Powder
- D. Lotion

30. Which one of the following is a communicable disease?

- A. Obesity
- B. Cancer
- C. Asthma
- D. Tuberculosis

31. Grade six learners were discussing on dangers of misuse of cosmetics. Which of the following is not a danger of misuse of cosmetics?

- A. Enhance the appearance of the face.
- B. Permanent dark spots.
- C. Falling off of hair
- D. Skin damage

32. Which one of the following is not an importance of budgeting?

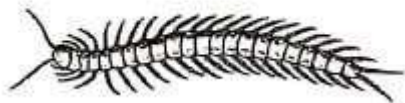
- A. It makes us to have no money
- B. Saves time
- C. Helps us save money
- D. Helps use money wisely

33. Opetu and Miano wanted to draft a budget. Which one of the following factors is not considered when making a budget?

- A. The amount of money.
- B. The appearance of the owner.
- C. The expenses
- D. The items to be bought



34. What is the name of invertebrate shown below



- A. Millipede
- B. Centipede
- C. Snake
- D. Caterpillar

35. Evelyn loves wearing decent clothes. All the following are true on the importance of decent dressing. Which one is not?

- A. It helps develop self-respect
- B. Helps develop self-esteem
- C. Makes one look odd
- D. Helps develop self-acceptance.

36. Madam Mugambi asked 4 learners to state the food they had taken during supper the previous night. They stated as follows;

Atieno: Ugali, eggs, kales.

Levis: Chapati, green grams, meat.

Judy: Green bananas, potatoes, avocado.

Juma: Spaghetti, rice, chicken.

Who among the following learners took a balanced diet?

- A. Juma
- B. Levis
- C. Judy
- D. Atieno

37. Grade 6 learners were asked to state ways of preserving cereals and pulses. Which one of the following is not a way of preserving cereals and pulses?

- A. Sun-drying
- B. Use of wood ash
- C. Use of salt
- D. Use of chemicals.

38. Mr Lee listed the following signs and symptoms of a certain nutritional deficiency disease.

- i. Brownish thin hair.



- ii. Swollen body parts like arms, feet and face.
- iii. Sores at the corners of the mouth.
- iv. Protruding belly.

Which disease was he talking about?

- A. Kwashiorkor
- B. Obesity
- C. Rickets
- D. Marasmus.

39. One of the following is a reason why we preserve meat. Which one?

- A. To remove fat
- B. To make it more
- C. To make it tastier
- D. To make it last longer

40. Grade 6 learners were learning about soil erosion. Which of the following best explains the term erosion?

- A. It is the practice of planting trees together with crops.
- B. It is whereby the top soil is made more fertile.
- C. It is the practice of covering crops with grass or leaves.
- D. It is the process where the top soil is gradually removed from one place to another by use of water, wind, animals or human activities.

41. Ngotoi was teaching about the importance of deterrents in a farm. All the following are true about deterrents except

- A. They help us co-exist with wild animals in our environment
- B. Light reflections enable distraction of birds' eyesight to keep them off
- C. Killing animals to keep them away
- D. They help us trap wild animals and release them to the forest for safety.

42. Which of the following is a planting material?

- A. Splits
- B. Fruits
- C. Manure
- D. Ponds

43. A grade 5 pupil was writing down notes on water conservation for plants in nurseries. He wrote down the following points.



- i. *Building of gabions*
- ii. *Terracing*
- iii. *Weeding*
- iv. *Shading.*

Which one of the above was a correct point for the water conservation?

- E. Building of gabions
- F. Terracing
- G. Weeding
- H. Shading

44. Teacher Charles gave grade 6 learners a chart that had information about of sunken seed beds. Which one of the following is false about a sunken seed bed?

- A. They are used during the dry season
- B. They are used as nursery bed or seed beds
- C. It allows minimal loss of moisture
- D. They are used only for vegetable seedlings

45. Sakina's granary has been infested with mice. Otumbo suggested the following ways to control the mice.

- i. Using a hand-held gong.
- ii. Using repellent crops.
- iii. Mulching.
- iv. Use of burnt materials.



Which one of the above suggestions is not appropriate?

- I. Using a hand-held gong
- J. Using repellent crops
- K. Mulching
- L. Use of burnt materials.

46. The following are ways of managing creeping crops except by

- A. Watering
- B. Weeding
- C. Mulching
- D. Slashing the crops down.

47. Koine and Tuma went to a farm and spotted climbers like passion fruits and kiwi. What are climbers?

- A. These are plants with strong stems that provide support.



- B. These are plants with long and weak stems that need to be supported to grow upward
- C. They are plants that have fibrous roots
- D. These are plants that grow along the ground.
48. Miriam mounted planting materials used to grow climbing fruits. Which one of the following is matched with its correct planting material?
- A. Berries - Seeds
- B. Gooseberry - Cuttings
- C. Kiwi - Seeds
- D. Passion - Seeds
49. Why should you wear gloves when handling a classmate who is nose bleeding?
- A. To make the hands look smart.
- B. To avoid infections
- C. To keep the hands warm
- D. Fear of seeing blood
50. Which one of the following is not an importance of watering seedlings?
- A. For germination
- B. For moisture
- C. To soften the seed coats
- D. To kill the plant



KENYA PRIMARY SCHOOL EDUCATION ASSESMENT

KPSEA 2023 BLUE PRINT PREDICTION

KISWAHILI

MUDA: Saa 1 dak 40

SOMA KWA MAKINI MAAGIZO YAFUATAYO.

1. Umepewa kijitabu hiki cha maswali na karatasi ya kujibia. Kijitabu hiki kina maswali 30.
2. Ikiwa utataka kuandika chochote si jibu andika katika kijitabu hiki.
3. Ukisha chaguajibu lako ionyeshe katika KARATASIYAMAJIBU na wala sio katika kijitabu hiki cha maswali.

JINSI YA KUTTIMIÁ KARATASI YA MAJIBU.

4. Tumia penseli ya kawaida. 5. Hakikisha ya kwamba yafuatayo yameandikwa katika karatsi ya majibu.

NAMBARIYAKO YA MTIHANI

JINA LAKO

JINA LA SHULE SHULE YAKO

6. Kwa kuchora kistari katika visanduku vyenye namba zinazokuhusu, onyesha namba ako kamili ya mtihani yaani namba ya shule, na zile namba tatu za mtahiniwa) katika sehemu iliyotengwamwanzo wa karatasi ya majibu.
7. Usitie alama zozote nje ya visanduku,,
8. Iweke safi karatasi yako ya maibu.
9. Kwakila swali 1-30 umepewamajibu manne. Majibu'ha o yameonyeshwakwä herufi A, B,D naD. Ni jibu **MOJA** tu kati ya hayo manne ambalo ni sahihi. Chagua jibu hilisi
10. Kwenye karatasi ya majibu,jibu sahihi lionyeshwe kwakuchora kistari katika kisanduku chenye herufi uliyochagua kuwa ndilojibu.
11. Chora kistari chako vizuri. Kistari chako kiwe cheusi na kisijitokeze nje ya kisanduku.
12. Kwakila swali, chora kistari katika kisanduku kimoja tu kati ya visanduku ulivyopewa.



Candidates should check the question papers to ensure that all questions are printed.

Soma kifungu kifuatacho kisha ujibu maswali yanayofuata.



Hapo zamani za kale, katika ulimwengu wa wanyama, paliishi Swara na **Mbweha Swara na Mbweha walipendana kama chanda na pete**. Wawili hao walikuwa na familia zao. Kila mmoja alikuwa na nyumba yake, mke pamoja na watoto. Mbweha alikuwa na watoto sita naye Swara alikuwa na watoto watano. Marafiki hao **walifanya mambo yao kwa ushirikiano mkubwa**. Walifuga wanyama kama vile mbuzi, ng'ombe, kondoo na ngamia. Wanyama hao waliwapa faida ya maziwa na wakati fulani kuwafanyia kazi.

Tofauti kubwa iliyokuwapo ni kuwa Swara alipenda shughuli za kilimo naye Mbweha alipenda sana ufugaji. Swara alipouza maziwa yake, alipanda miche kisha akaamua kuwekeza katika kilimobiashara. Alipanda mimea kama vile michungwa, mihindi, mitufaha na mingine. Alipovuna mazao ya mimea hiyo, alitoa gharama ya ukulima huo kisha akabaki na faida kubwa mno. Kwa kuwa kazi ilikuwa nyingi shambani, aliamua kuwapa wanyama wengine ajira. Kila alipovuna mazao yake, aliyauza na kuweka pesa alizozipata katika benki. Hiyo ilikuwa njia ya kuhakikisha kuwa pesa zake zisingeibwa na wahalifu. Uzalendo wa Swara ulijulikana sana alipolipa ushuru kutokana na mapato.

Kwa sasa, marafiki hao wawili ni matajiri wakubwa. Wakazi katika eneo hilo wanapenda sana kilimo, ufugaji na biashara. Vilevile, wao hulipa ushuru wa mapato mara kwa mara. Wamejifunza kwa Swara na Mbweha kuwa kulipa ushuru kuna manufaa makubwa katika nchi.

1. Ukirejelea maisha ya Swara, ni jambo gani lililokuwa la mwisho kati ya mambo haya?
 - A. kulipa ushuru
 - B. kuuza mazao ya shambani
 - C. kufuga wanyama
 - D. kuanzisha kilimo
2. Maneno '**walifanya mambo yao kwa ushirikiano mkubwa**' yanaonyesha kuwa Swara na rafiki yake walizingatia methali gani?
 - A. Achanikaye kwenye mpini hafi njaa.



- B. Majuto ni mjukuu huja baadaye.
C. Mkono mmoja hauchinji ng'ombe.
D. Panya wengi hawachimbi shimo.
3. Ni kweli kuwa kama Swara asingekuwa na mifugo;
A. angekosa wanyama wa kumfanyia kazi shambani.
B. angekosa pesa za kuweka katika benki.
C. angeshindwa kabisa kulipa ushuru.
D. angeshindwa kuanzisha kilimo chake.
4. Benki ilimpa Swara manufaa gani?
A. Ilimpa mkopo alipokosa pesa.
B. Ilimtunzia pesa zake.
C. Ilimpa ushahuri kuhusu kilimo.
D. Ilimsaidia kuuza mazao yake.
5. Marafiki wanaozungumziwa katika ufahamu huu walikuwa na jumla ya watoto wangapi?
A. 6
B. 11
C. 5
D. 4
6. Swara alikuwa mzalendo kwa kuwa;
A. aliipenda sana nchi yake.
B. aliwapa wenzake ajira.
C. alilipa ushuru kutokana na mapato.
D. alikuwa rafiki wa Mbweha.
7. Kifungu hiki kinaeleza umuhimu wa mambo yafuatayo **isipokuwa**;
A. kilimo
B. biashara
C. ufugaji
D. elimu
8. Maneno '**Swara na Mbweha walipendana kama chanda na pete**' ni mfano wa;
A. tashbihi ya umbo
B. tashbihi ya tabia
C. istiara ya umbo
D. nahau ya upendo

Soma makala yafuatayo kisha ujibu maswali yanayofuata.





Kijiji cha Ingusi kinapatikana kati ya masoko manne. Soko la Butere hujulikana sana kwa ununuzi wa mifugo kama vile mbuzi, nguruwe, kondoo na mbuzi. Katika soko hilo, kunapatikana nguo za watu wa kike na kiume, watoto kwa watu wazima. Wanaotaka kununua viungo vya upishi kama vile mafuta, vitunguu, nyanya na chumvi nao wanaweza kununua katika soko hilo. Upande mwingine, utapata soko la Mumias. Kwenye soko hilo, unaweza ukanunua mifugo mbalimbali. Aidha, unaweza ukununua jezi za timu mbalimbali kama vile Gor Mahia, AFC Leopards, Manchester United, PSG na kadhalika. Vifaa mbalimbali vinavyotumika nyumbani kama vile sufuria, vikombe, mabeseni, vijiko na visu viliuzwa sokoni hapo. Nyanya, mafuta ya kupikia, vitunguu, mdalasini na bizari pia huweza kupatikana katika soko hilo.

Soko la Imanga nalo linapatikana karibu na kijiji cha Ingusi. Kwenye soko hilo la Imanga, wanunuzi hupata bidhaa nyingi zisizopatikana katika masoko hayo mengine. Kile kinachopatikana kwenye soko hilo na lile la Butere ni viungo vya kupikia. Soko la Ugunja linafahamika kwa bidhaa moja muhimu sana. Wakazi wa Ingusi huenda kwenye soko la Ugunja kwa sababu ya kununua samaki mbalimbali kama vile mkunga, kipepeo, pweza na kambare.

9. Ni nini kinachopatikana katika masoko matatu?
 - A. vifaa vya kupikia
 - B. viungo vya kupikia
 - C. jezi za kuchezea
 - D. mavazi mbalimbali
10. Waliotaka kununua mifugo wangetembelea masoko gani?
 - A. Butere na Imanga
 - B. Butere na Mumias
 - C. Mumias na Imanga
 - D. Ugunja na Butere
11. Soko lipi linalojulikana kwa bidhaa za aina moja pekee?
 - A. Mumias
 - B. Butere
 - C. Imanga
 - D. Ugunja
12. Kifungu kimetaja samaki wa aina ngapi?
 - A. 4

- B. 3
C. 5
D. 6

Soma mazungumzo yafuatayo kisha ujibu maswali yanayofuata.

(Kando ya barabara, Farida anakutana na Juma akiwa amebeba jembe.)

Farida: Hujambo Juma?

Juma : Sijambo Farida. Umeadimika sana. (*Wanashikana mikono wakitabasamu.*)

Farida: Si sana. Je, unatoka wapi na jembe?

Juma : Mimi pamoja na vijana wenzangu tumekuwa **tukichanga bia** shambani. Farida

Farida: Hewaa! Jambo zuri sana. Nami ninatoka katika shughuli za kufanya mazoezi. Tangu nilipokuwa na umri mdogo, nimekuwa _____ nikifanya mazoezi mara kwa mara.

Kesho nitahamia kule Marekani, nimechaguliwa kuwa mchezaji katika timu moja ya kandanda.

Juma : Hongera. Umuzi huo ni wa busara mwenzangu. Ningependa nifike nyumbani ili nipumzike kiasi.

Farida: Buriani Juma.

Juma : Buriani dawa. (*Wanapigana pambaja kisha kila mmoja anaondoka.*)

13. Ni kweli kuwa Farida;

- A. anapenda masomo.
B. anapenda kilimo.
C. anapenda afya yake.
D. anapenda nchi yake.

14. Nahau 'tukichanga bia' ina maana gani jinsi ilivyotumika katika mazungumzo?

- A. tukilima
B. tukifanya bidii
C. tukishirikiana
D. tukizungumza

15. Ni kweli kuwa Farida na Juma;

- A. wangeonana tena shule zikifungwa.
B. hawakutarajia kuonana hivi karibuni.
C. walisomea katika shule moja.
D. walikuwa marafiki kwa muda mrefu.

Chagua jibu lifaalo ili kujazia nafasi zilizoachwa.

Kenya ni nchi __16__ makabila mengi. Makabila haya yanapatikana nchini __17__. __18__ tuishi vizuri, tunafaa kuwa na amani na umoja kati __19__. Umoja huo utatuwezesha kupiga hatua za kimandeleo na __20__ uchumi wetu.

	A	B	C	D
16.	enyewe	lenye	yenye	lenyewe



17.	mote	pote	yote	kote
18.	Ikiwa	Ila	Ili	Lakini
19.	yetu	yenu	yao	yangu
20.	kujenga	kuujenga	kuyajenga	kumjenga

21. Chagua sentensi iliyo sahihi.
- Mgeni mwenye amewasili ni huyu.
 - Hii kalamu ilinunuliwa jana.
 - Mtoto mgani mwenye mikono safi?
 - Walitupa kalamu nzuri tukafurahi.
22. Ishara gani kwenye tarakilishi ambayo huonyesha **chapa koza**?
- I
 - B
 - X
 - U
23. Tambua aina za maneno yaliyopigiwa mistari.
Wewe una kalamu ambayo ni nzuri.
- kivumishi, kivumishi, kiwakilishi
 - kiwakilishi, kivumishi, kivumishi
 - kiwakilishi, kiwakilishi, kivumishi
 - kivumishi, kielezi, kivumishi
24. Kipande cha kwanza cha mshororo wa shairi huitwaje?
- ukwapi
 - utao
 - vina
 - mizani
25. Tambua umoja wa;
Makazi yao yamezungushiwa nyua nzuri.
- Makazi yao yamezungushiwa ua mzuri.
 - Makazi yake yamezungushiwa ua mzuri.
 - Kazi yake imezungushiwa ua mzuri.
 - Makazi yake yamezungushiwa ua zuri.
26. Kiungo cha mwili ambacho huhifadhi mkojo tumboni huitwa _____.
- figo
 - pafu
 - kibofu
 - moyo
27. Chagua ukubwa wa;
Mzee huyo amebeba ndoo iliyokuwa chini ya mti.
- Jizee hilo limebeba jidoo lililokuwa chini ya jiti.
 - Kizee hicho kimebeba kidoo lilichokuwa chini ya kijiti.
 - Zee huyo limebeba doo lililokuwa chini ya jiti.



- D. Zee hilo limebeba doo lililokuwa chini ya jiti.
28. Soma ni kwa 'somewa' kama vile nyoa ni kwa _____.
- A. nyoewa
 - B. nyoana
 - C. nyolewa
 - D. nyoleka
29. Nomino gani inayopatikana katika ngeli ya U-U kati ya nomino zifuatazo?
- A. ubua
 - B. ukuta
 - C. unga
 - D. mkono
30. Alama gani ya kuakifisha ambayo hutumika kuanzishia orodha?
- A. koloni
 - B. ritifaa
 - C. hisi
 - D. koma



Lined writing area consisting of multiple sets of horizontal dashed lines for marking schemes.





KENYA PRIMARY SCHOOL EDUCATION ASSESMENT

KPSEA 2023 BLUE PRINT PREDICTION**MATHEMATICS****Time: 2 HOURS****READ THESE INSTRUCTIONS CAREFULLY.**

1. You have been given this question booklet and a separate answer sheet. The question bookier contains 30 questions.
2. Do any necessary rough work in this booklet.
3. When you have chosen your answer, mark it on the **ANSWER SHET**, not in the question paper.

HOW TO USE THE ANSWER SHEET.

4. Use an ordinary pencil only.
5. Make sure that you have written on the answer sheet.

YOUR INDEX NUMBER**YOUR NAME****NAME OF YOUR SCHOOL**

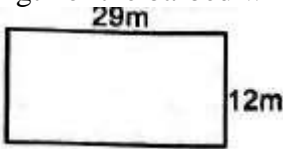
6. By drawing a **dark line** inside the correct numbered boxes mark your full index number (i.e. school code Number and the three -figure candidate's Number) in the grid near the top of the answer sheet.
7. Do not make any marks outside the boxes.
8. Keep your answer sheet as clean as possible and Do not fold it."
9. For each question 1-30 four answers are given. The answers are lettered A, B, C, D. In each case Only One of the four answers is correct. Chose the correct answer.
10. On the answer sheet show the correct answer by drawing a dark line inside the box in which the letter you have chosen is written.
11. Your dark line Must be within the box. Make your line as dark as possible.
12. For each question **Only One box** is to be marked in each set of four boxes.

Candidates should check the question papers to ensure that all questions are printed.



1. A football match at Kasarani stadium was watched by five hundred and eight thousand, three hundred and seventy four people. How many people watched the match in symbols?
 - A. 58374
 - B. 508374
 - C. 580374
 - D. 548370
2. A farmer planted 48 seedlings in 7 rows. Round off the product of 48 and 7 to the nearest 10?
 - A. 336
 - B. 324
 - C. 330
 - D. 340
3. A grade 5 learner listed the numbers below. Which of the following numbers is not divisible by 9?
 - A. 72
 - B. 81
 - C. 59
 - D. 63
4. Kelvin had 9 bananas and 12 oranges. What is the highest number of friends that he could equally share the foods?
 - A. 12
 - B. 3
 - C. 36
 - D. 21
5. The digits 4 and 2 in the number 4 582 are interchange to form a new number. What is the difference between 4 582 and the new number formed?
 - A. 1998
 - B. 2002
 - C. 2098
 - D. 1996
6. James wrote the number pattern below. 7, __21, 28, 35, __, 49 What is the sum of the missing numbers in the pattern above?
 - A. 14
 - B. 42
 - C. 56
 - D. 7
7. A factory sold 345346 kg of maize flour in February and 25337 kg of maize flour in May. How many kilograms did the company sell altogether?
 - A. 320009kg
 - B. 370681kg
 - C. 370683kg
 - D. 360673kg

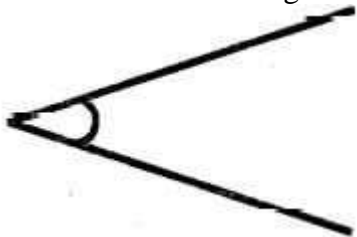


8. George bought a second-hand car for sh. 154920. He spent sh. 23700 on repairs. How much money did he spend altogether?
- A. Sh.178620
B. Sh.177620
C. Sh.131220
D. Sh.187620
9. A fun day at a school was attended by 900 people. 427 of the attendees were adult females and 103 were adult males. How many children attended the fun day?
- A. 520
B. 420
C. 370
D. 473
10. A train has 16 coaches. Each coach carries 672 people. How many people do the train carry in a day?
- A. 10752
B. 9342
C. 7683
D. 11252
11. A lorry was used to transport 320 pieces of timber to the workshop per trip. If the lorry made 14 trips, how many pieces of timber did it transport altogether?
- A. 4480
B. 4408
C. 334
D. 70
12. Below is Kambu's farm. He used three strands of barbed wire to fence the farm. What length of the barbed wire did he use?
- 
- A. 438m
B. 126m
C. 258m
D. 246m
13. A company employed 680 employees. The company shared them equally among 40 groups. How many employees were in each group?
- A. 17
B. 34
C. 62
D. 28
14. A fruit vendor spent sh.1475 to buy fruits. She bought a total of 59 fruits. How much did each fruit cost?
- A. Sh. 25
B. Sh. 35

- C. Sh.40
D. Sh. 61
15. There were 48 apples in a basket. A teacher shared the apples equally among 12 learners. How many apples did each learner get in Roman numerals?
A. X
B. IX
C. IV
D. VI
16. After a. athletic competition, 56 litres of Juice was prepared for de athletes. If they drank 39 litres of the juice, how much juice remained in millilitres?
A. 17 ml
B. 170 ml
C. 17 000 ml
D. 1 700 ml
17. Grade 6 learners were required to rearrange the following numbers in an ascending order. Which of the following is the correct order
A. 155755, 157555, 155575, 155557
B. 155557, 155575, 155755, 157555
C. 157555,155575,155755,155557
D. 155755,155575,157555,155557
18. Sixty-five thousand, one hundred and fifty bags of beans were harvested in a certain season. If thirty five thousand, seven hundred were consumed, how many bags of beans remained?
A. 30650
B. 29450
C. 90850
D. 20650
19. Aisha bought $\frac{1}{4}$ kg of margarine and $\frac{1}{2}$ kg of rice. What was the total mass of the two products?
A. $\frac{3}{4}$ kg
B. $\frac{2}{6}$ kg
C. $\frac{1}{4}$ kg
D. $\frac{1}{6}$ kg
20. Grade 5 learners made following numbers cards. Which one of the following is a multiple of 3?
A. 520
B. 507
C. 80
D. 97



21. Mr Hisabati drew an angle like the one shown below.



What is the name of the angle?

- A. Obtuse angle.
 - B. Reflex angle.
 - C. Acute angle.
 - D. Right angle.
22. Richard bought $8\frac{1}{4}$ kg of meat. His wife cooked $2\frac{3}{4}$ kg of it. What amount of meat remained?
- A. $4\frac{1}{2}$ kg
 - B. 6kg
 - C. 11kg
 - D. $5\frac{1}{2}$ kg
23. Ruben wrote the factors below. Which of the following are factors of 81?
- A. $2 \times 3 \times 4 \times 5$
 - B. $3 \times 3 \times 3 \times 3$
 - C. $2 \times 2 \times 2 \times 3$
 - D. $2 \times 3 \times 7$
24. During group discussion, learners were provided with the following numbers cards. 5,7,9,2,3 Which is the smallest 5-digit number that one can create from the numbers above?
- A. 92752
 - B. 75923
 - C. 23579
 - D. 32795
25. Faith stayed with her mother over the holiday for a week. How many hours did she stay with her mother?
- A. 48 hours
 - B. 148 hours
 - C. 168 hours
 - D. 84 hours
26. Gift bought three trays of eggs for her business. On her way home, ten eggs broke. How many eggs was she left with? [a tray has 30 eggs]
- A. 27
 - B. 90
 - C. 60
 - D. 80



The table below shows the number of animals in the Nairobi animal orphanage. Use the table below to answer questions 27 to 29

Zebra	Elephant	Giraffe	Buffalo
247	89	164	431

27. What is the difference between the number of buffalo and elephants in the orphanage?
- A. 342
 - B. 458
 - C. 520
 - D. 158
28. What is the sum of total population of the Zebra and Giraffe?
- A. 301
 - B. 123
 - C. 83
 - D. 411
29. What is the total population of animals in the animal orphanage?
- A. 336
 - B. 595
 - C. 931
 - D. 767
30. Gelindah has t cows, 24 goats and 17 sheep in his farm. Which of the following correctly represents the sum of animals in the farm?
- A. $t+17$
 - B. $t + 24 - 17$
 - C. $t - 24 + 17$
 - D. $t + 41$



KENYA PRIMARY SCHOOL EDUCATION ASSESMENT

KPSEA 2023 BLUE PRINT PREDICTION

CREATIVE ARTS, SOCIAL STUDIES & RELIGIOUS EDUCATION

Time: 2 hours

READ THESE INSTRUCTIONS CAREFULLY.

1. You have been given this question booklet and a separate answer sheet. The question bookier contains 30 questions.
2. Do any necessary rough work in this booklet.
3. When you have chosen your answer, mark it on the **ANSWER SHET**, not in the question paper.

HOW TO USE THE ANSWER SHEET.

4. Use an ordinary pencil only.
5. Make sure that you have written on the answer sheet.

YOUR INDEX NUMBER

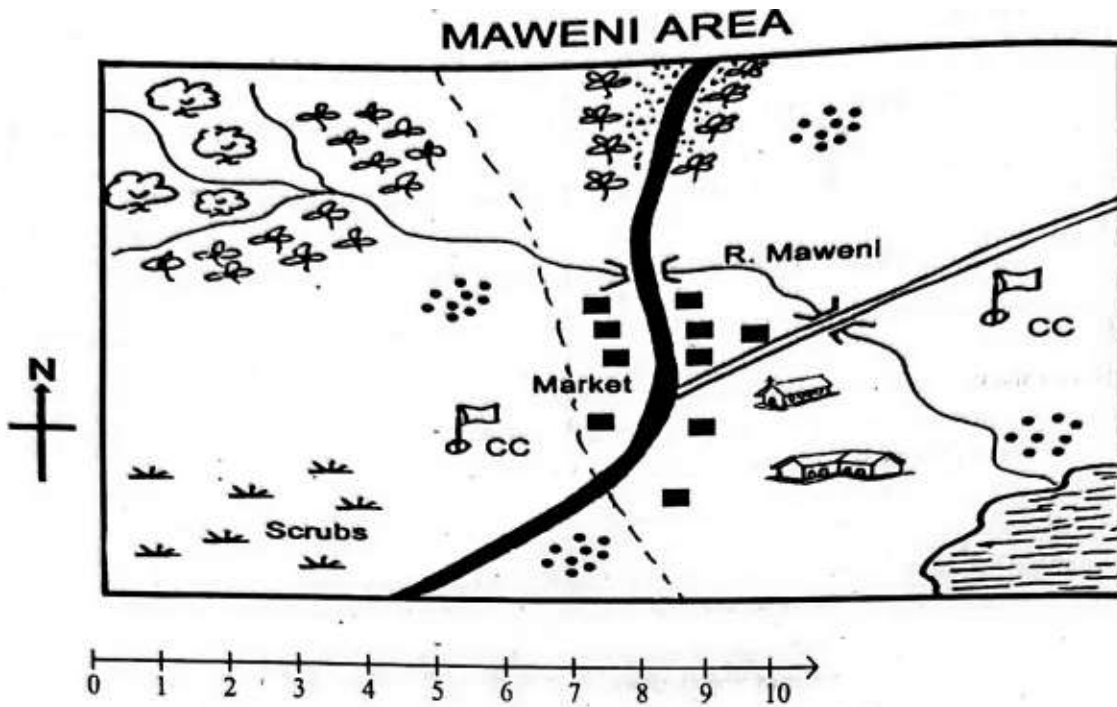
YOUR NAME

NAME OF YOUR SCHOOL

6. By drawing a **dark line** inside the correct numbered boxes mark your full index number (i.e. school code Number and the three -figure candidate's Number) in the grid near the top of the answer sheet.
7. Do not make any marks outside the boxes.
8. Keep your answer sheet as clean as possible and Do not fold it."
9. For each question 1-30 four answers are given. The answers are lettered A, B, C, D. In each case Only One of the four answers is correct. Chose the correct answer.
10. On the answer sheet show the correct answer by drawing a dark line inside the box in which the letter you have chosen is written.
11. Your dark line Must be within the box. Make your line as dark as possible.
12. For each question **Only One box** is to be marked in each set of four boxes.

Candidates should check the question papers to ensure that all questions are printed.





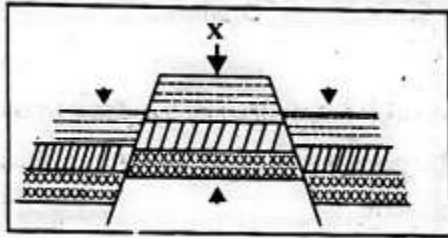
KEY

	Tarmac road		Church
C.C	Chief's Camp		Locational boundary
	Tea		Forest
	Murrum road		Settlement
	Coffee		River and Bidge
	Permanent buildings		Lake
	School		

- The land in Maweni area slopes from
 - North to West
 - West to South
 - North West to South East

- D. South East to North.
2. Which type of climate is experienced in the Northern part of Maweni area?
 - A. Hot and dry.
 - B. Wet and cool.
 - C. Cool and wet.
 - D. Hot and wet.
 3. The **main** means of transport in Maweni area is
 - A. road
 - B. air
 - C. water
 - D. pack animals.
 4. The following shows that Maweni area is developed except the presence of
 - A. farms
 - B. factories
 - C. roads!
 - D. markets
 5. Maweni area is **likely** to be headed by a
 - A. Chief
 - B. Governor
 - C. County commissioner
 - D. Member of County Assembly.
 6. Which of the following is an indigenous beef cattle?
 - A. Zebu
 - B. Fresian
 - C. Jersey
 - D. Ayrshire.
 7. Which of the following is a characteristic of large-scale farming?
 - A. Use of simple tools.
 - B. Crops are grown for home use.
 - C. Large tracks of land are cultivated.
 - D. Use of family labour.
 8. Grade 6 learners wanted to practice fishing. Which main inland fishing ground in Kenya can they visit?
 - A. Lake Turkana
 - B. Lake Victoria
 - C. River Tana
 9. Which language group in Eastern Africa has the least number of people?
 - A. Bantu
 - B. Cushites
 - C. Semites
 - D. Nilotes
 10. A tourist visited our country and saw writings on a banner at the airport about a citizen. Who is a citizen? A
 - A. family member

- B. person who owns property
C. person who runs from his/her country
D. person who belongs to a particular country.
11. During a group discussion, Grade 6 pupils listed the following examples of plains. Which answer did they give wrong?
A. Lotikipi
B. Nyambene
C. Bilesha
D. Kano.
12. Which of the following is **not** an element of weather?
A. Temperature
B. Sunshine
C. Cloud cover
D. Rain
13. Kibwana school has different leaders. Grade 6 learners asked their teacher to help them identify sections of leadership in the school. Which section of leadership is top in the structure in a school?
A. Head teacher
B. Deputy head teacher
C. Board of management
D. Parents.
14. The figure below shows a land forming process.

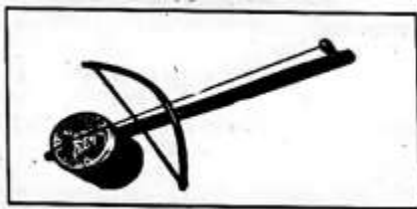


- The force marked X is
A. compression force
B. upthrust force
C. tension force
D. inertia.
15. Which one of the following is not a block mountain?
A. Aberdares Mountain
B. Mt. Pare
C. Mt. Ruwenzori
D. Mt. Kenya

PART B: MUSIC

16. Which of the following songs is wrongly matched with the purpose it serves?
A. Patriotic - Praise leaders of a country.

- B. Popular - Pass a certain message.
C. Lullaby - Comfort babies.
D. D. Sacred - Please God.
17. Which of the following values **cannot** be learnt from the East African Community Anthem?
- A. Selflessness
B. Patriotism
C. Tribalism
D. Peace.
18. Grade six learners sang the song 'Tushangilie Kenya' during a National day celebration. The boys sang in bass and tenor while the girls sang in soprano and alto. We can say that this song was sung in
- A. unison
B. harmony
C. voice parts
D. genders.
19. Anita came across the wind instrument below. Identify its name and the community where it is used in folk song performance.



- A. Obokano-Kisii
B. Adeudeu-Teso
C. Orutu - Luo
D. Sukuti-Luhya.
20. When playing a chivoti, we can change the pitch of the tune by
- A. covering and uncovering the holes.
B. pressing softly all the holes.
C. pressing hard all the holes.
D. only covering the holes.
21. Kilumi dancers carried drums to perform in Music Festivals. The performers wore sisal skirts and decorated themselves with necklaces. The presentation was good but its ending did not please the judges. Which feature of a folk song did they fail to apply at the end?
- A. Instrumentation
B. Costumes
C. Climax
D. Participants.

22. Which solfa syllable is shown below?



- A. do
 - B. mi
 - C. re
 - D. ti
23. Sofi wanted to make a drum. Which of the following materials was she likely to use?
- A. Hollow wood, animal skin, string.
 - B. Hollow wood, piece of cloth, strings.
 - C. Hollow wood, animal skin, metal rod.
 - D. Hollow wood, piece of cloth, animal skin.
24. Grade 6 pupils were asked to identify the French rhythm name given to a semibreve. What was their correct response?
- A. Ta-te
 - B. Taa-aa
 - C. Taa-aa-aa-aa
 - D. ta-te-taa
25. During Music Festivals, a certain group of performers presented a folk song and the audience understood its message clearly. This was probably due to
- A. many facial expressions
 - B. correct diction
 - C. varied gestures
 - D. high tempo.

PART C: ART AND CRAFT

26. Which factor is NOT considered when drawing two overlapping cylindrical forms?
- A. Proportion of forms
 - B. Balance of forms
 - C. Variation of lines
 - D. Inadequate space
27. Which one is NOT a 3-D artwork?
- A. sculpture
 - B. pottery
 - C. drawing
 - D. marionette
26. Shakilla wanted to draw a still life drawing. Which one of the following **cannot** be used to draw a still life?
- A. Imagination



- B. Tracing
C. Observation
D. Memory.
27. Linet was preparing to mount her artwork for an exhibition. Which of the following factors was she **not** likely to consider?
A. Proper labelling of the artwork.
B. Adequate lighting of the exhibition room.
C. Good arrangement of the artwork.
D. Suitable background music
28. Grade 6 pupils collected the following materials for making a door mat. Which of the following is an artificial material?
A. Raffia
B. Acrylic yam.
C. Reed
D. Sisal fibre.
29. John was making improvised crayons using bee wax. Which of the following explains why he used two containers when melting the wax?
A. To prevent fire accidents since wax is flammable.
B. To enable the colour to mix well with the wax.
C. To melt slowly.
D. To ensure consistency in melting.
30. Grade 4 pupils were provided with dye, strings, small stones and a white fabric for a dye and tie lesson. Which of the following techniques of tie and dye were they performing?
A. Knotting
B. Pleating
C. Folding
D. Stamping
31. A grade 4 pupil was preparing to paint an imaginative composition. However, he noticed that his brush was missing. Which of the following materials would he not use to improvise a paint brush?
A. Sisal fibre
B. Feathers
C. A sponge
D. Grass.
32. Celestine, a photographer was hired to take photos during a wedding ceremony. Which of the following aspects of photography was she not likely to observe
A. Centering of the subject
B. Proportionality
C. Background
D. ighting.
33. The following are conventional mounting materials except:-
A. Banana fibres
B. Manilla paper
C. Mounting board

D. Catridge paper

PART C: RELIGIOUS EDUCATION PART 1: Choose a section you have prepared for. Each section has 15 marks

CHRISTIAN RELIGIOUS EDUCATION

36. Who among the following people worked for 14 years in order to get the girl he loved?
- A. John
 - B. Job
 - C. David
 - D. Jacob.
37. Jesus promised to send His disciples a helper whom he sent on the day of Pentecost. On that day, many people were filled with
- A. tongues
 - B. fire
 - C. holy spirit
 - D. life.
38. In the parable of the good Samaritan, the man who fell into the hands of robbers was going to
- A. Jericho
 - B. Bethany
 - C. Jerusalem
 - D. Samaria.
39. Which one of the following is not part of God's creation?
- A. Water
 - B. Soil
 - C. Car
 - D. Man
40. During the baptism of Jesus, the Holy Spirit came down in form of a
- A. pigeon
 - B. dove
 - C. duck
 - D. raven.
41. During break time, you find your best friend opening your bag without your permission. What is the best action to take?
- A. Report to the teacher.
 - B. Forgive him and tell him to ask for anything he wants.
 - C. Discuss the act with your friends.
 - D. Stop your friendship.
42. The following are reasons why Christians read the Bible. Which one is not? To
- A. strengthen relation hip with God
 - B. get guidance on various issues



- C. strengthen faith in God
D. pass exams.
43. Sharing work and resources promotes all the following **except**
- A. love
 - B. unity
 - C. peace
 - D. hatred.
44. Which of the following parables reminds christians never to give up in life? The parable of
- A. the friend at midnight
 - B. Pharisee and the tax collector
 - C. the three servants
 - D. the lost coin.
45. On the way from School, Ali saw two boys fighting. What should he do?
- A. Stop them.
 - B. Report them
 - C. Reconcile them
 - D. Run away.
46. When the first humans disobeyed God, they
- A. were rewarded
 - B. were chased from the Garden of Eden
 - C. reconciled with God
 - D. died.
47. When Moses was taking care of the flock, he saw a burning bush. When he went near it,
- A. he was burned
 - B. a voice told him to take off his shoes
 - C. his stick changed to a snake
 - D. one of the sheep disappeared.
48. The Bible is divided into the Old and the New Testament. How many books does the Old Testament have?
- A. 66
 - B. 27
 - C. 39
 - D. 47
49. When Jonah was sent to Nineveh by God, he disobeyed. What did he do?
- A. He was swallowed by a big fish.
 - B. He escaped to another place.
 - C. God left him alone.
 - D. He stayed at home and did nothing.
50. Which of the following books of the Bible is a prophetic book?
- A. Isaiah
 - B. Mathew
 - C. Genesis
 - D. 1st kings.



PART 2: ISLAMIC RELIGIOUS EDUCATION 3

36. Which one of the following surahs of the holy Qur'an clearly explains the events of the day of judgement?
- A. Maun
 - B. Nasr
 - C. Zilzala
 - D. Dhuha
37. Grade 5 learners were discussing about the first revelation. Which one of the following surahs did they identify as the first to be revealed?
- A. Fatiha
 - B. Nas
 - C. Falaq
 - D. Alaq
38. When the prophet lost one of his sons, the Quraish mocked him saying that he had been cut off. Which surah did Allah reveal to console him?
- A. Asr
 - B. Kawthar
 - C. Nasr
 - D. Tiyn.
39. How old was the prophet when he lost his mother?
- A. 6 years
 - B. 8 years
 - C. 10 years
 - D. 40 years
40. Which one of the following brings love among the Muslims according to the hadith of the prophet (S.A. W)?
- A. Fasting
 - B. Swalah
 - C. Hajj.
 - D. Greetings
41. Muslims are allowed to take Tayammam when
- A. water is not available
 - B. water is very cold
 - C. one has to buy water
 - D. there is a lot of sand and dust around.
42. Which one of the following statements is **true** about the angels of Allah? They
- A. received books
 - B. preached Islam
 - C. advice Allah
 - D. obeyed the command of Allah,
43. Angels are created from
- A. nar
 - B. clay



- C. nur
D. water...
44. When Hussein was on his way back home, he saw some Muslims who were standing throughout their prayer. Which prayer were they performing?
A. Eid
B. Jum'aa
C. Janaza
D. Dhuhr.
45. The first muadhin was called by
A. Umar
B. Bilal
C. Abubakar
D. Ali.
46. A prophet of Allah was thrown in fire to burn off but Allah (S.W) ordered fire, "***Be cool and safe on my servant'***". This was Prophet
A. Nuh (A.S)
B. Yusuf (A.S)
C. Musa (A.S)
D. Ibrahim (A.S).
47. How many brothers did Prophet Yusuf (A.S) have?
A. 11
B. 10
C. 12
D. 13
48. What are Hadith?
A. Stories of Prophets.
B. Sayings of Swahabas.
C. The history of Islam.
D. Sayings of the Prophet.
49. In the hadith of the prophet, we learn that Allah (S.W) judges people basing on their
A. actions
B. appearance
C. wealth
D. race.
50. What did Allah promise those men who wear women clothes and women who wear the male clothing according to Hadith?
A. Reward
B. Punishment
C. Curse
D. Confusion.